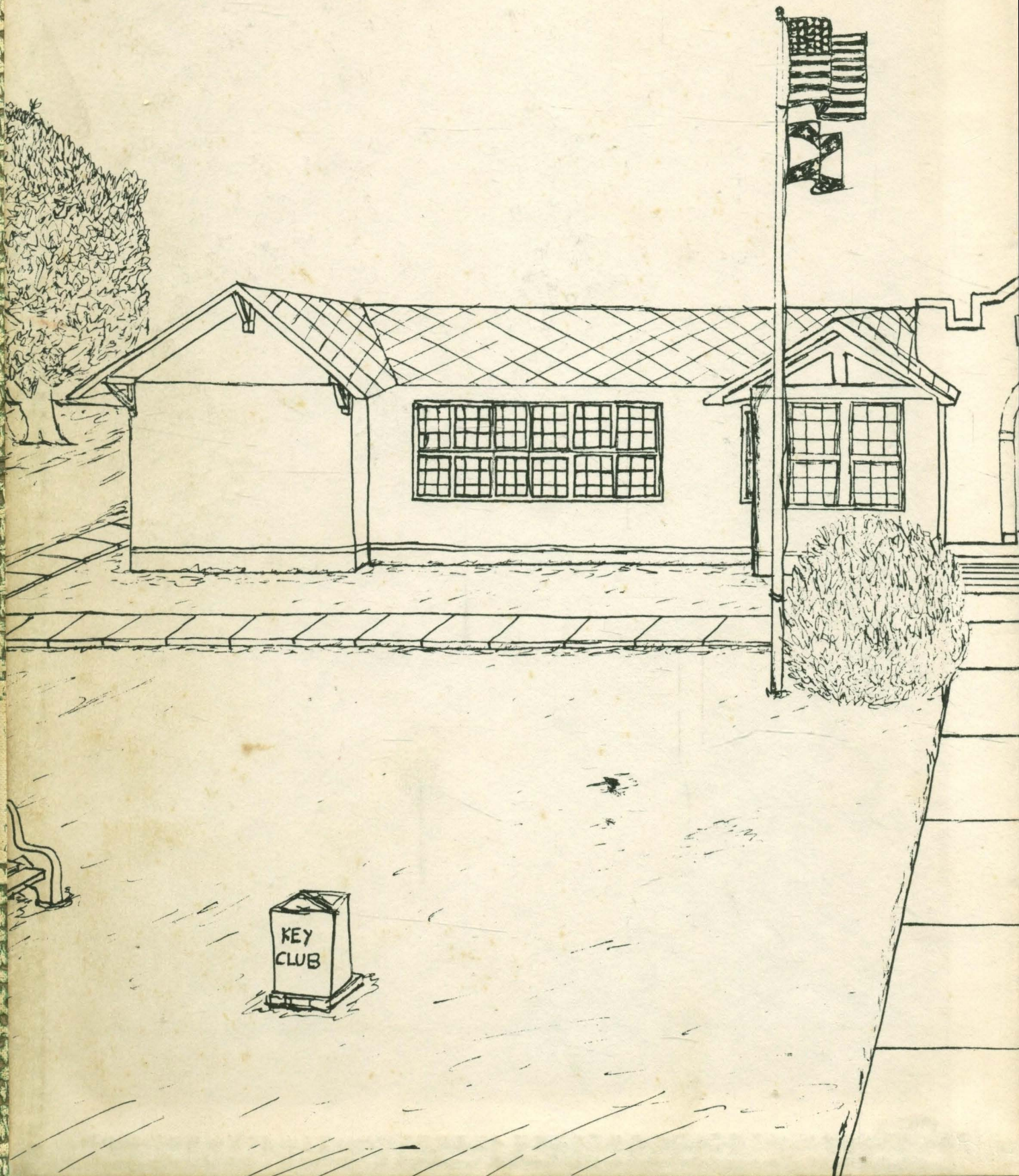


BALCOALA















# **PRESENTING THE 1958 BALCOALA**

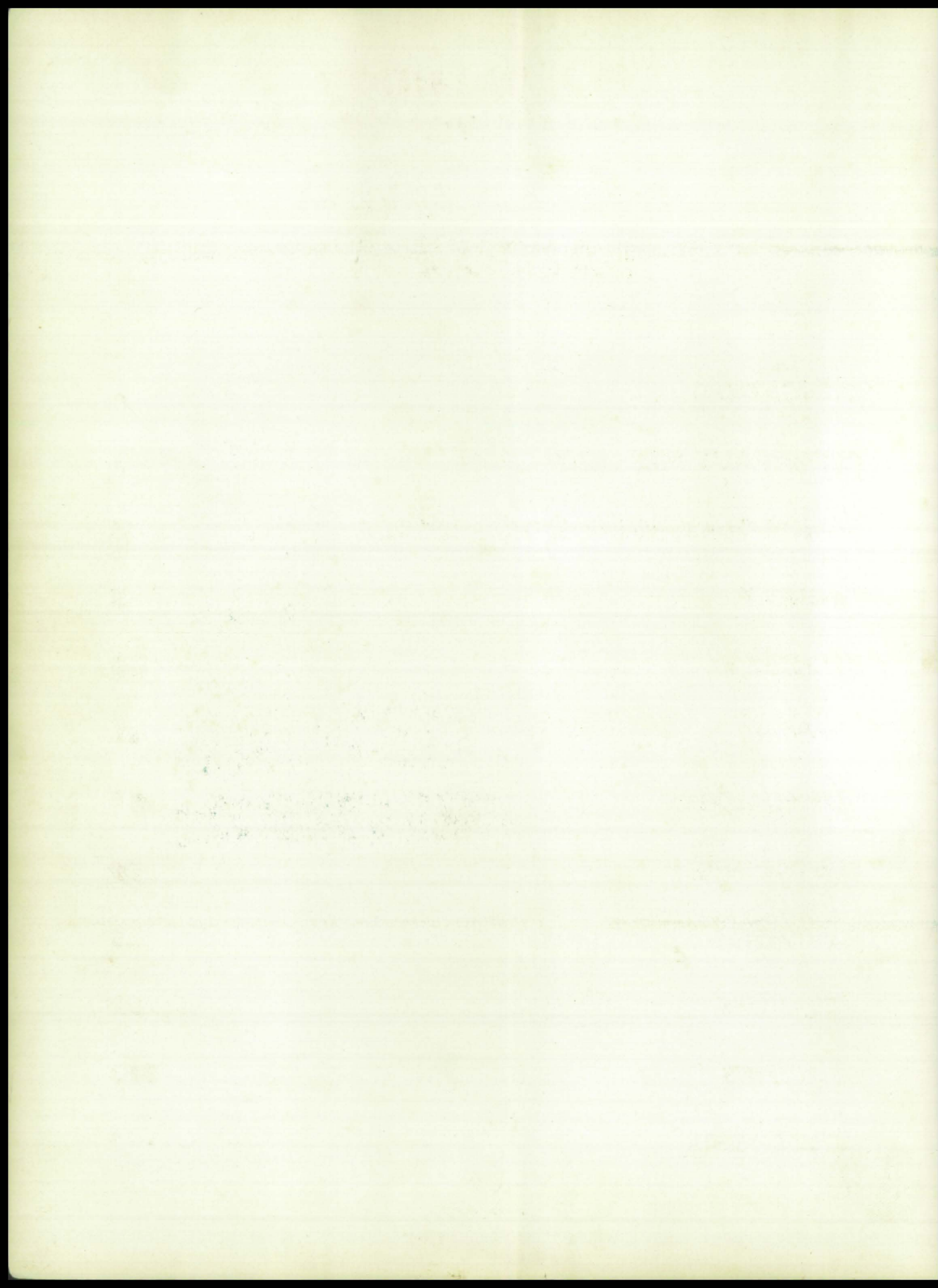


Entrance to the world of knowledge

Published by SENIOR CLASS  
BALDWIN COUNTY HIGH SCHOOL  
Bay Minette, Alabama

WADE FAULKNER  
Editor-in-Chief







**THE 36TH EDITION  
OF THE**

**BALCOALA**

<b>DEDICATION</b>	<b>2</b>
<b>PRINCIPAL'S MESSAGE</b>	<b>3</b>
<b>SENIOR CLASS PRESIDENT'S MESSAGE</b>	<b>4</b>
<b>FACULTY</b>	<b>5</b>
<b>SENIORS</b>	<b>19</b>
<b>JUNIORS</b>	<b>41</b>
<b>SOPHOMORES</b>	<b>51</b>
<b>JUNIOR HIGH</b>	<b>59</b>
<b>FAVORITES</b>	<b>69</b>
<b>ACTIVITIES</b>	<b>87</b>
<b>ATHLETICS</b>	<b>117</b>
<b>ADVERTISERS</b>	<b>113</b>





# DEDICATION

We, of the Balcoala Staff, humbly dedicate the 1958 annual to a person dear to all the students of our school. Although not a member of the faculty, we feel that through his untiring work with the Key Club, he has done much for this school. It is with a sense of gratitude that we dedicate this yearbook to Mr. John Hollinger White, known to us as Judge.



# PRINCIPAL'S MESSAGE



We, of the faculty of this school, have  
seen another good class graduate. We hope  
that the years spent here by you Seniors  
have been profitable and wish each of you  
much success in life.  
Best of luck, Seniors!

C. V. Daniels  
Principal



# SENIOR CLASS PRESIDENT'S MESSAGE



## PRESIDENT'S MESSAGE

The big moment has now arrived, the time the Seniors have all eagerly anticipated. But upon its arrival, most of us find that we are about as sad as we are happy. We have done our best to establish a good record and to leave a challenge to next year's class.

It has become a tradition for each class to be better than the class before it. I hope that next year's Seniors will uphold this tradition, but I will say this: It's not going to be easy.

Paul Lyles





*aculty*

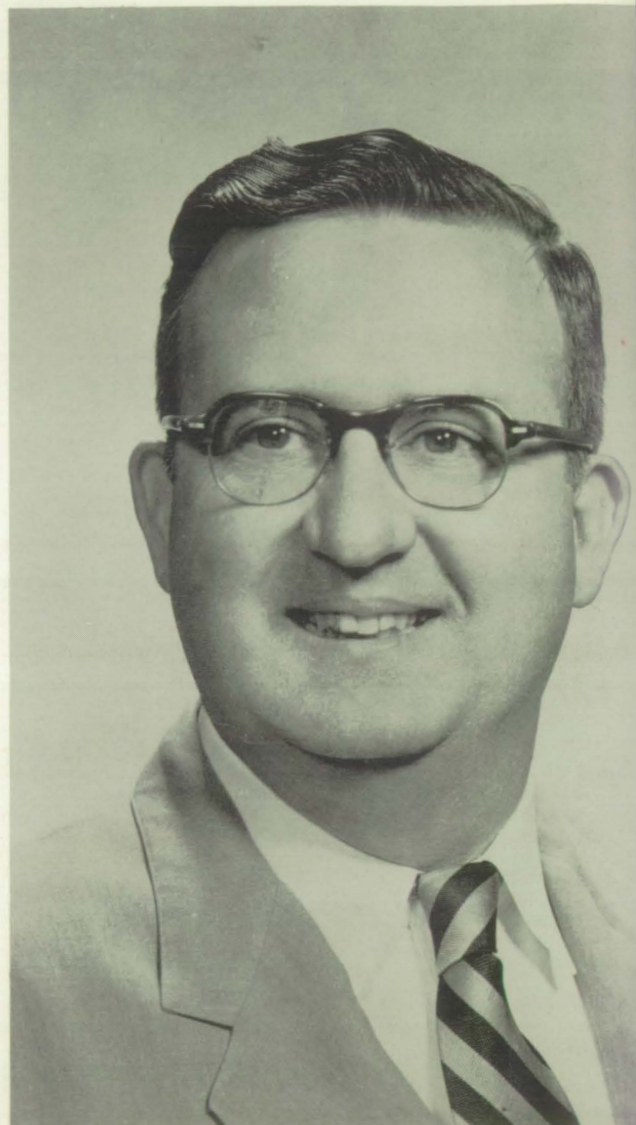






W. R. WILLIAMS

Columbia University, Livingston State  
Teachers College, B. S., George Pea-  
body College, M. A.



C. V. DANIELS

Livingston State Teachers College, B. S.  
University of Alabama, M. A.



J. H. JENNINGS

Mississippi College, B. A., Mississippi  
Southern, M. A.



HENRY FORD ALFORD  
Southeastern Louisiana College,  
B. M. C.

AMELIA BENNETT  
Brenau College, University of  
Alabama

JERRY BENSON  
Livingston State Teachers College,  
B. S.

CLARA BOLON  
Alabama College, B. S.

WILEY BOWERS  
Jacksonville State Teachers College,  
B. S. , University of Alabama, M. A.

THELMA BUSBEE  
Huntingdon College, A. B.

CALVIN COOTS  
University of Alabama, B. S. ,  
Florida State University, M. A.

LORRAINE CRAWFORD  
University of Pittsburg, B. S.

EMILY HAYES  
University of Alabama, M. S. , B. S.

ADOLPHUS JONES  
Alabama Polytechnic Institute, B. S.







LILLIAN LEONARD  
University of Alabama, B. S.  
M. S.



MARTHA LYLES  
Troy State Teachers College,  
B. S.



ELLISON McDUFFIE  
Troy State Teachers College,  
B. A.



LOUISE McDUFFIE  
Troy State Teachers College,  
B. S.



C. V. DANIELS,



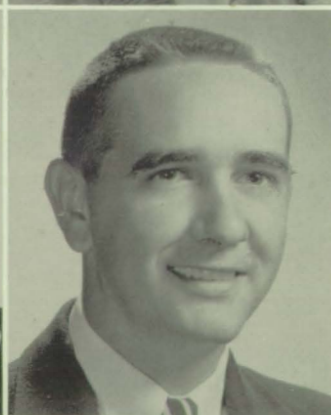
PAUL McKINNEY  
Emory University, A. B.



MARJORIE MATTHEWS  
Daphne Normal School, Uni-  
versity of Chicago



BESSIE MILAM  
Livingston State Teachers Col-  
lege, B. S.



JOE MOORE  
Livingston State Teachers Col-  
lege, B. S.



MARY CLYDE MOORE  
Livingston State Teachers Col-  
lege, B. S.



BYRON NALL  
Alabama Polytechnic Institute,  
M. A.

## TEACHERS





WILFORD NEALEY  
Livingston State Teachers College, B. S.

JULIA NOONAN  
Alabama College, A. B.

HELEN PAGE  
Office Secretary

NANCY PRESLEY  
University of Alabama, B. S.

ELLA MAE SMITH  
Huntingdon College, A. B.

MARY ALLEN STOUGH  
Alabama College, A. B., University of Alabama

DANIEL E. STREBECK  
Mississippi College, B. S.

JEANNIE WEEKLEY  
Alabama Polytechnic Institute, B. S.

RUTH WEST  
Huntingdon College, A. B., University of Texas, M. Ed.

INEZ ZEHNER  
Alabama College



HEAD MAN

LOUNGE







BENNETT - English, World History



BOWERS - American History, World History

# SENIOR HIGH

CAPELL - Home Economics

CRAWFORD - Economics, English







JONES - Diversified Occupations



LEANORD - Mechanical Drawing, Biology, Physics, Chemistry

## SENIOR HIGH

LYLES - Shorthand, Typing



McDUFFIE - English







NALL - Vocational Agriculture



NEALEY - Typing, Bookkeeping

# SENIOR HIGH

NOONAN - Geometry, Algebra



WEST - English, Spanish, French





BOLON - Science



BUSBEE - Civics

# ***JUNIOR HIGH***

HAYES - Science



McKINNEY - English







MATTHEWS - Math



MILAM - Math, World History

# JUNIOR HIGH

MOORE - Social Studies, Physical Education



SNIPES - Math





SMITH - English



STREBECK - Social Studies

# ***JUNIOR HIGH***

WEEKLEY - English



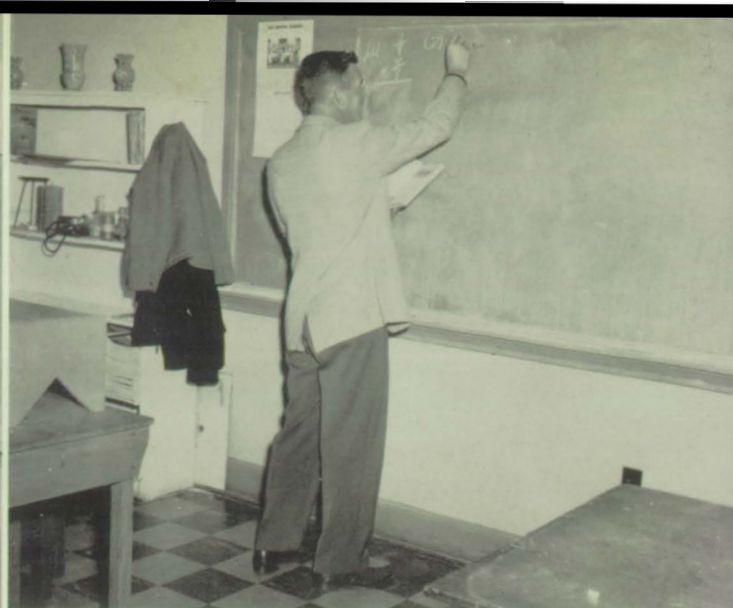
ZEHNER - Science







BENSON - World History, Social Studies, Physical Education



JENNINGS - Math, Physical Education

## SENIOR AND JUNIOR HIGH

McDUFFIE - Social Studies, Physical Education





PAGE - Office Secretary



STOUGH - Librarian

## ***SENIOR AND JUNIOR HIGH***

COOTS - Glee Club









*eniors*





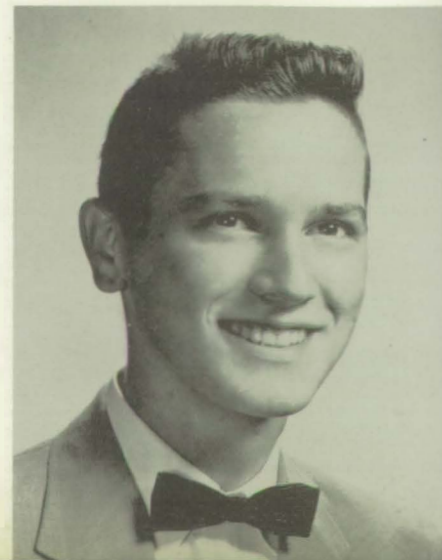
# CLASS OFFICERS

Vice President  
BROWN CROSBY



President  
PAUL LYLES

Secretary  
JESSIE H. SLAUGHTER





PATRICIA BAGGETT  
FHA 56, 57; Glee Club 57, 58.

NEWTON BEASLEY, JR.  
Key Club 56, 57, 58; DO Club 57, 58.

CAROLYN BRAY  
FHA 55, 56, 57, 58; Beta Club 56, 57, 58;  
Camera Club 57, 58.

LLOYD BROWN  
Basketball 55, 56, 57, 58.



JOYCE BRYARS  
FHA 56, 57, 58.

RUTH BRYARS  
FHA 55, 56, 57.

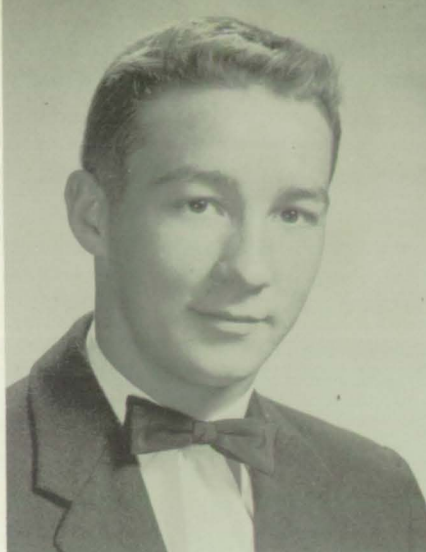


LARRY CATRETT

"B" Club 56, 57, 58, Treasurer 58; FFA 57, 58; Football 54, 55, 56, 57, 58; Baseball 54, 55, 56; Basketball 54, 55, 56.

DAVID CHESNUTT

Beta Club 55, 56, 57, 58; Key Club 55, 56, 57, 58, State Lieutenant Governor 57, President 58; Boys' State 57; Science Club 56, 57; Annual Staff 56, 57, 58, Business Manager 57, 58; Tiger's Roar 56, 57, 58, Assistant Editor 57, Editor 58; Band 52, 53, 54, 55, 56, 57, 58.



NOBIE COOPER

FHA 56, 57, 58; "B" Club 58; Glee Club 55, 56; Library Club 55, 56; Majorette 55, 56, 57; Cheerleader 57, 58; Tiger's Roar 58.

DOROTHY CORLEY

Beta Club 55, 56, 57, 58; FTA 56, 57, 58; Library Club 56, 57, 58, Vice President 58; Girls' State 57; Glee Club 58; Band 52, 53, 54, 55, 56, 57, 58; Tiger's Roar 57, 58, Special Reporter.



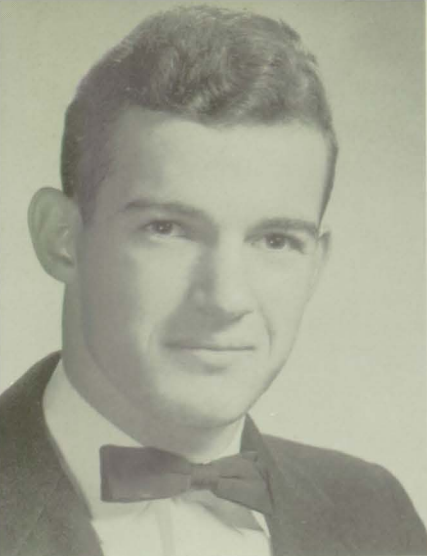
ALICE COX

Library Club 56, 57, 58; Beta Club 56, 57, 58.

JEROME COX

DO Club 56, 57, 58.





**BROWN CROSBY**

"B" Club 57, 58, Vice President 58; Beta Club 56, 57; Key Club 56, 57, 58; Student Council 58; Football 56, 57, 58, Captain 58; Baseball 56, 57, 58; Senior Three Vice President; Senior Two Vice President.

**BARBARA DAVIS**

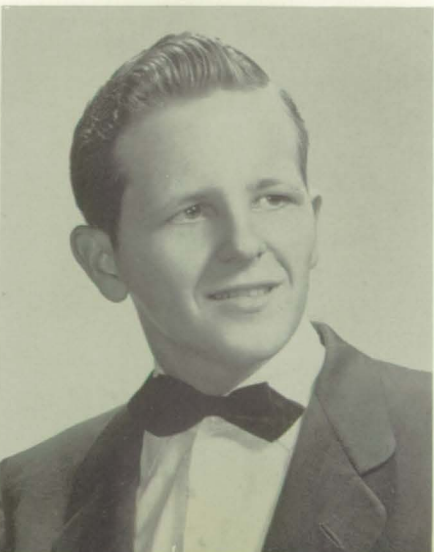
FHA 57, 58.

**FRANCES DAVIS**

FHA 56, 57.

**EMOGENE DAVISON**

FHA 56, 57; Beta Club 56, 57, 58; DO Club 58, Secretary 58; Student Council 56.



**MARIE EDDINS**

Camera Club 56, 57, 58, Vice President 57, 58; Science Club 56, 57, 58, Treasurer 58; Music Club 56, 58; FTA 55, 56, 57, 58, Librarian 58; Student Council 56; Band 52, 53, 54, 55, 56, 57, 58, Dance Band 55, 56; All-State Band 56, 58; Library Club 56; Glee Club 56; Paper Staff 58; May Day Court 57.

**STEPHEN EDDINS**



SHIRLEY ONEEDA EMMANUEL  
FHA 55, 56.

ROY ETHERIDGE  
FFA 56, 57, 58.



JACKIE EUBANKS  
FHA 55, 56, 57, 58, Corresponding Secretary 58; FTA 55, 56, 57, 58; Library Club 52, 53; Glee Club 57, 58; Paper Staff Typist 57, 58; Annual Sales Staff 57, 58.

WADE FAULKNER  
Annual Staff 56, 57, 58, Assistant Editor 57, Editor-in-Chief 58; Key Club 55, 56, 57, 58, President 56, 57, State Secretary-Treasurer 56, 57, 58; Senior II Class President; Paper Staff 56, 57, 58, Assistant Editor 56, 57, 58; Beta Club 55, 56, 57, 58, Treasurer 56, 57; Science Club 55, 56, 57, 58, Vice President 56, 57.

SHELBY FLOWERS  
FHA 56, 57, 58.

JEAN BAILEY FRIEL  
Band 52, 53, 54, 55, 56, 57, Librarian 57; Dance Band 55; Camera Club 55, 56, 57, 58, Treasurer 58; Science Club 55, 56; Music Club 55, 56, 57, 58, Vice President 58; Annual Staff 56, 57, 58, Assistant Literary Editor 57, Literary Editor 58; FTA 54, 55, 56, 57, 58, Photographer 57, Historian 58; Homecoming Queen 58.





DELORES GAINER

FHA 56, 57, 58; Library Club 55, 56, 57, 58.

ELEANOR GIDEONS

FHA 56, 57, 58; Camera Club 58; Student Council 57.

CLAUDE GROSS

FFA 56, 57, 58; Band 54, 55; Football 56.

MYRTISE HALL

FHA 56.



WANDA HARRELL

FHA 56, 57, 58; Glee Club 55, 56, 57, 58; Homecoming Court at Red Level 54.

CAROL ANNE HASTIE

Beta Club 56, 57, 58; Glee Club 58; FTA 57, 58, Reporter 58; FHA 57, 58, Secretary 58; Paper Staff 56, 57; Cheerleader 58; Majorette 55, 56; Annual Sales Staff.



**JOYCE HASTINGS**

Beta Club 56, 57, 58; FHA 56, 57, 58;  
Glee Club 56, 57, 58.

**TOMMY HAWKINS**

"B" Club 58; Key Club 57, 58; Football  
55, 57, 58; Basketball 56, 57, 58.



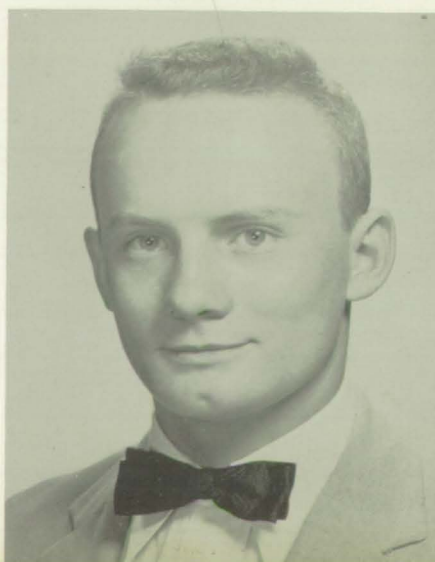
**NELDA HAYLES**

**DAISY NELL HEATON**

Beta Club 56, 57, 58; Science Club 56,  
57, 58, Corresponding Secretary 57;  
Tiger's Roar 57, 58; FNA 56; "B" Club  
57, 58; Cheerleader 57, 58.

**WAYNE HOLLAND**  
DO Club 57, 58.

**CLAUDE JOHNSON**





**JUDITH JONES**

FHA 56, 57, 58; Glee Club 58.

**JUDY LAMBERT**

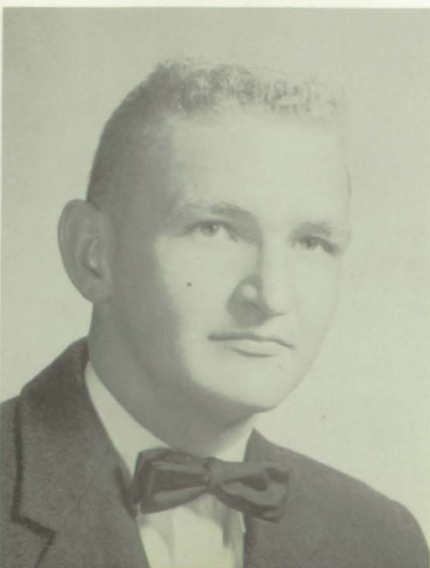
Science Club 56, 57; Beta Club 56, 57; Glee Club 58; Annual Staff 57, Art Editor 57; Majorette 52, 53, 54, 55, 56, Head Majorette 56; Homecoming Court 58.

**ABBIE DEAN LEDKINS**

FHA 56, 57, 58; Glee Club 58.

**DAVID LINDSEY**

Camera Club 58; Glee Club 54, 55; Beta Club 56, 57, 58; Key Club 56, 57, 58; Annual Staff 58; Paper Staff 56, 57, 58; Band 52, 53, 54, 55, 56, 57, 58; Baseball 54, 55; Basketball 54, 55.



**CAROLE LEVERAGE LITTLE**

Glee Club 55, 56, 57, 58; FHA 56, 57, 58.

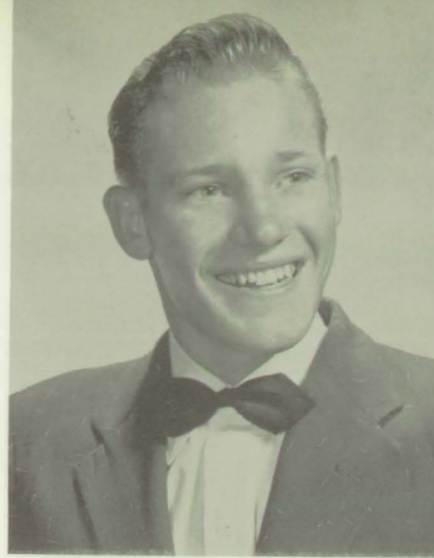
**JACK LONG**

Student Council 55, 56; Key Club 57, 58; Senior I President; DO Club 57, 58, Vice President.



OLSON LONG

SONNY LUTHER



PAUL LYLES

Key Club 56, 57, 58; Beta Club 56, 57;  
Student Council 57; Baseball 56, 57, 58;  
Senior II Vice President; Senior III Presi-  
dent.

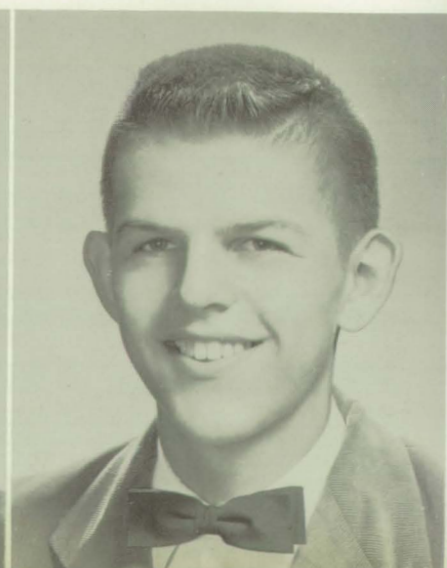
DORTHY NELL McDILL

Beta Club 55, 56, 57, 58; FTA 55, 56, 57,  
58, Treasurer 56, 57, President 57, 58;  
Library Club 53, 54, 55; FHA 55, 56; Glee  
Club 52, 53, 54, 57, 58; Band 53, 54.



SHARRY McDILL  
FHA 57, 58; Band 56, 57.

BILLY MELTON





CHARLES MONEY

WILLIE MOSLEY

FFA 55, 56, 57, 58; DO Club 56, 57, 58,  
Reporter 58.

GLINDA NANCE

FHA 55, 56; "B" Club 57; Camera Club  
56, 57; DO Club 58, Reporter 58; Paper  
Staff 58; Band 52, 53, 54, 55, 56, Major-  
ette 53, 54, 55, 56; Cheerleader 57.

JOANN NEAL

FHA 56.



INA PATTERSON

Beta Club 57, 58; Music Club 58; Glee  
Club 54, 55, 56, 57, 58; Bayettes 56, 57.

DOROTHY PETERSON

DO Club 56, 57, 58, Reporter 57, Vice  
President 58; Student Council 54; Spanish  
Club 55, 56; FTA 55, 56; FHA 55, 56.

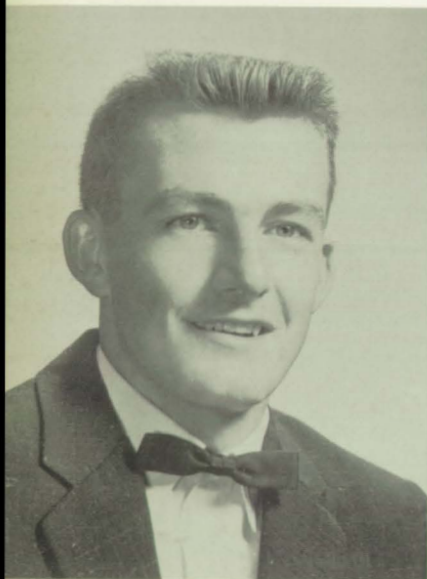


**VELMA PHILLIPPI**

FHA 56, 57, 58; Glee Club 55, 56, 57, 58.

**PEGGY JEAN PHILLIPS**

FHA 56, 57, 58; Spanish Club 56, 57, 58,  
Song Leader 58; Glee Club 58.



**FRED POWELL**

"B" Club 56, 57, 58; FFA 58; Basketball  
55, 56, 57, 58; Football 54, 55, 56, 57, 58;  
Baseball 56.

**PAT PRESLEY**

Beta Club 56, 57, 58; Majorette 53, 54,  
55, 56; Bayettes 54, 55, 56; Corn Derby  
Queen 58; FTA 54; FHA 56, 57, 58; Glee  
Club 53, 54, 55, 58; Library Club 54, 55;  
School Staff 57, 58, Campus Editor 57,  
Exchange Editor 58; Annual Staff 58,  
Publicity Editor.

**PATRICIA ANN PRESLEY**

FHA 56, 57, 58, Recording Secretary 57;  
Glee Club 58; Beta Club 56, 57, 58.

**FAYE PRESTWOOD**

Beta Club 56, 57, 58, Recording Secretary  
57, President 58; Library Club 53, 54, 55,  
56, President 56; FHA 56; Student Coun-  
cil 54; Glee Club 53, 54, 55, 57, 58;  
Spanish Club 56, 57, 58, Treasurer 57,  
Secretary 58; FTA 56, 57, 58, Vice Presi-  
dent 57; Science Club 56, 57, 58, Vice  
President 58.





**LUTHER QUINLEY**  
Science Club 56, 57, 58; Student Council  
57; Baseball 56, 58.

**EULA MAE RAMER**  
FHA 56; 4-H Club 55; Glee Club 58.

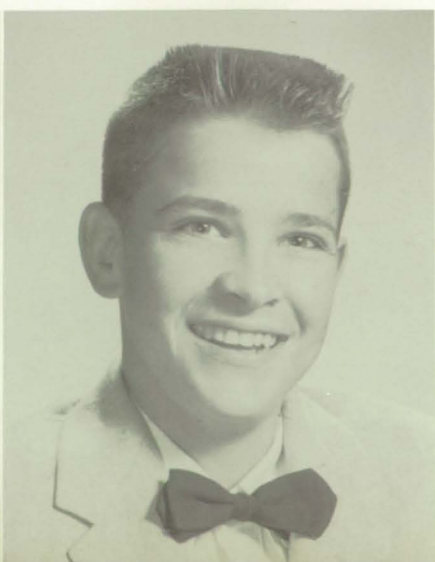
**BETTY REED**  
Homecoming Court 58; Cheerleader 55,  
56, 57; Representative Student Council;  
President of Pep Squad; President of Tri-  
Hi-Y; Vice President of Junior Class 57;  
Business Manager of Paper; Vice Presi-  
dent of Sophomore Class.

**SHARON RICHERSON**  
Cheerleader 57, 58; Head Cheerleader 58;  
"B" Club 57, 58; Band 53, 54, 55, 56;  
Music Club 56, 57, 58; FHA 57, 58,  
Treasurer 58; FTA 56, 57, 58; Camera  
Club 55, 56; Library Club 54, 55; Glee  
Club 53, 54, 58; Dance Band.



**FAYE RICHERSON**  
FTA 57, 58; FHA 56, 57, 58; Beta Club  
56, 57, 58; Glee Club 58; Band 54, 55.

**BOBBY ROBERTSON**  
Band 55, 56; FFA 58.



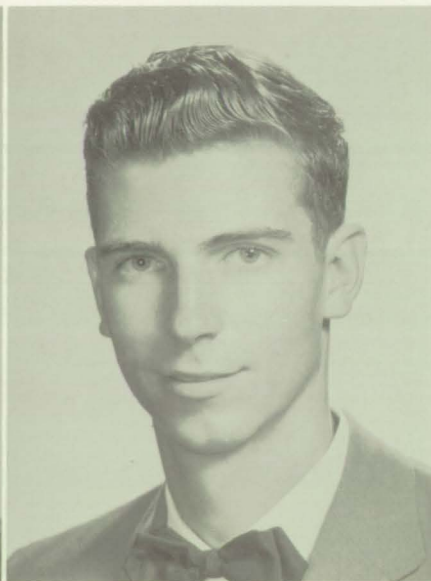
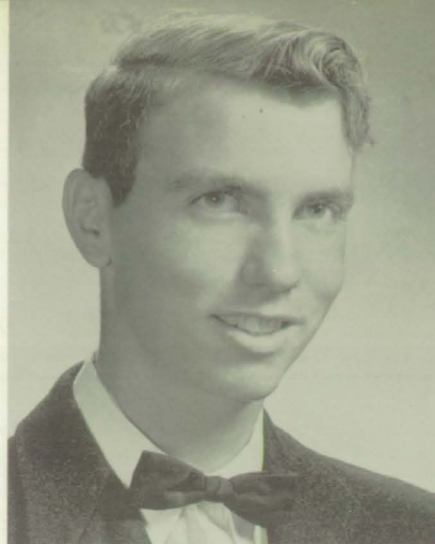


**EDWARD RODGERS**

FFA 55, 56, Secretary 57; Science Club 57, 58; Basketball 55.

**BILL RUPLE**

FFA 57, 58, President 58; Key Club 58; FFA Quartet 58; Conservation Club 58.



**MIRIAM RUSSELL**

Library Club 56, 57, 58, Secretary 56, 57, 58; FHA 55, 56, 57, 58, Publicity Committee 57, 58, Membership Committee 57, 58; Band 50, 51, 52, 53, 54, 55, 56, 57, 58.

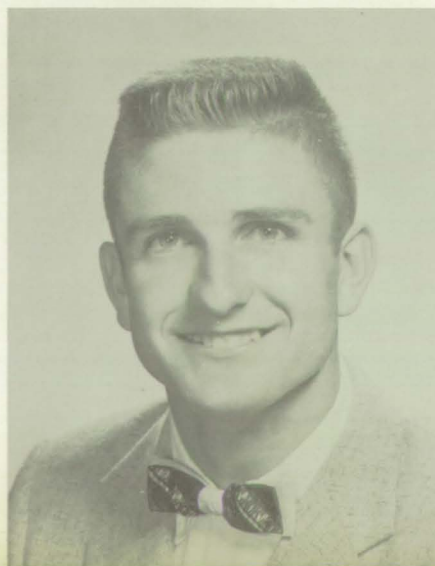
**CHARLES SANKS**

**WENDALL SEAY**

FFA 56, 57; Football Team Manager 56, 57.

**JEANNIE SIBLEY**

Library Club 55, 56, 57, 58, Vice President 56, Reporter 58, Secretary 58; Student Council 53, 57; Beta Club 56, 57, 58; Paper Staff 57, 58; Glee Club 58; Sophomore Class Vice President 56; Homecoming Court 58.





#### JUDEAN SKINNER

Band 52, 53, 54, 55, 56, 57, 58, Librarian 57; All-State Band 54, 55, 56, 57; Beta Club 56, 57, 58, Corresponding Secretary 58, Recording Secretary 58; Science Club 56, 57, 58, Corresponding Secretary 58; Music Club 56, 57, 58, President 58; Paper Staff 57, 58, Sports Editor 57, Campus Editor 58; Annual Staff; FTA 55, 56, 57, 58, Historian 57.

#### PETE SLAUGHTER

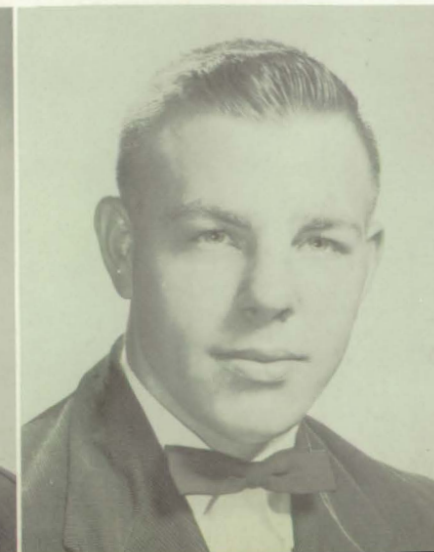
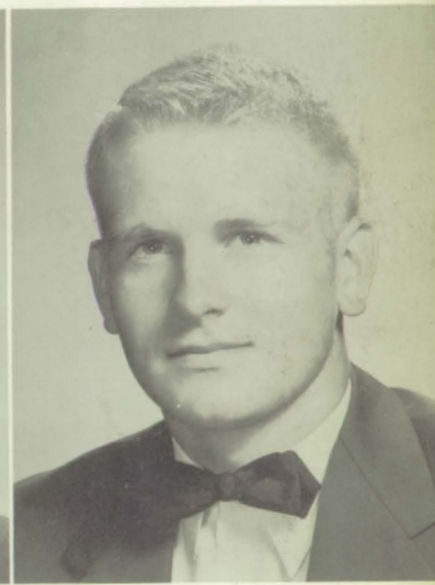
Key Club 56, 57, 58; Beta Club 56, 57, 58, Vice President 58; Spanish Club 56, 57, 58; Senior Class Secretary-Treasurer.

#### HAROLD SMITH

"B" Club 56, 57, 58, Secretary 58; Key Club 56, 57, 58, Treasurer 58; FFA 58; Football 56, 57, 58; Basketball 56, 57, 58; Baseball 56, 57, 58.

#### NEWMAN SMITH

FFA 56, 57; "B" Club 56, 57, 58; Football 56, 57, 58; Basketball 56, 57, 58.



#### ILA SPEARS

Glee Club 58.

#### EUGENE STEWART

FFA 56, 57, Parliamentarian 57.



**EVELYN STEWART**

FHA 56, 57, 58, Vice President 57, President 58; Beta Club 56, 57, 58; Glee Club 58.

**MAXINE STEWART**

FHA 56, 57, 58; Library Club 55; Glee Club 53, 54, 55, 58.



**KENNETH TAYLOR**

Key Club 57, 58; Basketball 56, 57, 58.

**BILLY WALLACE**

FFA 56; DO 57, 58.

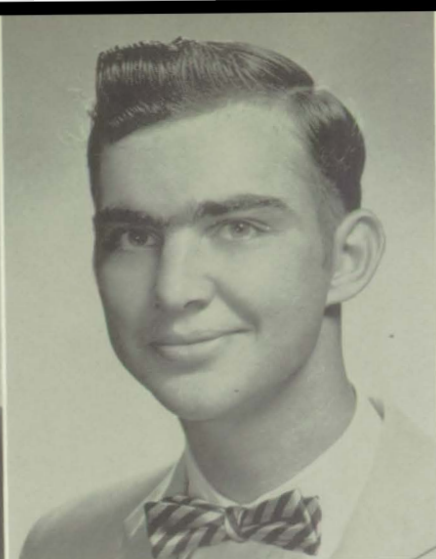
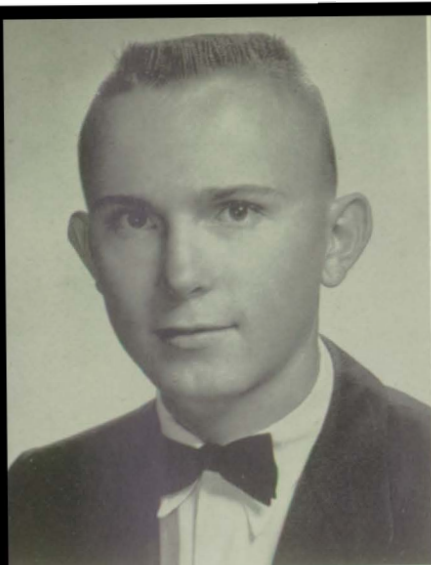
**MARVIN WEEKLEY**

FFA 56, 57, Vice President 57; DO Club 58, Treasurer 58; Basketball 56, 57.

**MYRNA JEAN WHITE**

FHA 56, 57; Library Club 56.





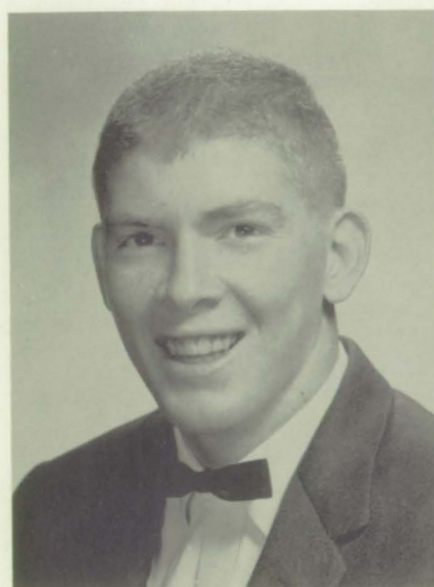
**NOLAN WHITE**  
FFA 57, 58, Vice President.

**THOMAS WHITFIELD**  
Band 55, 56, 57, 58; Key Club 57, 58;  
Spanish Club 56, 57, 58, Vice President 58

**SONNY WILKINS**

Key Club 56, 57, 58, Vice President 58;  
"B" Club 56, 57, 58; Football 55, 56, 57,  
58, Co-Captain 58; Baseball 56, 57, 58;  
Basketball 55, 56, 57, 58; Senior II Vice  
President.

**DANIEL WILLIAMS**  
FFA 56, 57.



**LAVELLE WILLIAMS**

**BARBARA WOOD**  
Beta Club 55, 56, 57, 58; FTA 56, 57, 58;  
Library Club 54, 55, 56, 57, 58, Vice  
President 57, 58; Spanish Club 56, 57,  
58, Reporter 57, Treasurer 58; Glee  
Club 53, 54, 55, 57, 58.



# SENIOR MEMORIES

Many things happened this past year that we Seniors will long remember, such as:

Out Tigers had quite a good record this year in football, losing only three games against seven wins, but two of these losses were especially painful, since they were to our bitterest rivals, Foley and Atmore.

Another big day was the day that our rings arrived. Everyone was pretty mad over the fact that they were so late in coming. We received word several times that they were on the way, but something always happened and they didn't show up. However, they finally came and we settled down soon afterward.

Then came the Big Ball all Seniors look forward to - The Junior-Senior Prom. This year a wonderful time was had by all attending. The Prom was held at the City Auditorium, April 18. Our orchestra, The Belairs, from Mobile, were strictly fabulous. Everyone enjoyed dancing to their music. The theme of the Prom was "A Southern Serenade." The decorations were beautiful, and the entertainment was terrific. The Seniors wish to express their sincere appreciation to the Juniors and also to their Sponsors, Mrs. Bennett, Miss West, Mr. Bowers, and Mrs. Moore. This occasion shall long be remembered.

This year our magazine sale was a real success. Our goal was \$3,500.00, and we went well over it. The five top salesmen were awarded with watches. They were Paul Lyles, Fred Powell, Judy Skinner, Wade Faulkner, and Carrol Anne Hastie. The Seniors of 1957-1958 leave to the Seniors of 1958-1959 the challenge of upholding the high standards of this school's past Senior Class and sincerely hope that you will do so.

## MAGAZINE SALE

Adding up daily receipts



Loser pays off



# CLASS PROPHECY

I find it hard to believe that just twenty short years ago I was a Senior at B.C.H.S. I have received many letters from my classmates. Now, I shall share a few of them with you.

1. The latest word from our President, Paul Lyles, was that the Class Reunion held last week in Bay Minette was quite a success. Many things were discovered, such as. . .
2. Lee Thompson is still buzzing around the square in his 1950 green Dodge.
3. Sonny Luther is about to graduate from Mobile University Center.
4. Red Wilkins, after twenty years, is still housewrecking.
5. Professor David Chesnutt now occupies the first cell to your right at Brice Institute, where he is studying the human mind.
6. Harold Hall is now chief dump truck driver for C.C. Brantley.
7. Glinda Nance is now in her twenty-second year of soda jerking at Barron's Drug Store.
8. David Lindsey is now doing a profitable bait business at Orange Beach.
9. Wade Faulkner, after thirteen years of hard study, is now a very successful animal doctor in Baltimore, Maryland.
10. Jackie Eubanks and Pat Presley are still waiting for R. Minor and Johnny Nix to graduate.
11. Pete Slaughter is now running a Ferry across Tensaw River.
12. Brown Crosby now owns his own Pine Tree.
13. Claude Johnson now owns his own Beef Market.
14. Sharon Richerson is now married to a respected dentist.
15. Marvin Weekley is now the Mayor of Perdido.
16. Carrol Anne Hastie now runs her own Humpty Dumpty School.
17. Harold Smith is now a respected Electronics Engineer at M.I.T.
18. Tommy Hawkins and Fred Powell are now partners in a big business firm.
19. Newman Smith is now President of the Baldwin County Coon Hunters Assn.
20. Marie Eddins is now the Assistant Editor of Confidential Magazine.
21. Judy Skinner is now a successful oil dealer in Temple, Texas.
22. Betty Reed is now Alabama Ladies Tennis Champion.
23. Faye Prestwood has now relieved Miss Leonard of her teaching position at B.C.H.S.

## MAGAZINE PARTY

Who wasn't going swimming?

Who's next?





# LAST WILL AND TESTAMENT

In the name of freedom, amen. We, the Seniors of Baldwin County High School, being about to pass out of this sphere of education, in full possession of a crammed mind, and almost superhuman understanding, do make and publish this, our last will and testament, hereby revoking and making void all former wills or promises at any time heretofore made by us, or mayhap, carelessly spoken, one to the other, as the thoughtless wish of an idle hour.

FIRST: To next year's Members of the Key Club, we leave the ability to throw ice cubes.

SECOND: To the President of next year's Key Club, David Chesnutt leaves the ability to shoot firecrackers in Geometry.

THIRD: To next year's Seniors, we leave our Senior Trip.

FOURTH: Red Wilkins leaves to John McMillan the ability to perform the duties of bathroom monitor and to uphold the high morals of this office.

FIFTH: We leave to Mr. Daniels a cue stick to shoot his Eight Ball.

SIXTH: The senior members of the Band leave to next year's members of the band???

SEVENTH: We leave to next year's Seniors the ability to sell magazines and to go over their quota.

EIGHTH: We, the Seniors of the Physics Class, leave to next year's class the ability to lock their fellow students in the darkroom and to put the blame on the Chemistry Class.

NINTH: We, the Seniors in the Chemistry Class, leave the ability to tear up Physics displays without being caught.

TENTH: We leave to next year's Seniors the ability to skip school and get caught.

ELEVENTH: The Seniors of the football team leave to next year's Seniors everything we couldn't carry off.

TWELFTH: We, the Senior basketball players, leave the ability to have a good time at Mardi Gras.

THIRTEENTH: We, the Seniors of the Beta Club, leave to next year's Seniors of National Honor Society the ability to make failing grades.

FOURTEENTH: We, the Seniors of the Paper Staff, leave to next year's staff the ability to get the paper out on time.

FIFTEENTH: We, the Seniors of the F.F.A., leave the ability to rake the lawn, mulch the shrubs, plant grass, and perform other janitorial duties.

SIXTEENTH: We, the Senior girls of the Lunch Room leave the ability to sell Buddybars.

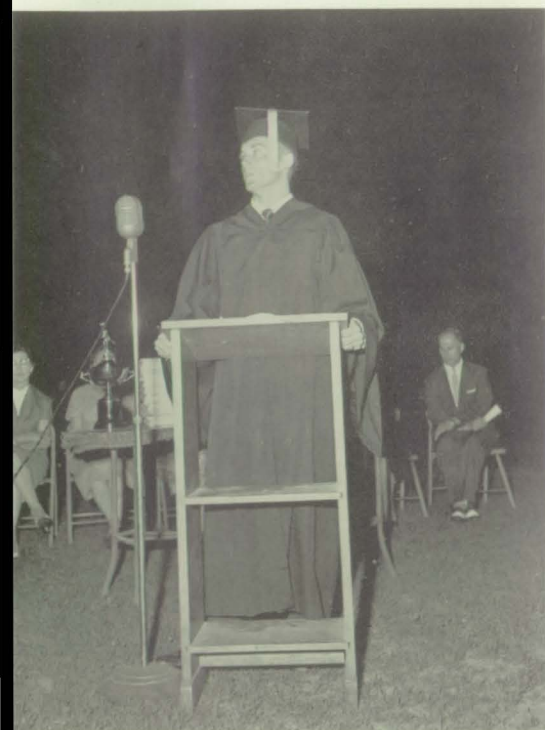
SEVENTEENTH: We, the Seniors of the Annual Staff, leave all our unsold Annuals.

EIGHTEENTH: We, the Senior Teachers' Lounge Sitters, leave the privilege of sitting in the Teachers' Lounge.

NINETEENTH: We, the Seniors of the "B" Club, leave our barbering and cosmetics abilities.

TWENTIETH: We, the Seniors of the baseball team, leave the bats we didn't break.

TWENTY FIRST: We, the Seniors, leave the next year's Seniors the luxurious ball-room at the A. & W.



G  
R  
A  
D  
U  
A  
T  
I  
O  
N







**JUNIOR  
-  
SENIOR**



**P  
R  
O  
M**





*uníors*





# OFFICERS



JUNIOR CLASS OFFICERS

LEFT TO RIGHT: President, Elnor Holmes; Vice-President, Harry Caprara; Secretary-Treasurer, Mavis Giddens.

ELNOR HOLMES

MAVIS GIDDENS





JEAN BAGGETT  
ANN BLACKBURN



JACKIE BRANNAN  
JULIA BRISTOW

BUDDY CLEMMONS  
JACK COWSER



CECIL COX  
SHERRY CRANE





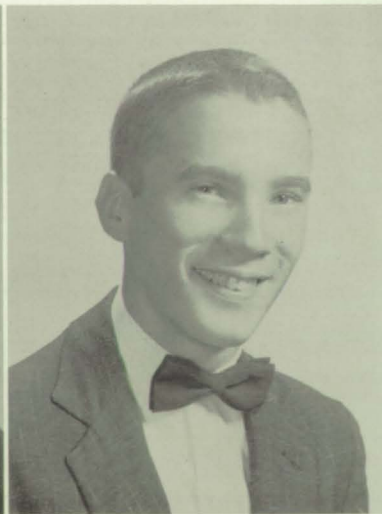
NEWTON DAVIDSON

PEGGY DAY



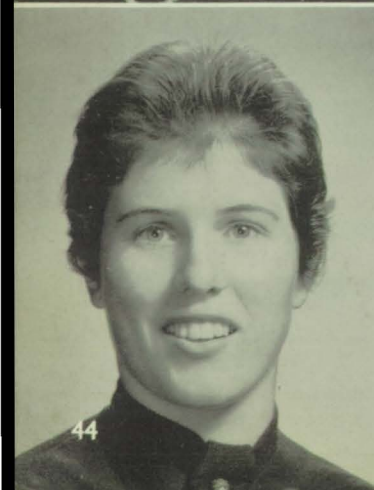
FRANCIS FEMINEAR

BETTY FERGUSON



MARGARET FEULNER

HARRY FILLINGIM



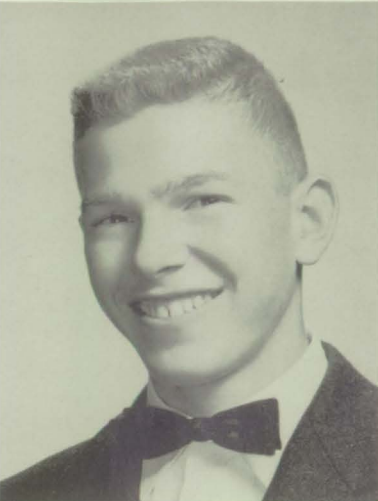
GAIL FLOWERS

JOHN GRIMES



LOWELL HOFFMAN

SARAROSE HUGGINS



BILL JOHNSON

DORLICE KING

SHERON LANGHAM

JACK LINDSLEY



JO ANNE LONG

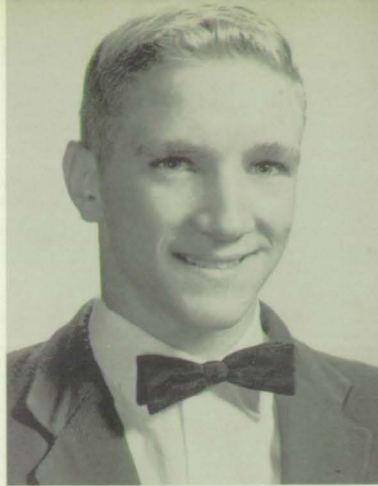
SHIRLEY JEAN LONG





ALBERT McMILLAN

JOHN McMILLAN



JEAN McPHAUL

VERN MAHALOVICH



WENDALL MOSLEY

ALLEN NIX



PAT PAGE

TRELLES PARKER



ROBERT RABON

PAT RIDER

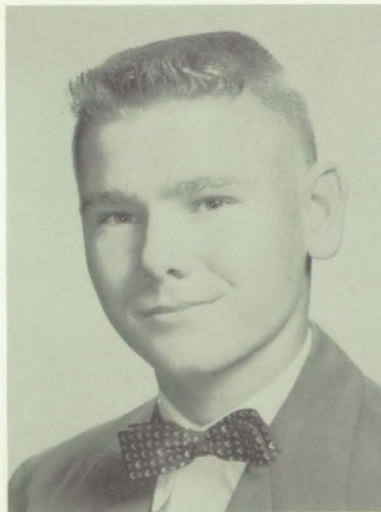


BETTY NELL ROBERTSON

JOE TRAWICK

RONALD TOLBERT

CAROLYN SEAY



CHARLES SHAEFFER

ELIZABETH SMITH





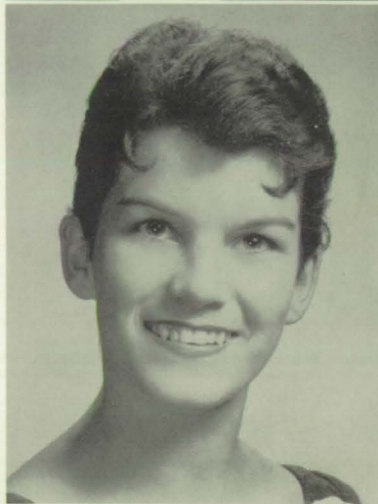
BUDDY STEELE

ANNE STEWART



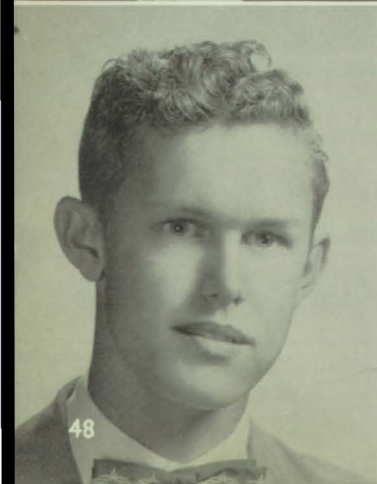
BARBARA STEWART

COY WALKER



WEBB WEEKLEY

ELOISE WHIDBEE



ROY WHITTINGTON

MARIANE WURST

# JUNIOR MEMORIES

The Junior Class of Baldwin County High School of 1958 began the year with the election of our Officers, who were Elnor Holmes, President; Harry Caprara, Vice President; and Mavis Giddens, Secretary-Treasurer.

The Juniors had several outstanding football players, four of whom lettered. They were Wendell Mosley, Allen Nix, John McMillan, and Buddy Clemmons. Helping to cheer these boys were Ann Blackburn, Sharon Langham, and Sherry "Shine" Crane, Cheerleaders.

Cecil Cox, high rating Junior, won an award at the Science Fair in Mobile.

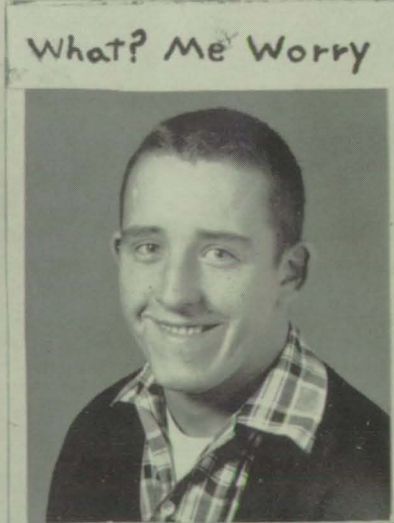
Our Key Club had their best year up to date. At the Convention in Bessemer, Ann Blackburn was chosen Alabama District Sweetheart and Albert McMillan was elected Lt. Governor of this district.

Sidney Weatherford was elected the District D. O. Vice President. There were several members of the Junior Class in the Beta Club. Many of our Juniors walked away with Who's Who Honors. Jackie Brannan and Mavis Giddens were chosen to attend Girls' State and John McMillan was chosen to attend Boys' State.

One main event, and a very inspiring one, was choosing our Classrings. This gave us definite proof that we would be Seniors next year.

Our closing event was our Class Party at Gulf Shores. This ended our year as Juniors with a "BANG."









*sophomores*





# OFFICERS



SOPHOMORE CLASS OFFICERS

LEFT TO RIGHT: Mickey Smith, Treasurer; Delores Bryars, Secretary; Tommy Strickland, President; Ercel Friel, Vice-President.

Tommy  
Strickland

Ercel  
Friel

Delores  
Bryars

Mickey  
Smith





Louise  
Adams



Carolyn  
Brantly



Elaine  
Bray



Edna  
Byrd

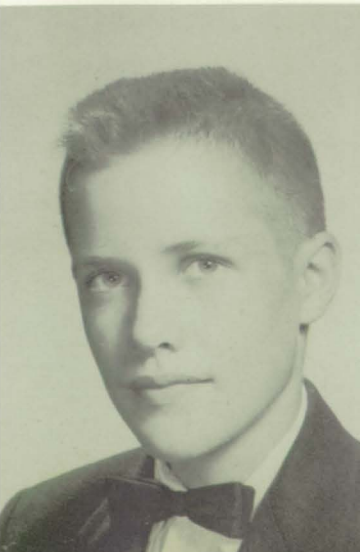
Patricia  
Cabiness



Mariane  
Chambless



Kenneth  
Cooper



Danleigh  
Corbett



Carolyn  
Culver



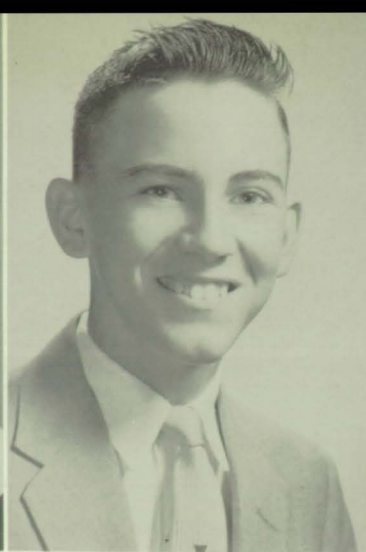
Annette  
Daniels







Sarah  
Daniels



Charles  
Demko



Glenda  
Durant



Annette  
Flowers

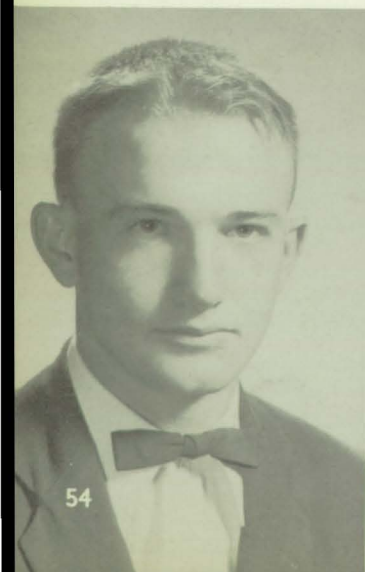


Pearl  
Flowers



Mack  
Giddeons

Donald  
Jaye



Rachel  
Johnson



Glenda  
McCartha



Maxine  
McDill

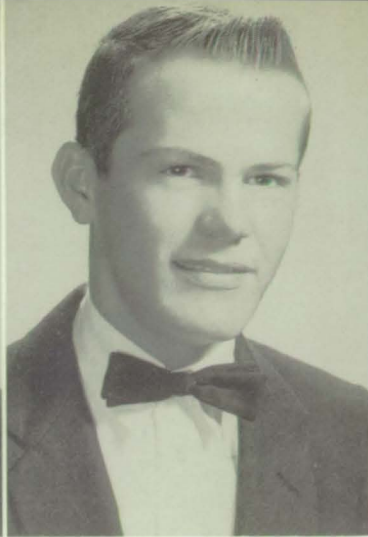




Patricia  
McGill



Linda  
McMillian



Tharon  
McNeil



Penelope  
Miller

Glenda  
Mixon



Cecelia  
Norseworthy



Loraine  
Owen



Randy  
Presley



Roselyn  
Roberts



June  
Slaughter







Charles  
Strong



Patsy  
Taylor



Charles  
Thigpen



Kay  
Thomley

Fay  
Thompson



Ralph  
Turk



Jane  
Turner



Tonya  
Vines



Delores  
White



Phillip  
Williams





Sitting this one out



Some people like to dance

## SOPHOMORE HOP

One of the most impressive events of the Sophomore year was the annual Sophomore Hop. "Twas the Night Before Christmas" was the theme of the hop which was held on December 14 at the City Hall. Decorations included a beautiful decorated Christmas tree which was placed in the corner of the room. The tables were adorned with centerpieces of red candles and silver pine cones. The Sophomores and their dates entered with the Grand March which was led by the Class President, Tommy Strickland. The entertaining program was conducted by the Master of Ceremonies, Jack Long. Everyone had a blast!

Part of the entertainment



Slow down!





# SOPHOMORE MEMORIES

Students coming from Stockton and Perdido for their first year at Baldwin County High School made up a large part of our class.

Many members of our football team were Sophomores. Cheering for these boys was Jane Turner, our cheerleader. Dolores Bryars was chosen for next year and Tonya Vines was chosen as an alternate.

For the first time we were eligible to join the school clubs. We enjoyed working with them and held many offices.

Ercel Friel and Penelope Miller represented B.C.H.S. at the All-State Band Festival. Ercel received two silver medals for her outstanding work. Many other Sophomores were in the band.

Our boys enjoyed playing football, baseball, and basketball and did very well in all.

Members of the Science Club entered exhibits in the Regional Science Fair.

Sophomores took many Who's Who Honors.

This was the year that many of us finally got our drivers license.

Some of the Sophomores were tapped for the National Honor Society. Hope we can stay in.

Glee Club was a lot of fun for many of our girls.

Loyd Hastings won the tractor driving contest in F.F.A.

Everyone enjoyed the class party held at the end of the year at Little River State Park.

Ercel Friel was Drum Majorette for the B.C.H.S. Tiger Band.



*unior hí.*





# FRESHMEN



FRESHMAN HOMEROOM PRESIDENTS

LEFT TO RIGHT: Leon Taylor, Charlotte Kelso, Patsy Mosley, Butch Beasley.

LEFT TO RIGHT: B. S. Alford, L. Allen, N. Allen, S. Allen, S. Arrington, C. Baggett, G. Barnett, L. Barr, D. Baxendale, C. Bell. SECOND ROW: H. Boeschen, C. H. Brame, D. Broughton, W. Brown, C. Bryars, C. Byrd, J. Byrd, M. Byrd, J. Byrne, C. Cabaniss. THIRD ROW: N. Casperson, S. Catrett, E. Cemino, L. Chambliss, M. Chastang, B. Conway, R. Cook, R. Cunningham, J. Davison, R. Davidson.





LEFT TO RIGHT: J. Day, J. Dees, C. Dempsy, H. Duck, T. Duck, N. Earls, C. R. Eubanks, G. F. Ferrell, B. Fleming, F. Fowler. SECOND ROW: B. Franklin, C. Franklin, S. Gibbs, H. Gibson, J. Gibson, R. Gideons, L. Gilbert, D. Gilliland, L. Godby, D. Goins. THIRD ROW: W. Goins, R. Good, D. Green, S. Hadley, B. Hall, E. Hall, R. Hardy, B. Hart, E. Harville, L. Harville. FOURTH ROW: N. Hastings, K. Hayles, J. Hinote, D. Hogan, N. Homan, Jr., J. Irwin, A. Jacobson, A. Johnson, C. Johnson, D. Johnson. FIFTH ROW: J. Joiner, C. Kelso, R. Killcrease, A. King, J. King, N. Lanham, E. Lee, W. Lindsay, G. Little, J. Long. SIXTH ROW: J. Long, L. McDuffie, F. McLain, E. McPhaul, C. Moore, M. Moore, W. Moorer, W. Morrison, B. J. Mosley, P. Mosley.







LEFT TO RIGHT: A. L. Murphy, N. Murphy, J. W. Nabors, E. Overstreet, D. Owen, A. Perkins, D. Perkins, J. Philpot, M. Porter, C. Powell. SECOND ROW: J. Powell, V. Presley, D. Pruette, V. R. Pugh, J. Quinley, J. W. Quinley, T. Quinley, B. Reed, S. Reid, B. J. Rider. THIRD ROW: C. R. Rider, J. Ryba, N. Schram, S. Schultz, C. Sherrer, J. Sibley, M. Skipper, E. Sloan, F. Smith, J. Smith. FOURTH ROW: D. Sprinkle, S. Stamps, J. Stewart, G. Stuckey, J. Stuckey, E. Talbot, L. Taylor, L. Taylor, M. A. Travis, A. Trawick. FIFTH ROW: G. Trawick, B. Turner, D. Turner, K. Turner, E. Vandyke, L. Vinson, C. Waldrop, B. Weaver, C. Weekley, J. White. SIXTH ROW: L. White, R. White, J. Wiggins, C. Williams, K. Williams, R. Williams, P. Wilson, P. Wood, H. Wurst, A. Yarbrough.







Entertainment



Just Resting



One, two, one, two

## FRESHMAN FROLIC



Plenty to go around

THE FRESHMAN FROLIC was held at the grammar school auditorium on Friday, Feb. 14. The party carried out the valentine motif and the auditorium was beautifully decorated with valentines, cupids, and hearts. More than 150 participated in the party. Maids were: Sharon Stamps, Charlotte Kelso, and Barbara Sue Alford. As they passed through the heart, they descended to the main floor and awaited the Queen, Elizabeth McPaul. The dancing was followed by floor shows by the upper-classmen and by games which made it possible for all to participate. Lovely refreshments were served by the room mothers.



"Freshman Sweetheart"

Decorating



More entertainment



Just skipping classes





# EIGHTH GRADE

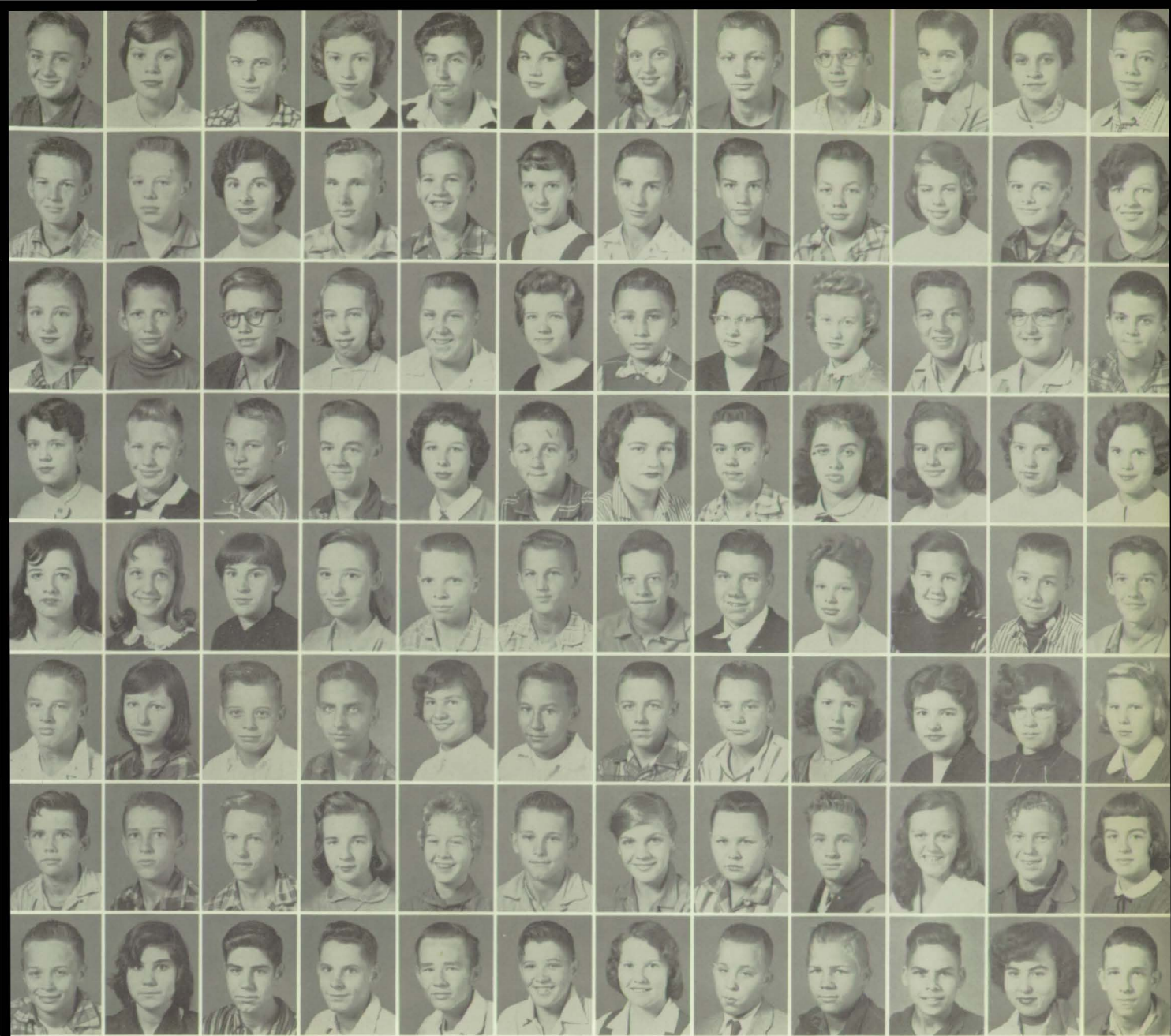


EIGHTH GRADE HOMEROOM PRESIDENTS

LEFT TO RIGHT: Annette McKissock, Ruth Roley, Carolyn Bryars, Butch Wal-drop.

LEFT TO RIGHT: D. Allen, L. Baggett, D. Bell, J. Bell, S. Bell, H. Biggs, M. Blair, R. Boyington, N. Brannan, T. Brannan, J. R. Branum. SECOND ROW: L. Bray, C. Brown, E. Brown, Elvin Brown, C. Bryant, C. Bryars, D. Bryars, B. Caldwell, J. Callaway, C. Chandler, N. Chastang. THIRD ROW: J. Clemmons, M. E. Cooper, B. Crenshaw, P. Crenshaw, L. Crosby, D. Davis, H. Day, P. Day, J. Dean, H. D'Olive, J. E. Eubanks.

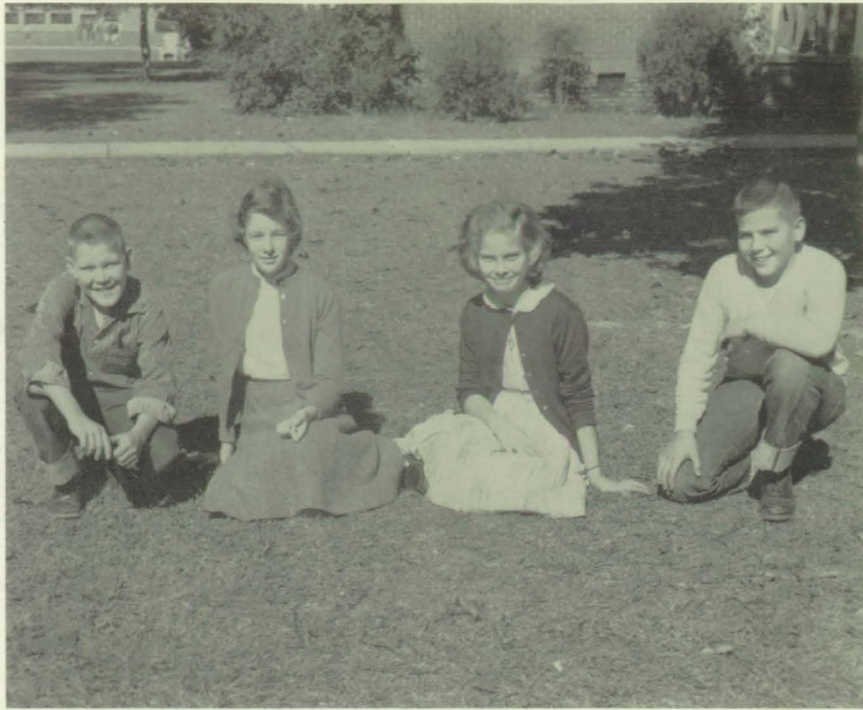




LEFT TO RIGHT: J. Eubanks, B. Ganey, J. Gamer, F. Gibson, B. Gilliam, P. Godwin, B. Goodman, F. Graham, C. Green, J. Hadley, D. Hall, K. Hall. SECOND ROW: D. Harper, E. Hartner, S. Hawkins, D. Hicks, W. Hill, B. Hinote, J. Hinote, P. Hinote, W. Hinote, D. Hodges, H. Holmes, D. Howell. THIRD ROW: K. Ikner, L. Jacobson, D. Jerkins, C. Johnson, C. Johnson, V. Johnson, B. Kilpatrick, L. Knight, V. Lane, D. Langham, J. Langham, W. Langston. FOURTH ROW: R. Lindsey, J. Long, P. Long, R. Lucas, L. Lundberg, G. McCaw, W. McClain, S. McGill, A. McKis-sack, L. Matthews, B. Meadows, D. Mixon. FIFTH ROW: D. Moorer, N. Mosley, V. Neal, H. Nellums, J. Peavy, C. Perkins, E. Phillippi, B. Phillips, J. Phillips, M. Phillips, W. Phillips, B. Quinley. SIXTH ROW: B. Raines, C. Roberts, W. Roberts, J. Rodgers, R. Roley, F. Rollin, S. Ruple, M. Ryan, L. Shiver, D. Simmons, E. Sims, L. Spencer. SEV-ENTH ROW: B. Stewart, G. Stewart, K. Stewart, P. Stewart, A. Still, C. Stokes, J. Taylor, W. Thompson, W. Thomp-son, L. Trawick, J. Turner, T. Tucker. EIGHTH ROW: B. Waldrop, P. Wall, J. Wall, R. Wasdin, C. White, K. Williams, S. Williams, W. Williams, F. Wright, R. Wright, W. Wright, J. Wurst.



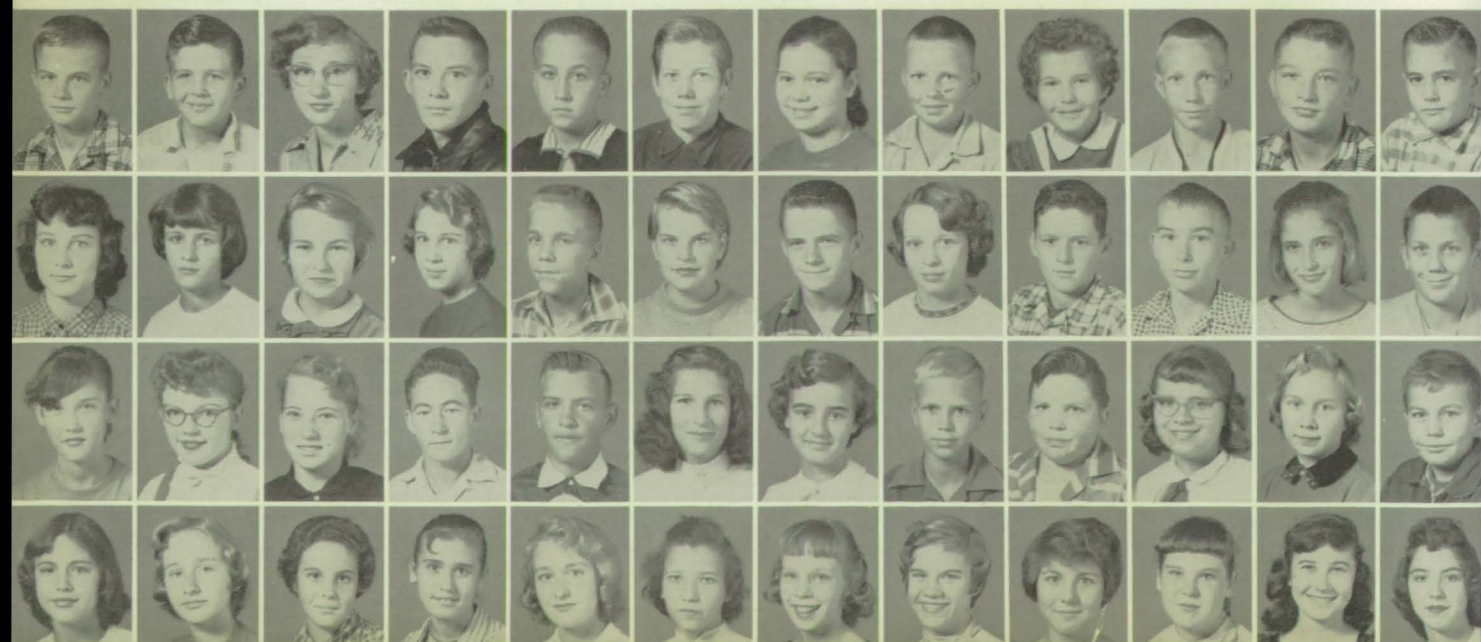
# SEVENTH GRADE



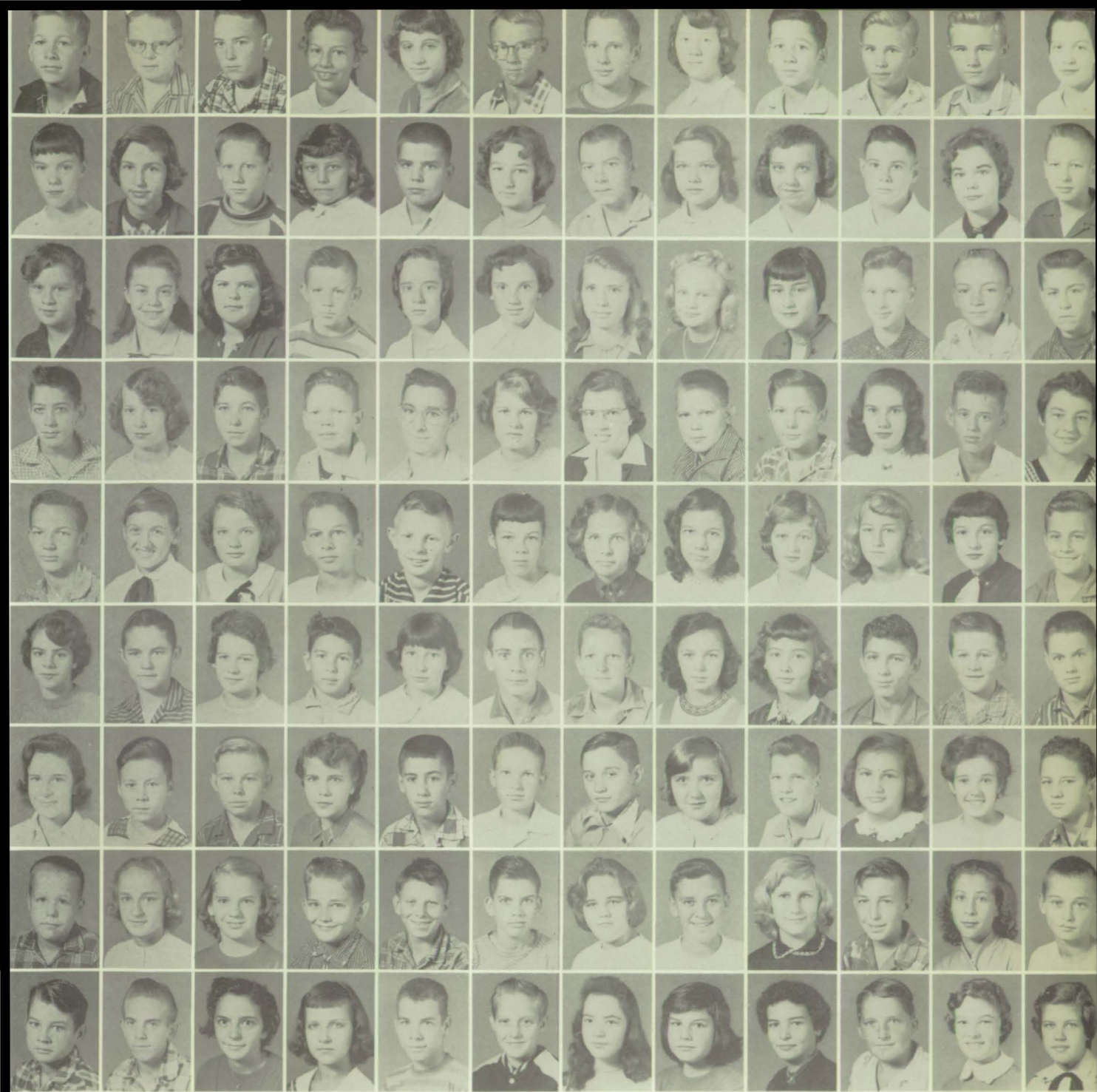
SEVENTH GRADE HOMEROOM PRESIDENTS

LEFT TO RIGHT: John Harris, Jane Alice Woodson, Bobbie Pruette, Kim Johnson.

LEFT TO RIGHT: H. Adams, A. Averett, M. N. Bartley, W. Boyington, J. Broughton, F. Brown, W. Brown, K. Bryars, V. Bryars, W. Bryars, J. Bundy, W. Burt. SECOND ROW: M. Buxton, E. Byrd, G. Byrd, M. Camps, J. Caprari, D. Carlisle, G. B. Carpenter, J. Chastang, T. Chastang, T. Chrenshaw, M. J. Clemmons, R. Conway. THIRD ROW: B. Cook, L. Crawford, C. Daniels, G. Davis, J. W. Davis, L. Donald, J. D'Olive, A. Duck, D. Durant, L. Dyess, L. Easley, R. Emmons. FOURTH ROW: C. Falcon, K. Ferrell, S. J. Flowers, F. Fowler, J. Fowler, H. L. Glass, G. Godbey, B. M. Godwin, E. Goins, D. Greer, M. L. Hadley, M. L. Hadley.







LEFT TO RIGHT: W. Hadley, E. Hall, F. Hall, S. Hall, D. E. Hand, E. Harris, Hasten, J. Heaton, L. Heaton, B. Hicks, B. Hicks, L. Jackson. SECOND ROW: S. N. Jacobson, L. Jerkins, A. Johnson, G. Johnson, K. Johnson, I. Johnson, R. Johnson, B. R. Joiner, M. L. Jones, B. Jordan, E. Kelley, M. Kelley. THIRD ROW: F. Kerby, J. Kinnaird, B. Knowles, L. Lambeth, N. Lamberth, E. Lee, C. Long, S. Long, B. McAteer, H. McDonald, J. McPhaul, W. Martin. FOURTH ROW: R. Mayo, C. Meadows, A. Milstid, D. Mixon, J. Mosley, V. Mosley, T. Nelson, J. Norris, L. Overstreet, B. J. Parker, J. Parker, E. E. Paul. FIFTH ROW: V. Paul, R. Peaden, S. Peavy, L. Phillips, M. Philphot, M. E. Presley, B. Pruitte, M. Pugh, I. Quinley, J. Quinley, S. Quinley, L. Reid. SIXTH ROW: S. Reid, C. Richerson, D. Rider, G. Rider, L. Roberts, L. Robinson, L. Rook, L. Ruple, D. Ruskmon, B. Satler, F. Sloan, J. Smider. SEVENTH ROW: S. Snowden, K. Solsman, E. Stacey, M. Standard, P. Schultz, D. Steedley, C. Stewart, R. Stewart, T. Strong, M. Stuart, B. Simpson, G. Sims. EIGHTH ROW: J. Travis, S. Talbat, F. Taylor, R. Tenison, C. Thompson, D. Tillman, C. Trather, D. Trawick, L. Trawick, G. Vinson, G. Weaver, R. Weaver. NINTH ROW: A. White, B. White, C. White, D. White. P. White, R. White, J. Williams, M. Williams, M. L. Wilson, W. Wood, J. Woodson, W. Wright.







*avorites*







**MR. AND MISS B.C.H.S.**

PAUL LYLES and CAROLE LITTLE



**CORN DERBY QUEEN**

PAT PRESLEY





**MAY QUEEN AND AG QUEEN**

SHARON RICHEPERSON

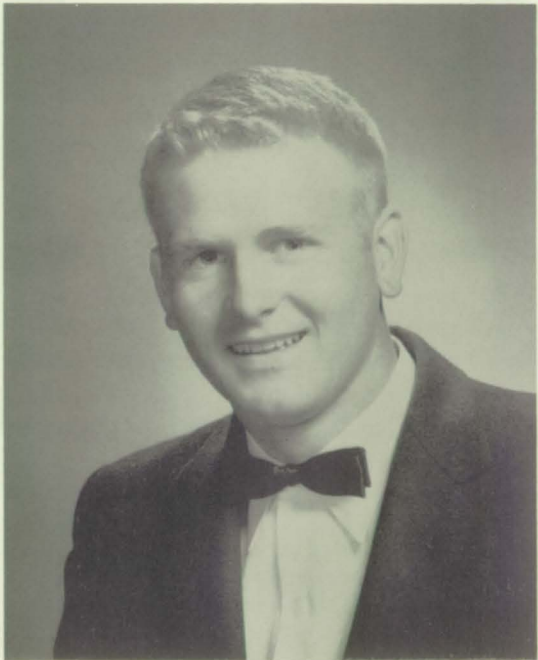


CARROL ANNE HASTIE



PAT PRESLEY

**AND**



Escort  
NEWMAN SMITH

**COURT**

DAISY NELL HEATON

JULIA BRISTOW







**MR. AND MISS D.O.**

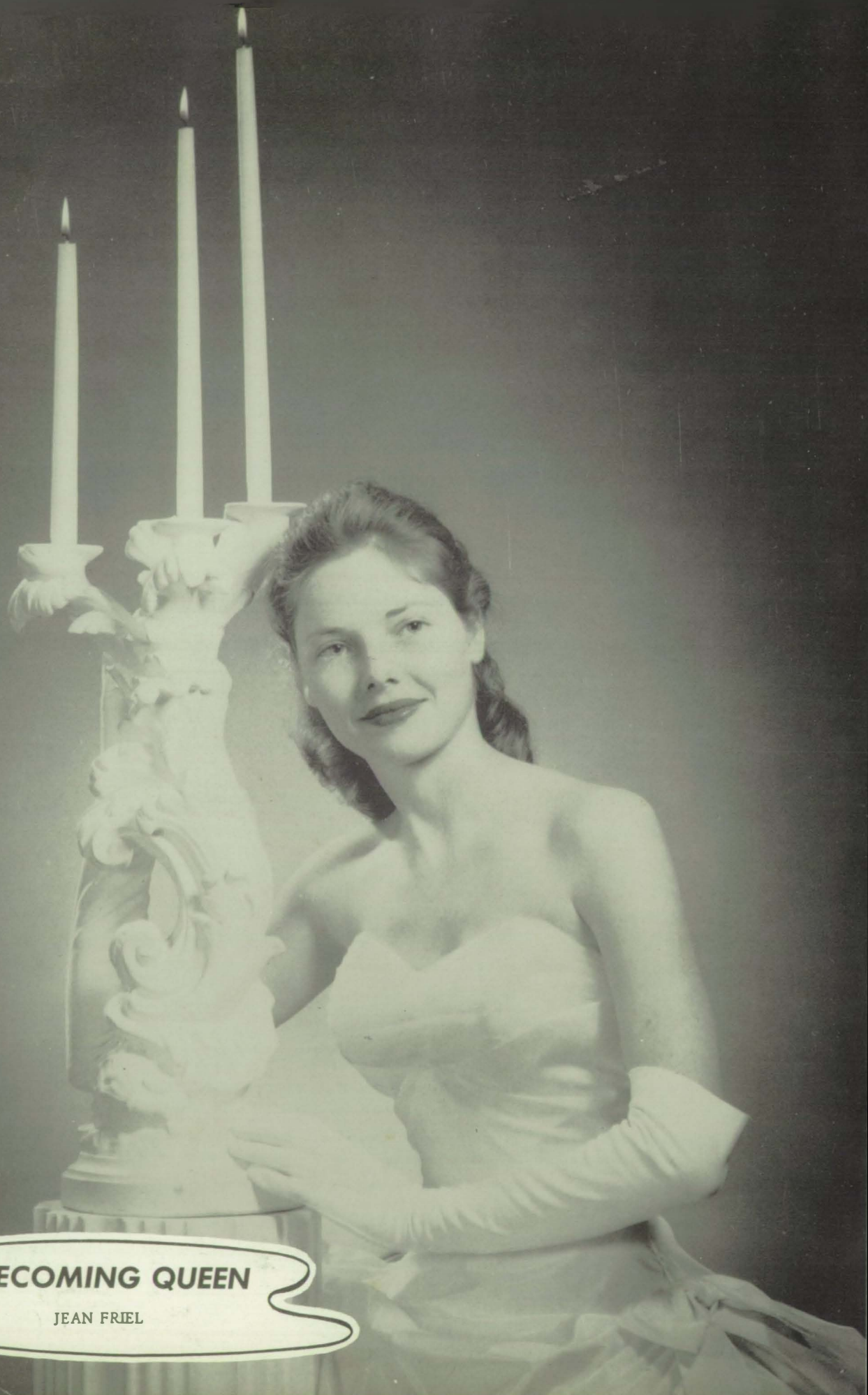
JACK COWSER  
and  
HELEN MASHBURN



**KEY CLUB SWEETHEART**

ANN BLACKBURN





**HOMECOMING QUEEN**

JEAN FRIEL



BETTY REED



INA PATTERSON



JEAN SIBLEY

## AND COURT



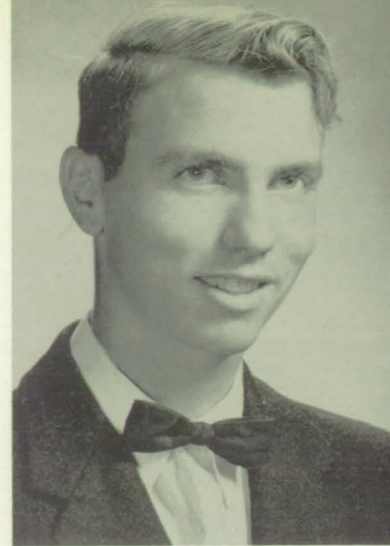




DOROTHY CORLEY  
Girls' State



EVELYN STEWART  
English - History  
Girls' State



EDWARD RODGERS  
Science - Math  
Boys' Outstanding Record



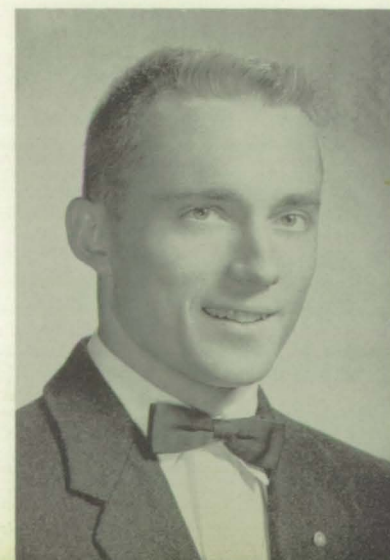
DAVID CHESNUTT  
Boys' State

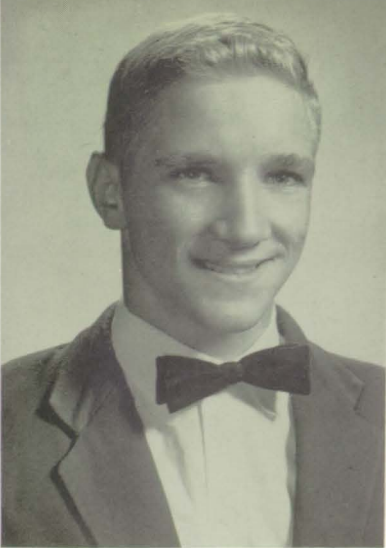
## HONORS

SHARON RICHERSON  
County May Queen

FAYE PRESTWOOD  
Science  
County Good Citizenship Girl  
Study Club Scholarship

PAUL LYLES  
Senior High Salesman





ALBERT McMILLAN  
Key Club  
State Lt. Governor



CECIL COX  
3rd Place Biology  
Regional Science Fair



ERCEL FRIEL  
Band Medal Winner

## HONORS

MARIE EDDING  
Band Outstanding  
Senior



MARIANE WURST  
1st Prize County  
Writers Contest

MARVIN WEEKLEY  
3rd Place District D. O.  
Oratorical Contest

JUDY SKINNER  
Band Medal Winner





Most Likely to  
Succeed



FAYE PRESTWOOD  
WADE FAULKNER

Most Popular



ANN BLACKBURN  
BROWN CROSBY

## SENIOR HIGH

Most Interesting



DOLORES BRYARS  
HAROLD SMITH

Best All Round



JEAN FRIEL  
PAUL LYLES

Biggest Flirts



PAT PRESLEY  
RANDY PRESLEY

Cutest



SHARON RICHERRSON  
NEWMAN SMITH

## WHO'S WHO

Wittiest



SHERRY CRANE  
JACK LONG

Best Dancers



MARIE EDDINS  
JERRY DAVIDSON



Most Friendly



ELNOR HOLMES  
HARRY CAPRARA

Most Charming



JULIA BRISTOW  
TOMMY HAWKINS

## SENIOR HIGH

Most Dependable



JEAN SIBLEY  
DAVID CHESNUTT

Most Talented



ERCEL FRIEL  
LOWELL HOFFMAN

Most Active



JUDY SKINNER  
JOHN McMILLAN

Most Attractive



JUDY LAMBERT  
FRED POWELL

## WHO'S WHO

Most Studios



MARGARET BROUGHTON  
CECIL COX

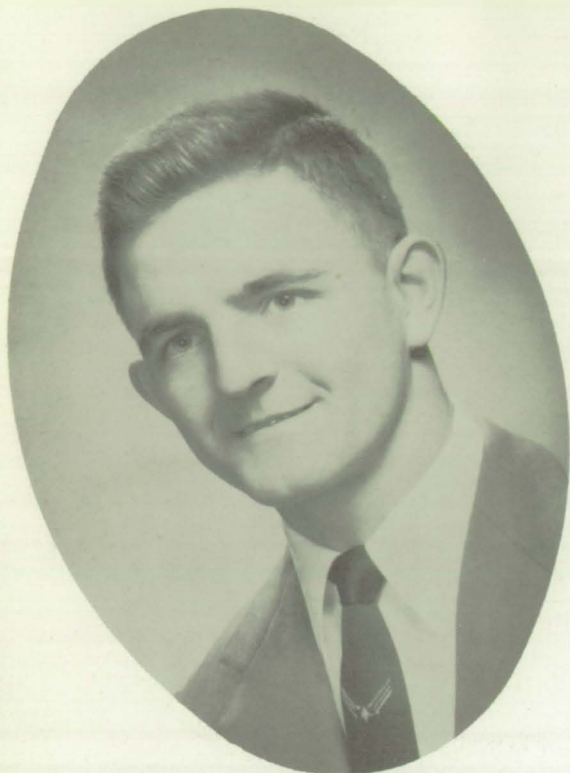
Prettiest Eyes



JUNE SLAUGHTER



Most Athletic



HAROLD HALL

Prettiest Smile



GLINDA NANCE

## **SENIOR HIGH WHO'S WHO**

Prettiest Face



PAT PAGE

Prettiest Hair



MARIANE WURST

Most  
Dependable



CAROLYN CABINESS  
DENNIS BAXENDALE

Most  
Popular



KATHRYN TURNER  
BUTCH BEASLEY

## ***JUNIOR HIGH WHO'S WHO***

Most  
Studios



SANDRA SNOWDEN  
TOMMY QUINLEY

Most  
Attractive



ELAINE TALBAT  
LEON TAYLOR



Most Friendly



CAROLYN BRYARS  
DON HOGAN

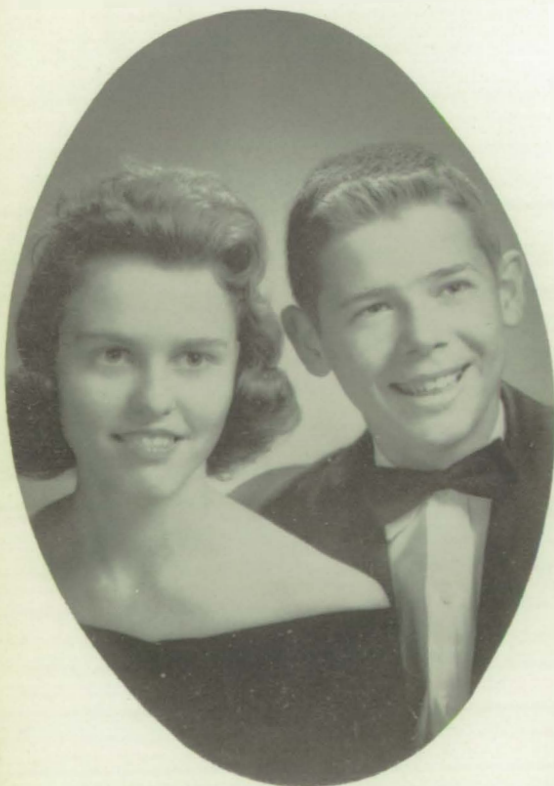
Most Athletic



DALE HALL  
ROSS DAVIDSON

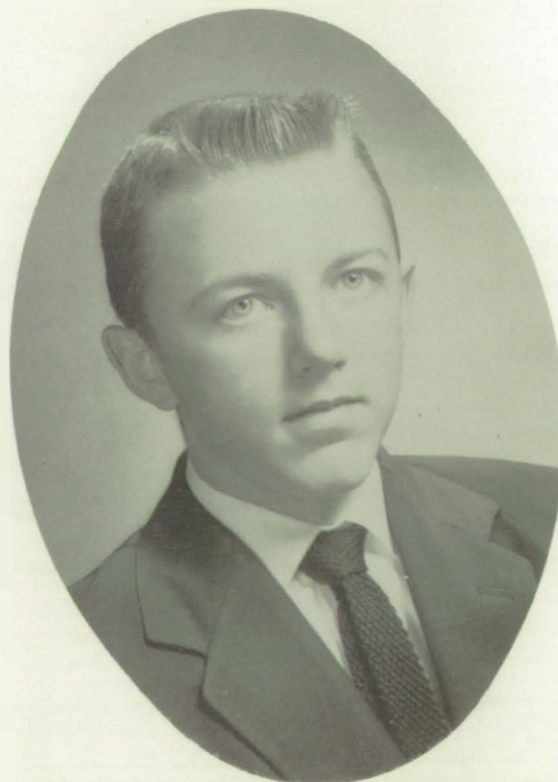
## **JUNIOR HIGH WHO'S WHO**

Cutest

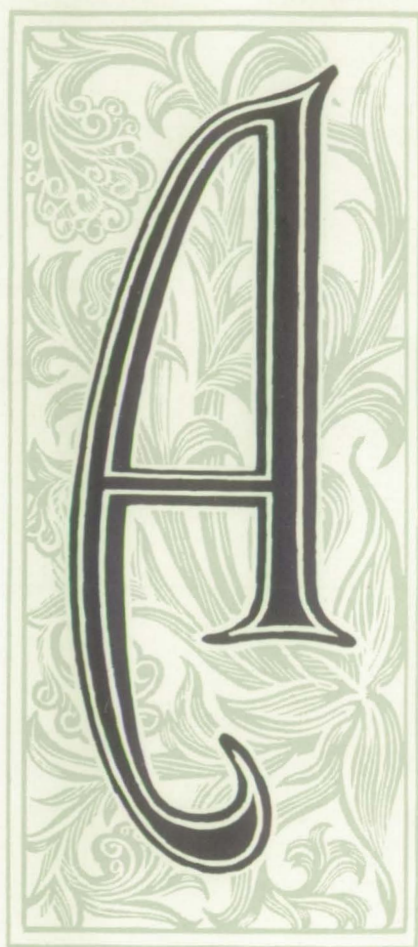


SHERRY STAMPS  
BILL HALL

Most Talented



HELEN WURST  
SAM RUPLE

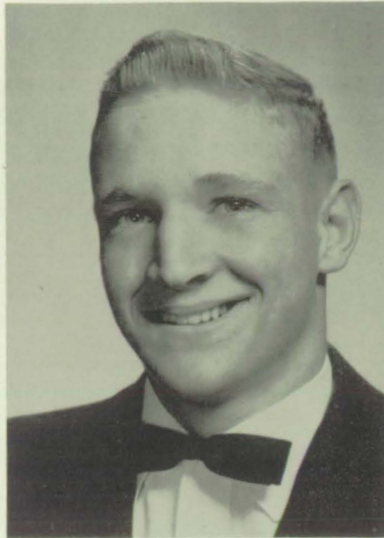


*ctivities*



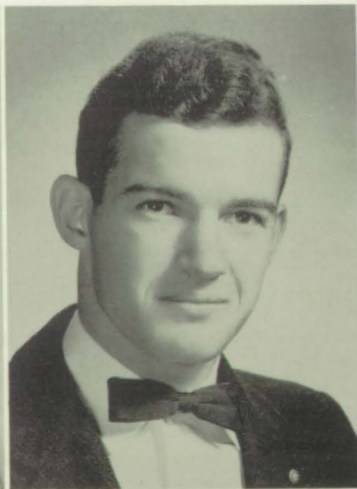


# STUDENT COUNCIL



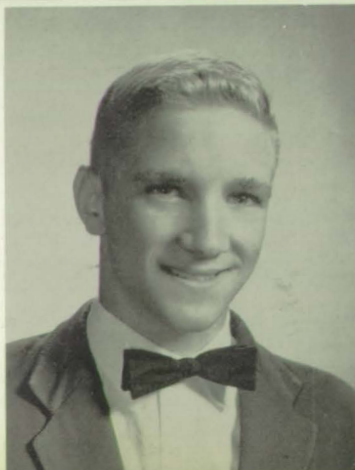
## OFFICERS

LEFT TO RIGHT: Vice-President, Ercel Friel; President, John McMillan; Secretary, Kathryn Turner.



Jack Cowser  
Brown Crosby  
Paul Lyles

Albert McMillan  
Taffy Nelson  
Evelyn Stewart



# T E E N S

# I N C O R P O R A T E D



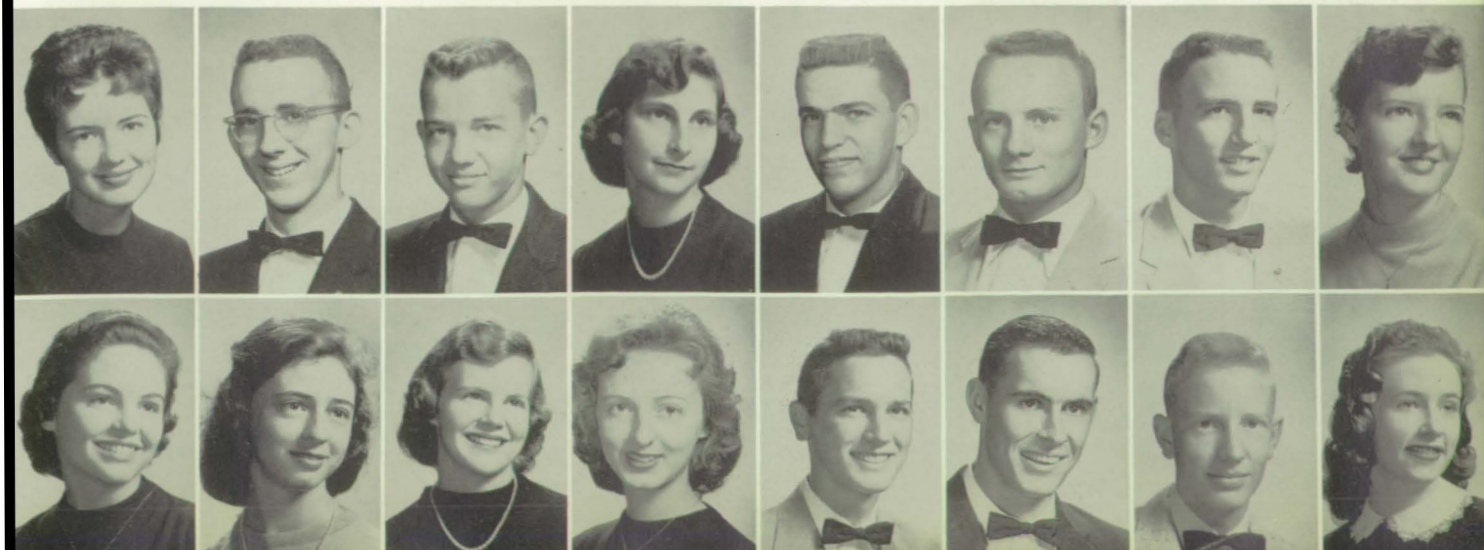
OFFICERS

LEFT TO RIGHT: W. Faulkner, H. Caprara, President; D. Lindsey.  
SEATED: M. Wurst, M. Feulner, J. Bristow, A. Blackburn.



TEENS INC. MASQUERADE BALL

LEFT TO RIGHT: J. Bristow, D. Chesnutt, W. Faulkner, M. Feulner, T. Hawkins, W. Holland, D. Lindsey, D. McDill. SECOND ROW: P. Page, F. Prestwood, B. Reed, J. Skinner, P. Slaughter, H. Smith, C. Walker, M. Wurst.





# BETA CLUB



## OFFICERS

LEFT TO RIGHT: Secretary, Judy Skinner; Corresponding Secretary, Mariane Wurst; Vice-President, Pete Slaughter; Sponsor, Miss West; President, Faye Prestwood; Treasurer, Julia Bristow.



Ann Blackburn  
Carolyn Bray  
Julia Bristow  
David Chesnutt



Dorothy Corley  
Alice Cox  
Cecil Cox  
Emogene Davidson



Peggy Day  
Wade Faulkner  
Betty Ferguson  
Mavis Giddens



Carrol Anne Hastie  
Joyce Hastings  
Nelda Hayles  
Daisy Nell Heaton



Dorothy Nell McDill  
John McMillan  
Ina Patterson  
Pat Presley

Patricia Presley  
Faye Prestwood  
Faye Richerson  
Jean Sibley



Judy Skinner  
Pete Slaughter  
Elizabeth Smith  
Evelyn Stewart



Coy Walker  
Eloise Whidbee  
Barbara Wood  
Mariane Wurst





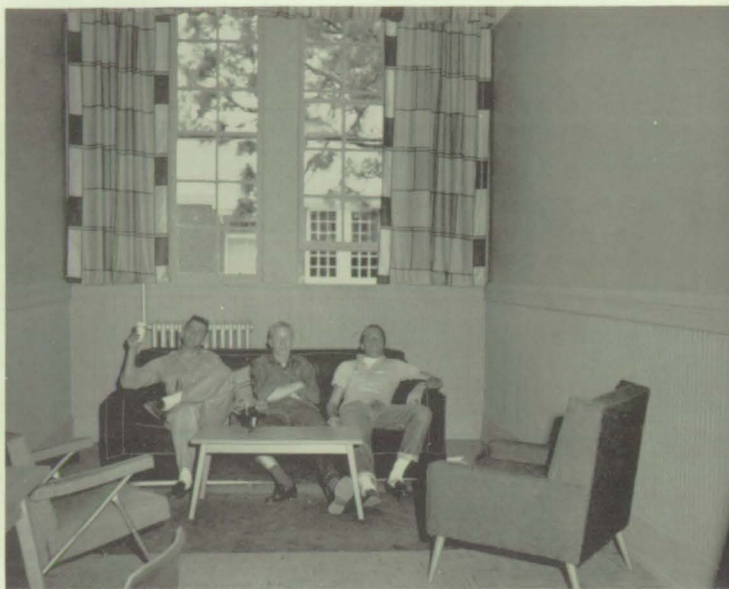
# KEY CLUB



## OFFICERS

LEFT TO RIGHT: Treasurer, Harold Smith; President, David Chesnutt; Secretary, Coy Walker; Reporter, Bill Johnson; Sweetheart, Ann Blackburn; Vice-President, Red Wilkins.

Alabama District Sweetheart.



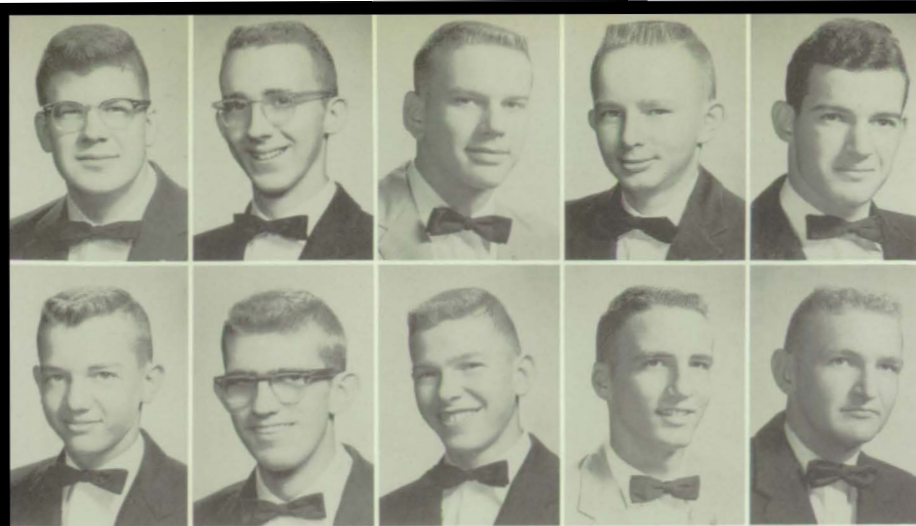
Teachers lounge after redecoration by Key Club.

ABOVE: Sponsor, Mr. White, during sparking days.

BELOW: Proud Key Clubbers at District Conventions.







Newton Beasley  
David Chesnutt  
Jack Cowser  
Cecil Cox  
Brown Crosby

Wade Faulkner  
Lowell Hoffman  
Bill Johnson  
David Lindsey  
Jack Long



International Convention  
in Washington, D. C.



Key Clubbers at Dixon on Disc.

Paul Lyles  
Albert McMillan  
John McMillan  
Allen Nix  
Charles Sheaffer  
Pete Slaughter



Harold Smith  
Buddy Steele  
Kenneth Taylor  
Coy Walker  
Thomas Whitfield  
Taylor Wilkins





# FUTURE HOMEMAKERS OF AMERICA



## OFFICERS

LEFT TO RIGHT: President, Evelyn Stewart; Recording Secretary, Carol Ann Hastie; Historian, Carolyn Seay; Parliamentarian, Elnor Holmes; Treasurer, Sharon Richerson; Song Leader, Dorlice King; Corresponding Secretary, Jackie Eubanks; Vice-President, Trelles Parker (not shown).

LEFT TO RIGHT: J. Brannan, C. Brantly, C. Bray, J. Bryars, R. Bryars, E. G. Byrd, M. Chambless, N. K. Cooper.  
SECOND ROW: S. Crane, C. A. Culver, P. Day, J. Eubanks, F. Feminear, B. Ferguson, G. Flowers, P. Flowers.







LEFT TO RIGHT: S. Flowers, M. Feulner, D. Gainer, M. Giddens, E. Gideons, M. Hall, W. Harrell, C. A. Hastie.  
 SECOND ROW: J. Hastings, N. Hayles, E. Holmes, S. Huggins, R. Johnson, D. King, S. Langham, A. D. Ledkins.  
 THIRD ROW: C. Little, J. A. Long, S. J. Long, S. McDill, P. McGill, C. Norsworthy, P. Page, T. Parker. FOURTH  
 ROW: B. F. Peavey, V. Phillippi, P. Presley, F. Richerson, S. Richerson, P. Rider, R. Roberts, B. N. Robertson. FIFTH  
 ROW: C. Seay, E. Smith, A. Stewart, B. Stewart, E. Stewart, M. Stewart, P. Taylor, K. Thomley. SIXTH ROW: J.  
 Turner, T. Vines, E. Whidbee, D. White, M. J. White, L. Williams, E. Bray, B. Davis.





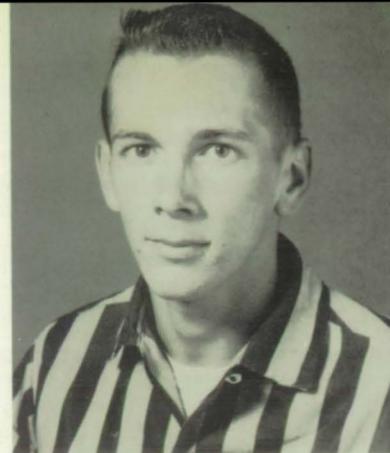
F. F. A. OFFICERS

LEFT TO RIGHT: C. Shaeffer, R. Durant, N. White, B. Ruple, H. Caprara, A. Nix.

## F.F.A.



We put out 15 borders of Bicolor to feed and conserve Quail. Shown above are, LEFT TO RIGHT: Clifford Shiver, Mack Giddens, Joe Hamilton, and Bill Ruple.



KENNETH ROBINSON  
State Fourth Place Winner  
Home Improvement Program.



LLOYD HASTINGS  
Winner  
Baldwin County F.F.A. Tractor Driving Contest.  
SHARON RICHESON  
Ag. Queen





CHARLES DEMKO  
County Winner  
Public Speaking Contest



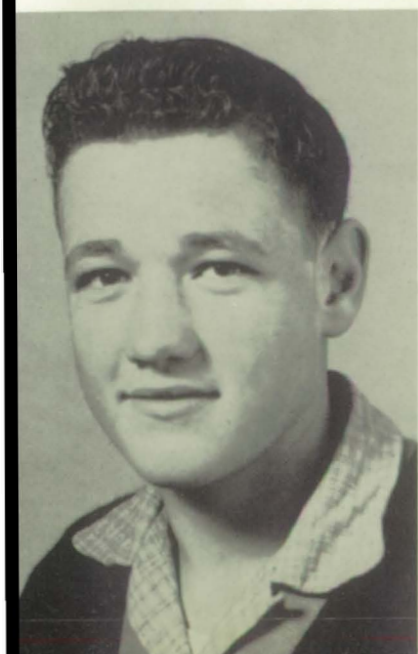
JOE HAMILTON  
Third Place Winner  
State Forestry Contest



DERWOOD BIGGS  
County Champion  
F. F. A. Corn Contest  
C. Weekley, C. Stewart,  
B. C. H. S. F. F. A. put out  
43, 000 seedlings.



Second Place Dairy Contest Winners.





# D.O. CLUB



## OFFICERS

Reporters, Willie Mosley, Glinda Nance; President, Jack Cowser; Sponsor, Mr. Jones; Treasurer, Marvin Weekley; Vice-Presidents, Dorothy Peterson and Jack Long; Secretary, Emogene Davison.



Coordinator's hobby



D. O. class



Christmas party



District Convention  
Jackson, Alabama

LEFT TO RIGHT: N. Beasley, J. Cowser, J. Cox, E. Davidson, S. Eddins, H. Fillingim, W. Holland, Jack Long. SEC-  
OND ROW: O. Long, V. Mahalonich, W. Mosley, G. Nance, D. Peterson, R. Talbot, B. Wallace, M. Weekley.







State Convention



Students on the job



District Officers

HARRY FILLINGIM  
WAYNE HOLLAND

WILLIE MOSLEY  
MARVIN WEEKLEY  
EMOGINE DAVIDSON

LOTTIE SIMPSON  
CAR WASH

RAY TALBOT  
RICHARD DORMAN



### Snapshots





# FUTURE TEACHERS



F. T. A. OFFICERS



LEFT TO RIGHT: Treasurer, Pat Page; Secretary, Jean Sibley; Advisor, Mrs. Bennett; Vice-President, Elnor Holmes; President, Dorothy Nell McDill.

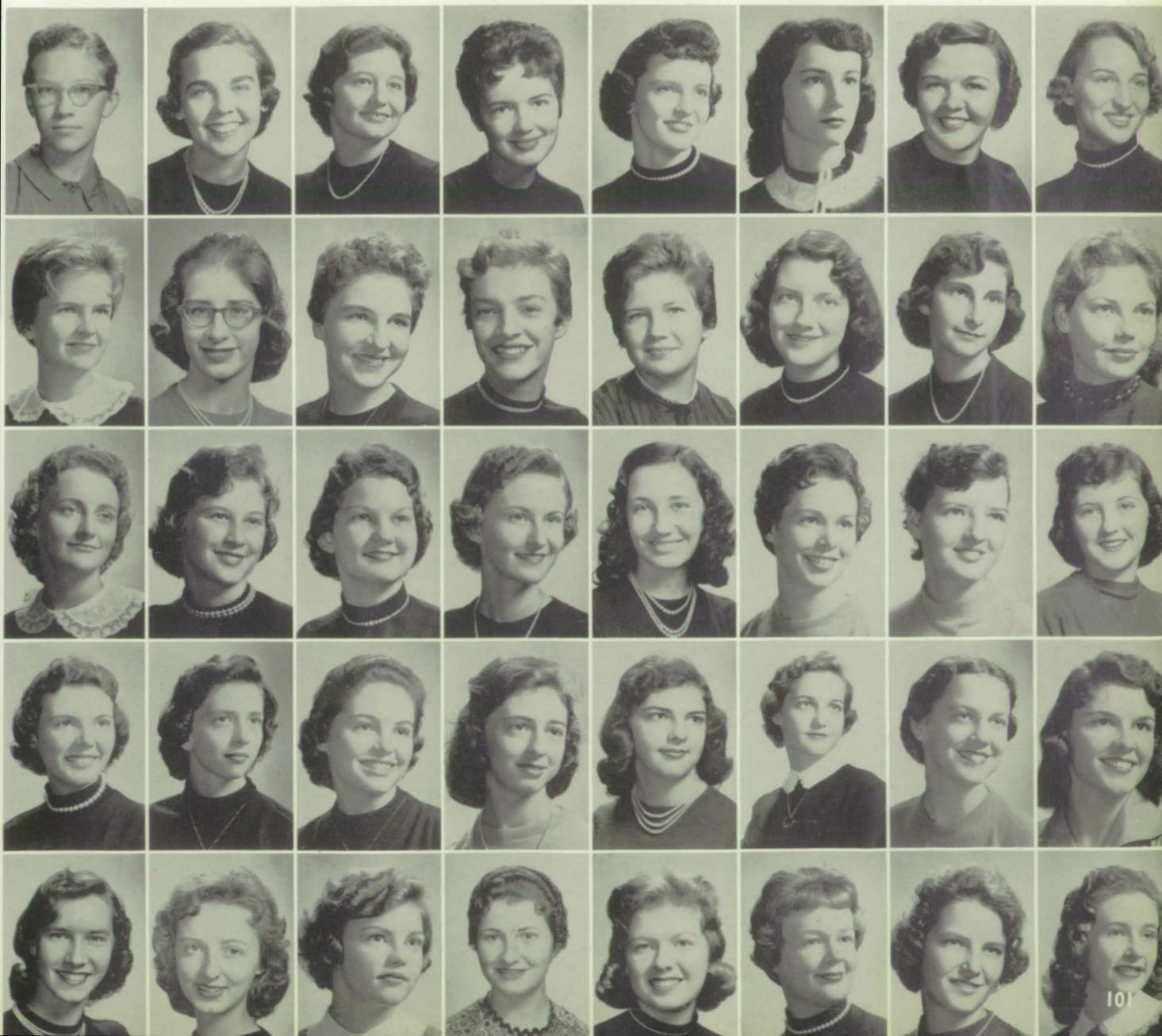


CLUB MEETING

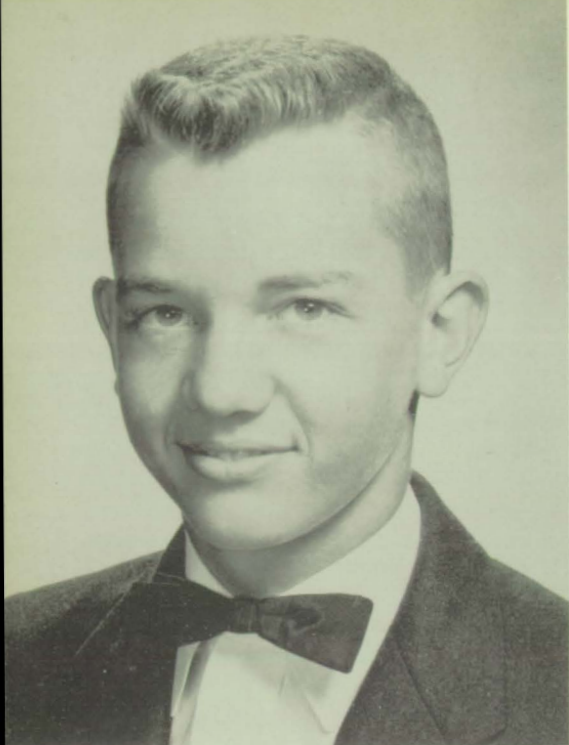


# OF AMERICA

LEFT TO RIGHT: L. Adams, A. Blackburn, J. Brannan, J. Bristow, P. Cabiness, M. Chambliss, D. Corley, S. Crane. SECOND ROW: C. Culver, P. Day, M. Eddins, J. Eubanks, F. Feminear, B. Ferguson, M. Feulner, J. Friel. THIRD ROW: M. Giddens, C. Hastie, E. Holmes, S. Huggins, R. Johnson, D. King, D. McDill, M. McDill. FOURTH ROW: L. McMillan, C. Norsworthy, P. Page, F. Prestwood, F. Richerson, S. Richerson, B. Robertson, C. Seay. FIFTH ROW: J. Sibley, J. Skinner, J. Slaughter, F. Thompson, T. Vines, E. Whidbee, B. Wood, M. Wurst.







WADE FAULKNER  
Editor-in-Chief

## BALCOALA

Another year and another yearbook. We, of the staff, have devoted a lot of time to putting together a yearbook to suit you, the students. We hope that our time has been well spent and that you are pleased with our publication.

This is the 36th edition of the Balcoala. A lot of good staffs have worked with the past editors of this annual, but I feel that I had serving with me one of the best. I am especially grateful to my assistant editors, Ann Blackburn and Jean Friel, who never missed an annual meeting and were always ready to work, and did so up until the day we mailed the final copy to Dallas. To David Chesnutt, I would like to say thanks for doing such a fine job with the financial end of this book. I am also grateful to Bill Johnson, who was always around with his camera, and Lowell Hoffman, who was mighty handy with a pen.

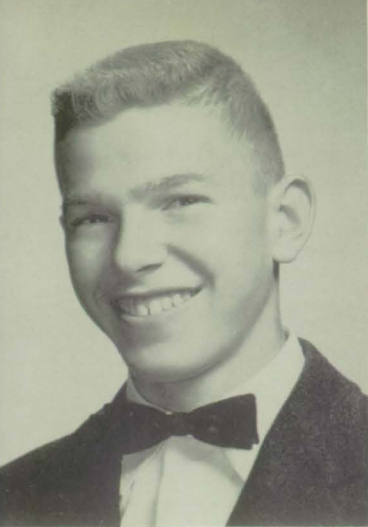
To these people and the rest of the staff, along with Mr. Daniels and Mr. Nealey, our advisors, I want to say thanks for helping me make this year's annual possible.

ANN BLACKBURN  
Assistant Editor

JEAN FRIEL  
Assistant Editor

DAVID CHESNUTT  
Business Manager





BILL JOHNSON  
Photographer and  
Sales Manager

LOWELL HOFFMAN  
Art Editor

JACK COWSER  
Assistant Business  
Manager

WILFORD NEALEY  
Advisor



JUDY SKINNER  
Assistant Literary Editor

DAVID LINDSEY  
Sports Editor

PAT PRESLEY  
Publicity Editor





# SCIENCE CLUB

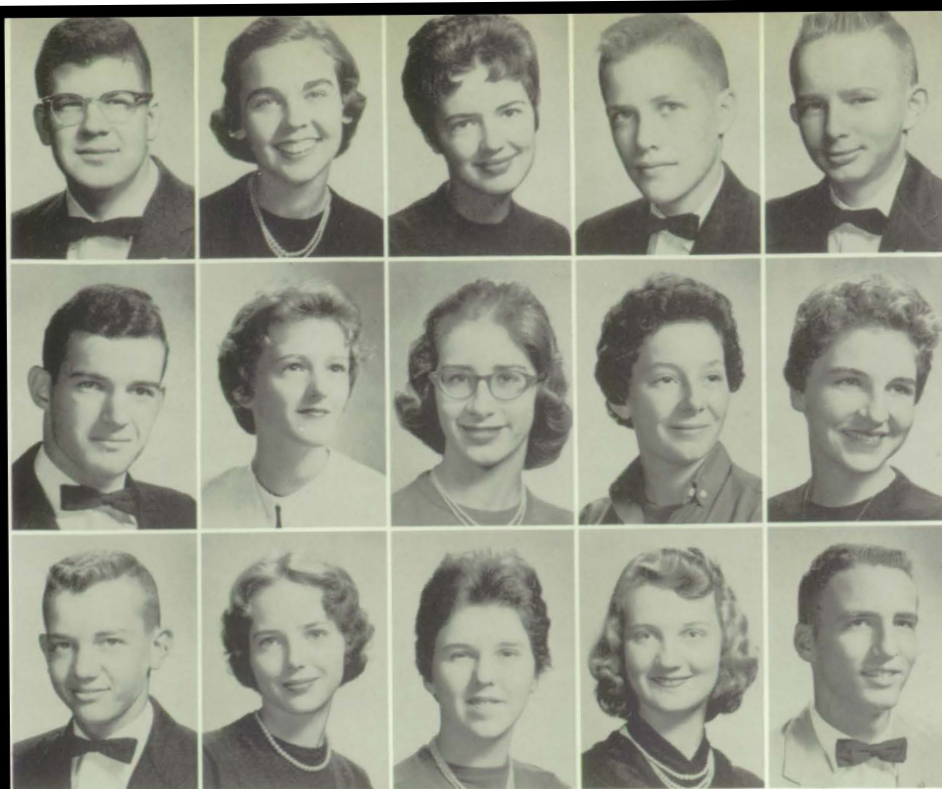


## OFFICERS

LEFT TO RIGHT: Recording Secretary, Mariane Wurst; President, Cecil Cox; Corresponding Secretary, Judy Skinner. SEATED: Vice-President, Faye Prestwood; Advisor, Miss Leonard; Treasurer, Marie Eddins.

## CLUB MEETINGS





Newton Beasley  
Ann Blackburn  
Julia Bristow  
Kenneth Cooper  
Cecil Cox

Brown Crosby  
Sarah Daniels  
Peggy Day  
Glenda Durant  
Marie Eddins

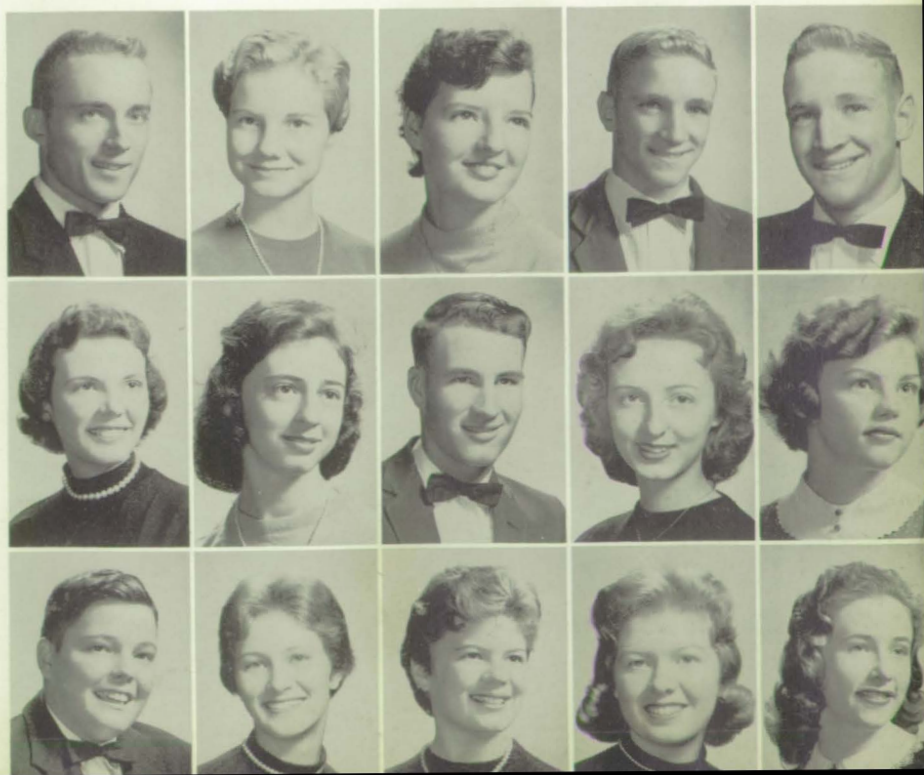
Wade Faulkner  
Ercel Friel  
Dolores Gainer  
Daisy Nell Heaton  
David Lindsay



Paul Lyles  
Glenda McCartha  
Dorothy Nell McDill  
Albert McMillan  
John McMillan

Linda McMillan  
Faye Prestwood  
Luthur Quinley  
Judy Skinner  
June Slaughter

Charles Strong  
Patsy Taylor  
Jane Turner  
Tonya Vines  
Mariane Wurst







# IGER BAND



Band Director - FORD ALFORD

Drum Majorette - ERCEL FRIEL





#### OFFICERS

LEFT TO RIGHT: Penelope Miller, Librarian; Thomas Whitfield, David Lindsey, Quartermasters; Ercel Friel, Drum Majorette; David Chesnutt, Band Captain; Coy Walker, Quartermaster; Pat Page, Secretary. ABOVE: Mr. Alford, Director.

#### SENIOR BAND MEMBERS

LEFT TO RIGHT: Miriam Russell, Marie Eddins, Thomas Whitfield, David Lindsey, David Chesnutt, Judy Skinner.







Final Concert



District Band Festival



Helping out at Pep Rally

Band at work

Band at play





## GLEE CLUB





# TIGER'S ROAR

## STAFF

Editor - - - - - DAVID CHESNUTT  
 Assistant Editors - - - - - WADE FAULKNER  
   MARIANE WURST  
 Business Manager - - - - - BETTY REED  
 Circulation Manager - - - - MARGARET FEULNER  
 Stylist - - - - - JULIA BRISTOW  
 Books on Review - - - - - ERCEL FRIEL  
 Senior Hi Scoop Snoop - - - - JUDY SKINNER  
   NOBIE COOPER  
   DAISY HEATON

Junior Hi Scoop Snoop - - - - CHARLOTTE LYLES  
   CAROLYN BRYARS  
 Special Reporters - - - - - TRELLIS PARKER  
   MARGARET BROUGHTON  
   BETTY FERGUSON  
   PAT PAGE  
 Sports Editors - - - - - BILL JOHNSON  
   DAVID LINDSEY  
 Art Editor - - - - - LOWELL HOFFMAN  
 Exchange Editor - - - - - PAT PRESLEY  
 Club Editor - - - - - ANN BLACKBURN





Putting the paper together

J. Bristow  
E. Friel  
T. Parker

D. Chesnutt  
D. Heaton  
P. Presley

N. Cooper  
L. Hoffman  
B. Reed

W. Faulkner  
B. Johnson  
J. Skinner

B. Ferguson  
D. Lindsey  
M. Wurst

M. Feulner  
P. Page  
A. Blackburn





# MUSIC CLUB



## OFFICERS

LEFT TO RIGHT: President, Judy Skinner; Vice-President, Jean Friel; Secretary, Ann Blackburn; Treasurer, Julia Bristow.

## INITIATION OF NEW MEMBERS



LEFT TO RIGHT: A. Blackburn, J. Brannan, C. Brantly, J. Bristow, D. Bryars, N. K. Cooper, C. A. Culver, M. Feulner, E. Friel, J. Friel. SECOND ROW: S. Huggins, P. Miller, P. Page, I. Patterson, S. Richerson, J. Skinner, P. Taylor, J. Turner, T. Vines, M. Wurst.





# "B" CLUB



## OFFICERS

LEFT TO RIGHT: President, Harold Hall; Vice-President, Brown Crosby; Secretary, Harold Smith; Treasurer, Larry Catrett.

## FOOTBALL DANCE



## "B" CLUB INITIATION



LEFT TO RIGHT: A. Blackburn, L. Catrett, B. Clemmons, N. Cooper, D. Corbett, S. Crane, B. Crosby, C. Hastie, D. Heaton, S. Langham. SECOND ROW: J. McMillan, A. Nix, F. Powell, L. Quinley, S. Richerson, H. Smith, N. Smith, J. Turner, T. Wilkins.





# LIBRARY CLUB



## OFFICERS

LEFT TO RIGHT: Treasurer, Jean Sibley; Secretary, Trelles Parker;  
Vice-President, Dorothy Corley; President, Elizabeth Smith.

L. Adams  
B. Robertson

D. Corley  
J. Sibley

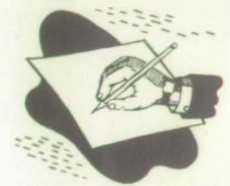
A. Flowers  
E. Smith

D. Gainer  
B. Wood

T. Parker

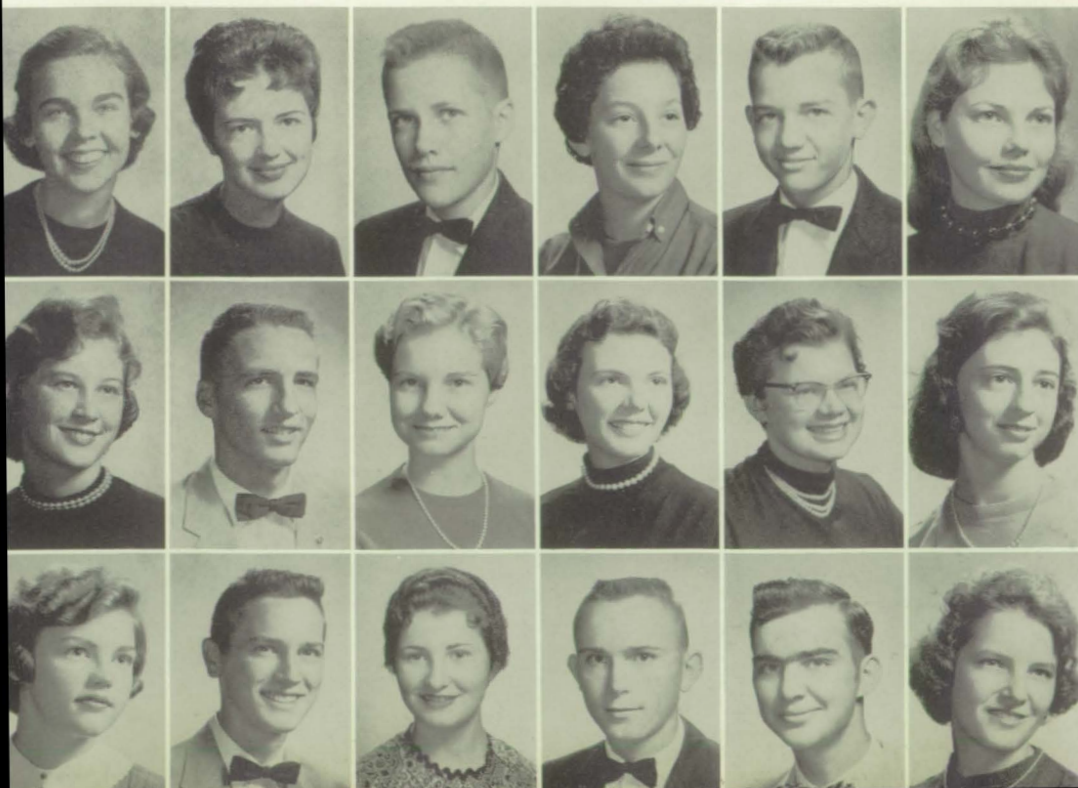


# FOREIGN LANGUAGE CLUB



## OFFICERS

LEFT TO RIGHT: Vice-President, Thomas Whitfield; Reporter, Pete Slaughter; Treasurer, Barbara Wood; President, Dorothy Nell McDill; Secretary, Faye Prestwood.



Ann Blackburn  
Julia Bristow  
Kenneth Cooper  
Glenda Durant  
Wade Faulkner  
Jean Friel

Carol Ann Hastie  
David Lindsey  
Glenda McCartha  
Linda McMillian  
Peggy J. Phillips  
Faye Prestwood

June Slaughter  
Pete Slaughter  
Faye Thompson  
Nolan White  
Thomas Whitfield  
Barbara Wood





Before

After





*thletics*









Assistant Coach  
JOE MOORE



Assistant Coach  
JERRY BENSON



Head Coach  
JOHN JENNINGS

Captain  
BROWN CROSBY



Co-Captain  
RED WILKINS



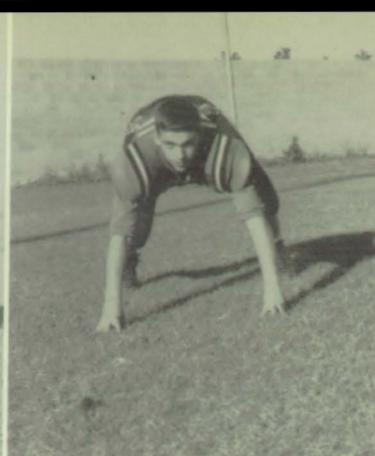




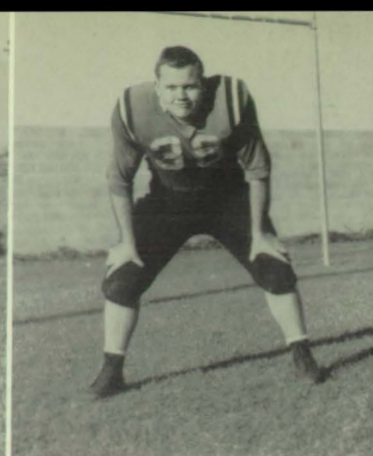
LARRY CATRETT  
Quarterback  
Number 12



HAROLD HALL  
Halfback  
Number 16



TOMMY HAWKINS  
Guard  
Number 25

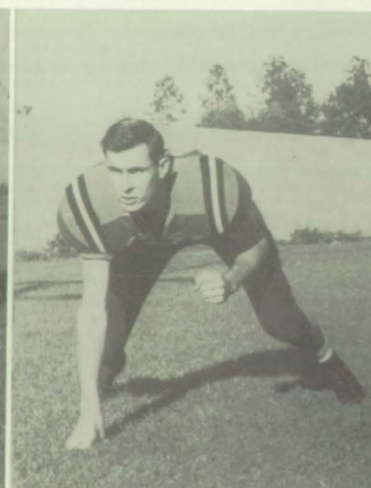


CLAUDE JOHNSON  
Tackle  
Number 39

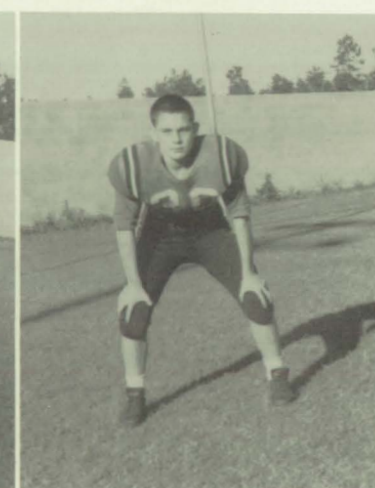
JOHN McMILLAN  
Center  
Number 23



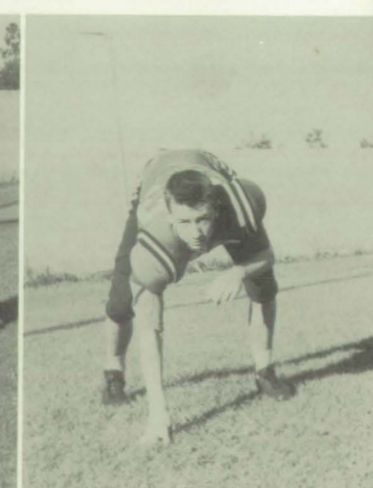
HAROLD SMITH  
Tackle  
Number 37



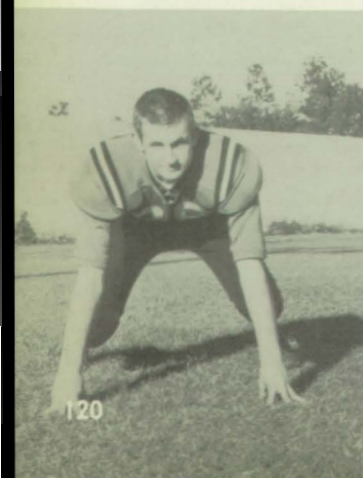
ALLEN NIX  
Fullback  
Number 20



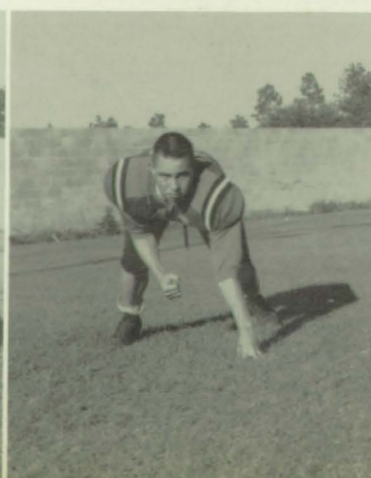
DON BECKER  
End  
Number 33



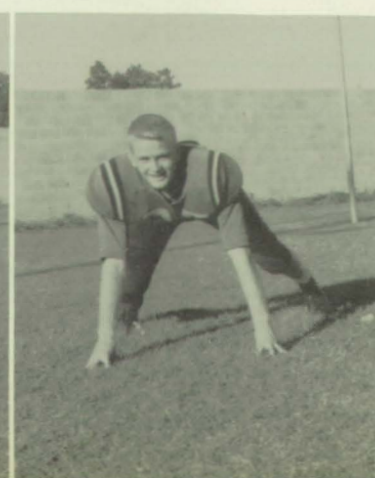
DONALD JAYE  
Tackle  
Number 28



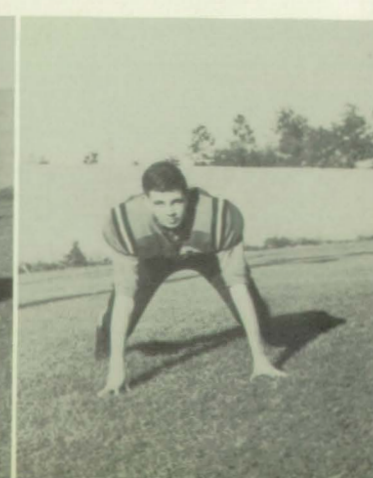
MILTON JONES  
Fullback  
Number 41



NEWMAN SMITH  
Guard  
Number 27



FRANK SMITH  
Tackle  
Number 42



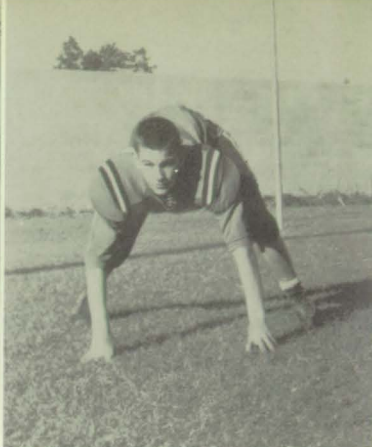




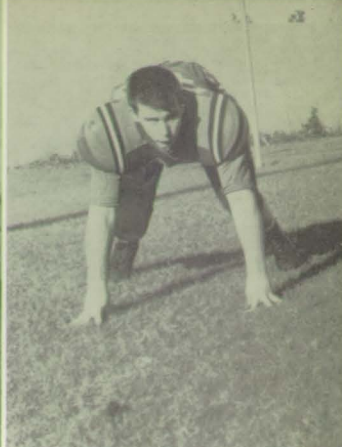
HARRY CAPRARA  
Quarterback  
Number 18



JERRY DAVIDSON  
Halfback  
Number 10



BUFORD CONWAY  
Center  
Number 13



CHARLIE WILLIAMS  
Tackle  
Number 32

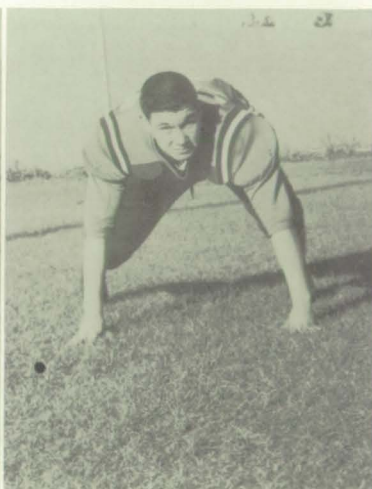
CLARENCE SMITH  
Tackle  
Number 36



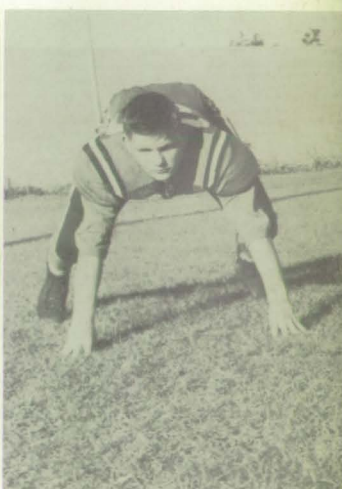
WENDELL MOSLEY  
Guard  
Number 31



DOUG GOINS  
Guard  
Number 24



CONNIE HINOTE  
Guard  
Number 30\*



ROSS DAVIDSON  
Halfback  
Number 29



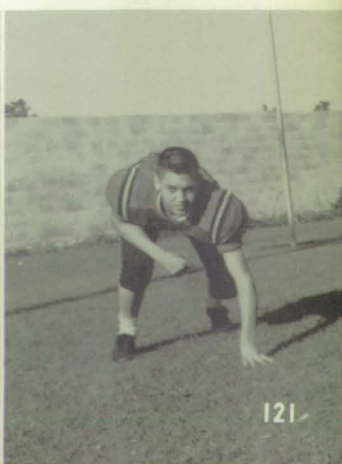
TOMMY STRICKLAND  
Halfback  
Number 19



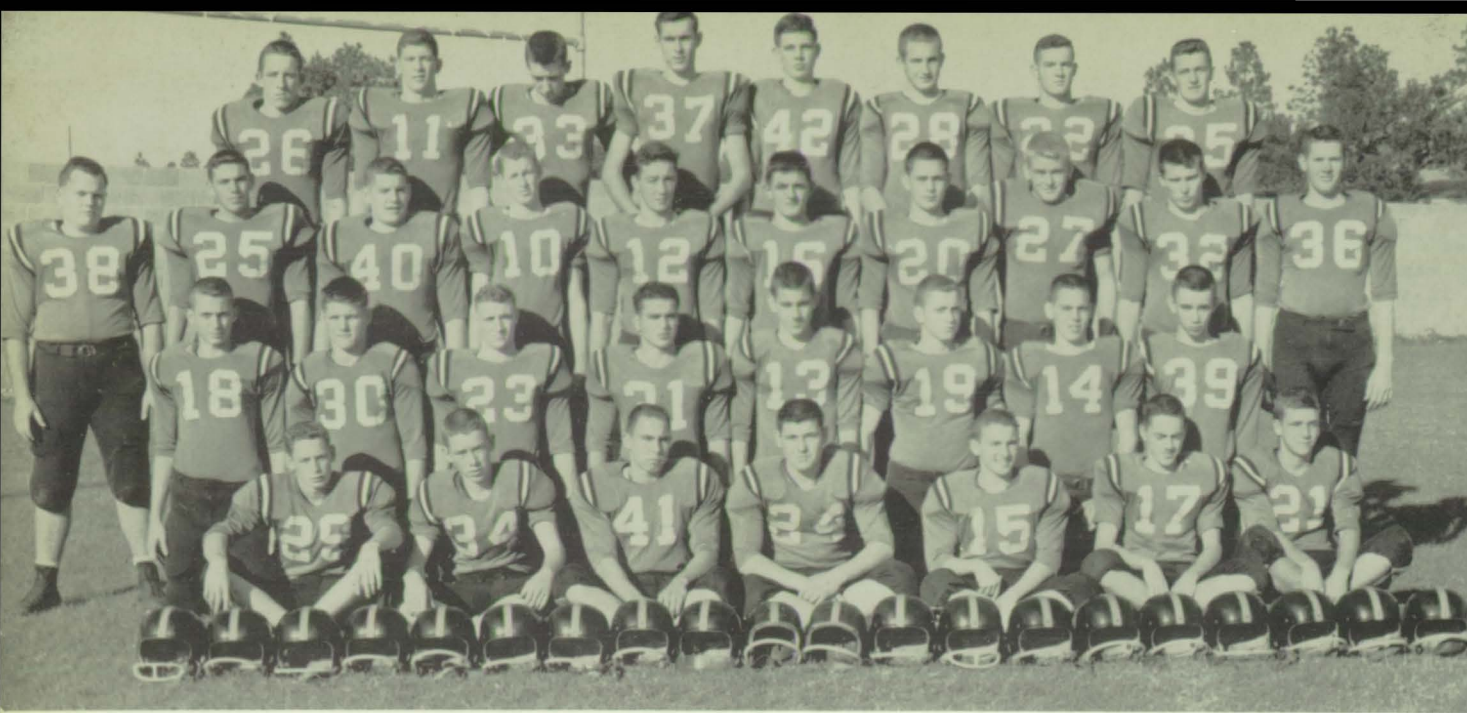
DON HOGAN  
Halfback  
Number 15



JOHNNY NIX  
Halfback  
Number 14







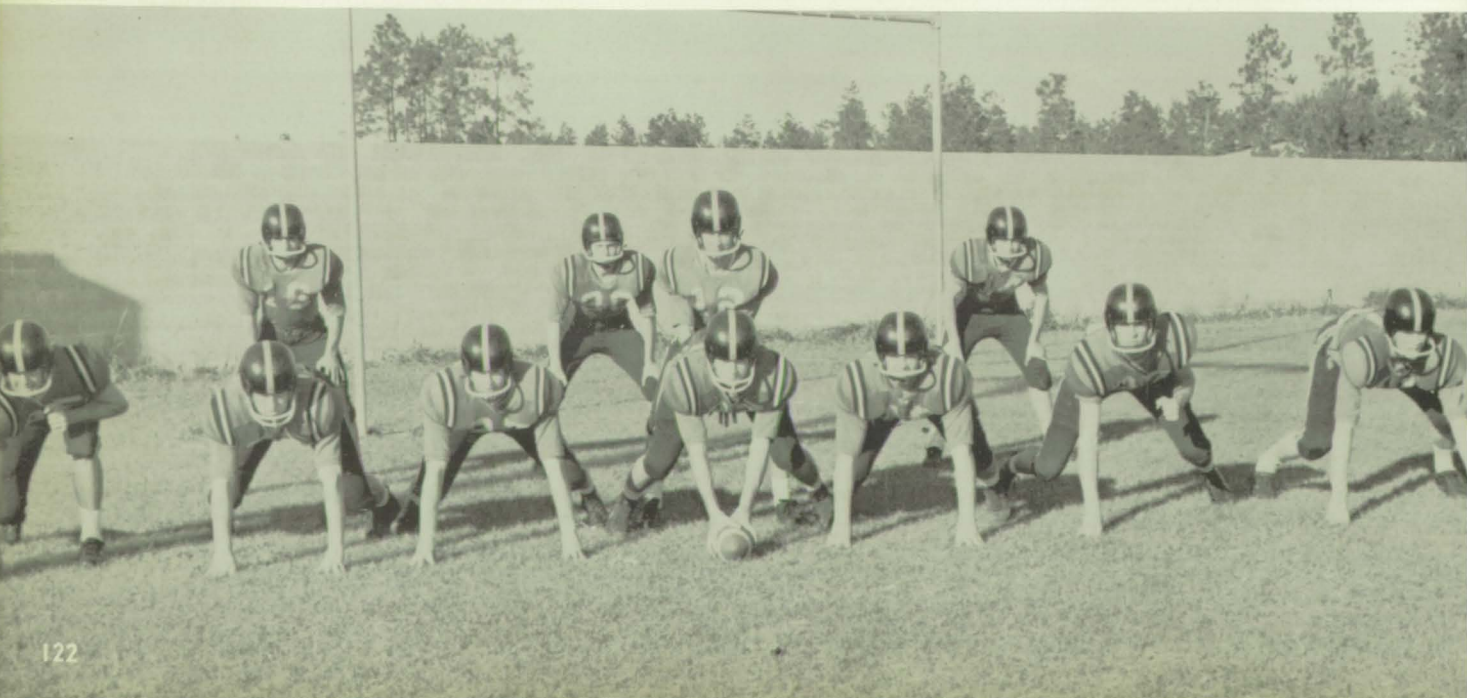
BALDWIN COUNTY HIGH SCHOOL TIGER TEAM

SCORES  
WON 7 LOST 3

Excel	0	B. M.	27	T. R. Miller	0	B. M.	19
Fairhope	7	B. M.	13	Frisco City	6	B. M.	12
Jackson	6	B. M.	26	Foley	14	B. M.	12
Robertsdale	13	B. M.	6	Ernest Ward	7	B. M.	27
Chatom	0	B. M.	25	Atmore	13	B. M.	0

STARTING LINEUP

Quarterback, L. Catrett; Center, B. Crosby; Halfbacks, H. Hall, J. Nix; Fullback, A. Nix; Guards, N. Smith, D. Corbett; Tackles, B. Clemmons, H. Smith; Ends, F. Powell, R. Wilkins.





The Russians thought they could put them high!!



Help him out, somebody!



LEFT TO RIGHT: Eddie Hartner, Joe Stuckey, Albert McMillan, Cordell Dempsey - Managers.

Boy! Did he get hit!



The Last Victory



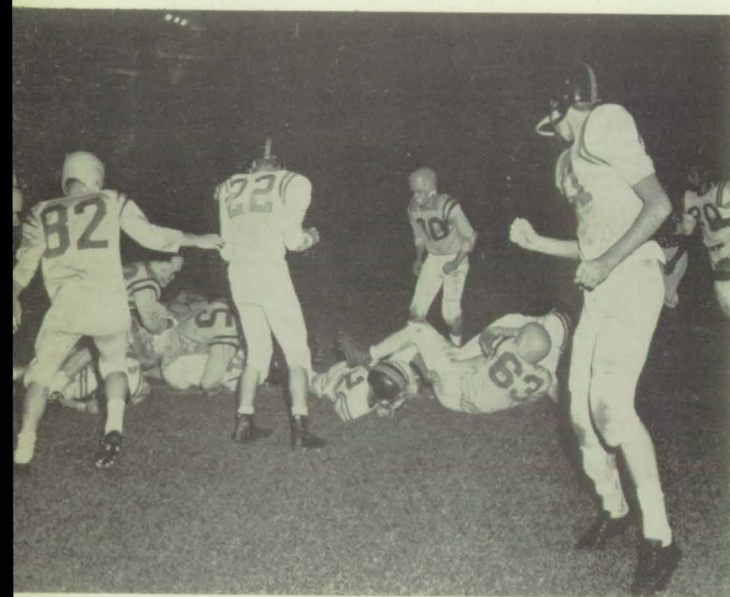




Thats telling him, Nix.



Another Bulldog bites the dust.

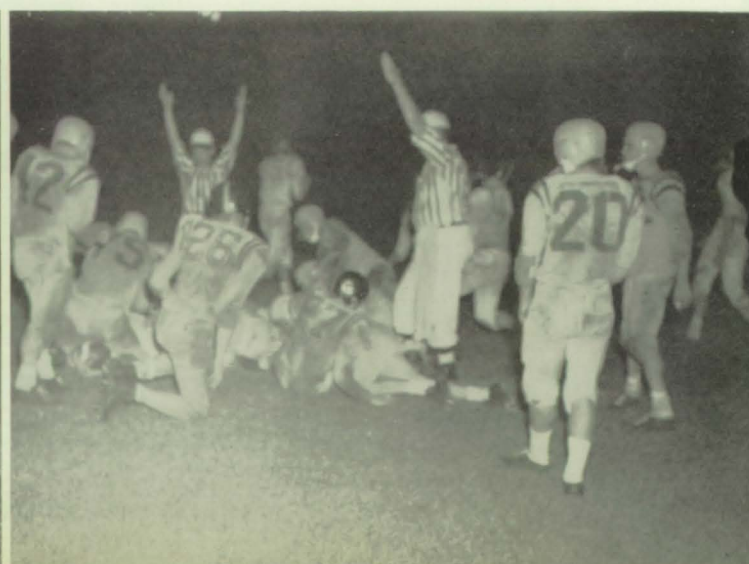


Boy! Was he plastered.

Time out for a drink.

## TIGERS

Six more for the Tigers.





How about it, Ref?



See ya around

## IN ACTION



Having fun, boys?

Are they mixed up?

Watch that foot, Fred





# CHEERLEADERS



LEFT TO RIGHT: Sharon Richerson, Ann Blackburn, Carrol Anne Hastie, Sherry Crane, Daisy Nell Heaton, Sheron Langham, Nobie Kay Cooper, Jane Turner.

ANN BLACKBURN

SHARON RICHERSON  
Head Cheerleader

SHERON LANGHAM





Building a pyramid



Time Out



Bringing them on the field



Pep Rally

JANE TURNER

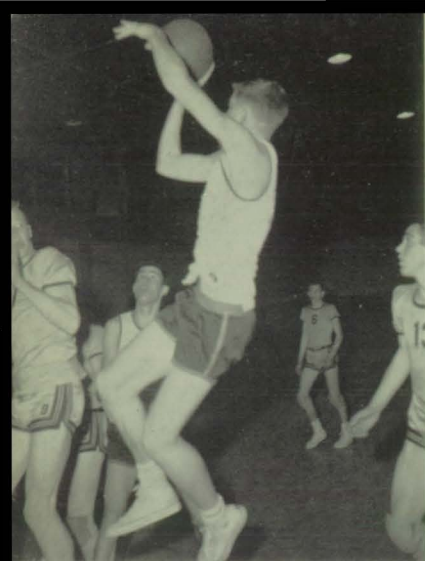
CARROL ANNE HASTIE

SHERRY CRANE

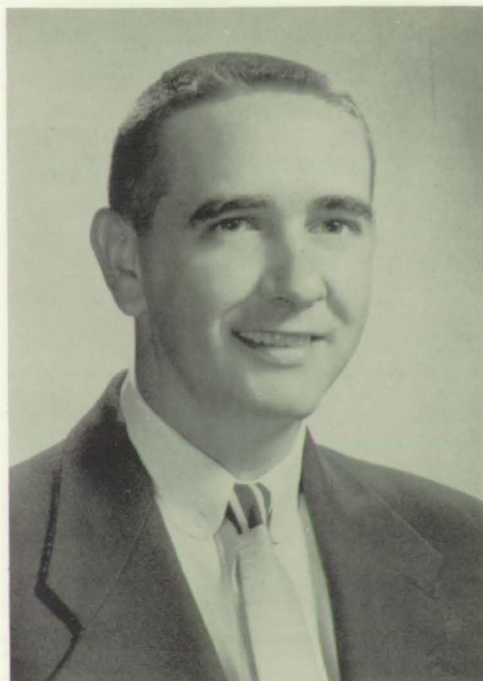




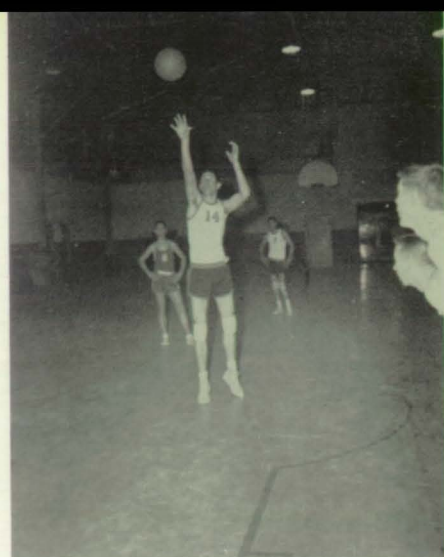
# BASKETBALL



What do I do now??



Coach  
JOE MOORE



Big Boy Smith shoots

## BASKETBALL

Forwards, L. Brown, R. Allen, D. Jaye; Guards, N. Smith, N. White, H. Duck, A. Nix, A. McMillon, J. McMillon, H. Harrelson; Centers, K. Taylor, H. Smith.





Just a little more



Did he make it??



Two points coming up

#### GAMES

B. M.	38	Organic	40
B. M.	43	Organic	31
B. M.	49	Ernest Ward	42
B. M.	53	Fairhope	31
B. M.	51	Robertsdale	39
B. M.	60	Fairhope	45
B. M.	52	Robertsdale	45
B. M.	39	Ernest Ward	51
B. M.	55	Atmore	63
B. M.	41	Grand Bay	50
B. M.	41	Atmore	33
B. M.	43	Foley	65
B. M.	45	Grand Bay	38
B. M.	43	Robertsdale	61
B. M.	39	Foley	67

#### INDIVIDUAL SCORES

##### "A" TEAM

F. Powell	101
T. Hawkins	1
J. Davidson	50
L. Brown	9
H. Smith	70
K. Taylor	28
D. Jaye	113
L. White	33
T. Wilkins	275

##### "B" TEAM

T. Strickland	23
A. Nix	2
H. Harrellson	86
W. Mosley	1
A. McMillan	42
H. Duck	4
J. McMillan	78
N. Smith	24
R. Allen	100

Albert shoots one



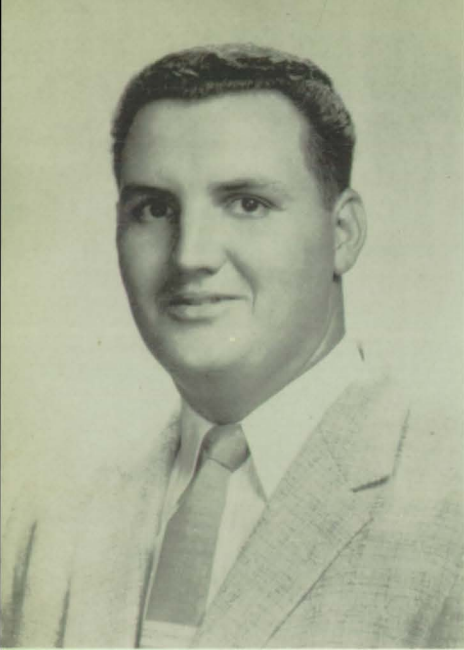
Every man for himself



Get your big hand down







Coach, JERRY BENSON

## BASEBALL

B. M.	1	Foley	15
B. M.	2	Fairhope	3
B. M.	7	Ernestward	8
B. M.	0	Foley	4
B. M.	2	Atmore	9
B. M.	5	Fairhope	3

WON - 1

LOST - 5

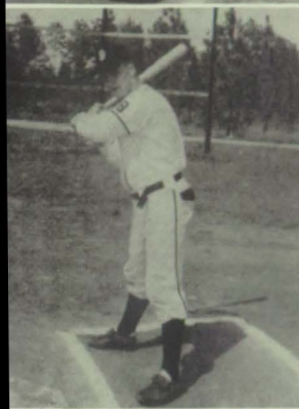


TOP ROW, left to right: R. Wilkins, B. Crosbey, J. Davidson, D. Jaye, H. Smith. MIDDLE ROW: L. Hastings, C. Williams, D. Johnson, L. Quinley, H. Boeschen, H. Duck, B. Beasley, C. Gant, R. Davidson.





R. DAVIDSON  
Centerfield  
J. DAVIDSON  
First Base  
CHARLIE GANT  
Second Base

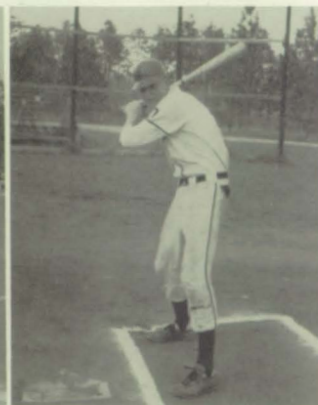


C. WILLIAMS  
Right Field  
B. CROSBY  
Left Field  
L. QUINLEY  
Catcher

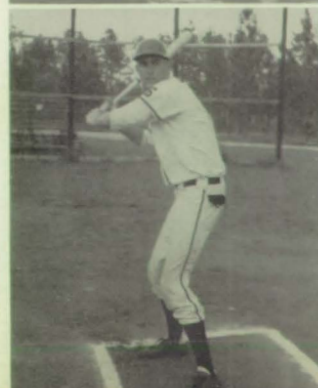


D. JAYE  
Right Field  
B. BEASLEY  
Shortstop  
H. DUCK  
Centerfield

P. LYLES  
Right Field  
R. WILKINS  
Third Base  
D. JOHNSON  
Pitcher

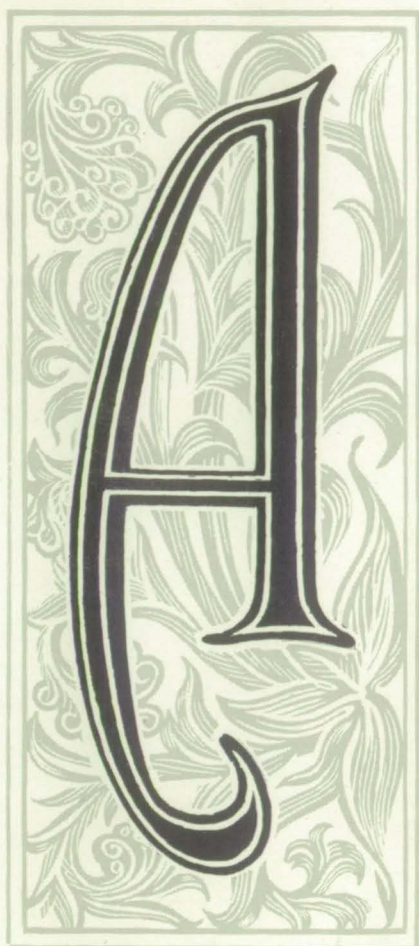


H. SMITH  
First Base  
H. BOESCHEN  
Center Field  
L. HASTINGS  
Shortstop









*advertisers*





Compliments

of

**WILSON-  
HOGAN**

FURNITURE CO.

"First in Fine Furniture"

Court House Square

Bay Minette

**BALDWIN**

TIRE STORE

Goodyear and

General Electric

Bay Minette and Foley



**STACEY'S**

DRUG STORE

"Where the Crowd Meets"

Bay Minette, Alabama

Compliments of

*J. A. Ertzinger  
and Son*

Compliments of

**McCARTHA'S**

DEPT. STORE

Bay Minette, Ala.



*Langham's*

LLOYD AND TOMMY

Phone 4791

Bay Minette, Alabama

Compliments of

**PEOPLES**

MARKET

T. J. DAVIDSON, Prop.

Groceries - Best Quality Meats  
Phone 7165

Compliments of

**FRASIER'S**

VARIETY STORE

Bay Minette, Alabama

*Better Values*

"The Most Walked About  
Shoes in Town"

**DAMRICH**

SHOE CO.

205 Dauphin St.  
Mobile, Ala.



"For the Best Seafood  
Anywhere"

It's

**PALMER'S**

CAFE

On the Causeway  
Box 8 Daphne, Ala.  
Phone HE 8-9952

Compliments of

**MALBIS BAKERY**

If It's Baked by Malbis

It's Good

Compliments of

**W. R. STUART**

PROBATE JUDGE

Compliments of

**"BIG ED"  
TUNSTALL**

TAX ASSESSOR

Compliments

of

*Taylor Wilkins*



**STANDARD**  
FURNITURE MANUFACTURING  
CO.

Bay Minette, Alabama

Compliments of

**TELFAIR MASHBURN**

Compliments of  
THE A & W ROOT BEER  
STAND

"Take Some Home"

Bay Minette, Alabama



**COMMUNITY BUILDERS**  
T. W. MITCHELL

J. C. NALL

MITCHELL & NALL, INC.

General Contractors

P.O. Box 344

Telephone 4224

Bay Minette, Alabama

**COX AND McGOWAN**

SHOE STORE

Footwear Headquarters

Star Brand - Rand

Bay Minette, Alabama

**BRISTOW'S**

DRUG STORE

Prescription Druggist

Duncan Miller Crystal

Haviland China

Bay Minette, Alabama

## BARRON

DRUG STORE

Your Walgreen Agency

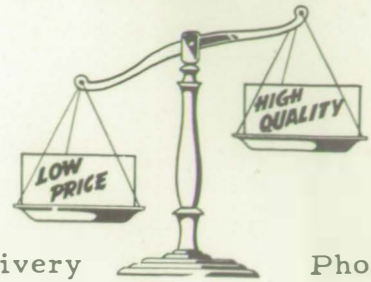
"We Are Careful Druggists"

Phone 2821

Bay Minette

## H. B. CORBETT'S

STORE



Free Delivery

Phone 5831

## CHEVROLET

America's First Choice

for Over 25 Years

# WILSON

CHEVROLET CO.

Court House Square

Bay Minette, Alabama

Dial 2611

Compliments of

W. C. BEEBE

and

F. G. SWEARINGEN

## THE SPORTSMAN'S STORE

Hunting - Fishing - Athletic - Equip.

Motors - Boats - Hobbycraft - Guns

W. R. "PINKY" WILLIAMS

Phone 7778

Bay Minette





Mobile, Alabama

Virginia at Conception St.

Dial HEmlock 3-7465

Name Brands Exclusively



Jarman

Arrow

Swank

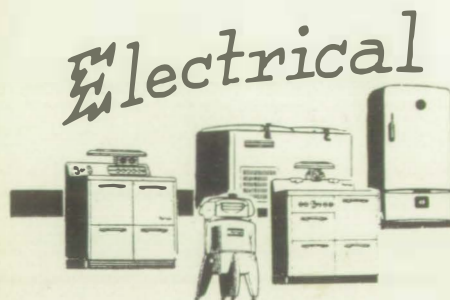
Florsheim

Stetson

Kaynee

Griffon

Tex-Tan



**BALDWIN**  
FURNITURE CO.

**APPLIANCES**

Complete Home Furnishings  
Bay Minette, Alabama

Frigidaire Appliances  
Lane Chest

RCA TV  
Maytag Washers

Famous for Fine Foods  
The World Over

**CONSTANTINE'S**

Mobile's Finest Restaurant

9-11 North Royal St.

Mobile

Compliments of

**MACK'S**

CAFE


"Where Everyone Feels at Home"

Bay Minette

Hy. 31

FERNIANY'S

DAD AND LAD CLOTHIERS

265 Dauphin St. 

Mobile, Ala.

Compliments of

**GAYFERS**

Mobile and Pensacola

**BAY**

**MINETTE**

AUTO PARTS

NAPA

104 East First St.

Bay Minette, Ala.

Day Phone  
7324

Night Phone  
7726

**STUART'S**

CLEANERS

"We Do It Right"

Bay Minette, Alabama

Phone 7146

Compliments  
of

**JONES'**

FEED STORE

Feeds - Seeds - Fertilizers

Telephone 7103

Compliments of

**ANN'S**

BEAUTY SALON



*Bay Minette*

FLOWER SHOP

"Flowers For All Occasions"



## BRADLEY'S

HARDWARE

Hardware - Building Supplies - Paints

Guns and Fishing Tackle

Bay Minette, Alabama

Phone 7180

---



*Super Service*  
*at*

## *Beasley's*

Our Twenty-first Year in a

Progressive City

Bay Minette, Alabama

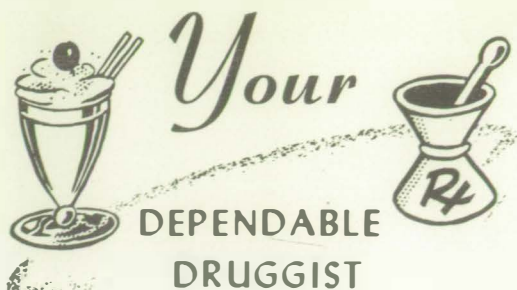
---

## J. E. STILL

MOTOR COMPANY

"See Your Ford Dealer First"

Bay Minette, Alabama



## **LAMBERT'S**

**DRUG STORE**

"Where Everybody Feels  
at Home"

Phone 3841

Bay Minette, Alabama

Compliments of

*Thelma's*

**BEAUTY SHOP**

Merle  
Norman  
Cosmetics

Figurama  
Slenderizing  
Salon

Compliments  
of

**WBCA**

Serving

"Wonderful Baldwin  
County, Alabama"



Compliments  
of

**J. B. BLACKBURN**



IS OUR  
FIRST  
THOUGHT

## **S. KAHALLEY'S**

Quality - Service - Courtesy  
Clothing and Shoes for the  
Entire Family

Phone 4982

Bay Minette, Ala.

## **NOONAN'S**

**GULF SERVICE**

GEORGE "BOOTSIE" NOONAN

Phone 7261





**METZGER'S**

"Mobile's Accepted Style

Center for Men"

Mobile

Prichard

Coaches Jennings, Wyatt and Benson

Feed Their Away-From-Home

Tiger Teams

at

**SPANISH  
FORT**

Why Don't You

Private Dining Room for

Banquets Up to 50 Guests

Famous for Fine Foods

Refreshing remembrance

AUTOGRAPHS




Machinery  
Contractor's Equipment

**TURNER**  
SUPPLY CO.

250 North Royal Street  
Mobile, Alabama

Industrial and Electrical Supplies  
Steel Products

---

**MALONE**

PONTIAC MOTORS



Friendly Courteous Sales and Service

GMC-Pontiac



SALES  
AND  
SERVICE

Robertsdale - WI-7-2532

Bay Minette-6461

---

**BUILDERS**

HARDWARE & SUPPLY COMPANY

Hardware and Building Supplies

Everything for Farm and Home

Bay Minette, Alabama

---

Compliments of

**RADCLIFF**

GRAVEL COMPANY, INC.

Ready-Mix Concrete

Radmix Asphalt

Sand - Gravel - Shells -- Mortar

Radstone Block

Phone HE 3-5585

P.O. Box 108

Mobile, Alabama



Kodak Supplies

**WOJOHNS**

16 So. Conception  
Mobile

Developing, Printing,  
and Enlarging

Compliments of

**THE  
FABRIC  
MART**

MOBILE

Compliments of

**RALPH'S**

FAMILY SHOE STORE

105 Dauphin St.  
Mobile, Alabama

Agent:  
Mayflower Nation-Wide Moving  
Service

**ABB'S**

MOVING SERVICE

Moving - Storage - Packing  
Crating  
50 N. Water St. HE 3-1655  
Mobile, Ala.  
ABB WOOLDRIDGE, JR.

**BIDGOOD**

STATIONERY COMPANY

"Everything for Your Office"  
School - Engineering  
Drafting Supplies  
Blue Prints - Photostats

67 St. Francis St.  
Phone HE 2-0518  
Mobile, Alabama

Compliments of

THE

**SEA  
RANCH**

Mobile Causeway

For All Graduation Gifts  
Shop at

GERHARDT'S

Nationally Known Gifts and Luggage  
Since 1913  
Free 23-Karat Gold  
Monogramming

27 South Royal St. Mobile  
65 North Wilson Ave. Prichard

Compliments of

**HARDY'S  
RESTAURANT**

"Fine Foods for the Family"

Bay Minette

**THOSS**  
SPORTING GOODS

Mobile's Oldest Sporting Goods Store  
Over 70 Years in Business  
MacGregor and Rawlings Athletic Equipment  
Spot Built Shoes

76 Dauphin St.

HE 2-5624

Compliments of

THE

**WESTERN AUTO**

ASSOCIATE STORE

Bay Minette, Ala.

Compliments of

*Norman  
Brown*

CLOTHIERS-

237 Dauphin St.

Mobile

**AZEALIA BRAND**

"Best in the Land"

Ice Cream, Grade "A" Pasteurized and

Homogenized Milk

Delivered to Your Favorite Grocer Daily

*Fairhope*

ICE & CREAMERY CO.

Fairhope, Alabama

Serving the Public Since 1908



Whatever Your Needs - Automotive Wise

Depend on Hadley's

Sales - Service

Dodge - Plymouth

Chrysler

# **HADLEY MOTOR CO.**

Dodge "Job-Rated" Trucks



See "Science Fiction Theatre" Every Sunday 6:30 Channel 3

"Casey Jones" Every Wednesday 6:30 Channel 5

Compliments of

*Mrs. Alice J. Duck*

Compliments of

**LIVE  
OAK**

LODGE

Stockton, Alabama

**RAY  
E.  
LOPER**

LUMBER CO.

Yellow Pine Lumber and Poles Co.

Bay Minette, Alabama

Compliments  
of

STEVENSON  
&  
MOTHERSHEAD



Gulf Oil Corporation Products

Compliments of

**OLEN'S**

DEPARTMENT STORE

Bay Minette, Ala.

New - Used Cars  
Complete Radiator Service  
Authorized Willys (Jeep) Dealer

**CLYDE  
LITTLE**

MOTORS

Phone 7612  
Bay Minette, Alabama  
Pure Oil Products

Anytime

Anywhere

Call

**BEN'S  
TAXI**

Dependable Service  
Reasonable Rates

Phone 9102 or 5432



*latest fashions*



Ladies'  
and  
Children's  
Clothes  
Our Specialty

**THE  
SMART  
SHOP**

Phone 4211

Bay Minette

Diamonds - Watches - Jewelry

**Barton**

JEWELRY CO.

City Hotel Bldg.

Phone 5822

Bay Minette

**SERVICE**

DRY CLEANERS

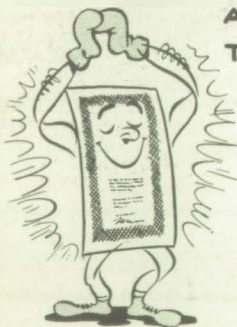
Your "Sta-Nu" Dealer

Pick Up and Delivery Service

Phone 7361

**BEST POLICY**

AT ALL  
TIMES



**BELL**

INSURANCE AGENCY  
and Real Estate  
Insure With Us  
We Give Service  
209 East First Street  
Bay Minette, Alabama  
Phone 7236

Compliments  
of

ENGLISH FASHION TAILORS

E. D. FERNIANY, Owner

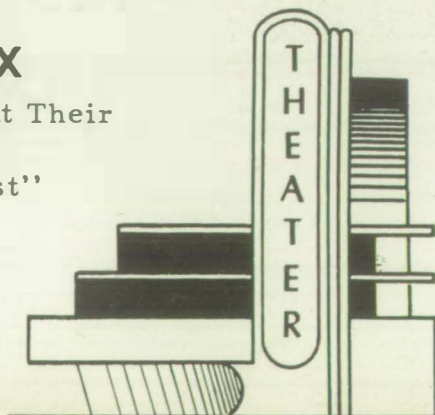
255 Dauphin St.

Mobile, Ala.

**REX**

"Movies at Their  
Best"

Phone  
7440



When You're in Mobile  
Shop at

HAMMEL'S  
and  
HAMMEL'S ADAM GLASS

Store for Homes

Royal Street - Dauphin Street  
Conti Street

PEOPLE  
LIKE TO BANK AT  
**BALDWIN COUNTY  
BANK**

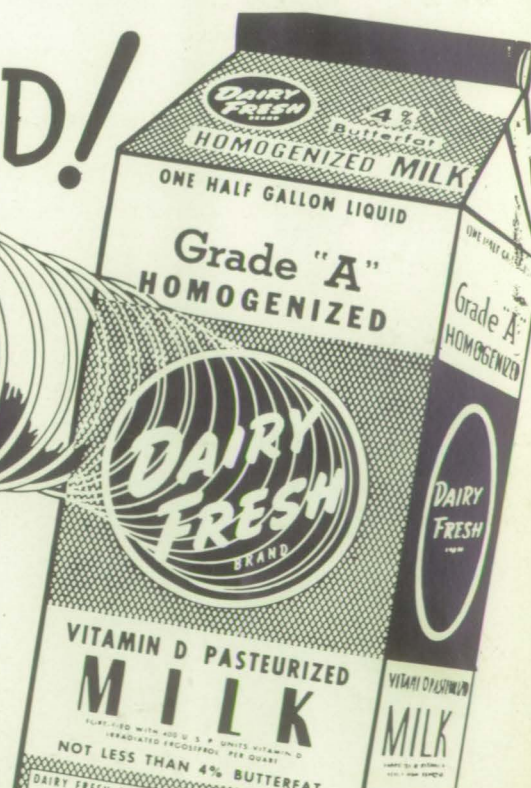


Bay Minette, Alabama

**BEST MILK IN THE LAND!**



*Yours for POUR-fection!*



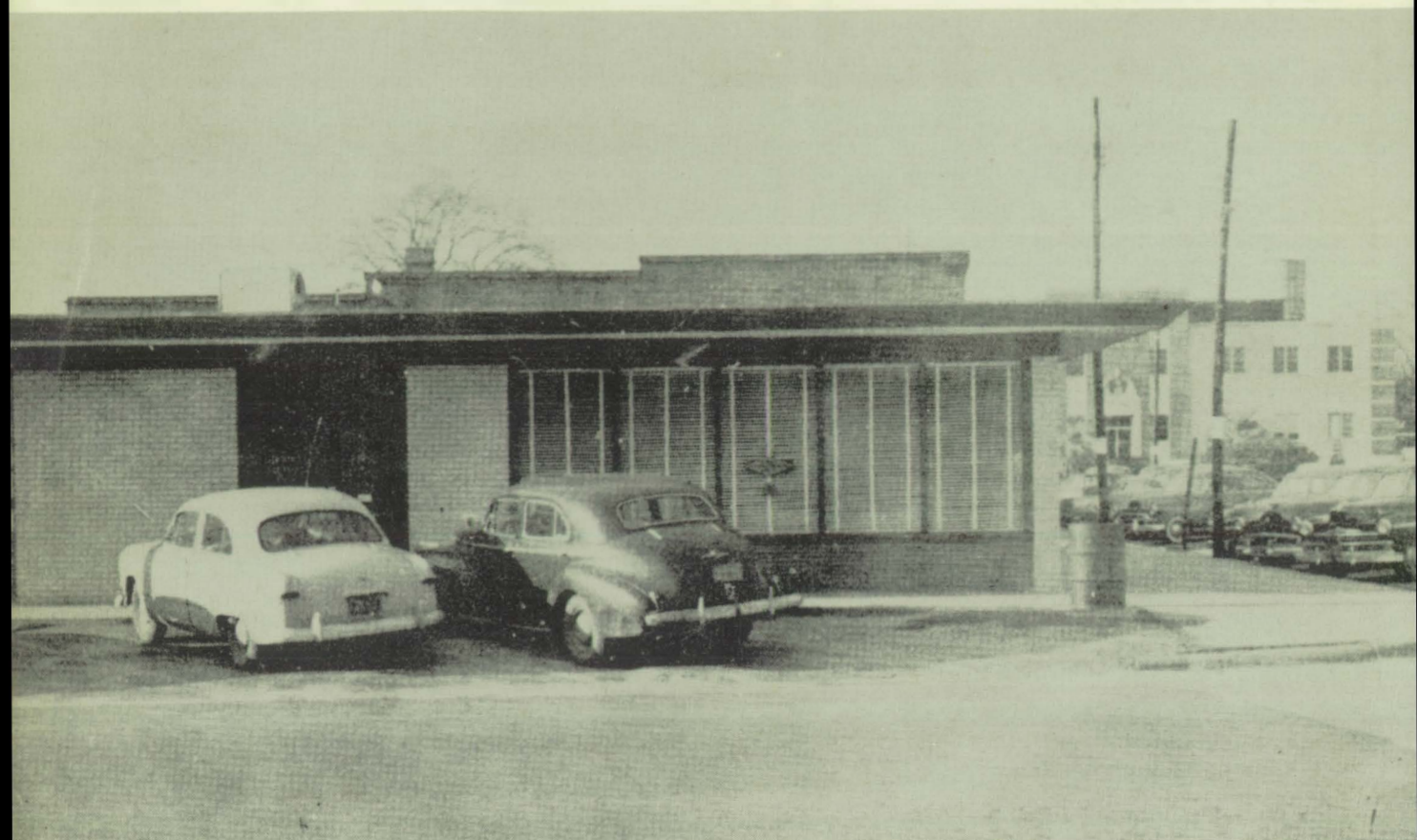
Ice Cream  
Mobile, Alabama



FIRST NATIONAL BANK OF BAY MINETTE

Baldwin's "First" National Bank

Member of FDIC



Compliments of

*Bacon McMillan*

VENEER MANUFACTURING COMPANY

Stockton, Alabama

Compliments of

## CABANISS BROS.

SERVICE STATION

Standard Oil Products

Phone 9115

Bay Minette

## THRASHER

FUNERAL HOME  
AND  
FLOWER SHOP

Ambulance Service

Phone 5831

Bay Minette, Alabama

Bread With a Bonus



Energy

Plus

Nutrition

SMITH'S BAKERY

Quality and Purity  
for Over 50 Years

Compliments of

JOHN CHASON

AND

NORBORNE C. STONE

### Seniors in Their Younger Days

D. Corley  
F. Powell

L. Catrett  
P. Presley

M. Eddins  
F. Prestwood

J. Friel  
F. Richerson

D. Gainer  
J. Skinner

J. Lambert  
H. Smith











