



# THE BALCOALA 1956





John E. Chason  
Allan Crane  
Bobby Taylor  
Floyd Jackson  
Herman Faulkner  
James A. Weekly  
Janice King  
Barbara Lynn  
Kenneth W. Wills  
Ben Wilson  
W. W. W. W.  
James A.  
Nancy Durant  
Vivian  
Ray Crane  
Elizabeth  
Charles  
Laura J. Hamilton  
Margaret Holmes  
Barley Ridge  
Pauline Cubankes  
Claine Smith  
John W. Wiggins  
Johnny McTill  
Paul  
W. W. W. W.  
Eugene  
Jerry Max Ba  
Hope

Clyde Wilson  
Sarah Allen  
Billy Joe  
Tommy  
David  
Donna Newton





Faye Stewart  
Myrtle Willis  
Landy  
and  
son

Sarah Allen

Barbara  
Harwood

Jo-Ann Hadley  
Barbara West

Jimmie Lee  
Buck

Delores Howell  
Anne Catherine Brammen  
Frances Cooper

Sylvia McVill

Bayars  
Pearl Holman

Myrtle Lee  
Edwards

Elaine Perry  
Dorothy Lee

Sylvia Massey

Emily Waldron  
Joseph N. Jay

Willie Miller

Wingfield  
Buckley

Mattie Jean  
Stickland

Charlie Aylin  
Billy Walker

Louise Johnson

Jimmy Bonell  
Shirley White

Chubby Strong

Jimmy Bonell  
Shirley White

John Baggett

Mildred  
Shonley

Moonyne  
Starkley

Harvey  
Horne

Emmett Hall

Harvey  
Horne

Elma Chastang

Harvey  
Horne

Elma Chastang

Harvey  
Horne

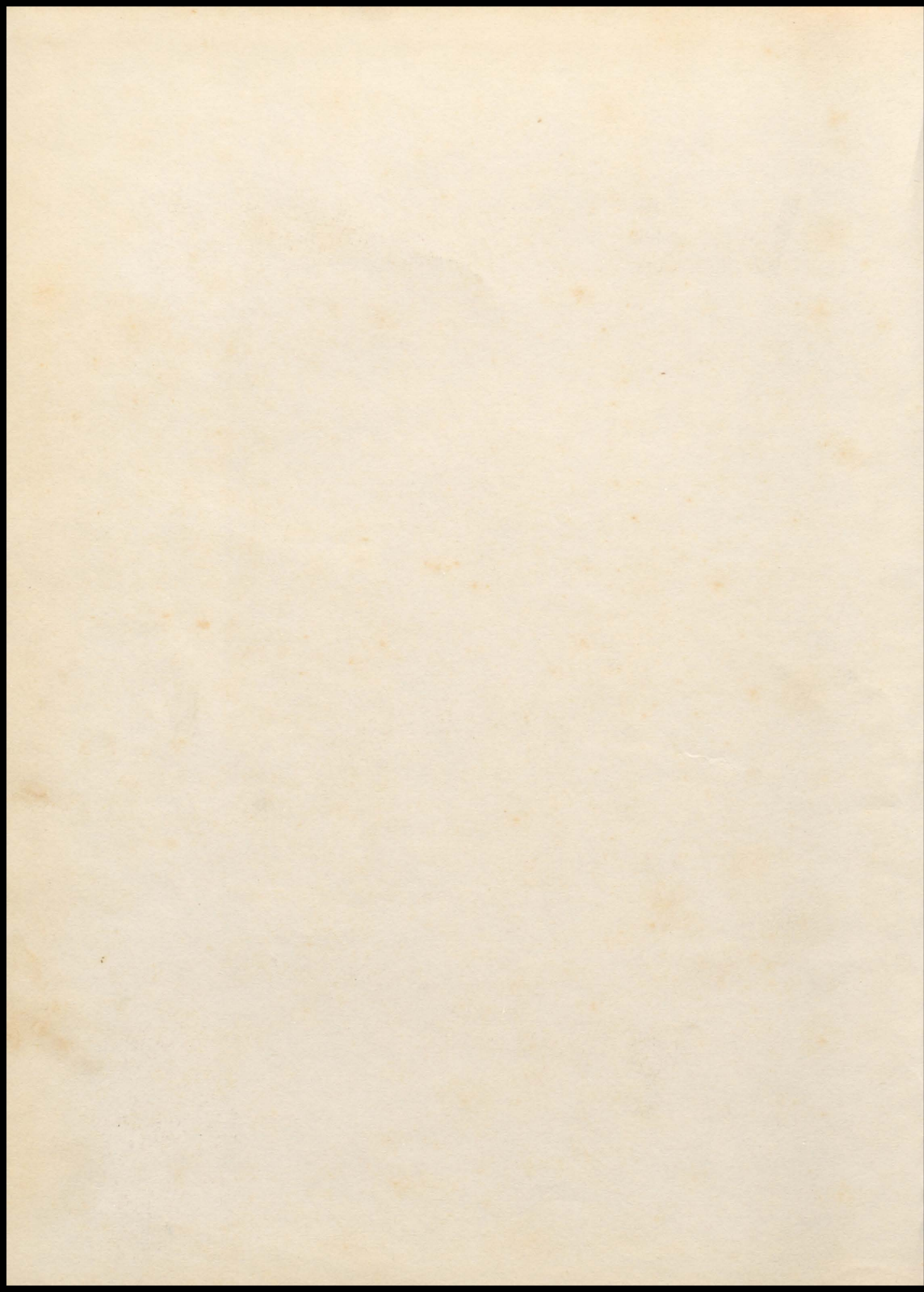
Elma Chastang

Harvey  
Horne

Elma Chastang

Anne Reid







**WE PRESENT**

*The*

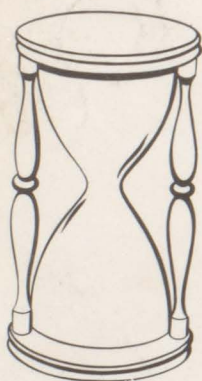
**1956**

*Balcoala*





# The Bal





# coala

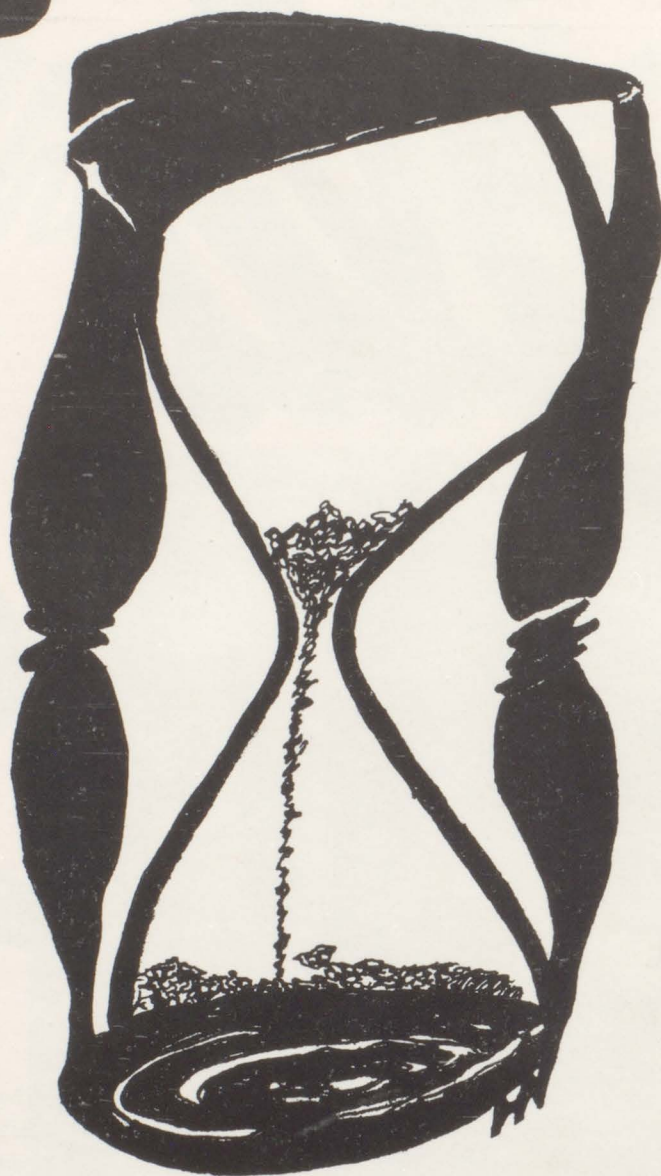
# 1956

Published by SENIOR CLASS  
BALDWIN COUNTY HIGH SCHOOL  
Bay Minette, Alabama

CHARLIE AYLIN  
Editor-in-Chief







"Lives of great men all remind us  
We can make our lives sublime,  
And, departing, leave behind us  
Footprints on the sands of time."

-Henry Wadsworth Longfellow



# THE 34TH. EDITION OF THE BALCOALA

|  |                                |    |
|--|--------------------------------|----|
| P<br>R<br>E<br>S<br>E<br>N<br>T<br>I<br>N<br>G | DEDICATION . . . . .           | 6  |
|  | PRINCIPAL'S MESSAGE . . . . .  | 7  |
|  | SUPERINTENDENT'S MESSAGE . . . | 8  |
|  | FACULTY . . . . .              | 9  |
|  | STUDENTS . . . . .             | 19 |
|  | FAVORITES . . . . .            | 49 |
|  | ACTIVITIES . . . . .           | 59 |
|  | ATHLETICS . . . . .            | 91 |
| ADVERTISEMENTS . . . . .                       | 105                            |    |

## GLIMPSES OF B.C.H.S.

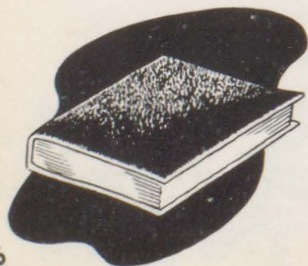






## *Dedication*

We humbly dedicate this annual to Mrs. Stough whose friendly personality and sincere interest in all students has endeared her to us. As our librarian, her work has been an example of service devoted to making our school a happier and more enlightened one. She has never failed us when we needed her. It is with love and appreciation we make this dedication.





# PRINCIPAL'S MESSAGE



We, of the faculty, hope that the graduates of this school will use the things learned in the days spent here, combined with knowledge gleaned from home, church, and community to the best advantage. You have been a good class and many of you should continue your education. BEST OF LUCK, SENIORS!

C. V. DANIELS, Principal



# SUPERINTENDENT'S MESSAGE



Dear Baldwin County High School Seniors:

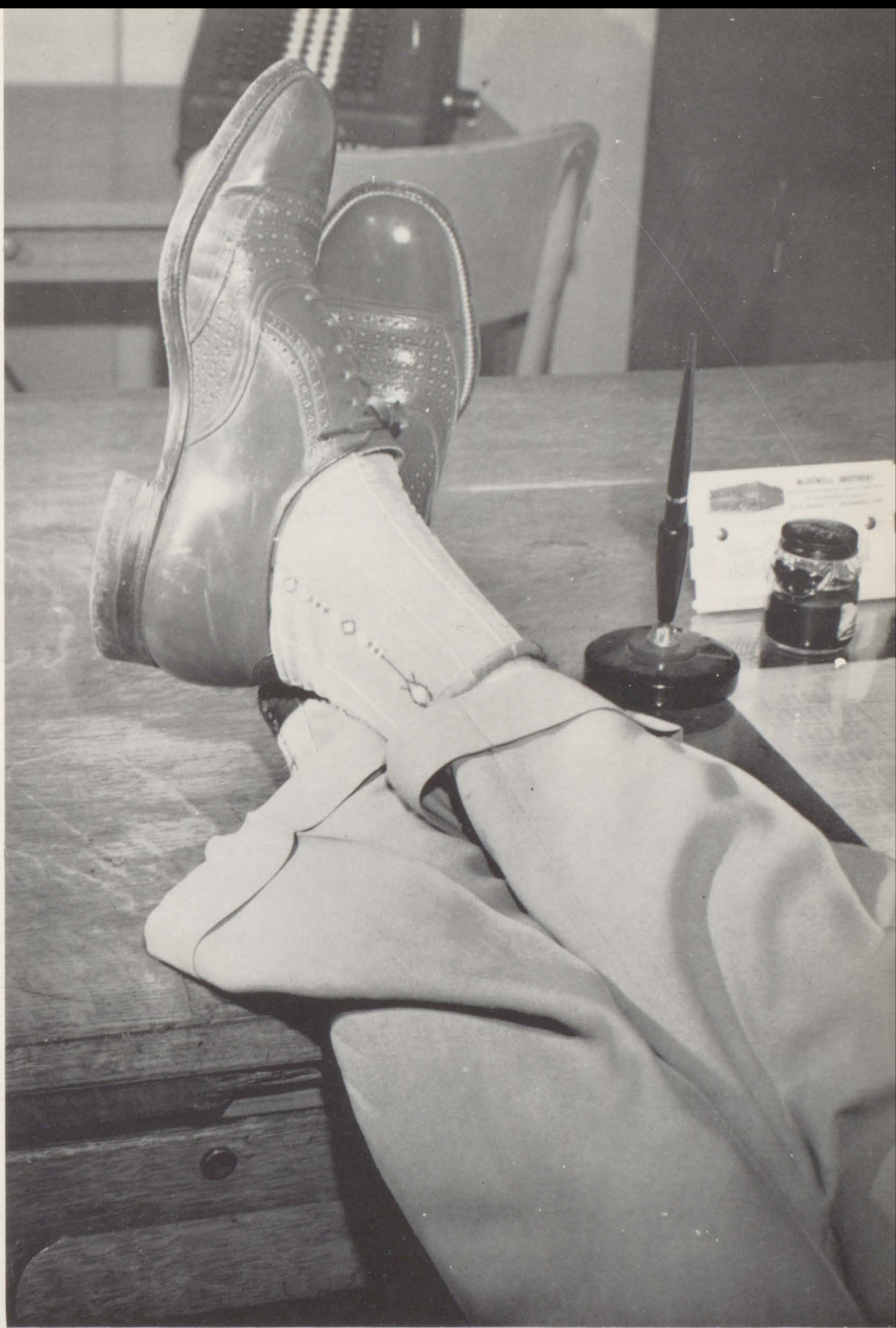
I wish to take this opportunity to congratulate you on your achievements. Your graduation from high school represents twelve years of hard work along with the encouragement and good wishes of your parents, teachers, and other friends.

You have now reached another milestone in your preparation for life and we hope that many of you will continue your formal education. However, I would like to remind you that education is not a destination, but is a journey along a friendly road.

I wish you well.

Sincerely,  
W. Candler McGowan  
Superintendent





*Faculty*





C. V. DANIELS  
Livingston State Teachers College, B. S.  
University of Alabama, M. A.

First row: ALFORD, HENRY FORD - Southeastern Louisiana College, B.M.C. BENNETT, AMELIA - Brenau College, University of Alabama. BOLON, CLARA - Alabama College, B.S. BOWERS, WILEY - Jacksonville State Teachers College, B.S., University of Alabama, M.A. BUSBEE, THELMA - Huntingdon College, A.B. COCHRAN, SUE - Mississippi State Teachers College for Women, B.S.

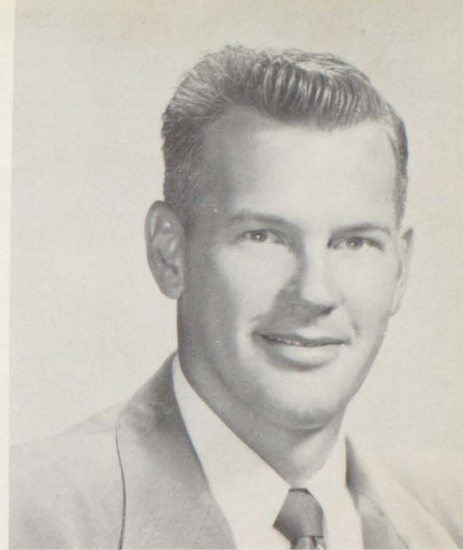
Second row: ECHOLS, C. F. - Howard College, B.S., University of Alabama, M.A. GRANT, GAYNELL - Alabama Polytechnic Institute, B.S. HODGSON, DORIS - Alabama Polytechnic Institute, B.S. HOOPER, GWENDOLYN - Mississippi Southern College, B.M.E. JONES, ADOLPHUS - Alabama Polytechnic Institute, B.S. LANCASTER, MARY ANN - Mississippi Southern College, B.S.







WILLIAMS, W. R. - Columbia University; Mississippi College; Livingston State Teachers College, B.S.; George Peabody College, M.A.



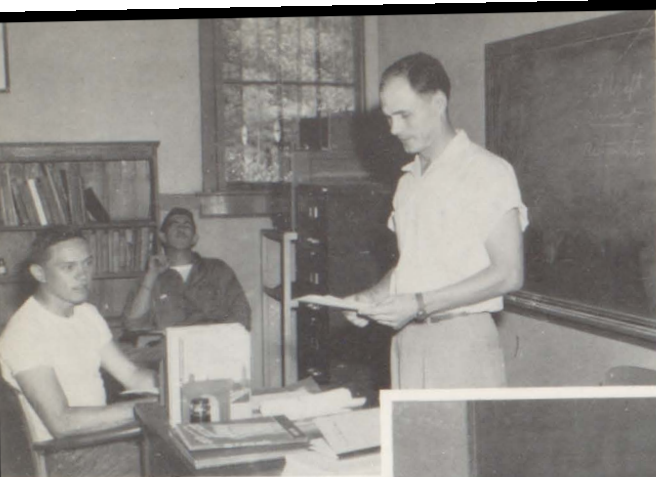
JENNINGS, J. H. - Mississippi College, B.A.; - Mississippi Southern, M.A.

First row: LILES, OWEN - Livingston State Teachers College, B.S., University of Alabama, M.A. MATTHEWS, MARJORIE - Daphne Normal School, University of Chicago. McDUFFIE, ELLISON - Troy State Teachers College, B.A. McKINNEY, PAUL - Emory University, A.B. MILAM, BESSIE - Livingston State Teachers College, B.S. NALL, BYRON - Alabama Polytechnic Institute, M.A. NEALEY, WILFORD - Livingston State Teachers College, B.S.

Second row: NEALEY, MARJORIE - Office Secretary. NOONAN, JULIA - Alabama College, A.B. OWENS, ANNE - Stephens College, University of Georgia, A.B. SMITH, ELLA MAE - Huntingdon College, A.B. STOUGH, MARY ALLEN - Alabama College, A.B., University of Alabama. WEST, RUTH - Huntingdon College, A.B., University of Texas, M. Ed. ZEHNER, INEZ - Alabama College. Not shown: LEONARD, LILLIAN - University of Alabama, B.S., M.S. McDUFFIE, LOUISE - Troy State Teachers College, B.S.







McDUFFIE



BENNETT



McKINNEY



# ENGLISH



SMITH



WEST



McDUFFIE







ZEHNER



STRINGER



LEONARD

# SOIENCE



LANCASTER







MILAM



OWENS



NOONAN



# MATHMATICKEES



MATTHEWS



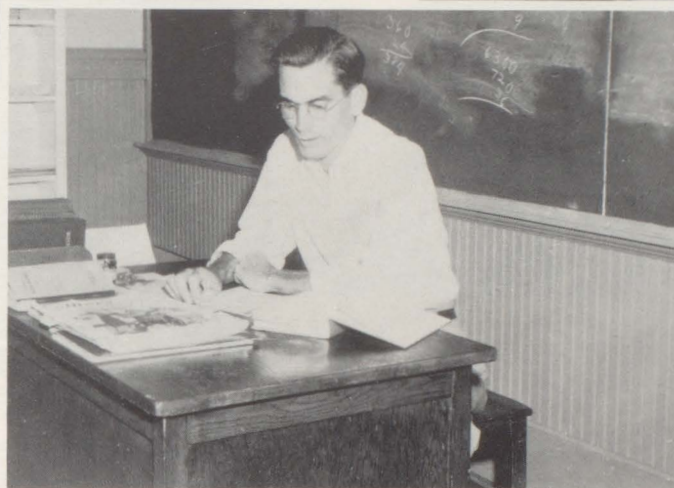




BUSBEE



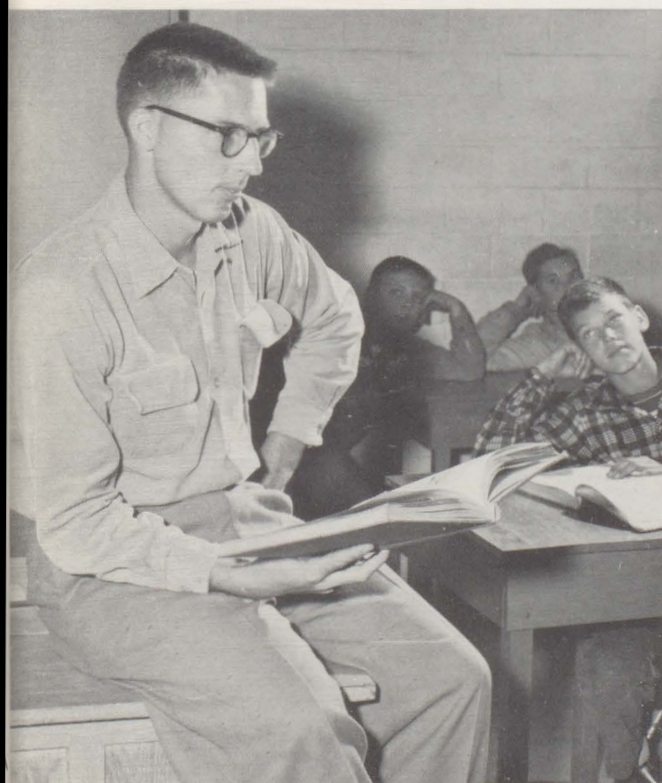
BOWERS



ECHOLS



# SOSIAL STUDIES

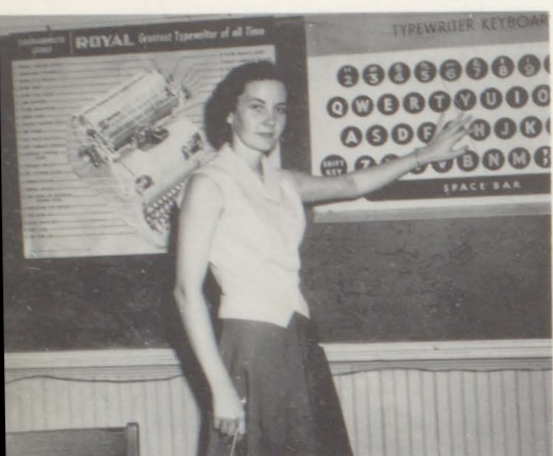


LILES

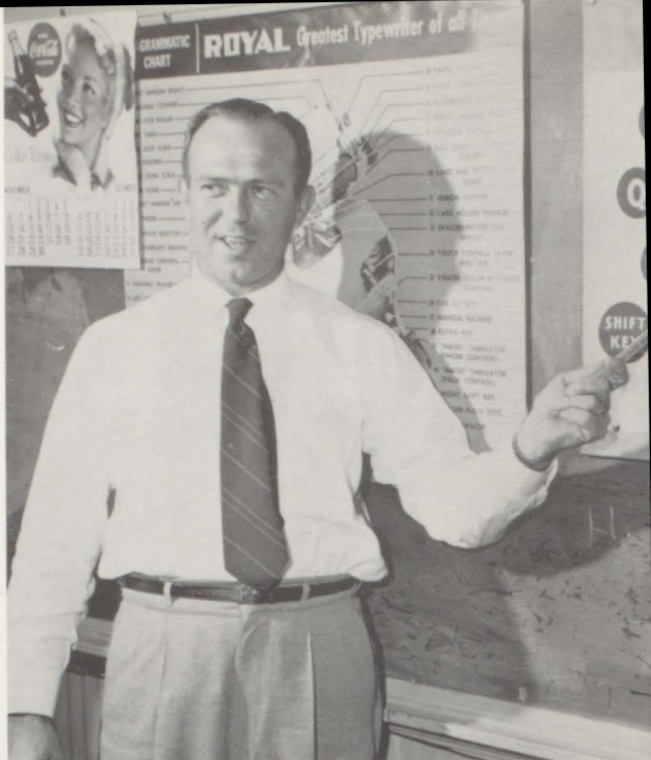


BOLON





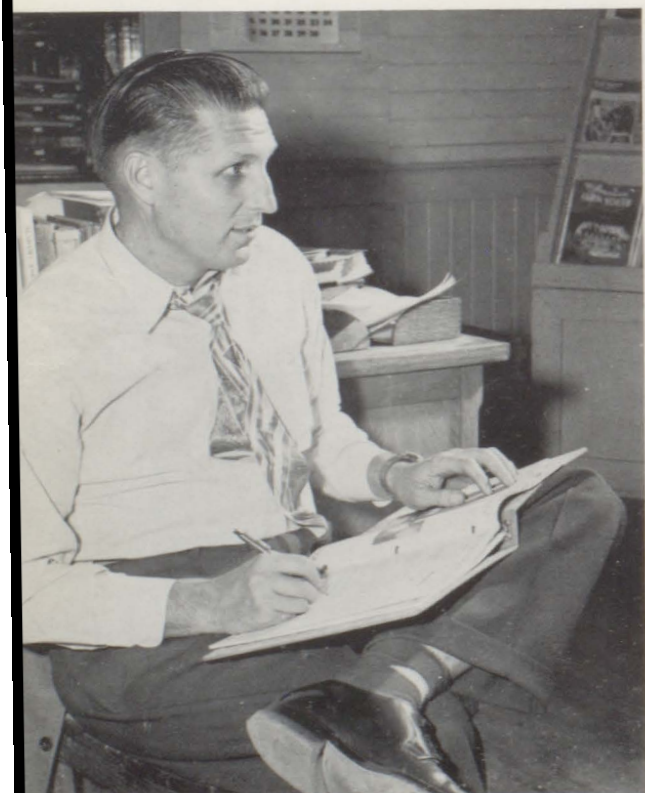
GRANT



NEALEY



# VOKATIONAL



NALL



HODGSON





ALFORD



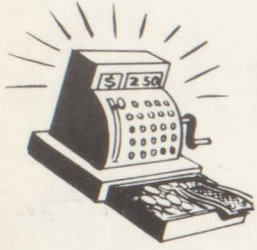
# MUSICK



HOOPER

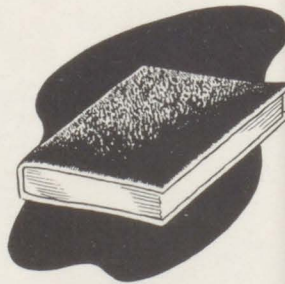






NEALEY

## SERVIZES



STOUGH





*Classes*





# Seniors

## CLASS OFFICERS

JOHNNY CHASON - - - - - President  
 MONK ROBINSON - - - - - Vice President  
 BEN WILLIS - - - - - Treasurer  
 MARGARET HOLMES - - - - - Secretary (Not shown)

SARAH ALLEN - FHA '54, '55, '56; Lunchroom Worker '56.

CHARLES AYLIN - Beta Club '54, '55, '56, Treasurer '55, President '56, County Beta Association President '56; Key Club '54, '55, '56, Director '54, '55, '56; Band '53, '54, '55; Band Club '54, Vice President '54; Glee Club '53, '54; A Cappella Choir '54; Dramatics '56; Annual Staff '55, '56, Assistant Business Manager '55, Editor-in-Chief '56; Secretary-Treasurer Alabama District Key Clubs '56.

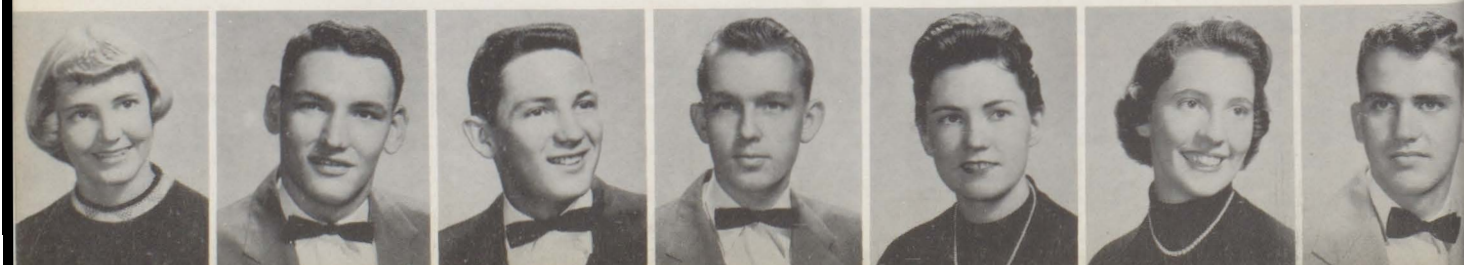
JERRY MAX BARNES - Beta Club '54, '55, '56, State President '56; Key Club '54, '55, '56, Secretary-Treasurer Alabama District Key Clubs '55, International Trustee '56; Band '53, '54; Glee Club '53, '54; Baseball '55, '56; Football '55; "B" Club '56; Dramatics '56; Senior I President; Senior II President; Bal-Co - Co-Editor '56.

JOHN BAGGETTE

GLORIA BELL - FHA '54, '55; Dramatics '56.

ANNA CATHERINE BRANNAN - Science Club '54, '55, '56; F.T.A. '56; Camera Club '54, '55, '56, Secretary '55; Music Club '53, '54, '55, '56, Reporter '56; Band Club '53, '54, '55; Glee Club '53, '54.

MURRAY BRYANT, JR. - Beta Club '54, '55, '56; Football '54; Key Club '54, '55, '56.







JAMES BRYARS

JIMMY LOU BUCK - FHA '54, '55; Library Club '54.

PATSY CATRETT - FTA '55, '56, President '56; Camera Club '55, '56; Music Club '56; Band '53, '54, '55; Band Club '54, '55; Glee Club '53, '54, '55.

JOHNNY CHASON - Beta Club '54, '55, '56; Baldwin County Association, Treasurer '56; Key Club '54, '55, '56, Secretary-Treasurer '56; "B" Club '56; Senior III President '56; Football '53, '54, '55, '56; Student Council '54, '55.

ELMA CHASTANG - Glee Club '54; Library Club '54; D.O. Club '56.

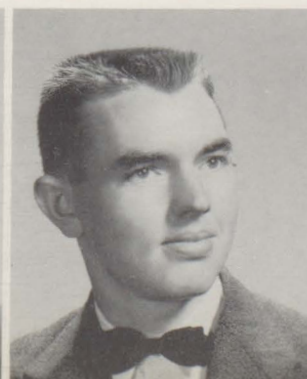
FRANCES COOPER - FHA '55; Glee Club '56.

ALBERT CRANE - FFA '54; D.O. Club '56, President '56.

RAY CRANE - Glee Club '53; Baseball '53; Basketball '53; Student Council '53.

DORIS DAY - Science Club '54, '55, '56, Treasurer '55, '56; FTA '56; Band '55; Glee Club '54; Dramatics '56.

INEZ DURANT







MILDRED DURANT - FHA '54, '55, '56; Camera '55, '56.

NANCY DURANT - Beta Club '54, '55; Camera Club '54, '55; Glee Club '53, '54; Library Club '53, '54; D. O. Club '56.

MYRTLE LOU EDDINS - Beta Club '54, '55, '56; Science Club '55, '56; Camera Club '54, '55, '56, Vice President '55, President '56; Music Club '54; Band '53, '54, '55, '56; Band Club '53, '54, '55, Secretary '55; Glee Club '53, '54; Library Club '53, '54, Secretary '54; Student Council '53; FTA '56.

CAROLYN EUBANKS - Beta Club '55, '56; FTA '56, Historian '56; Glee Club '54; Library Club '53; Future Nurses Club '56.

MIKE EUBANKS

PAULINE EUBANKS - FHA '54, '55; Camera Club '55, '56; Glee Club '53, '54, '55; Dramatics '56, Secretary '56; Future Nurses Club '56; A Cappella Choir '55; Library Club '53.

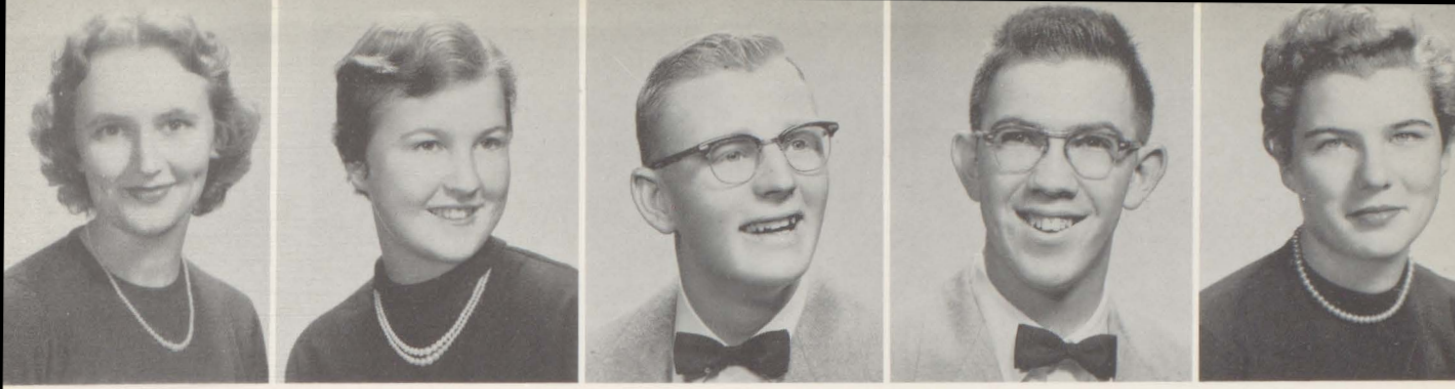
JIMMY FAULKNER - Key Club '56; Dramatics '56; Balco '56, Co-Editor '56.

NANCY FRIEL - Beta Club '53, '54, '55, '56; Science Club '55, '56; Camera Club '55; Music Club '53, '54, '55, '56, Secretary '55; Band '53, '54, '55; Band Club '53, '54, '55; A Cappella Choir '53, '54; Glee Club '53, '54; Cheerleader '56; "B" Club '56; Balco '56, Assistant Editor '56; Annual Staff '56; Girls' State '55.

BETTY GODWIN - FHA '54.

PEARL GODWIN - Beta Club '54, '55, '56; FTA '55, '56, Secretary '56; FHA '54, '55, '56, Song Leader '55, Corresponding Secretary '56; Music Club '53, '54, '55, '56, Vice President '55, President '56; Glee Club '54, '56; A Cappella Choir '56; Dramatics '56; Future Homemaker B.C.H.S. '56.





LOTTIE GRAHAM - FTA '55, '56; FHA '54, '55, '56; Glee Club '53, '54.

JO ANN HADLEY - FHA '53, '54, '55, '56.

BILL HALL - Baseball '54, '55, '56.

EMMETT HALL - Key Club '54, '55, '56; Baseball '55, '56.

LAURA HAMILTON - FHA '53, '54, '55, Parliamentarian '55; Camera Club '56; Glee Club '53, '54, '55; Basketball '54, '55; Dramatics '56; Student Council '56; Bayettes '56; Future Nurses '56.

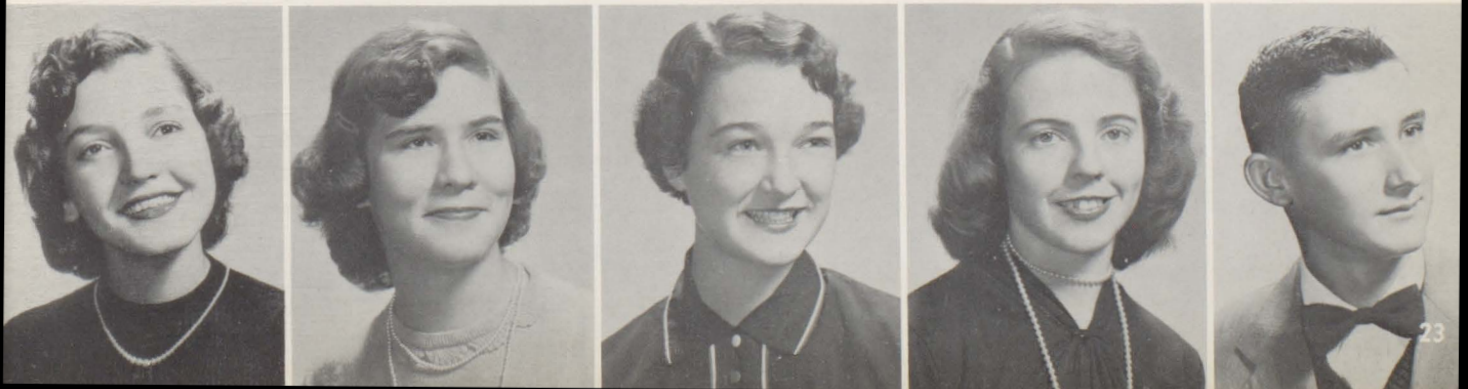
BARBARA HARWOOD - Beta Club '54, '55, '56; FTA '54, '55, '56; FHA '54, '55, Vice President '55; Band '55; Student Council '54; Balco '56; Good Citizenship Girl '56.

EUNICE HAYLES - Beta Club '54, '55, '56; FHA '54, '55, '56.

MARGARET HOLMES - Beta Club '54, '55, '56; Science Club '54, '55, '56, Recording Secretary '55, State Vice President '55, President '56; Band '54; Band Club '54; Cheerleader '55, '56; "B" Club '56; Senior III Secretary; Senior II Vice President; Senior I Secretary-Treasurer; Student Council '56, Vice President '56; D.O. Club '56, Vice President '56.

DELORES HOWELL

NORBORNE IRWIN - FFA '53, '54, '55.







FLOYD JACKSON - Beta Club '53, '54; FFA '53, '54; Key Clicks Klan '56.

VIRGINIA JAYE - FTA '56; FHA '54, '55; Spanish Club '55, '56; Secretary '56.

MARY JENKS - Glee Club '56.

LOUISE JOHNSON - D.O. Club, Treasurer '56.

JANICE KING - FHA '54, '55, '56.

ILEEN LEE - FTA '56; FHA '54, '55, '56, Photographer '56; Camera Club '54, '55, '56; Glee Club '53; Band '53, '54, '55; D.O. Club '56; Lunchroom Worker '56.

JIMMY McDILL - Band '54, '55; D.O. Club '56; Top Magazine Salesman '56.

VERMELLE McDILL - Beta Club '54, '55, '56; Science Club '54, '55, '56; Music Club '53, '54, '55, '56, Secretary '56; Band '53, '54, '55, '56; Band Club '54, '55, '56; Glee Club '53, '54; Future Nurses '56, President.

JOHNNY MCGILL - Key Club '56; Football '53, '54, '55, '56; Basketball '54, '55, '56; "B" Club '55, '56.

SYLVIA MCGILL - Beta Club '54, '55, '56; FHA '54, '55, '56; Dramatics '56.





D. C. McKINLEY - Key Club '54, '55, '56; Football '53, '54, '55, '56; Baseball '54, '55, '56; "B" Club '55, '56.

SHIRLEY McKISSACK - Beta Club '54, '55, '56; FHA '54, '55, '56; Camera Club '54; Glee Club '53, '54, '55; A Cappella Choir '54; Bayettes '55; FFA Queen '54; Homecoming Queen '56; Balco Reporter '56.

SYLVIA MOSELEY - Beta Club '53, '54, '55, '56; Music Club '52; Band '52, '53, '54.

HOPE NEELY - Beta Club '54, '55, '56, Recording Secretary '56; Science Club '54, '55, '56, Parliamentarian '54; Music Club '53, '54, '55, '56; Band '54, '55; Glee Club '53, '54; A Cappella Choir '53, '54; Balco '56; Annual Staff '54, '56; Paper Staff '54; Vice President Senior I Class.

ANNETTE NEWTON - FHA '55; Band '55; D.O. Club '56.

MACK PAUL - FFA '53, '54, '55, '56, Treasurer '56; Baseball '54, '55.

ELOISE PEAUVY - D.O. Club '56; Piano '53, '54; FHA '54.

EUGENE PEAUVY - FFA '54, '55.

WAYNE POST - Beta Club '54, '55, '56; Key Club '55, '56; Glee Club '54, '55; A Cappella Choir '54, '55; Football '54, '55, '56.

HENRY POSTMA - Beta Club '56; Key Club '56; Science Club '55, '56, Parliamentarian '56; Glee Club '54; A Cappella Choir '54; Football '54, '55, '56, Captain '56; Basketball '55, '56; "B" Club '56; Member of the Executive Council '56.







CAROLYN PRESTWOOD - Beta Club '54, '55; FTA '56; FHA '54, '55, '56; Historian '55; Camera Club '54; Glee Club '53, '54; Spanish Club '55, '56; Social Chairman '55; President '56; Student Council '53, '54, '56.

ANNE REID - Beta Club '54, '55, '56, Corresponding Secretary '56; FTA '56, County Council President '56; Music Club '53, '54, '55, '56, Treasurer '56; Band '53, '54; Band Club '54, Treasurer '54; Glee Club '53, '54, '56, A Cappella Choir '54; Cheerleader '55; Dramatics '56; Senior II Secretary-Treasurer; Student Council '56; Annual Staff '55, '56, Assistant Literary Editor '55, Literary Editor '56; Miss B.C.H.S.

JUNE RIEBEN - FHA '54, '55, '56; Glee Club '53, '54; Nurses Club '56.

SHIRLEY RICHBURG - Camera Club '56, Reporter '56; Glee Club '53, '54; Library Club '53, '54, '55; Future Nurses Club '56.

GEORGE ROBINSON - Key Club '55, '56; Football '53, '54, '55, '56; "B" Club '54, '56; Senior III Treasurer; Senior II Vice President.

WILODENE ROBINSON - FTA '56; FHA '56; Glee Club '53, '54, Freshman Class Secretary.

VIVIAN SCHRAM - Glee Club '53, '54, '55, '56; A Cappella Choir '55, '56.

BECKY SIMS - Beta Club '54, '55, '56, Secretary '55, Recorder '54; FTA Reporter '54, Band '53; Glee Club '56; Cheerleader '53, '56; "B" Club '56; Dramatics '56; Senior I Vice President; Balco '56; Annual Staff '56.

GENEVA SLAY - FHA '54, '55, '56.

ELAINE SMITH - Future Nurses Club '56, Reporter.





#### FRANK STAMPS

EMORY STEEDLEY - FFA '54, '55; Football '53, '54.

IRMA STEEDLEY - FTA '54, '55, '56, President '56; Camera Club '55, '56.

MOONYENE STOKLEY - Beta Club '54, '55, '56; FTA '56; Camera Club '54, '55; Music Club '53, '54, '55, '56, Treasurer '55; Band '53, '54; Glee Club '53, '54, '56; Cheerleader '55, '56; Head Cheerleader, "B" Club '55, '56; Dramatics '56.

WILLIAM STOUGH - Key Club '54, '55, '56, Vice President '56; Glee Club '54; Football '53, '54, '55, '56; "B" Club '54, '55, '56, Treasurer '56, Dramatics '56; Student Council '56; Annual Staff '56.

FAYE STEWART - Library Club '53, '54; Lunchroom Worker '56.

MATTIE JEAN STRICKLAND - Beta Club '54, '55, '56; FTA '55, '56, Treasurer '55; FHA '54, '55, '56, Treasurer '54, Recording Secretary '55; Glee Club '53, '54; Dramatics '56.

CHRISTINA TAYLOR - FHA '55, '56; Music Club '56; Glee Club '55, '56; A Cappella Choir '55, '56; Dramatics '56.

MILDRED THOMLEY - Beta Club '55, '56; FTA '54, '55, '56.

CECIL TRAWICK - D.O. Club '55, Vice President '55.







BILLY WALKER - Beta Club '54, '55, '56, Treasurer '56; Key Club '55, '56, President '56; Glee Club '54; Dramatics '56; Senior I Vice President; Student Council '55, '56, President '56; Balco '56, Business Manager; Annual Staff '56, Sales Manager.

DOYLE WEEKLEY - Key Club '55, '56; Camera Club '55, '56; Treasurer '56; Basketball '53, '54, '55; Cheerleader '56; "B" Club '56; Dramatics '56; Senior III Executive Committee '56; Mr. B.C.H.S. '56.

JAMES WEEKLEY

EMILY WELDON - Beta Club '54, '55, '56, Secretary Baldwin Beta Association '56; Music Club '56; Glee Club '53, '54, '55; A Cappella Choir '55; Dramatics '56; Senior I Vice President; Balco '56; Corn Derby Queen.

BARBARA WEST - FTA '55, '56, Parliamentarian '56; FHA '54, '55, '56, President '56; Spanish Club '55, '56, Reporter '56; Dramatics '56; Lunchroom Worker '56.

KENNETH WHITE - Key Club '54, '55, '56; Football '54, '55, '56; Basketball '55, '56; Baseball '55; Balco '56, Sports Reporter.

NEIL WHITE - Key Club '53, '54, '55, '56; Camera Club '53; Band '53; Band Club '53; Glee Club '53; Football '55, '56; Student Council '53; A Cappella Choir '53.

SHIRLEY WHITE

LEILA WIGGINS - FHA '53; Glee Club '53, '55, '56; A Cappella Choir '55, '56.

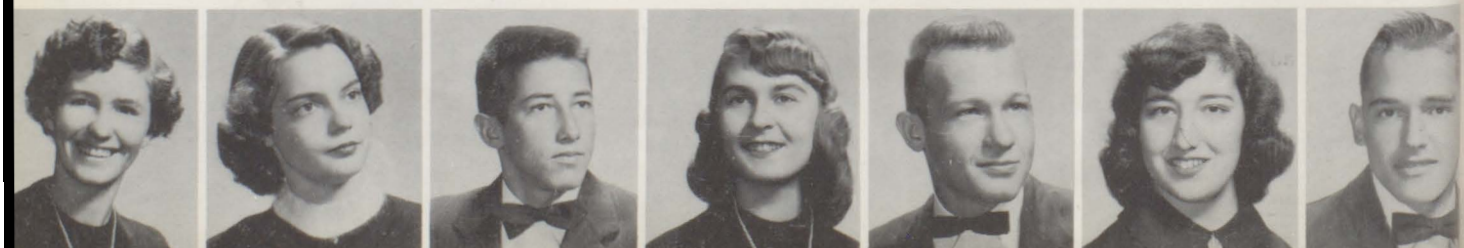
CHARLES WILSON

SARA RICHBURG WILSON - FHA '53; Glee Club '53, '54; D.O. Club '54, '55, '56.

BEN WILLIS - Beta Club '54, '55, '56; Key Club '54, '55, '56; Science Club '54, '55, '56; Football '53, '54, '55, '56; "B" Club '54, '55, '56; Baseball '53, '54, '55, '56; Class Treasurer '56; Boys' State Representative '55.

MYLETO WILLIS - Beta Club '54, '55, '56; Science Club '55, '56; FTA '55, '56; Glee Club '54; Library Club '53; Dramatics '56, Treasurer '56; Balco '56; Lunchroom Worker; Future Nurses Club '56.

FRANK YARBROUGH - Key Club '54, '55, '56; Band '53; Football '54, '55, '56.





A Senior's Backward Look

## *Senior Memories*

How well we remember the past years--the grammar school years when we envied those grown-up "high school kids." Soon we found ourselves in Junior High School. We felt pretty important. We were happy and very confident. We began to take a small part in the school's activities. The year passed quickly and we were

FRESHMEN: "Senior High" at last! We didn't realize though, still happy and confident, that it was only one small step on the ladder of learning. That year, a little jealous of the dances and parties, we instituted our own. The very first "Freshman Frolic," which was a real success. We hope it will be carried on and enjoyed as we enjoyed it. Also, we were a little more prominent in school activities. We were well represented in clubs--Glee Club, band, and athletics. Then all of a sudden--another step--

SOPHOMORES: We kept right on plodding--just as busy as before--taking part in the same organizations and having our own Sophomore Hop, "Silver Bells." Soon we became---

JUNIORS: This was really our high step--not only in our own school, but all over the state and even the country. Our Junior-Senior Prom was one the Seniors will be a long time forgetting. How exciting it was to order our class rings which we thought were the most beautiful ever. Toward the end of the year, members of our class became state presidents and vice presidents, district officers, and an international officer. These were elected for our---

SENIOR YEAR: At last the big step! We began to feel a little important. We received and exchanged our class rings. Our magazine sales was a record success with our grand total of \$3,278.18. Jimmy McDill, our high salesman, also set a record. We leave the Juniors a tough job next year. We looked forward to our Junior-Senior Prom and we weren't disappointed. Then came the day to order our invitations and cards. We then began to realize that our high school days would soon be over. Soon the graduation and class parties started. We ordered our caps and gowns and practiced for Baccalaureate and graduation. Finally the day arrived. Upon receiving our diplomas and hearing the kind words of Mr. Daniels, we thought back over the past years and then realized that this wasn't the last step, but the beginning of a new life as adults.



# Juniors

Seniors, seniors, oh how gay!  
'Tis sad, they'll soon be on their way,  
And then, Oh Juniors, we must choose,  
To work that we might fill their shoes.

Being watchful of this year's Seniors, we plan to try and fill their shoes and hope to need a bigger pair.

The class officers were--President, Ernest Miller; Vice President, Toni Bodden; Secretary-Treasurer, Carolyn Weekley; Dortha Harris, Vice President.

We would like to pay tribute to the fine teachers who, to the best of their abilities, prepared us for living in this changing era. May we strive to set high standards and ideals for the future juniors to follow.

Our President Attracts 'em

Girl in trouble



# Active Juniors

Mama's little helper



Wide awake  
on the job



Happy  
Wanderer

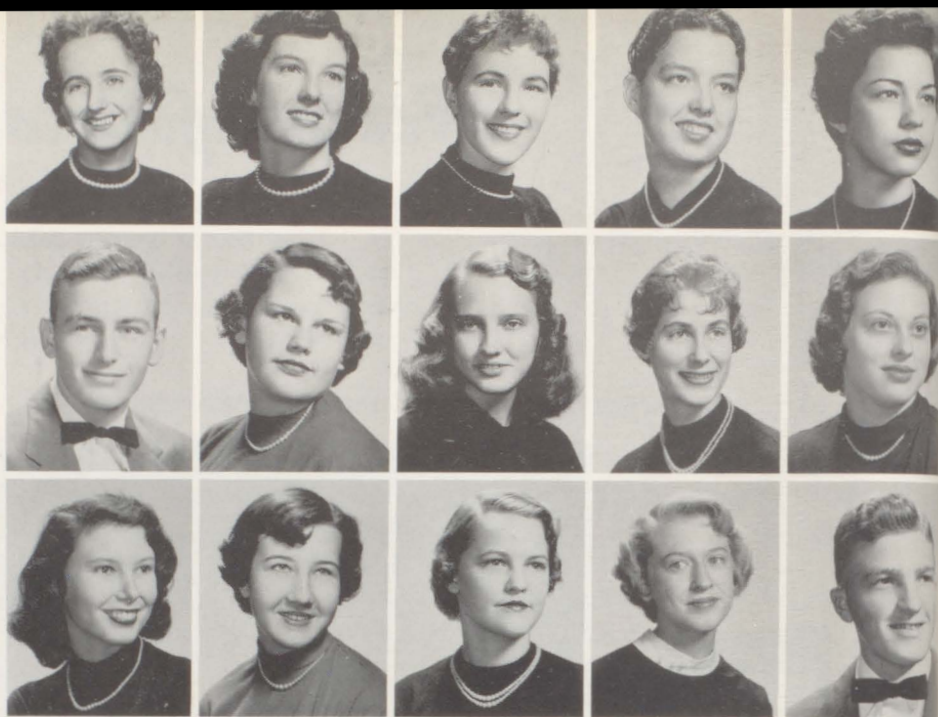




CONNIE ADAIR  
 JANICE ARDIS  
 JANE BALLARD  
 SYBIL BAGGETT  
 PAT BELL

JIMBO BERRY  
 TONI BODDEN  
 EUNICE BOLLING  
 JAYNE BOLON  
 DORIS ANN BROWN

LAVERNE BROWN  
 MARGARET BROUGHTON  
 CLARICE CHAFIN  
 MELBA CHAFIN  
 EARL CHANCELLOR



MARY CLARK  
 BEAULAH COLLINS  
 DANNY COOK  
 JOSEPH COOK  
 JYON CORBETT

GEORGE DAY  
 JOYCE DOWNEY  
 ERMA DEAN DUCK  
 NYLA DUCK  
 WILMA DURANT

ROSLYN DYESS  
 WINFRED GARNER  
 TONY GIBSON  
 JAMES GRAHAM  
 MARY LOU GRIFFIN

SABRA HADLEY  
 WENDELL HALL  
 ROBERT HARRELL  
 HUBERT HARVILLE  
 DOROTHA HARRIS  
 CARROLL HEAD

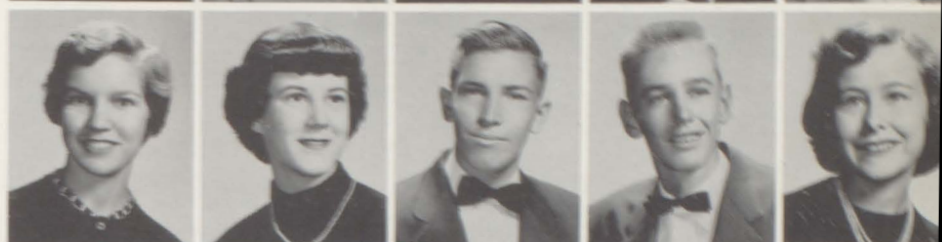




BETTY JO HEATON  
ANN HODGES  
JO ANN HOFFMAN  
SONNY HOLLIDAY  
CHESTER HOUSE



EVELYN HOWELL  
JEAN HUBBARD  
SHERMAN JAMES  
DENNIS JONES  
SUE KILLCREAS



JON KNIGHT  
RUTH LAMBERT  
ERNEST MILLER  
JAMES MOORER  
LILLIAN MOSLEY



WANDA MURPHY  
PATSY McDUFFIE  
CHARLES MCKINLEY  
ROLAND McNEELY  
ANNETTE OWEN



PEGGY PHILLIPS  
WINNIE QUINLEY  
JEAN REID  
GLORIA RIDER  
THOMAS ROBINSON



JIMMY SMITH  
JULIA WALLACE  
YVONNE STEWART  
ADA SUTTON  
CAROL TRAWICK



FRED WASSON  
CAROLYN WEEKLEY  
CLIFTON WHIDBEE  
MARY LOUISE WILLIAMS  
DAN WINDHAM



# Sophomores



Officers: Jack Long, President (not shown); Vice Presidents, Dorthy Nell McDill, Wade Faulkner, Jean Sibley, Louise Jackson.

We're the Sophs, the middle child  
And do we know the ropes?  
As the years pass quickly by,  
May each fulfill his hopes.

This verse expresses the attitude of the sophomore class. Many members joined in on the various organizations and activities.

As always, one of the most important events was the Sophomore Hop. The theme this year was "Winter Wonderland." The beautiful decorations did much to add to the gaiety and helped to make this dance the great success it was.

The sophomores leave this class to become Juniors and we're sure they will continue their creditable work as they take one more step on the way to graduation.

Soph Future Teachers

A Sophomore Beauty?





Decorator?



Decorating for the "Hop"



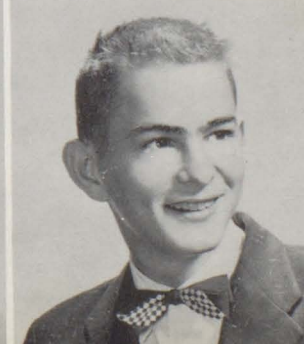
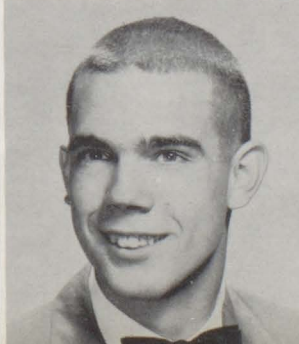
Newton Beasley  
Larry Catrett

Caroline Bray  
David Chesnutt

Lloyd Brown  
Autry Conway

Harry Bryant  
Jerome Cox

Ruth Bryars  
Nobie Kay Cooper





Dorothy Corley  
Brown Crosby  
Geraldine Cruzan  
Joe Crane  
Verla Crawford



Barbara Davis  
Emogene Davison  
Stephen Eddins  
Jackie Eubanks  
Shirley Emanuel



Wade Faulkner  
Jean Friel  
Delores Gainer  
Eleanor Gideons  
Leroy Goins



Carol Ann Hastie  
Tommy Hawkins  
Nelda Hayles  
Daisy Nell Heaton  
Linda Hinote



Wayne Holland  
Edgar Jackson  
Judith Jones  
Esther Killcrease  
Judy Lambert



Abbie Dean Ledkins  
David Lindsey  
Carole Little  
Jack Long  
Olson Long



Paul Lyles  
Sonny Luther  
Mary Ann McCaw  
Dorothy Nell McDill  
Carol Mauldin  
Billy Melton



Charles Money  
Glenda Nance  
Jo Ann Neal  
Louise Overstreet  
Elizabeth Peaden

Dorothy Peterson  
Peggy Phillips  
Fred Powell  
Patricia Presley  
Pat Presley

Faye Prestwood  
Peter Propst  
Glenda Quinn  
Faye Richerson  
Sharon Richerson



Nettye Lou Roberts  
Bill Ruple  
Miriam Russell  
Dorothy Ryan  
Jack Sellars

Billy Scogin  
Jean Sibley  
Cecil Sims  
Judy Skinner  
Pete Slaughter

Harold Smith  
Newman Smith  
Evelyn Stewart  
Glen Stiers  
Kenneth Taylor

Pat Trawick  
Billy Wallace  
Myrna Jean White  
Sonny Wilkins  
Lavelle Williams  
Barbara Wood



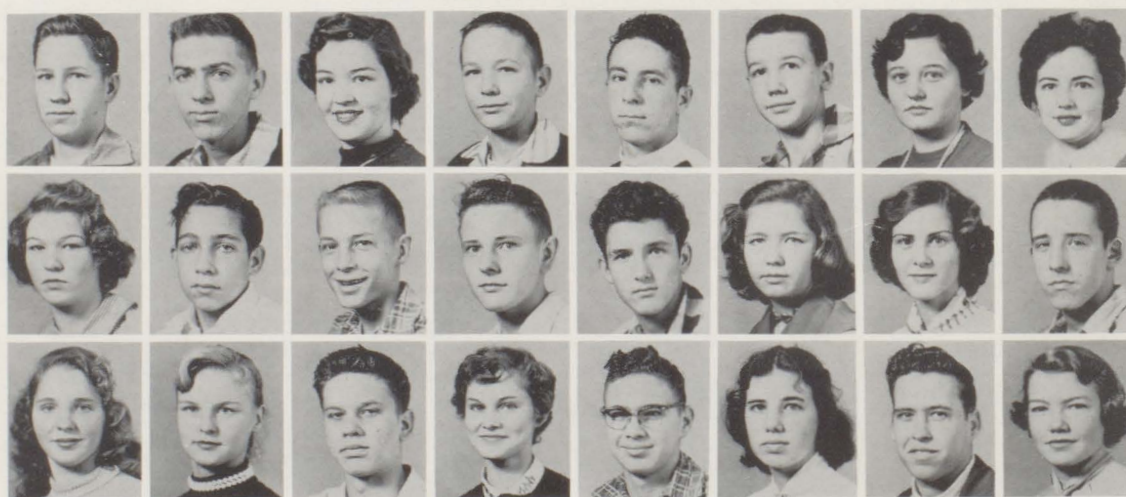
# Freshmen



Presidents, Julia, Joyce, and Eloise



## FRESHMAN FROLIC



A. Allen, R. Anderson, J. Baggett, J. Ballard, P. Bankester, D. Becker, J. Brannan, J. Bristow, M. Broughton, B. Brown, H. Caprara, R. Casperson, G. Cassady, N. Catrett, J. Clark, B. Clemmons, L. Collins, N. Cooper, J. Cowser, A. Cox, N. Davidson, F. Davis, J. Davis, V. Davis.





B. Day, P. Day, C. Dean, R. Dorman, H. Duck, R. Durant, G. Eubanks, F. Femeinear, M. Feulner, H. Fillingim, G. Gilbert, J. Grimes, H. Hadley, J. Hamilton, T. Hammond, J. Hastings, S. Hill, B. Hinote, J. Hodge, L. Hoffman, S. Huggins, P. Jackson, L. Jerkins, R. Jerkins, B. Johnson, C. Johnson, D. King, S. Langham, J. Long, S. Long, S. Martin, A. McPhaul, D. Moseley, V. Mosley, W. Mosley, W. Mosley, A. Nix, B. Owen, P. Page, T. Parker, I. Patterson, B. F. Peavy, C. Perkins, L. Quinley, W. Quinley, R. Rabon, P. Rider, B. Robertson, K. Robinson, D. Rogers, D. Rowland, L. Ryan, H. Scogin, C. Seay, M. Seay, L. Simpson, D. Smith, E. Smith, C. Steele, A. Stewart, L. Stewart, M. Stewart, S. Stewart, K. Taylor, A. Thompson, H. Tillman, R. Tolbert, L. Trawick, J. Trawick, J. Trawick, L. Vines, C. Walker, S. Weatherford, D. Weekley, E. Whidbee, D. White, J. White, P. White, H. Williams, M. Wurst.

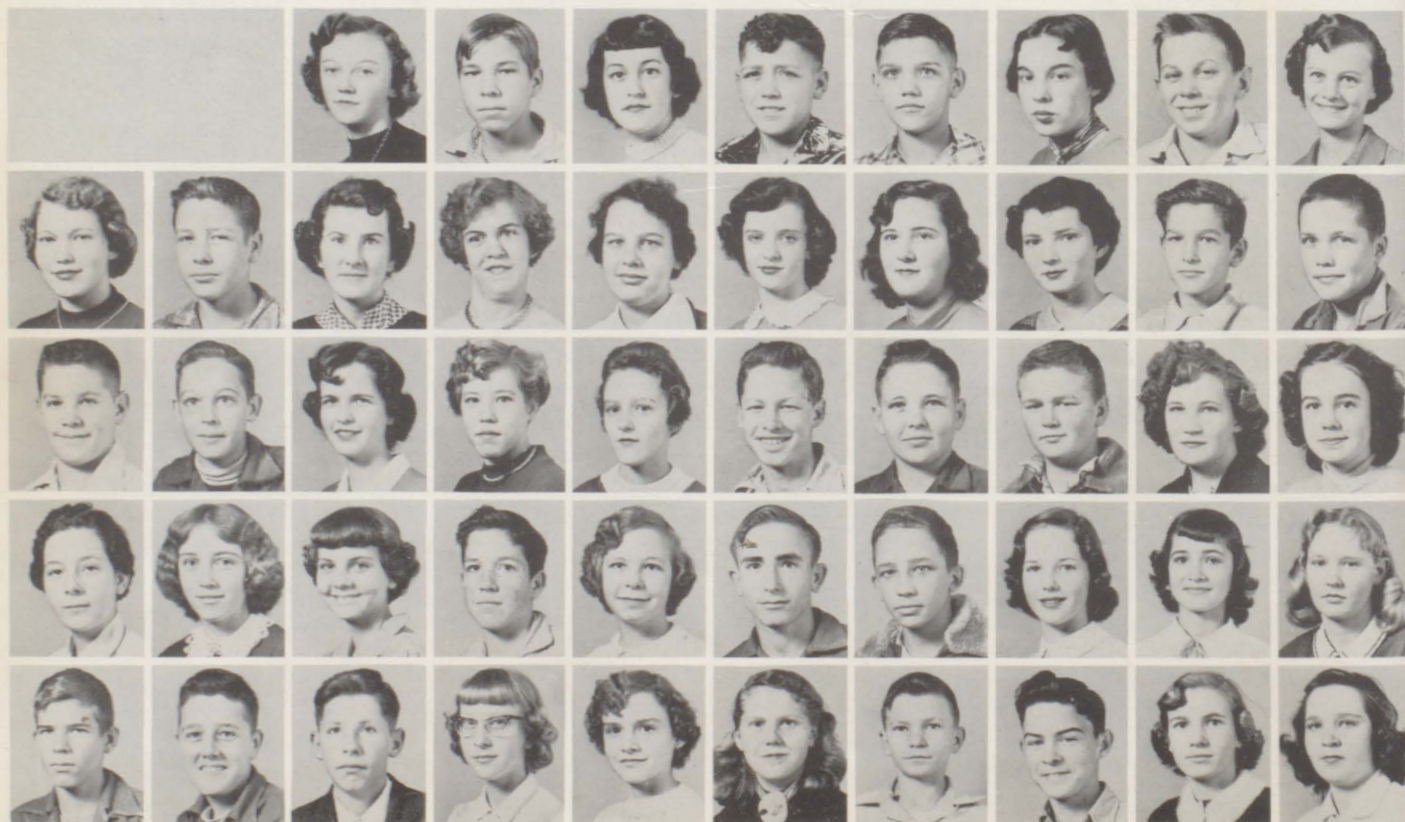




## *Eighth Grade*

The eighth grade boys at Phys Ed.

Top row: Aaron, Amos, Baggett, D. Baugh, J. Baugh, Benton, Boeschen, Brantley. Second row: Bray, Brown, Bryars, Burnette, Byrd, Cabiness, Cannon, Chastang, Clemmons, Cooper. Third row: Corbett, Crenshaw, Culver, A. Daniels, S. Daniels, Davidson, Davis, Dempsey, Donald, Duck. Fourth row: Durant, Eastman, Eddins, Fleming, Folsom, Fowler, Fox, Friel, Ganey, Gibson. Fifth row: H. Godwin, R. Godwin, Goins, Goodman, Gray, Greene, E. Hall, W. Hall, Harrelson, Hartley.







Harville, G. Hastings, L. Hastings, Heaton, Hinote, Hodges, Holmes, Hubbart, Ikner, B. Jacobson, E. Jacobson, G. Jerkins, S. Jerkins, A. Johnson, C. Johnson, D. Johnson, F. Johnson, R. Johnson, Joiner, Jones, Jordan, Kelly, Kerby, C. Lindsey, W. Lindsey, McCartha, McDill, McKinley, McLean, Martin, Miller, Mixon, Mizell, Money, Moore, H. Moseley, G. Mosley, J. Mosley, L. Mosley, Nix, Norsworthy, Owen, Paul, Phillips, Porter, Presley, Quinley, B. Rider, J. Rider, P. Rider, Roberts, Robertson, Robinson, Schram, Scott, Shipp, Smith, Stacey, Betty Stewart, Billy Stewart, N. Stewart, R. Stewart, Strickland, Strong, J. Taylor, P. Taylor, Thompson, Travis, B. Turner, G. Turner, J. Turner, Vines, Vinson, Waldrop, Wallace, Weekley, West, D. White, L. White, W. White, Wiggins, B. Williams, C. Williams, D. Williams, P. Williams, Willis, M. Wilson, O. Wilson, V. Wilson, Wright.





# Seventh Grade



Seventh Grade - That much longed-for year. The year we make our entrance into high school. It is a big step and takes a lot of adjustment but it was nothing for this year's class. They were seen in athletics, Glee Club and other organizations. We hope they will continue on in this same fine manner next year and in the years to come.



M. A. Adair, J. Alexander, B. Alford, L. Allen, S. Allen, E. Amos, S. Arrington, L. Barr, D. Baxendale, B. Beasley, C. Bell, D. Bell, C. Brane, T. Brannan, J.R. Branun, D. Broughton, J. Brown, E. Bundy, C. Byrd, C. Byrd, J. Byrd, M. Byrd, W. Byrd, C. Bryars, W. Bryars, J. Byrne, C. Cabiness, N. Casperson, S. Catrett, J. Collins, M. Chastang, B. Conway.





R. Cook, J. Cooley, R. Cunningham, J. Davidson, R. Davidson, J. Daw, J. Day, J. Dees, C. Dempsey, H. Duck, L. Duck, T. Duck, L. Durant, N. Earls, M. Emmons, C. Eubanks, G. Ferrell, B. Fleming, L. Fox, B. Franklin, C. Franklin, C. Fretwell, L. Fretwell, S. Gibbs, J. Gibson, R. Gideons, L. Gilbert, B. Gilliam, D. Gilliland, P. Godwin, D. Goins, W. Goins, R. Good, F. Graham, C. Green, S. Hadley, B. Hart, I. Harville, L. Harville, L. Hastings, N. Hastings, K. Hayles, W. Hill, J. Hinote, J. Hinote, P. Hinote, N. Homan, J. Irwin, A. Jacobson, D. Jerkins, R. Jerkins, V. Jerkins, C. Johnson, D. Johnson, W. Johnson, L. Johnstone, J. Joiner, R. Joyner, R. Killcrease, A. King, J. King, V. Lane, D. Langham, N. Langham, E. Lee, R. Lindsey, G. Little, J. Long, J. Long, L. McDuffie, E. McPhaul, B. Mann, E. Matthew, R. Minor, C. Moore, W. Mooror, B. Mosley, P. Mosley, N. Murphy, J. Nabors.





E. Overstreet, D. Owen, J. Paul, L. Peace, A. Perkins, C. Perkins, D. Perkins, B. Phillips, E. Philippi, J. Philpot, M. Porter, C. Powell, G. Powell, J. Powell, V. Presley, R. Pudon, V. Pugh, C. Quinley, J. Quinley, J. Quinley, T. Quinley, B. Rains, D. Rains, B. Reed, B. Richburg, R. Rider, W. Roberts, L. Robertson, M. Robertson, C. Rogers, J. Ryba, N. Schram, S. Shultz, W. Shiver, J. Sibley, M. Skipper, E. Sloan, H. Smith, J. Smith, J. Smith, M. Smith, D. Sprinkle, S. Stamps, J. Steward, B. Stewart, G. Stewart, G. Stuckey, J. Stuckey, L. Taylor, L. Taylor, B. Thomas, A. Trawick, G. Trawick, M. Travis, K. Turner, V. Turner, E. VanDyke, A. Vinson, L. Vinson, C. Waldrop, C. Waldrop, J. Wall, R. Wasdin, G. Weaver, C. Weekley, J. White, L. White, R. White, D. Williams, K. Williams, L. Williams, P. Williams, G. Wilson, H. Wilson, P. Wilson, P. Wood, B. Wright, H. Wurst, A. Yarborough.



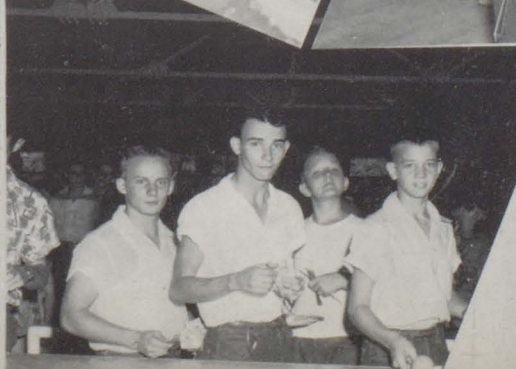
FRESHMAN FROLIC



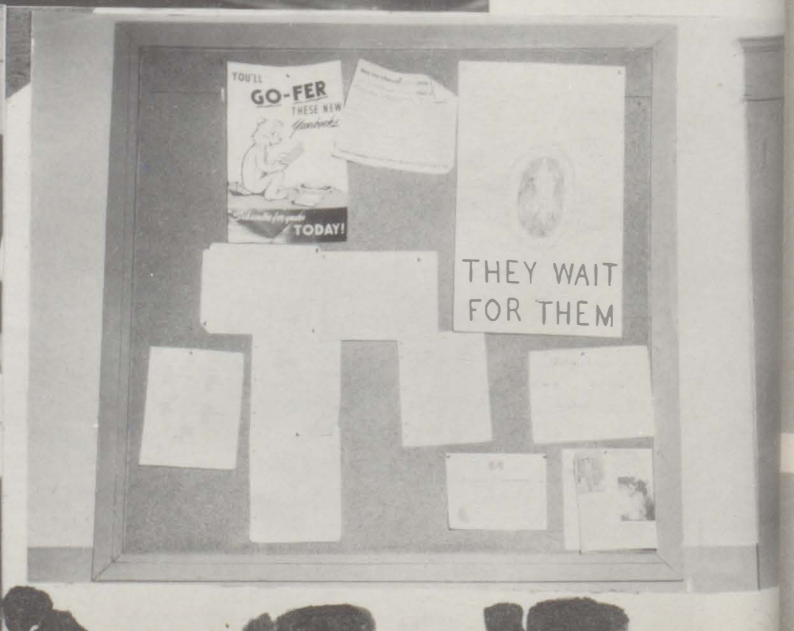
















*Favorites* ☆



*Mr. and Miss B.C.H.S.*



*Doyle Weekley*

*and*

*Anne Reid*





SHIRLEY CAPRARA  
Homecoming Queen



BARBARA HARWOOD  
Good Citizenship Girl



EMILY WELDON  
Corn Derby Queen



JOYCE HASTINGS  
Dairy Maid Queen





# *May Queen*



*Nancy Claire Friel*





JEAN FRIEL



EMILY WELDON

*and Court*

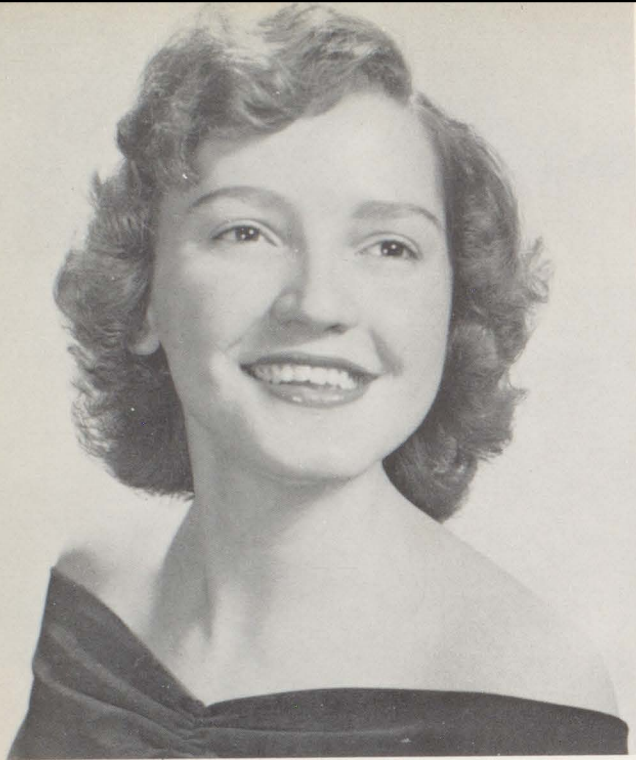
RUTH LAMBERT



JEAN REID







BARBARA HARWOOD  
Social Studies

*Senior*

NANCY DURANT  
English

VERMELLE McDILL  
Math





Honors



PEARL GODWIN  
Home Economics

JIMMY McDILL  
Top Magazine Salesman

MYRTLE LOU EDDINS  
Science





NANCY FRIEL and JOHNNY MCGILL  
Most Attractive



SHARON RICHERSON and JON KNIGHT  
Cutest



PEARL GODWIN and BILLY WALKER  
Most Likely to Succeed

## *Senior Who's*

JUDY LAMBERT and ERNEST MILLER  
Most Popular

PAT BELL and NEIL WHITE  
Most Talented







GLINDA NANCE and CHUBBY STOUGH  
Most Friendly



GEORGE DAY and BETTY JO HEATON  
Most Studious



RUTH LAMBERT and JERRY BARNES  
Most Active

BARBARA HARWOOD and HENRY POSTMA  
Best All-Around

MARY LOU GRIFFIN and CARROLL HEAD  
Most Dependable





Most Friendly  
JANE TURNER and TOMMY STRICKLAND



Most Athletic  
SUE MARTIN and JERRY DAVIDSON



Cutest  
PAT PAGE  
and  
JERRY BALLARD



Most  
Popular  
ANN BLACKBURN  
and  
HARRY CAPRARA

Most Attractive  
KATHRYN TURNER and BUTCH BEASLEY



Most Studious  
HELEN WURST and JOHNNY HINOTE







Activities



OFFICERS - President, Charlie Aylin; Vice President, Johnny Chason; Recording Secretary, Hope Neely; Corresponding Secretary, Anne Reid; Treasurer, Billy Walker.

## Beta Club

Induction of new members



Miss Ruth West - Advisor







Top row: Aylin, Barnes, Bodden, Bolon, Broughton, Bryant, Caprara, Chason, Chestnutt, Cook. Second row: Corley, Crosby, Davison, Day, Duck, Durant, Eddins, Eubanks, Faulkner, Friel. Third row: Godwin, Goins, Griffin, Harrell, Harris, Harwood, Hayles, Head, Heaton, Heaton.



Top row: Hinote. Second row: Hoffman, Holmes, Howell, Knight, R. Lambert, J. Lambert, Langham, Lyles, Maulden, D. McDill. Third row: V. McDill, McDuffie, Neely, Owen, Post, Presley, C. Prestwood, F. Prestwood, Reid, Richerson. Fourth row: Sims, Skinner, Stokley, Strickland, Walker, Wallace, Weldon, M. Willis, B. Willis, Wood.

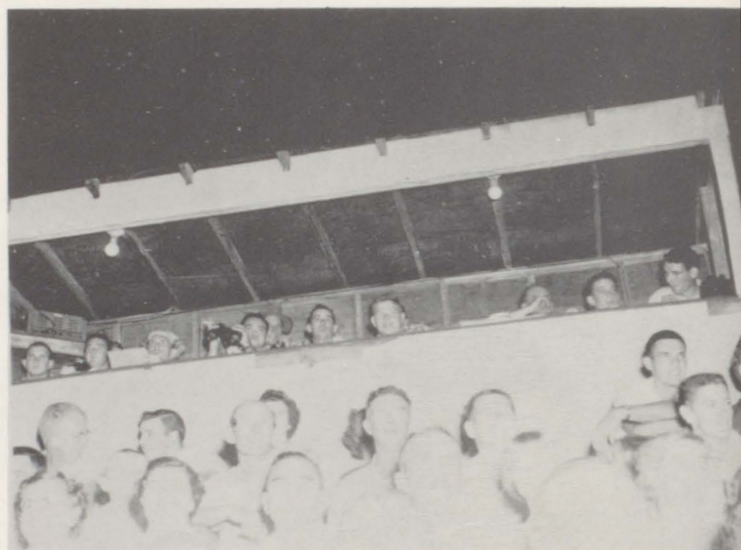




# Key Club



OFFICERS: Billy Walker, President; Chubby Stough, Vice President; Johnny Chason, Secretary-Treasurer.



Key Clubbers work in press box

At a Meeting

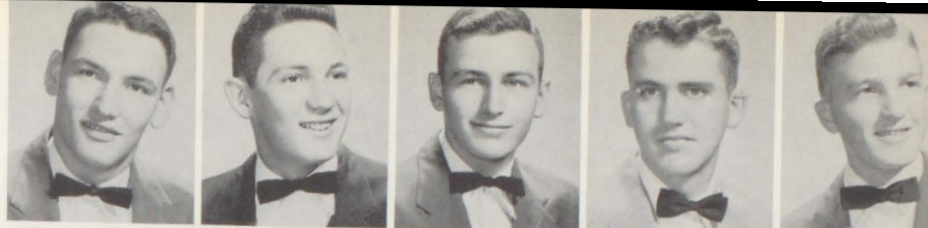


Advisor - "Judge" White





Charlie Aylin  
 Jerry Max Barnes  
 Jimbo Berry  
 Murray Bryant  
 Earl Chancellor



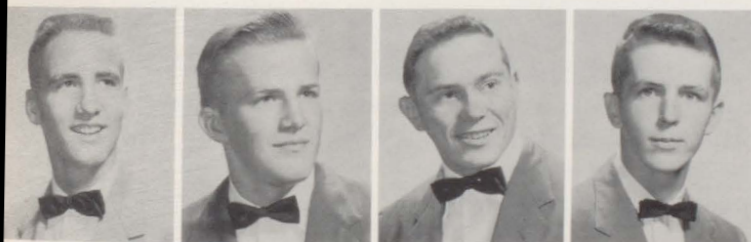
Johnny Chason  
 David Chesnutt  
 Jyon Corbett  
 Brown Crosby  
 Jimmy Faulkner, Jr.



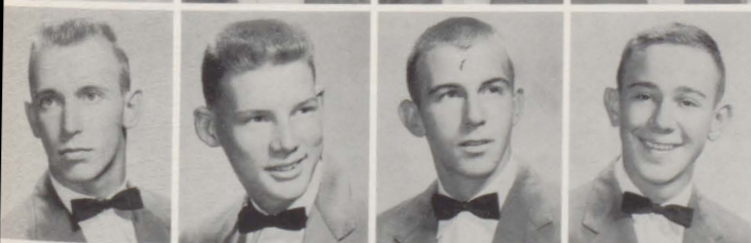
Wade Faulkner  
 Tony Gibson  
 Emmett Hall  
 Robert Harrell  
 Carroll Head



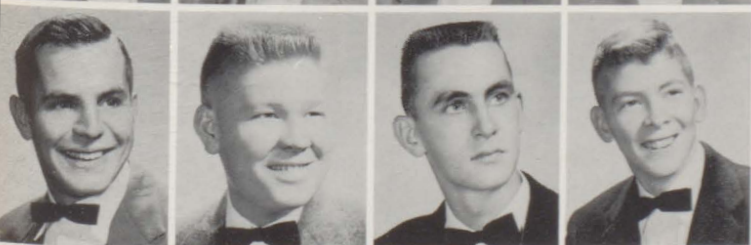
## *More Key Club*



David Lindsey  
 Johnny McGill  
 D. C. McKinley  
 Ernest Miller



Wayne Post  
 Henry Postma  
 George Robinson, Jr.  
 Jimmy Smith



William Stough  
 Billy Walker  
 Doyle Weekley  
 Sonny Wilkins



Kenneth White  
 Neil White  
 Ben Willis  
 Frank Yarbrough

# Future Homemakers



OFFICERS

The F. H. A., a group of girls interested in the finer arts of housekeeping, cooking, sewing, and child care, was under the direction of Mrs. Doris Hodgson.

As one of their projects, they again undertook the job of providing a dessert and drink for the Key Club at the weekly noon meetings.

Each month the F. H. A. selected a Future Homemaker of the Month. From these they picked Pearl Godwin as Future Homemaker of the Year.

The projects of F. H. A. are divided into three categories: national, state, and local. One of these projects was called "Mirror," which celebrated the 10th birthday of the F. H. A. A few of their other projects were: Families Together, a program for bringing families closer together in the home; World Christmas Festival; and a Beautification of Home, School and Community Program.

The program theme this year was "Builders for Better Homes."

The F. H. A. deserves a lot of credit for their fine work this year. We hope there will be many more girls interested in joining this fine organization.

CANDY SALE



MEMBERS PRESENT PROGRAM







Top row: Allen, Ardis, Bolon, Broughton, Caprara, Clark, Duck, M. Durant, W. Durant, Godwin. Second row: Griffin, Graham, J. Hadley, S. Hadley, A. Hayles, Hubbard, Hodges, Howell, King, Lee.



OPERATION P. T. A.

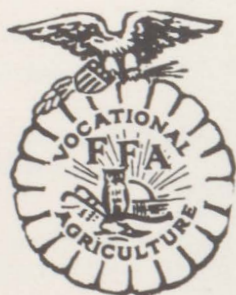
Top row: Phillips, Prestwood, Rieben, Robinson, Slay, Stewart, Strickland, Taylor, West, Bray. Second row: Chafin, Cruzan, Eubanks, Gainer, Jones, Killcrease, McCaw, McDill, Nance, Neal. Third row: Overstreet, Phillips, Presley, Prestwood, Quinn, Richerson, Rider, Russell, Sutton, Williams.







Mack Paul, Thomas Allen, Carroll Head, Lance Philips, Glen Wasdin, Thomas Robinson, Mr. Nall.



*F.F.A.*



Watch Those Fingers



Completing Those Projects





Is business that bad?



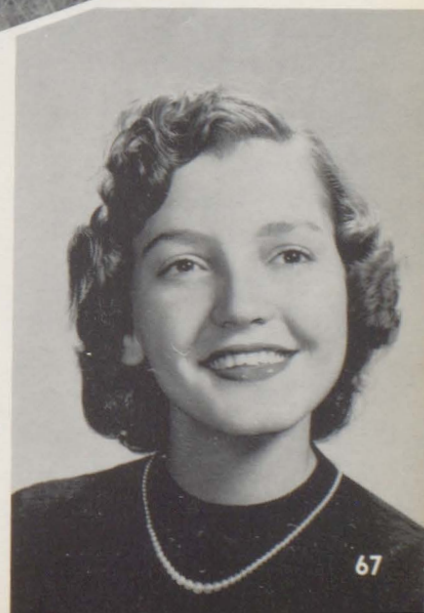
Working hard



Green Gold



Ag. Queen  
Barbara Harwood







# D.O. Club

Jon Knight, Vice President; Albert Crane, President;  
Charles McKinley, Reporter; Clarice Chafin, Secretary;  
Louise Johnson, Treasurer; Nancy Durant, Reporter.

## Diversified Occupations

The D.O. program is an organized plan of training on the job under actual industrial conditions. It offers an opportunity to secure training and earn a salary while completing high school. Besides offering training, D.O. helps establish desirable work habits, and attitudes.

Others besides the students benefit through this program, though. Through it the school is able to offer a broader curriculum. The community is able to have a part in training youth for its own need.

So as you see, we all owe Mr. Jones a vote of thanks for his wonderful work in this fine organization.



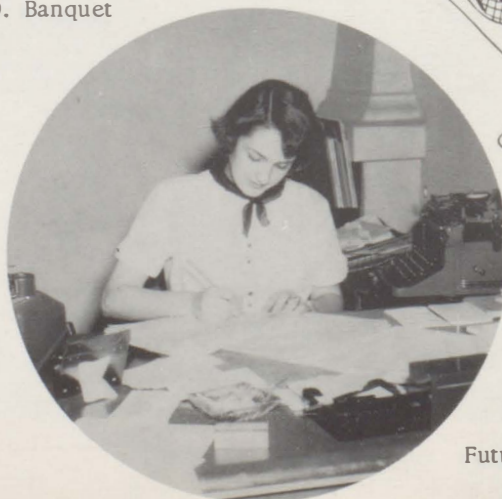
D.O. Christmas Party



D.O. Banquet



Jon and his "Knight" work



Future Secretary







Mr. and Miss D. O.  
CLIFTON WHIDBEE and MARGARET HOLMES

Chafin  
Harville  
McDill

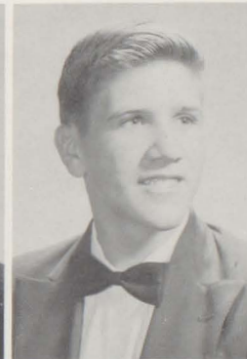
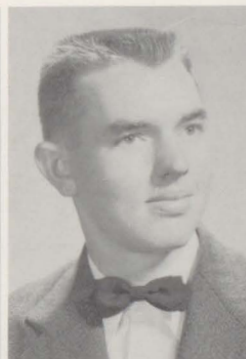
Chastang  
Holliday  
McKinley

Crane  
Holmes  
Newton

Durant  
Johnson  
Peavy

Graham  
Knight  
Scogin

Hall  
Lee  
Wilson





# Science Club



Sponsor, Miss Leonard, explaining the Geiger Counter



Scientists?

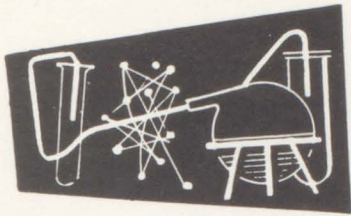


Busy Chemists

OFFICERS: M. Holmes, President; Ben Willis, Vice President; Ruth Lambert, Recording Secretary; Betty Jo Heaton, Corresponding Secretary; Henry Postma, Parliamentarian; Doris Day, Treasurer.







Bell  
Friel  
Howell  
Postma

Brannan  
Harrell  
J. Lambert  
Prestwood

Chesnutt  
Head  
R. Lambert  
Smith

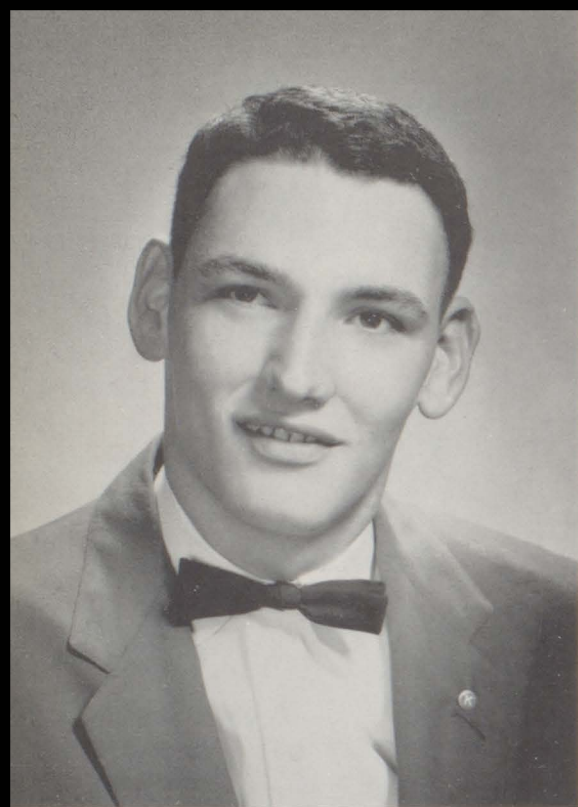
Day  
Heaton  
McDill  
B. Willis

Eddins  
Hoffman  
Miller  
M. Willis

Faulkner  
Holmes  
Neely  
Weekley







CHARLIE AYLIN  
Editor-in-Chief

# Balcoala

As you may have noticed, we have published a different type of annual this year. As our theme states, one must leave his footsteps on the sands of time, and we hope that we have left a pleasant footprint on the sands of old Baldwin High School. We hope that you, the students of B. C. H. S., will appreciate our effort.

When publishing an annual of this type, you have many people who give their time and talents and without whom an annual could not be published.

I would like to put credit where credit is due. Of course, to put out an annual of this type requires finances, and that is where my very competent Business Manager, Jerry Barnes, came in. Jerry, Chubby Stough, Assistant Business Manager, "Monk" Robinson, and Ben Willis, worked very hard and came through with flying colors with the advertising sales. Thanks to Ruth Lambert, Anne Reid, Hope Neely, Becky Sims, and Toni Bodden, for the fine job of lay-outs and write-ups. Jimmy Faulkner handled our sports statistics and did a good job. Thanks also to Billy Walker and his sales

staff for the wonderful job on sales. Always ready when called on for publicity was Nancy Friel, Advertising Manager. Last, but certainly not least, is Ernest Miller, a young man who spent countless hours with a bag of flashbulbs and "Verichrome Pan" taking the fine pictures seen in this book. I would like to thank Pauline Eubanks and Judy Lambert, two girls who were not on the staff but who worked very hard at the typewriter for us.

I cannot express in words the help that Mr. Echols gave us in getting this annual to press. He was always ready, willing, and able to help us solve our problems and to eat a snack at our night sessions. Thanks, Mr. Echols.

Thanks to Harry Raske for his patient and creditable work with the portraits. Without them we would have been much later with the publication of the '56 Balcoala.

Then finally, to Mr. Daniels, Mrs. Nealy and to the faculty of B. C. H. S. we pay our tribute and say "thanks" for the wonderful help and cooperation that you gave us.

And now, to the students of BALDWIN COUNTY HIGH SCHOOL, we present the 1956 BALCOALA.

ERNEST MILLER  
Photographer

ANNE REID  
Literary Ed.

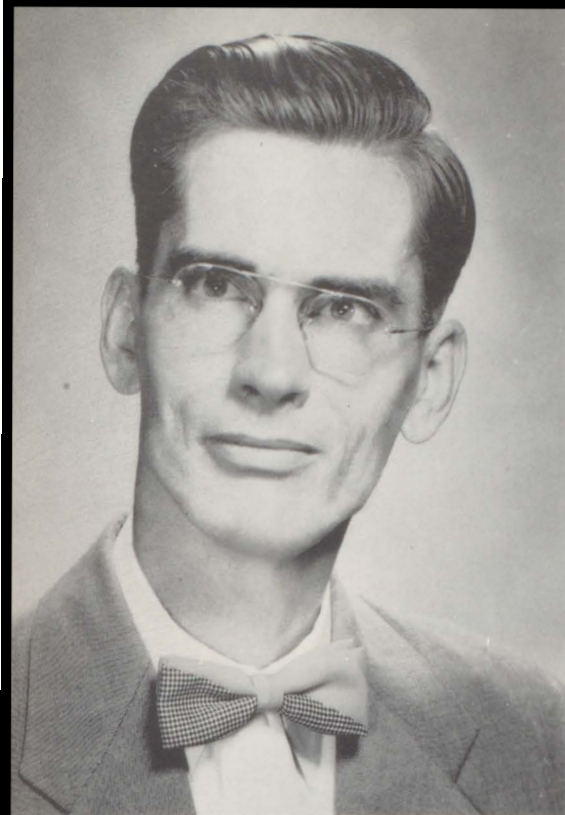
TONI BODDEN  
Asst. Lit. Ed.

RUTH LAMBERT  
Asst. Editor

JIMMY FAULKNER  
Sports Editor





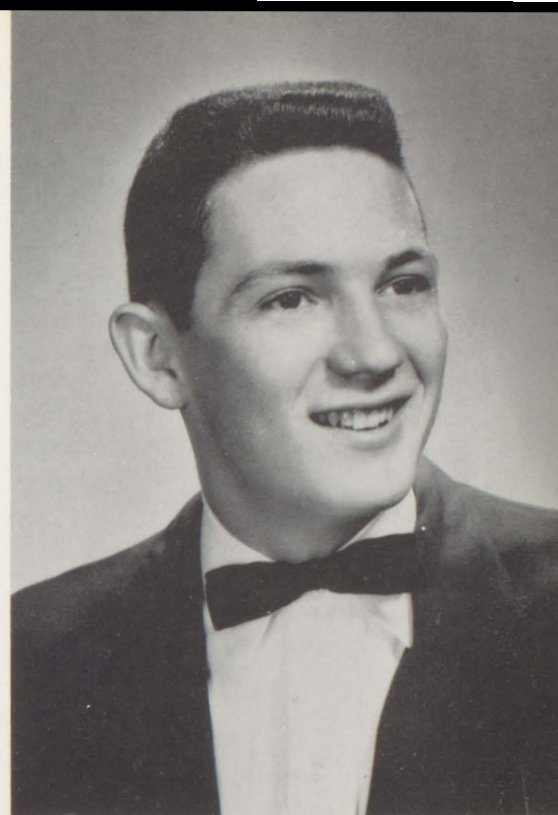


MR. ECHOLS  
Advisor

Ad Staff  
MONK ROBINSON  
BEN WILLIS  
JEAN REID  
LAURA HAMILTON  
BECKY SIMS

Helpers  
PAULINE EUBANKS  
JUDY LAMBERT  
JYON CORBETT  
NORMAN AYLIN

Sales Staff  
ROLAND McNEELEY  
WILMA DURANT  
DORIS DAY  
PEARL GODWIN  
MYLETO WILLIS  
JAYNE BOLON  
PATSY McDUFFIE  
WADE FAULKNER



JERRY BARNES  
Business Manager

Sales Staff  
DOYLE WEEKLEY  
EMILY WELDON  
CONNIE ADAIR  
SHIRLEY RICHBURG  
BILL JOHNSON  
LARRY CATRETT  
TONI BODDEN  
PATSY CATRETT

We have tried very hard to give everyone the credit that they deserve, however, we may have left someone out. We hope we haven't, but if we have overlooked someone, please accept our apologies and realize that we certainly didn't do it on purpose. Thanks, once again to everyone who played a part in putting this book out.

BILLY WALKER  
Sales Manager

HOPE NEELEY  
Art Editor

NANCY FRIEL  
Publicity Editor

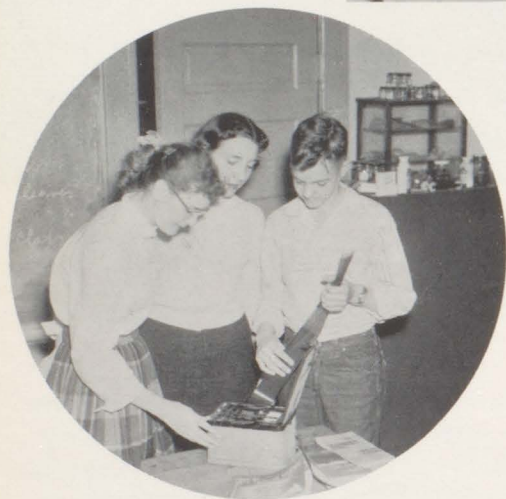
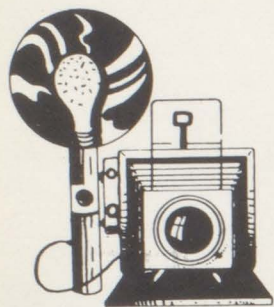
BECKY SIMS  
Ass't. Lit. Ed.

CHUBBY STOUGH  
Ass't. Bus. Mgr.





# Camera Club



OFFICERS



What a pose

Dig these crazy negatives

Cook  
Friel

Corbett  
Hamilton

M. Eddins  
Miller

S. Eddins  
Nance

Eubanks  
Richburg

Faulkner  
Weekley





# F.F.A.



## OFFICERS

President - - - - - Patsy Catrett  
 Vice President - - - - - Mary Lou Griffin  
 Secretary-Treasurer - - - - - Pearl Godwin  
 Parliamentarian - - - - - Barbara West



Sponsor, Mrs. Bennett with Eubanks and Cook

First row: Ballard, Bell, Bodden, Brannan, Catrett, Duck, Eubanks, Godwin, Graham. Second row: Griffin, Hinote, Lee, Maulden, McDill, McDuffie, Presley, Prestwood, Quinley. Third row: Reid, Robinson, Steedley, Stokley, Strickland, Sutton, Thomley, West, Willis.







Senior and Junior Officers of Library Club

Clubbers survey their handiwork



# Library Club



Cook  
McNeely  
Wood



Garner  
Prestwood

Granger  
Russell

Howell  
Sibley

Jackson  
Trawick

Little  
White

McDill  
Williams





# Spanish Club



1956 Officers of the  
Spanish Club



Just a little siesta.



Don't you know Spanish?

Ballard  
Phillips

Gibson  
Prestwood

Jaye  
Prestwood

Hadley  
Slaughter

Hubbard  
Sutton

McDill  
West

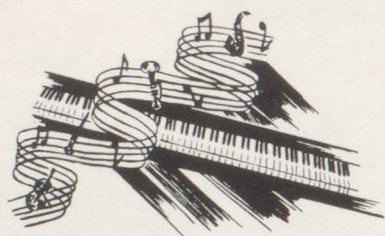
Peterson  
Wood







1956 Officers of Music Club



# Music Club

Music Club entertains at assembly



Ballard  
Clark  
Neely

Bell  
Friel  
Reid

Bolon  
Godwin  
Skinner

Brannan  
Lambert  
Stokley

Bodden  
McDill  
Taylor

Catrett  
McDuffie  
Weldon







Officers, Stough, Willis,  
and Feminear,

Jerry Barnes  
Pat Bell  
Jimbo Berry

Johnny Chason  
Nancy Friel  
Carroll Head

## "B" Club

Margret Holmes  
Ruth Lambert  
Ernest Miller



Johnny McGill  
D. C. McKinley  
Henry Postma



It's My Turn



"Monk" Robinson  
Becky Sims  
Moonyene Stokley



"Chubby" Stough  
Doyle Weekley  
Ben Willis

Further "B" Initiation

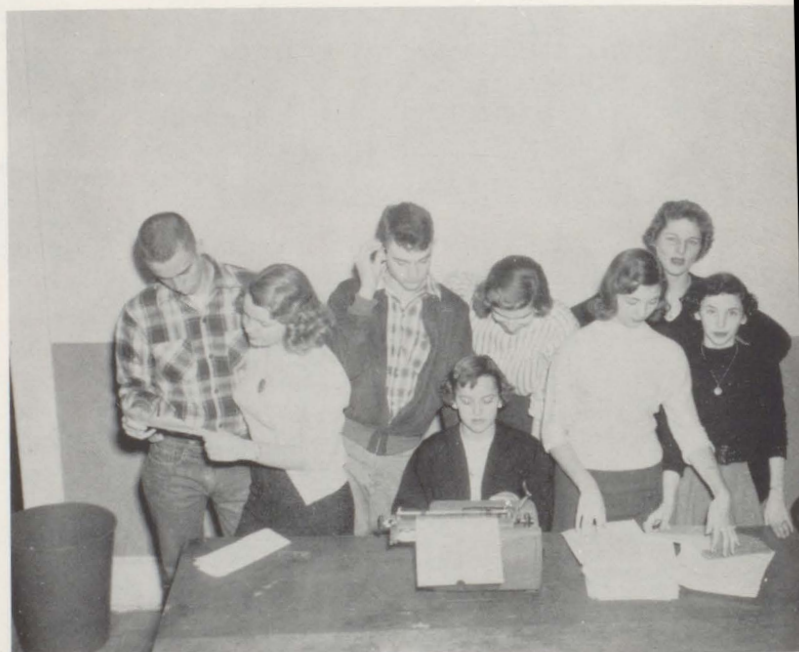






"Press Room"

# The Balco



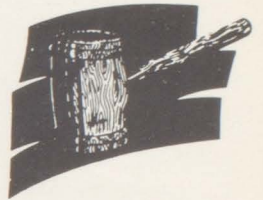
The Balco Staff



Busy Thinking?



# Student Council



Left to right: Jo Ann Hoffman, Treasurer; Betty Jo Heaton, Secretary; Billy Walker, President; Margaret Holmes, Vice President.

Berry  
B. Heaton  
Ryba

Broughton  
L. Heaton  
Seay

Brantly  
Long  
Sibley

Chesnutt  
McDill  
Stough

Cowser  
Norsworthy  
J. Turner

Griffin  
Prestwood  
K. Turner

Hamilton  
Richerson  
Walker





# *Glee Club*

## *"Joyous and Jovial"*



Miss Gwen Riley came back as our Glee Club Teacher this year as Mrs. W. J. Hooper. Under her direction, the choir began practicing for their Christmas Concert the first few days of school. Those who were lucky enough to be in the A Cappella Choir met on Tuesdays and Thursdays, while the Regular Choir met the remaining three days.

After many weeks of hard practicing, the group was ready for the concert. The concert consisted of selections by the Senior Glee Club, A Cappella Choir, Junior Glee Club, and Junior High Boys' Chorus.

On arrival back at school after the Christmas Holidays, the choir immediately began work on their Spring Concert. The audience again enjoyed the well-planned concert very much.

Those who are Seniors regret having to leave the Glee Club, but are happy that they have had the wonderful experience of joining others in the enjoyment of singing.

## *A Cappella Choir*

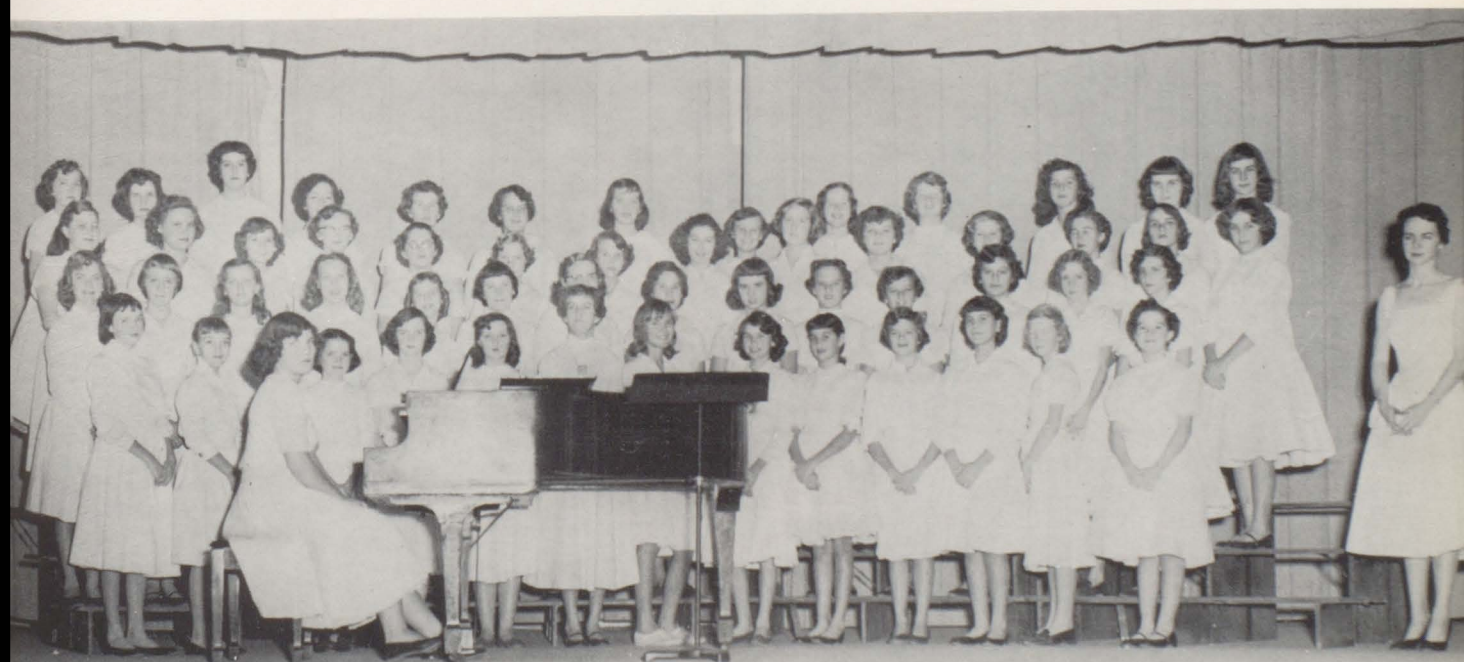






*Senior High Glee Club*

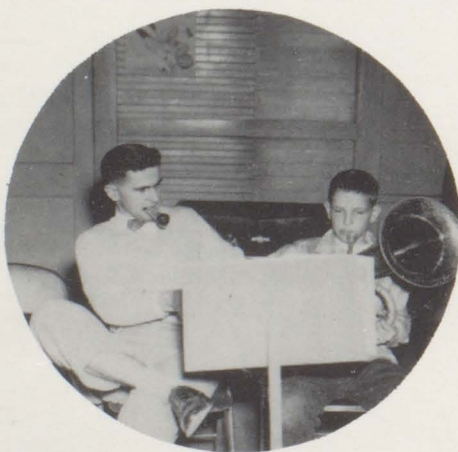
*Junior High Glee Club*







## *The "Tiger" Band*



Bandmaster FORD ALFORD



Ever-faithful Band Bus





Band forms "T" for Tigers at Football Game.

The Baldwin County High School Band, under the able direction of Mr. Ford Alford, had a very successful year.

Several band students attended the band festival this year and many came out with honors.

The band was a very prominent part of the football festivities and their half-time shows were enjoyed very much.

Mardi Gras is fun time and work time for the band. This year they participated in several parades and the "home folks" watching TV were very proud of them.

Dig these crazy musicians.



Just waiting and grinning.







The "Tiger Band" performs at the Atmore game



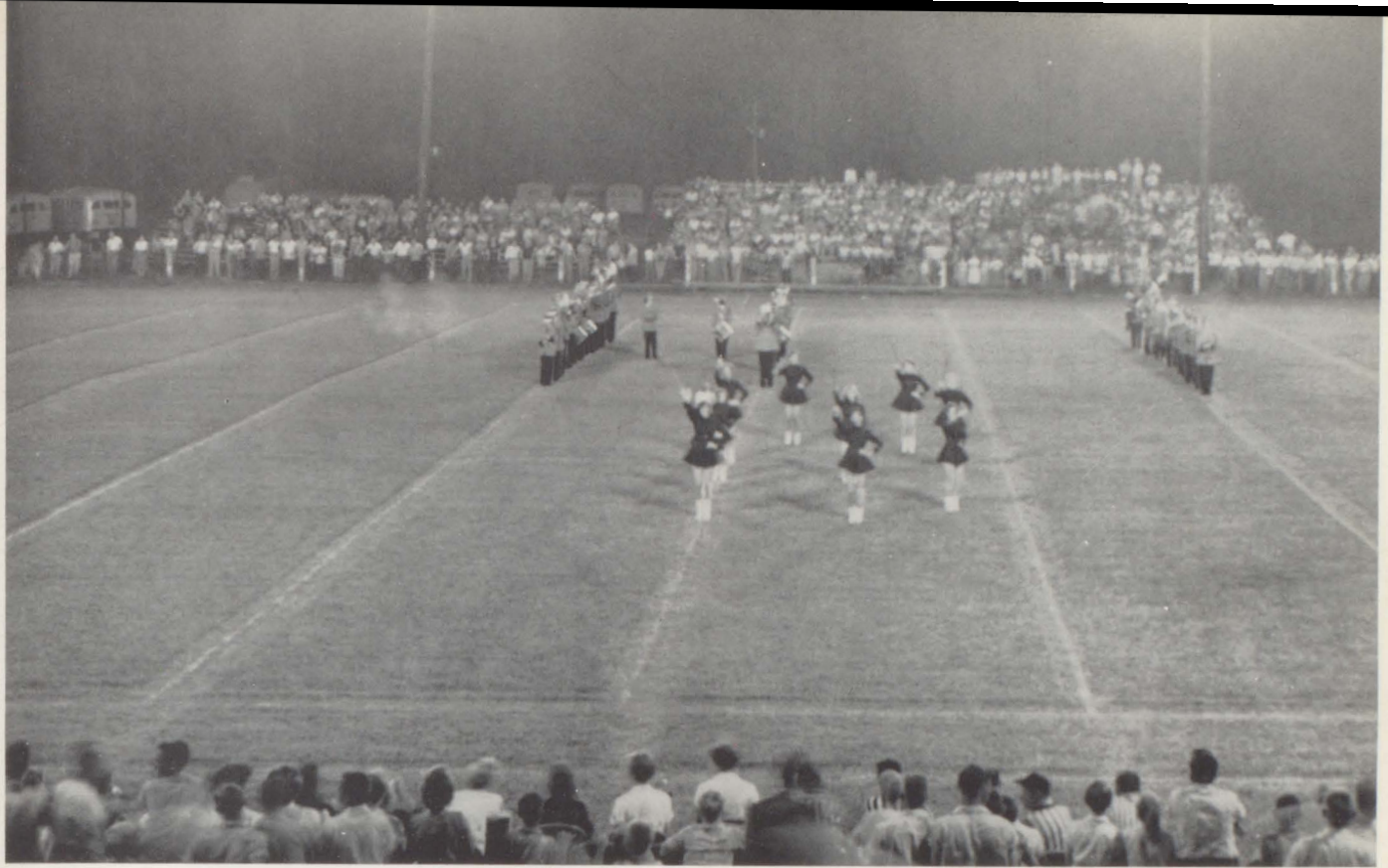
Band on parade



Pep rally on the square



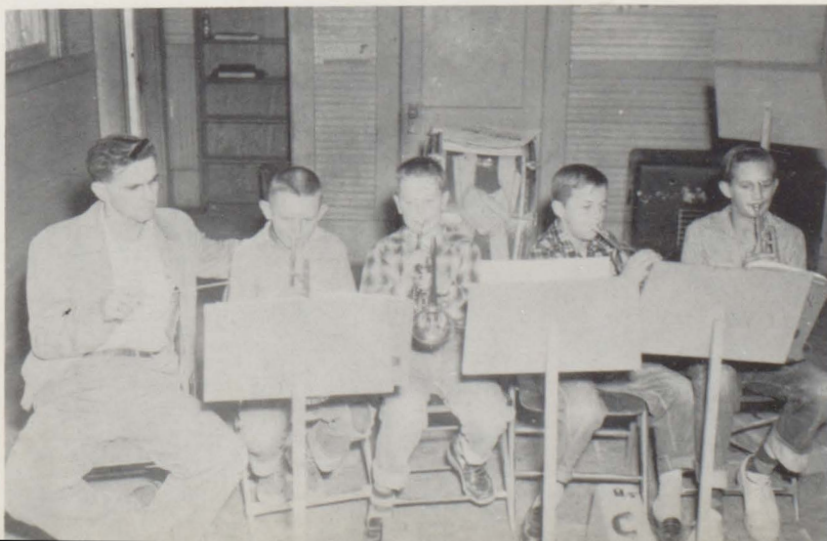




The Band greets Evergreen with a warm welcome.



One, two, three, "toot."





# Future Nurses Club



Right to left: President, Vermelle McDill; Vice President, Connie Adair; Recording Secretary, Pat Bell; Treasurer, Betty Jo Heaton; Corresponding Secretary and Reporter, Elaine Smith.

Ye old meeting place.



Adair  
McDill  
Williams

Bell  
Peavy

C. Eubanks  
Prestwood

P. Eubanks  
Reiben

Hamilton  
Richburg

B. Heaton  
Smith

D. Heaton  
Sutton





# Dramatics

Advisor, Mr. Echols



A-Feudin' Over Yonder Cast



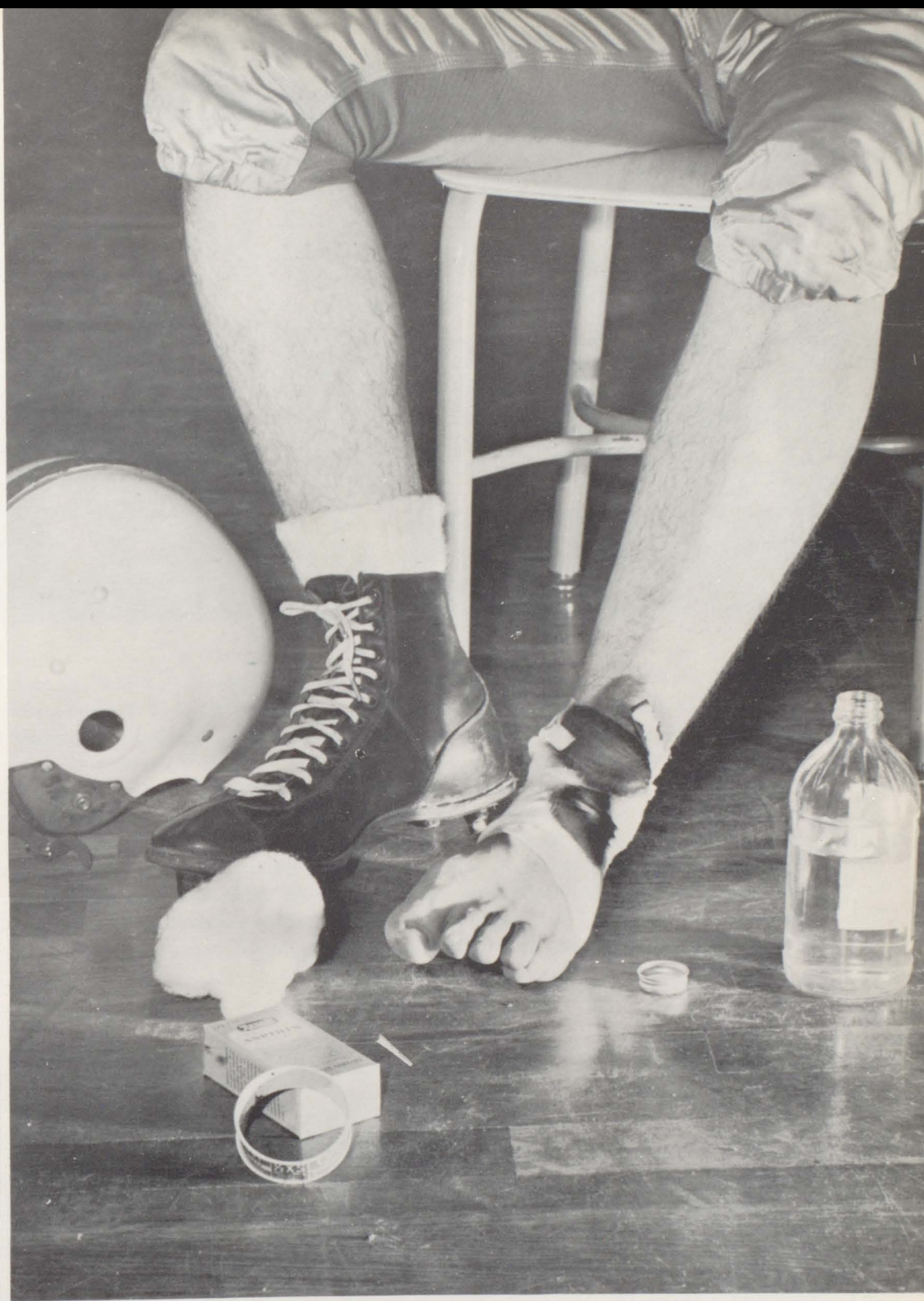
Will He Be Well Enough to Act?











*Athletics* ☆



# Football



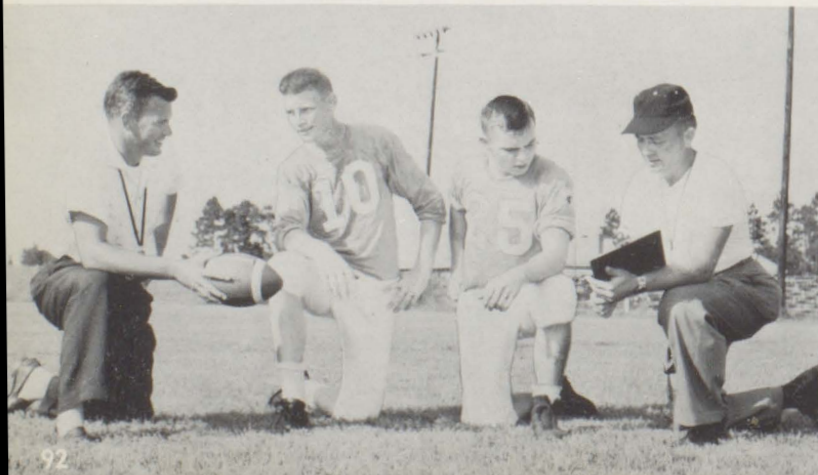
Head Coach JOHN JENNINGS



Assistant Coach W. R. "PINKY" WILLIAMS

Well, it looks like Coach Jennings' first year at B. C. H. S. was a fairly good season in football and an excellent improvement over last year. Although eleven seniors will graduate from the team, the showing of the "B" Team this year promises an excellent season for football next year. The Tigers won 6 games and lost 4, however, the highlight of the year was the defeat of our rival, Atmore, which we will all agree was more than payment for the 4 lost games. Another outstanding game of this season was the clash with Foley, which was the county champion, losing only one game. Although the Tigers didn't win the victory in points, it gained morale from this game, holding the Lions down to 14 points and coming within yards of scoring themselves. Thus we end another season of football with great expectations for next year, encouraged by this year's improved team spirit shown by the players and also the greatly improved school spirit displayed by the cheering of the students.

Captains Stough and Postma with the coaches



Those anxious moments!







#### LINE

Seated, left to right: N. Smith, F. Powell, J. Nelson, B. Clemmons, C. Head, P. Rider, T. Wilkins.  
 Kneeling: H. Smith, E. Gilbert, J. Cowser, A. Conway, F. Wasson, J. Corbett, D. Windham, B. Crosby, Coach Williams. Standing: N. White, K. White, G. Robinson, J. Chason, C. Stough, W. Post, B. Taylor.

#### BACKFIELD

Kneeling, left to right: J. Berry, L. Catrett, G. Day, H. Hall, J. Smith. Standing: B. Feminear, D.C. McKinley, B. Willis, H. Postma, J. McGill, B. Yarbrough, Coach Jennings.







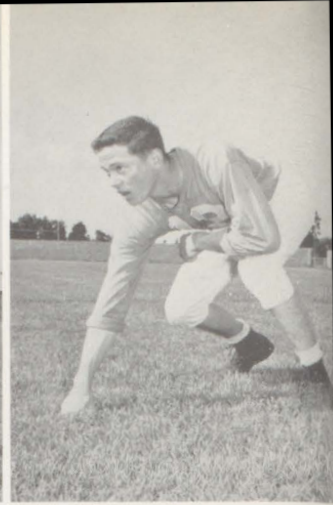
HENRY POSTMA  
Quarterback



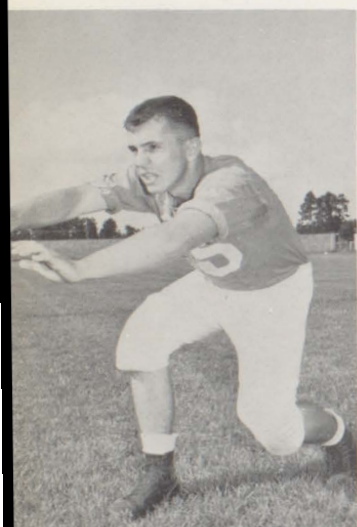
BEN WILLIS  
Halfback



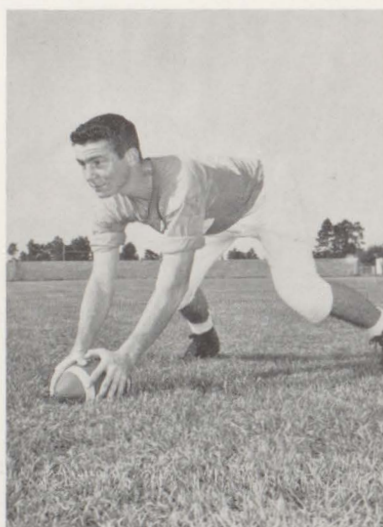
BILLY JOE FEMINEAR  
Fullback



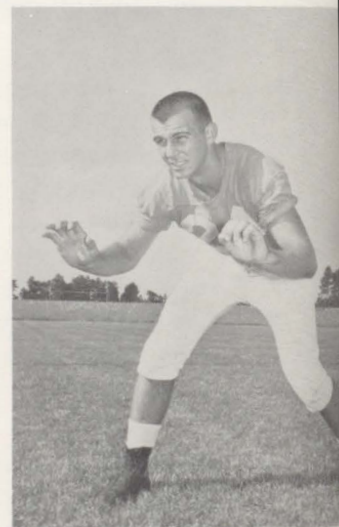
D. C. McKINLEY  
Halfback



WILLIAM STOUGH  
Guard



JOHNNY CHASON  
Center



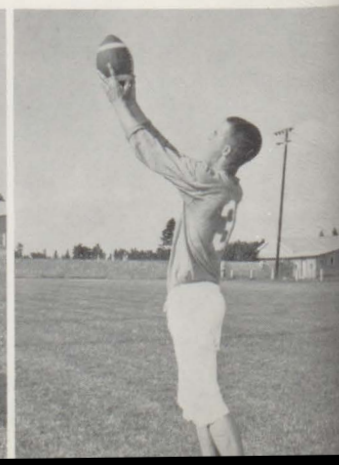
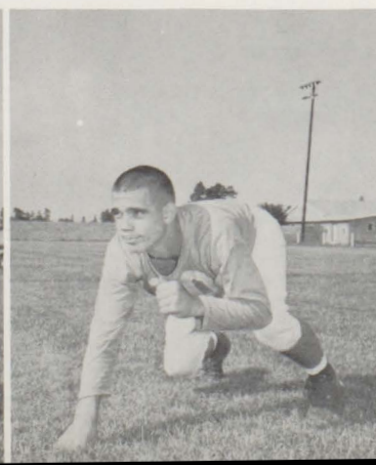
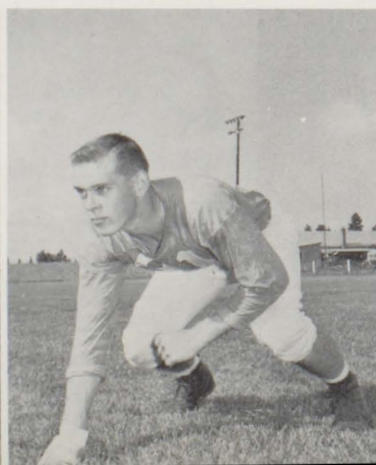
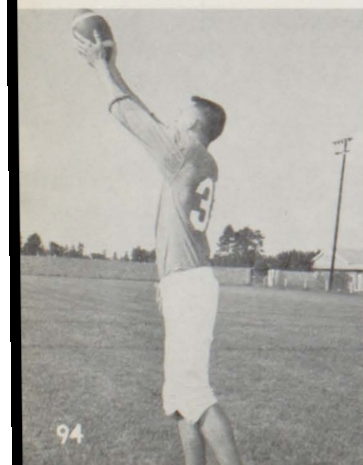
GEORGE ROBINSON  
Guard

BOBBY TAYLOR  
End

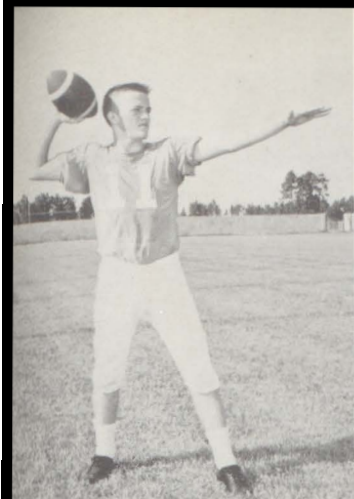
CARROLL HEAD  
Tackle

AUTRY CONWAY  
Tackle

KENNETH WHITE  
End



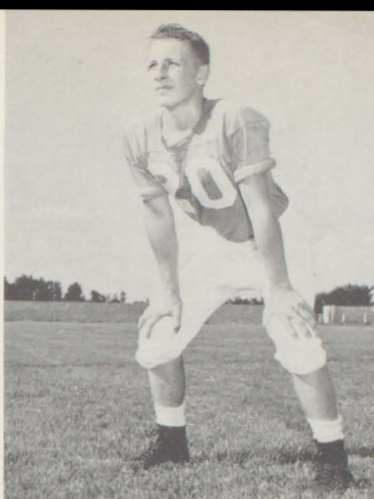




JOHNNY MCGILL  
Quarterback



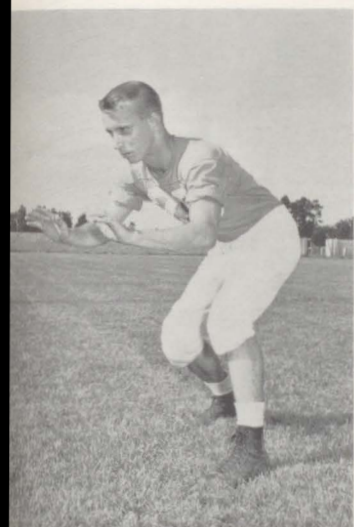
JIMBO BERRY  
Halfback



GEORGE DAY  
Fullback



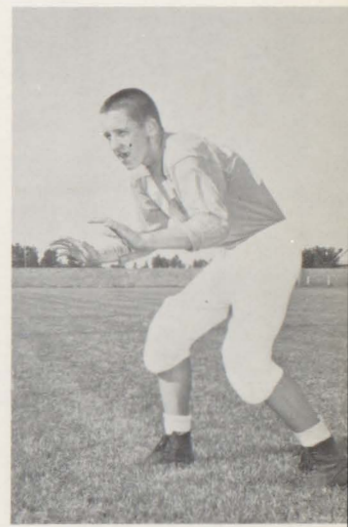
BUDDY YARBROUGH  
Halfback



WAYNE POST  
Guard



BROWN CROSBY  
Center



BUDDY CLEMMONS  
Guard

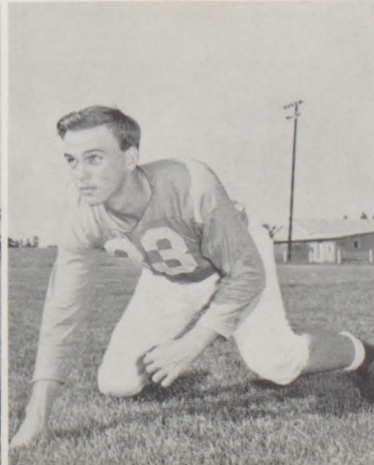
DAN WINDHAM  
End



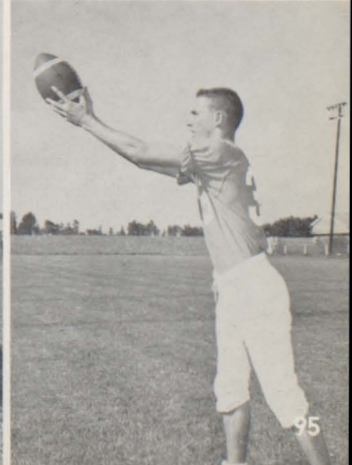
JYON CORBETT  
Tackle



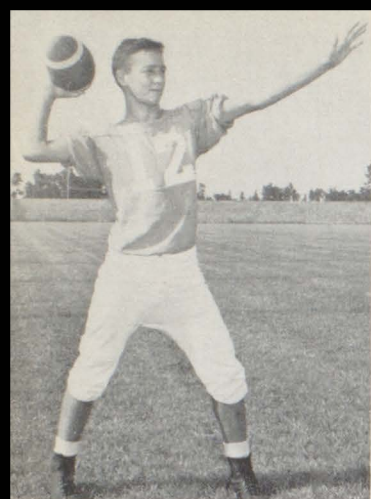
FRED WASSON  
Tackle



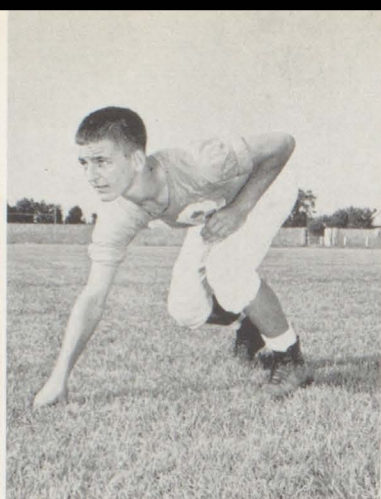
NEIL WHITE  
End







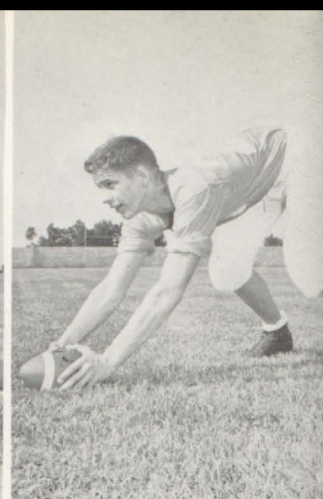
LARRY CATRETT  
Quarterback



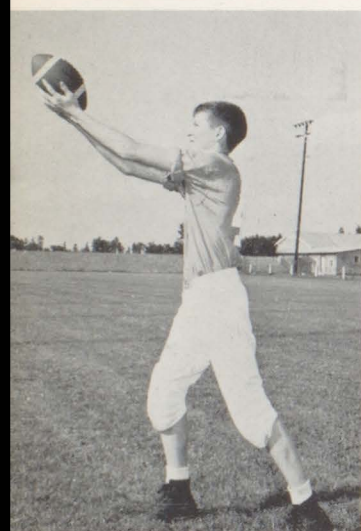
HAROLD HALL  
Halfback



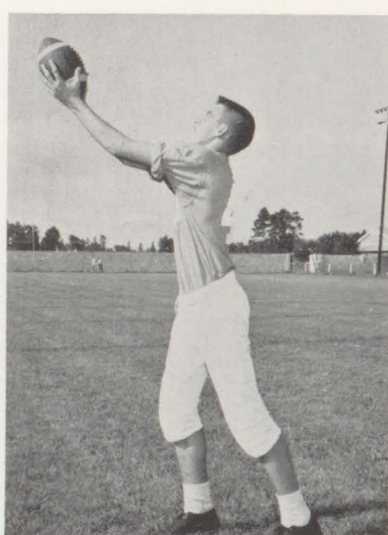
JIMMY SMITH  
Halfback



JACK COWSER  
Center



SONNY WILKINS  
End



FRED POWELL  
End



HAROLD SMITH  
End

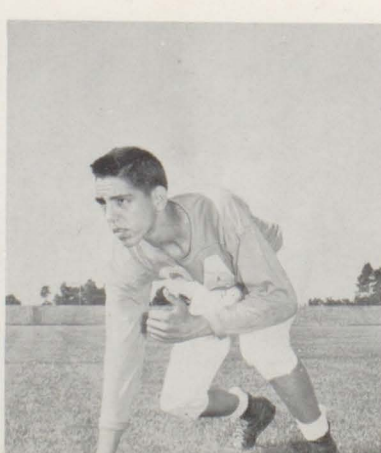
PAUL RIDER  
Guard



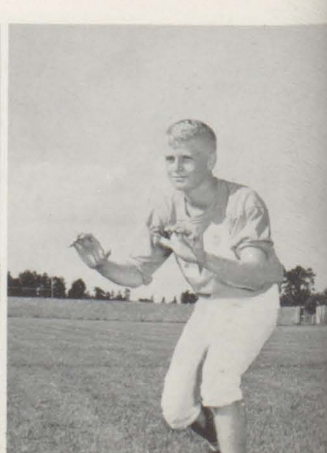
JIMMY NELSON  
Tackle



EDWARD GILBERT  
Tackle



NEWMAN SMITH  
Guard







Managers Ballard, Davidson, and Strickland

"Coach" in his playing days



#### INDIVIDUAL SCORING

|          |           |    |
|----------|-----------|----|
| Feminear | - - - - - | 36 |
| Willis   | - - - - - | 36 |
| Postma   | - - - - - | 24 |
| White    | - - - - - | 23 |
| Berry    | - - - - - | 18 |
| McGill   | - - - - - | 18 |
| McKinley | - - - - - | 6  |
| Taylor   | - - - - - | 6  |



Tigers beat Atmore



#### TEAM SCORING

|       |     |             |     |
|-------|-----|-------------|-----|
| B. M. | 6   | Evergreen   | 24  |
| B. M. | 27  | Jackson     | 6   |
| B. M. | 7   | U. M. S.    | 18  |
| B. M. | 19  | Robertsdale | 0   |
| B. M. | 13  | Fairhope    | 19  |
| B. M. | 33  | Miller      | 7   |
| B. M. | 20  | Neal        | 0   |
| B. M. | 0   | Foley       | 14  |
| B. M. | 28  | Frisco City | 7   |
| B. M. | 14  | Atmore      | 13  |
| Total | 167 |             | 108 |





Postma Scores Against Fairhope



Touchdown Bound



WHOOPS!!





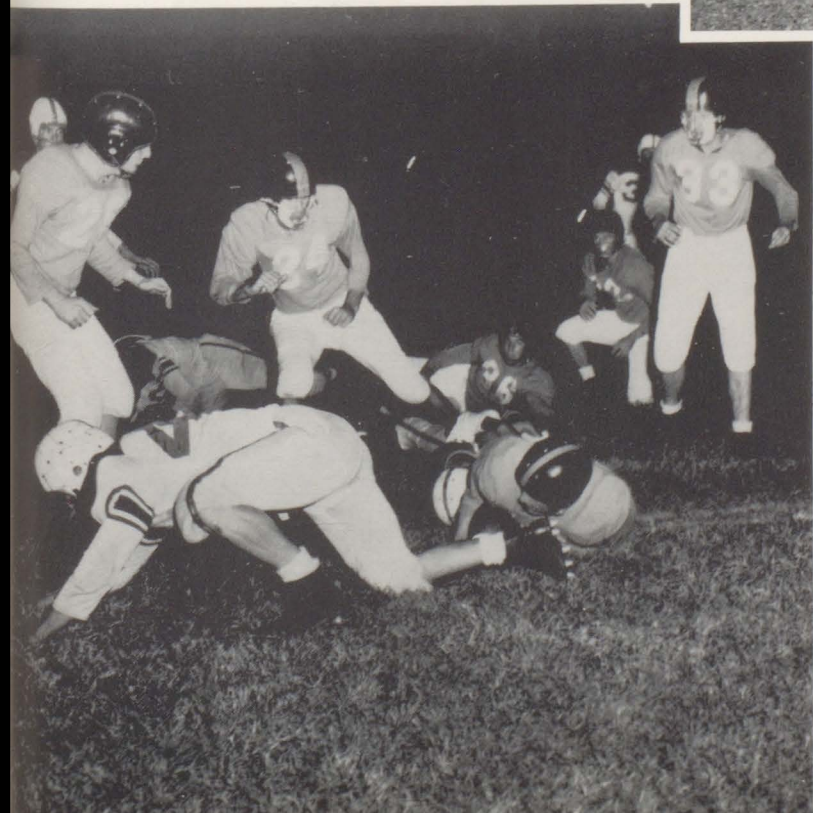


Headin' Fer Th' Hills



Ugh!!

Tackled





# Cheerleaders



"Eat um up Tigers"



1955 B. C. H. S. Cheerleaders  
Moonyene Stokley, Ruth Lambert, Nancy Friel, Pat Bell, Becky Sims, Margaret Holmes, Ernest Miller, Doyle Weekley.

A nice acrobatic trick by cheerleaders



Just posing





# Basketball — Varsity



## GAMES

### "A" TEAM

|       |     |             |     |
|-------|-----|-------------|-----|
| B. M. | 30  | Walnut Hill | 32  |
| B. M. | 29  | Robertsdale | 13  |
| B. M. | 40  | Fairhope    | 35  |
| B. M. | 38  | Foley       | 78  |
| B. M. | 45  | Baker       | 43  |
| B. M. | 37  | Foley       | 78  |
| B. M. | 53  | Robertsdale | 58  |
| B. M. | 43  | Grand Bay   | 28  |
| B. M. | 39  | Walnut Hill | 47  |
| B. M. | 38  | Fairhope    | 37  |
| B. M. | 47  | Grand Bay   | 45  |
| Total | 439 | Total       | 494 |

### "B" TEAM

|       |     |             |     |
|-------|-----|-------------|-----|
| B. M. | 23  | Walnut Hill | 32  |
| B. M. | 29  | Robertsdale | 13  |
| B. M. | 22  | Fairhope    | 14  |
| B. M. | 23  | Foley       | 44  |
| B. M. | 24  | Baker       | 29  |
| B. M. | 14  | Foley       | 39  |
| B. M. | 27  | Robertsdale | 35  |
| B. M. | 25  | Grand Bay   | 28  |
| B. M. | 21  | Walnut Hill | 10  |
| B. M. | 22  | Fairhope    | 25  |
| B. M. | 24  | Grand Bay   | 18  |
| Total | 254 | Total       | 287 |

## INDIVIDUAL SCORING

### "A" TEAM

|               |           |     |
|---------------|-----------|-----|
| Kenneth White | - - - - - | 29  |
| Henry Postma  | - - - - - | 76  |
| Harold Smith  | - - - - - | 65  |
| James Weekley | - - - - - | 3   |
| Fred Powell   | - - - - - | 48  |
| "Red" Wilkins | - - - - - | 37  |
| Johnny McGill | - - - - - | 126 |

### "B" TEAM

|                 |           |    |
|-----------------|-----------|----|
| Travis Fickling | - - - - - | 45 |
| Robert Harrell  | - - - - - | 9  |
| Jerry White     | - - - - - | 4  |
| Lloyd Brown     | - - - - - | 32 |
| Harold Hall     | - - - - - | 11 |
| Johnny McGill   | - - - - - | 8  |
| Fred Powell     | - - - - - | 6  |
| James Weekley   | - - - - - | 68 |
| "Red" Wilkins   | - - - - - | 13 |
| M. Weekley      | - - - - - | 44 |
| Larry Catrett   | - - - - - | 9  |
| Tommy Hawkins   | - - - - - | 1  |



# Junior Basketball

## "A" TEAM

|       |     |          |     |
|-------|-----|----------|-----|
| B. M. | 12  | Perdido  | 18  |
| B. M. | 16  | Perdido  | 24  |
| B. M. | 21  | Stockton | 36  |
| B. M. | 35  | Loxley   | 54  |
| B. M. | 22  | Foley    | 43  |
| B. M. | 17  | Loxley   | 45  |
| B. M. | 28  | Stockton | 12  |
| B. M. | 30  | Foley    | 32  |
| B. M. | 30  | Daphne   | 19  |
| Total | 211 | Total    | 283 |

## County Tournament

|       |    |        |    |
|-------|----|--------|----|
| B. M. | 21 | Daphne | 30 |
|-------|----|--------|----|

## "B" TEAM

|       |     |          |     |
|-------|-----|----------|-----|
| B. M. | 14  | Perdido  | 18  |
| B. M. | 19  | Perdido  | 26  |
| B. M. | 12  | Loxley   | 31  |
| B. M. | 9   | Loxley   | 28  |
| B. M. | 20  | Stockton | 10  |
| B. M. | 33  | Daphne   | 22  |
| Total | 107 | Total    | 135 |

## INDIVIDUAL SCORING

### "A" TEAM

|                 |           |    |
|-----------------|-----------|----|
| Don Becker      | - - - - - | 51 |
| Larry White     | - - - - - | 39 |
| Jerry Davidson  | - - - - - | 91 |
| Harry Fillingim | - - - - - | 0  |
| Harry Caprara   | - - - - - | 1  |
| Buddy Steele    | - - - - - | 4  |
| Jerry Ballard   | - - - - - | 0  |
| Jerry Trawick   | - - - - - | 23 |
| Huston Hadley   | - - - - - | 33 |

### "B" TEAM

|                    |           |    |
|--------------------|-----------|----|
| Buford Conway      | - - - - - | 11 |
| Jackie Byrne       | - - - - - | 8  |
| Terry Hammond      | - - - - - | 10 |
| Corlis Weekley     | - - - - - | 0  |
| Jerry Ballard      | - - - - - | 10 |
| Jerry Trawick      | - - - - - | 6  |
| Huston Hadley      | - - - - - | 6  |
| Tommy Strickland   | - - - - - | 12 |
| Hannis Duck        | - - - - - | 10 |
| Phillip Williams   | - - - - - | 23 |
| Harry Fillingim    | - - - - - | 2  |
| Harry Caprara      | - - - - - | 2  |
| Sidney Weatherford | - - - - - | 3  |
| Danliegh Corbett   | - - - - - | 2  |
| R. Cunningham      | - - - - - | 2  |















Advertisers<sup>☆</sup>





Name Brands Exclusively

Jarman  
Tru-Val  
Stetson  
Griffon

Arrow  
Florsheim  
Kaynee  
Hickok

*Electrical*



**BALDWIN**  
FURNITURE CO.

**APPLIANCES**

Frigidaire Appliances  
Lane Chest

Complete Home Furnishings  
Bay Minette, Alabama

RCA TV  
Maytag Washers



*Super Service*  
*at*  
*Beasley's*

First In Fine Foods

Bay Minette, Alabama





*Metzger*

BROTHERS

"Mobile's Accepted Style  
Center For Men"

Mobile

Prichard



*Your*



DEPENDABLE  
DRUGGIST

*Lambert's*

DRUG STORE

"Where Everybody Feels  
At Home"

Phone 3841

Bay Minette, Alabama

*latest fashions*



Ladies' and Children's  
Clothes Our  
Specialty

THE  
SMART  
SHOP

Phone 4211

Bay Minette

Anytime

Anywhere

Call

**BEN'S**  
TAXI

Dependable Service

Reasonable Rates

9102  
or  
5432

*Phone*



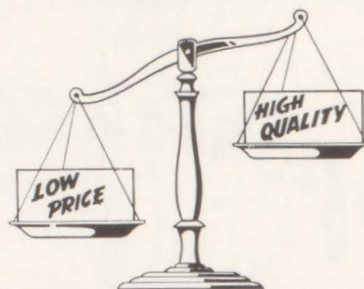


## Better Values

In Shoes  
For the Entire Family  
at  
**DAMRICH**  
SHOE CO.  
205 Dauphin St.  
Mobile, Ala.



H.B. CORBETT STORE



Free Delivery  
Phone 7330

# Good Luck



Whoever you are  
whatever you do



BOTTLED UNDER AUTHORITY OF THE COCA-COLA COMPANY BY

COCA-COLA BOTTLING CO., INC.

Mobile, Ala.

## MAY

SUPPLY COMPANY

Distributors of

Plumbing and Heating Supplies  
Pipe-Valves and Fittings

Mobile, Ala.

Pensacola, Fla.



## BARRON

DRUG STORE

"We Are Careful Druggists"

Phone 2821

Bay Minette, Ala.

## BAY MINETTE

AUTO PARTS

NAPA

104 East First St.

Bay Minette, Ala.

Day Phone  
7324

Night Phone  
7726

Phone 7480

## COX AND Mc GOWAN

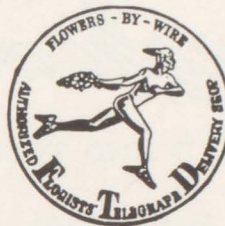
SHOE STORE

Footwear Headquarters

Star Brand-Rand

Poll Parrot

Bay Minette, Alabama



## BAY MINETTE

FLOWER SHOP

"Flowers For All Occasions"

## SERVICE

DRY CLEANERS

Pick Up and Delivery  
Service

Phone 7361

Compliments of

JOHN  
CHASON  
AND  
NORBORNE  
C.  
STONE

## BRADLEY'S

HARDWARE

Hardware - Building Supplies - Paints  
Guns and Fishing Tackle

Bay Minette, Alabama

Phone 7180





*Langham's*

LLOYD AND TOMMY

Phone 4791

Bay Minette, Alabama

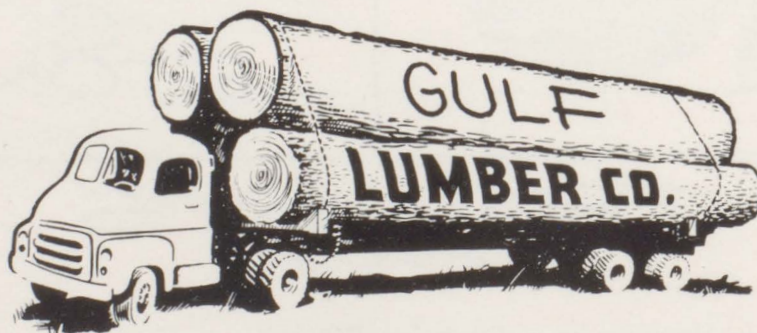
Compliments of

TELFAIR  
MASHBURN

STANDARD  
FURNITURE MANUFACTURING  
COMPANY

Bay Minette, Ala.

Compliments of





CHEVROLET

America's First Choice

For Over 24 Years

WILSON

CHEVROLET CO.

Court House Square

Bay Minette, Alabama

Dial 2611

Compliments of

PERRY

CREAMERY COMPANY

Tuscaloosa, Alabama

J.E. STILL

MOTOR COMPANY

"See Your Ford Dealer"

Bay Minette, Alabama



# RAY E. LOPER

LUMBER CO.

Yellow Pine Lumber and Poles Co.

Bay Minette, Alabama

When You're In Mobile  
Shop At

## HAMMEL'S

HAMMEL'S ADAM GLASS

Two Great Stores - One Great Downtown Shopping Center

Royal Street - Dauphin Street - Conti Street

## STUART'S

CLEANERS

"We Do It Right"

Bay Minette, Alabama

Phone 7146

New - Used Cars  
Complete Radiator Service  
Authorized Willys(Jeep) Dealer

## LITTLE

MOTOR CO.

Phone 7144

Bay Minette, Alabama  
Pure Oil Products

## BELL

INSURANCE AGENCY

and Real Estate

Insure With Us We Give Service

209 East First Street  
Bay Minette, Alabama  
Phone 7236

THE

## STOCKTON

CANDY COMPANY

Serves Your School



"For the Best Seafood  
Anywhere"  
It's

**PALMER'S**

CAFE

On the Causeway  
Box 8 Daphne, Ala.  
Phone HE 8-9952

Compliments of

**MOBILE**

FIXTURE COMPANY

**RADCLIFF**

GRAVEL COMPANY, INC.

Ready-Mix Concrete  
Radmix Asphalt  
Sand - Gravel - Shells-- Mortar  
Radstone Block

Phone HE 3-5585  
P.O. Box 108  
Mobile, Alabama

**BIDGOOD**

STATIONERY COMPANY

"Everything For Your Office"  
School - Engineering  
Drafting Supplies  
Blue Prints - Photostats

67 St. Francis St.  
Phone HE 2-0518  
Mobile, Alabama

Agent:  
Mayflower Nation-Wide Moving  
Service

**ABB'S**

MOVING SERVICE

Moving - Storage - Packing  
Crating  
50 N. Water St. HE 3-1655  
Mobile, Ala.  
ABB WOOLDRIDGE, JR.

**BALDWIN**

TIRE STORE

Goodyear and General  
Electric

BAY MINETTE AND FOLEY

**THOSS**

SPORTING GOODS

Mobile's Oldest Sporting Goods Store  
Over 69 Years In Business  
MacGregor and Rawlings Athletic Equipment  
Spot Built Shoes

76 Dauphin St.

HE 2-5624



Whatever Your Needs - Automotive Wise

Depend On Hadley's

Sales - Service

Dodge - Plymouth

# HADLEY MOTOR CO.

Dodge "Job-Rated" Trucks

## MALONE

PONTIAC MOTORS



SALES  
AND  
SERVICE

Friendly Courteous      GMC - Pontiac  
210 Hoyle Ave.      Sales and Service  
Bay Minette, Ala.

Telephone 6461 or 7746

## BUILDERS

HARDWARE & SUPPLY COMPANY

Hardware and Building Supplies

Everything For Farm and Home

Bay Minette, Alabama





## STACEY'S

DRUG STORE

"Where the Crowd Meets"

Bay Minette, Alabama

## RUTZ

MUSIC & PIANO SALES CO.

270 Dauphin St.  
Phone HE 8-1583  
Mobile, Alabama

Everything Musical

Kodak Supplies

## WOJOHNS

16 So. Conception  
Mobile

Developing, Printing,  
and Enlarging

Compliments of

*T.C. Hand*

Compliments of

## CAIN'S

WATCH SERVICE

## S. KAHALLEY'S

Quality - Service - Courtesy

Clothing and Shoes For the  
Entire Family

Phone 4982

Bay Minette, Ala.

## RILEY-STUART

SUPPLY CO., INC.

Building Supplies  
Hardware

Virginia St. At Conception  
P.O. Box 1185

Phone 37465  
Mobile, Alabama



See "Science Fiction Theatre" Every Sunday 6 P.M. Channel 5  
"Ramar Of The Jungle" Every Wednesday 7 P.M. Channel 10

LET US HELP



*Your Money*

*Baldwin*

COUNTY BANK

Bay Minette, Alabama

Congratulations, Seniors



Compliments of

*Bacon McMillan*

veneer MANUFACTURING COMPANY

Stockton, Alabama

T.W. MITCHELL

J.C. NALL

MITCHELL & NALL

GENERAL CONTRACTORS

Bay Minette, Alabama

P.O. Box 344

Phone 4224

Compliments of

W.R.  
STUART

PROBATE JUDGE

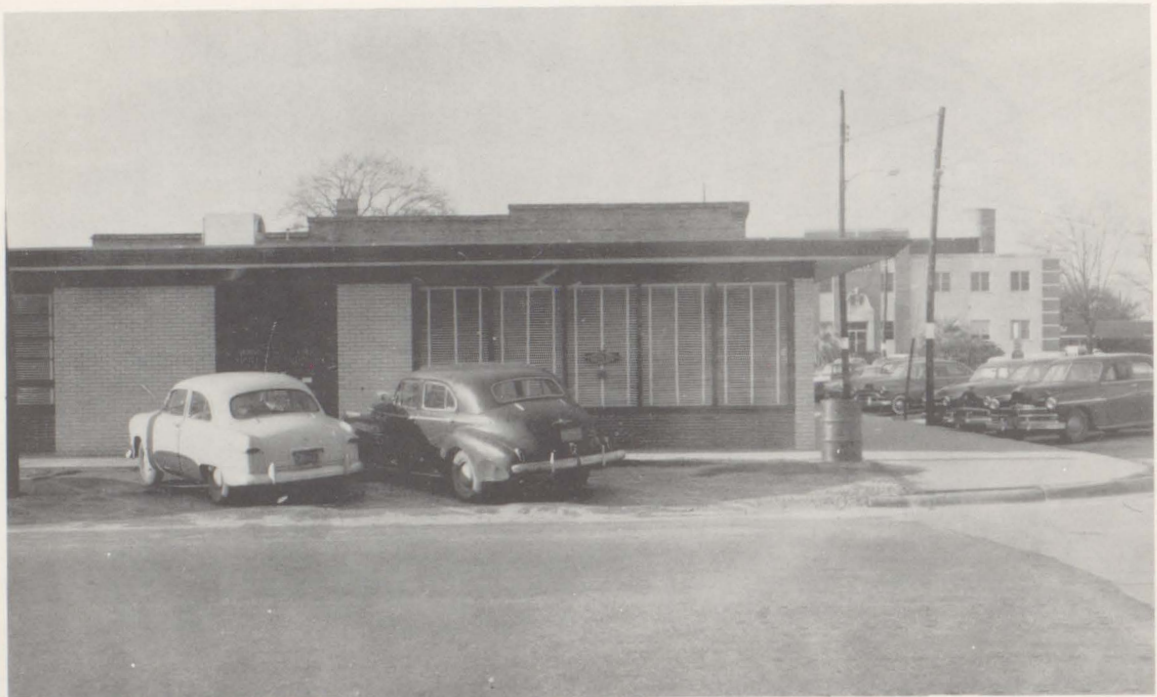
Compliments of

W. C.  
BEEBE  
*and*

F. G.  
SWEARINGEN

FIRST NATIONAL BANK OF BAY MINETTE

Baldwin's "First" National Bank

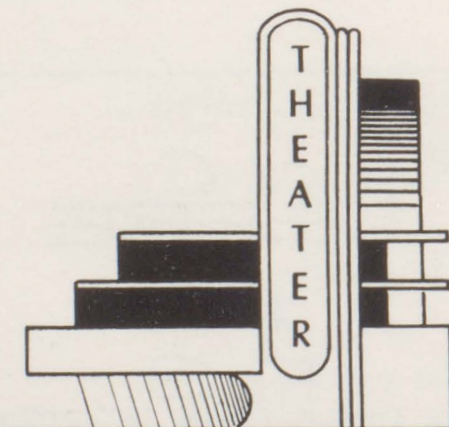


REX

THEATER

Always Anxious to Please  
For Fun and Recreation

See a Movie



IS OUR  
FIRST  
THOUGHT

NOONAN'S

GULF SERVICE

GEORGE "BOOTSIE" NOONAN

Phone 7261



COMPLIMENTS OF

NEWPORT  
INDUSTRIES  
INCORPORATED

Coaches Jennings and Williams  
Feed Their Away-From-Home  
Tiger Teams

at  
**SPANISH  
FORT**

Why Don't You

Private Dining Room For

Banquets Up to 50 Guests

Famous For Fine Foods

Compliments of

**GRADY**

BUICK COMPANY

Sales and Service

Bay Minette

Mobile

Ph. 7619

Ph. HE 27545

Good Luck, Seniors

Compliments of

*G. F. Stevenson*

Compliments of

*Taylor Wilkins*

**THE  
BALDWIN TIMES**

Quality Printing  
Office Supplies  
Office Furniture

Phone 2511

Bay Minette, Ala.



Compliments of

"BIG ED"  
TUNSTALL

TAX ASSESSOR

Compliments of

*R. J. Robertson*

J. E.  
JOHNSON

TV SERVICE

"On All Makes and Models"

Any Time Day or Night

Phone 3893

Compliments of

BAY

MANUFACTURING CO.

N. E. GALLAHAN

Compliments of

*M. H. Wilkins*

TAX COLLECTOR

Compliments of

J. A.  
ERTZINGER  
AND  
SON

Machinery  
Contractor's Equipment

TURNER  
SUPPLY CO.

250 North Royal Street

Mobile, Alabama

Industrial and Electrical Supplies

Steel Products

SMITH'S

BAKERY

Sunbeam Bread

"The Bread You Need For  
Energy"!

Compliments of

THE  
FABRIC  
MART

MOBILE

Compliments of

*Hastie's*

STORE

Stockton, Alabama

For All Graduation Gifts  
Shop at

GERHARDT'S

Nationally Known Luggage  
and Gifts - Since 1913

Free 23-Karat Gold  
Monograming  
Free Gift Wrapping

AZEALIA BRAND

"Best In the Land"

Ice Cream, Grade "A" Pasteurized and  
Homogenized Milk

Delivered to Your Favorite Grocer Daily

*Fairhope*

ICE & CREAMERY CO.

Fairhope, Alabama

Serving the Public Since 1908



Compliments of

*J. B. Blackburn  
and  
Jimmy Owen*



Use  
MALBIS  
BAKERY  
PRODUCTS

Consistently  
Good

None Finer

Compliments of

R. C. "DICK" SMITH

Compliments of

*Olen's*

DEPARTMENT STORE

Bay Minette, Ala.

GREER'S

FOR GROCERIES

Serving Mobile, Baldwin and Clark Counties

Compliments of

*Mrs. Alice J. Luck*

Compliments of

*McCartha's*

DEPT. STORE

Bay Minette, Ala.



*Nutritious*  
DAIRY PRODUCTS  
by

DAIRY FRESH

Home Delivery

*A Friend*

Wishes You

the Best of Luck,

Seniors



BRISTOW'S

DRUG STORE

Duncan Miller Crystal  
Haviland China

Bay Minette, Alabama

Compliments of

GAYFER'S

*Autographs*

1971-1972

1971-1972

1971-1972

1971-1972

1971-1972

1971-1972

1971-1972

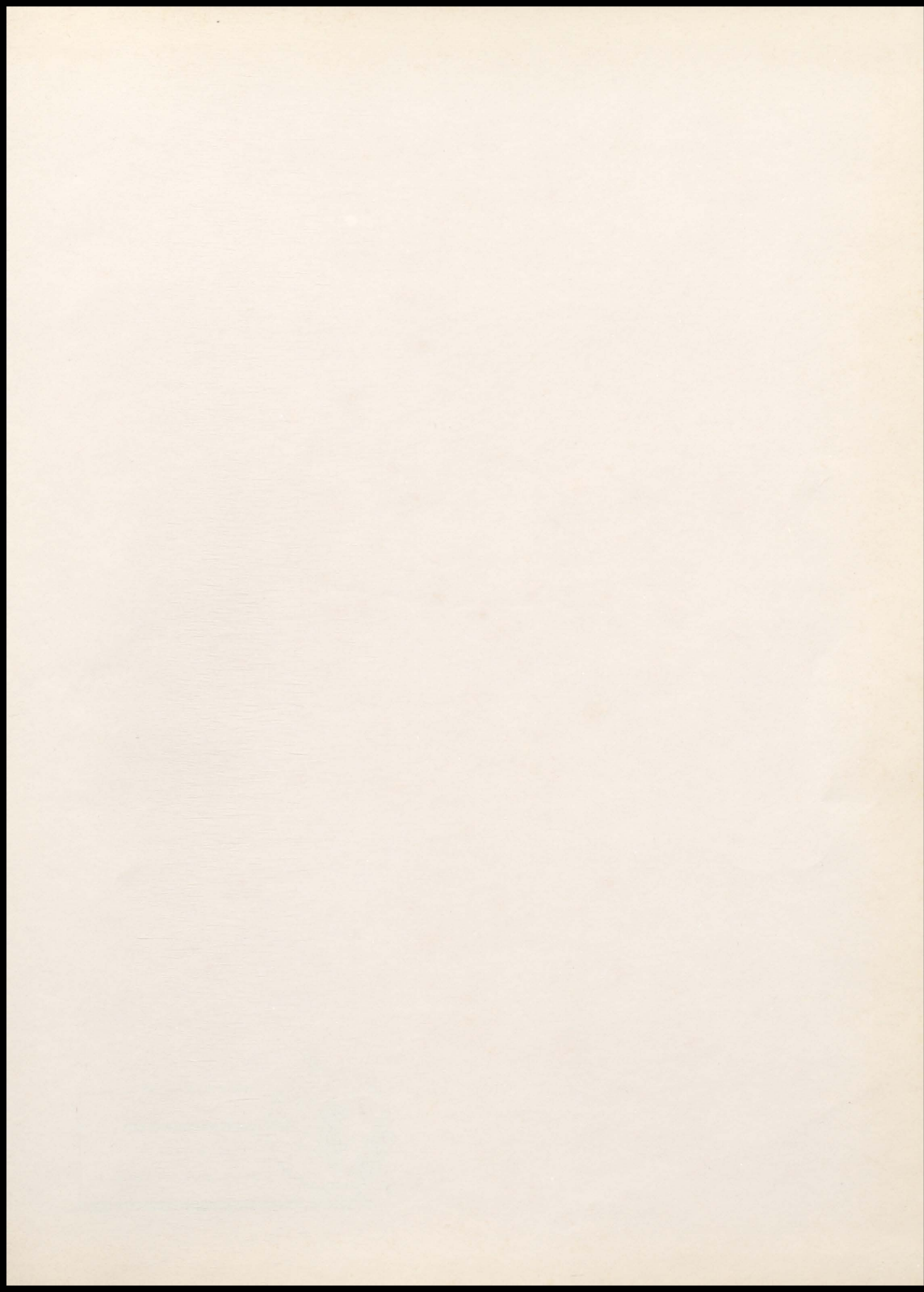
1971-1972

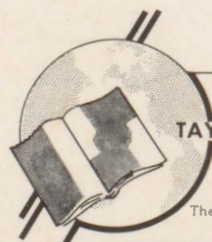
1971-1972

1971-1972

1971-1972







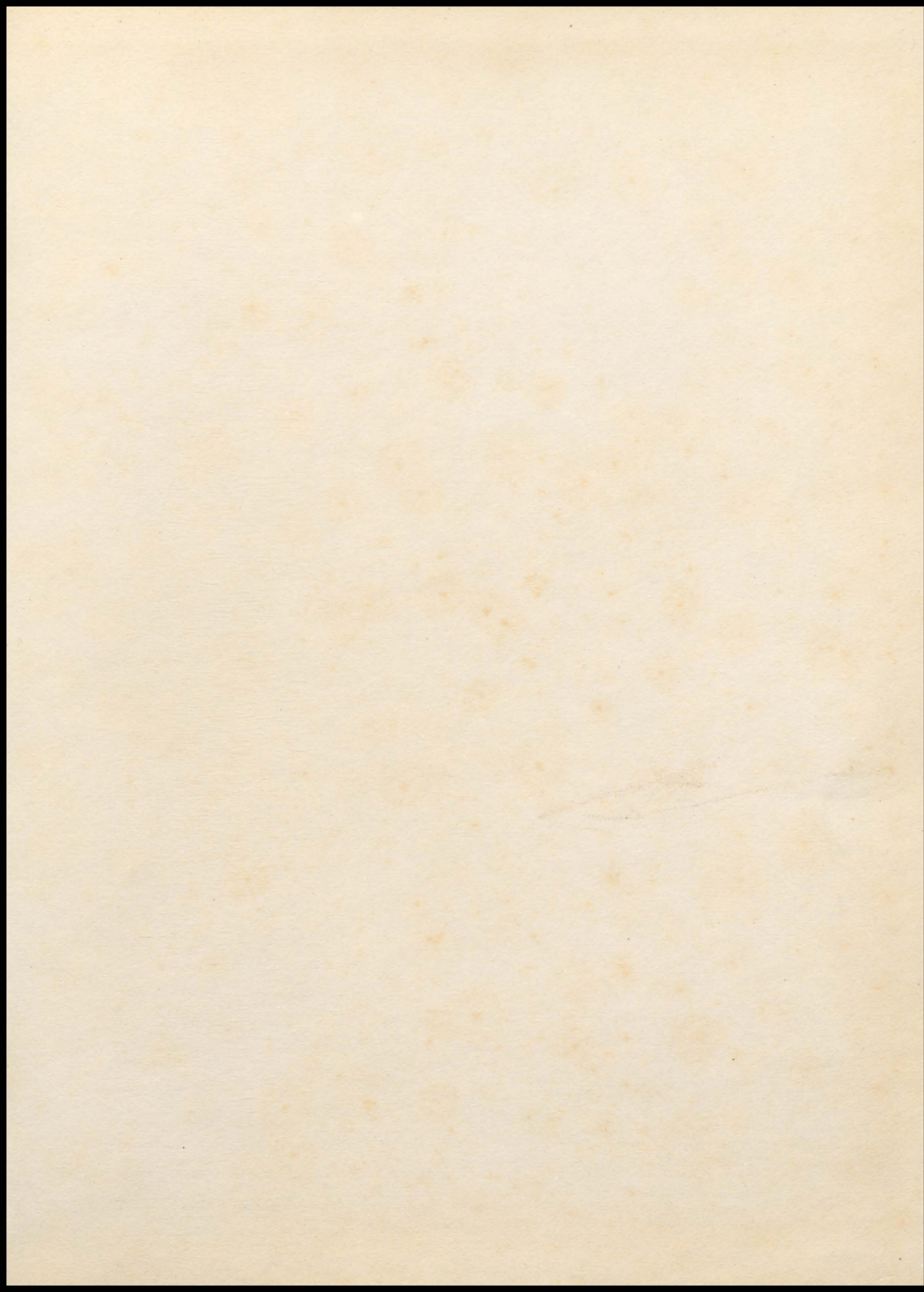
LITHOGRAPHED BY

**TAYLOR PUBLISHING CO.**

DALLAS • TEXAS

The Best Yearbooks are TAYLOR-MADE









John E. Chason  
Alvin Crane  
Bobby Taylor

James A. Wadley  
Janice King  
Hermon Faulkner  
James A. Wadley  
James A.  
Nancy Durant  
Floyd Jackson  
Linda  
Margaret Holmes

Ray Crane  
Elizabeth  
Vivian Schaefer  
Pauline Eubank  
Claine Smith  
Johnnie McGill  
Walter Hite  
Frank Stump  
Eugene  
Jerry Max

Barbara Lynn  
Kenneth W. W. Wadley  
Ben Wadley  
Wade Wadley  
Murray Bryant  
Emory  
Stedley

Shirley Ridgway  
Pauline Eubank  
Claine Smith  
Johnnie McGill  
Walter Hite  
Frank Stump  
Eugene  
Jerry Max

Clyde Wilson  
Sarah Allen  
Billy Joe  
Tominear  
David I can  
Bonnie Newton



Sarah Allen  
Barbara  
Jo-Anne Hadley  
Barbara West  
Sylvia M. Hill  
Myrtle Lee  
Sylvia Massey  
Willie Miller  
Mattie Jean S. Trichland  
Mike Edwards  
Louise Johnson  
Day Lattie Graham  
Cecil Francis  
Herbert Cooper  
John Baggett  
Shirley White  
Stokely Emma  
Becky Sims  
Emmett Earl  
Alma Cheston  
Mark Lemelle  
Paul McNeil  
Harvey Horne  
Hunny Gordon  
Mitchell Thornley  
Anne Reid  
Alma Reid

Anne Reid



