

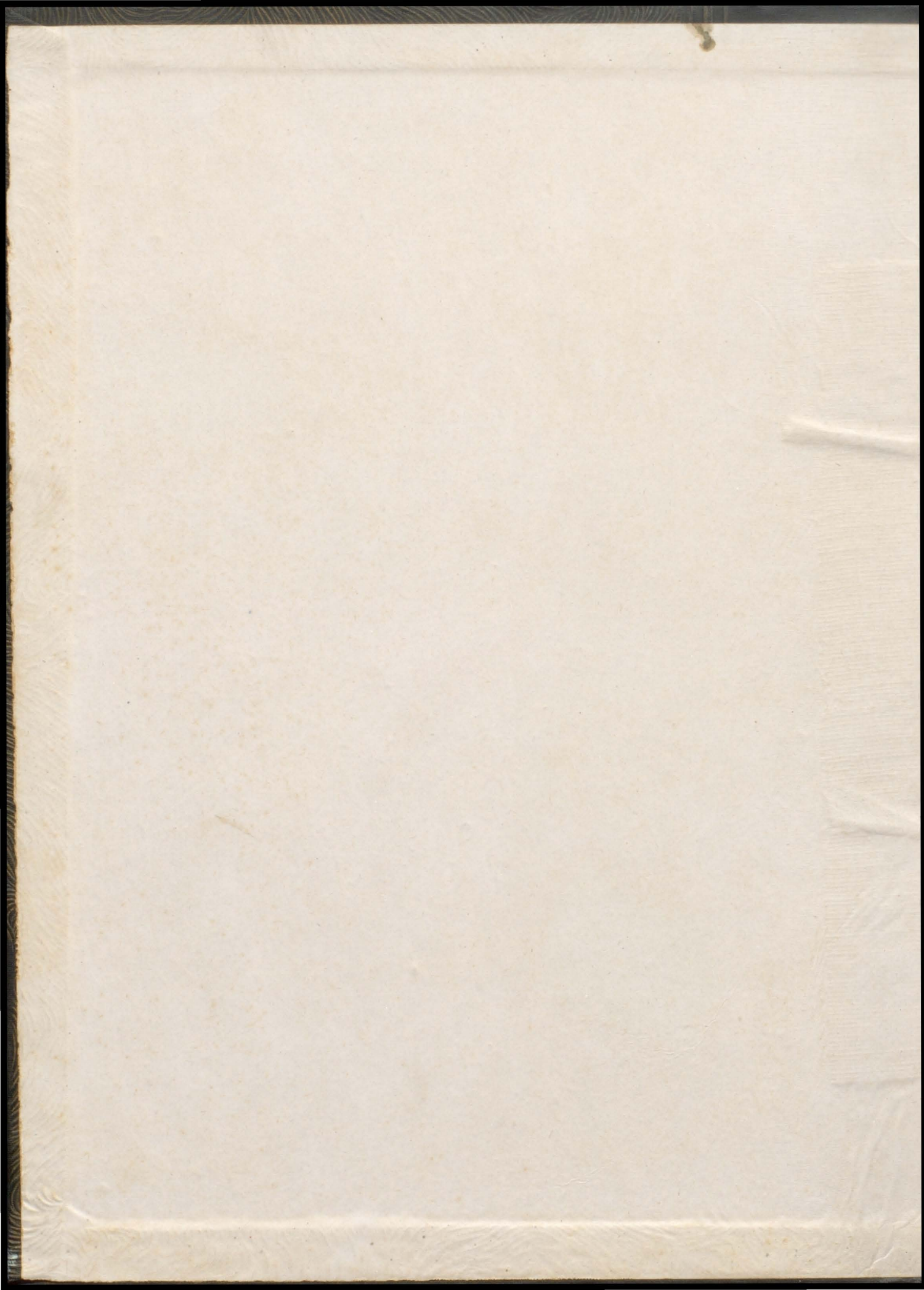


The

1947

BALCHDALLA

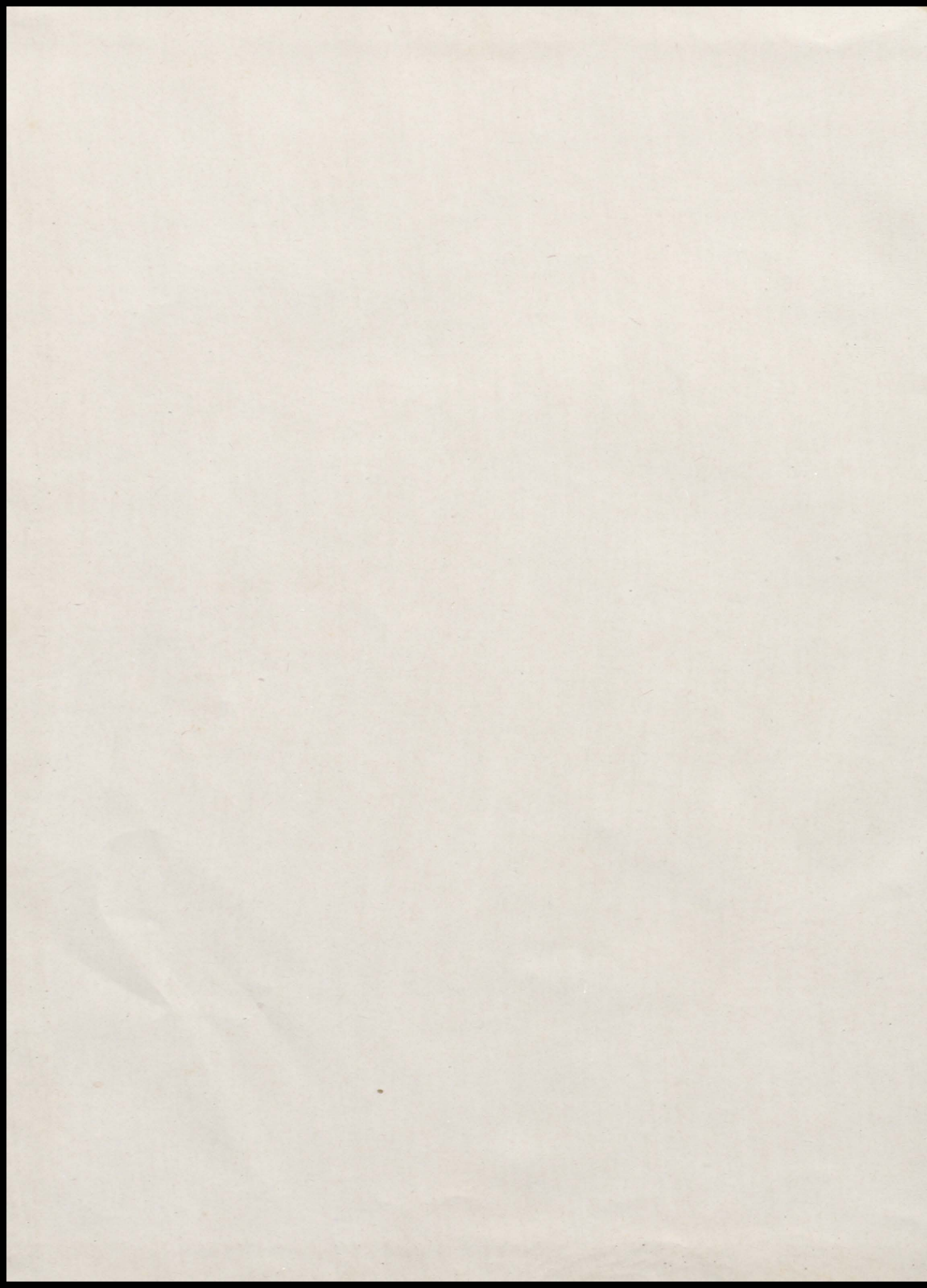














# To Portray



# School Day Melodies



# The Beta Club Presents The





# BALCOALA

*which contains*

for it's readers, a portrayal of student life at Baldwin County High School through pictures and expressions that illustrate the phases of school work, school activities, and school administration. . . . .

-- of --

# 1947



# and DEDICATES This

Because he has devoted his life and his services to the building of a Baldwin County school system that has gained recognition among the nation's greatest educators and rank among the one hundred best school systems of the United States, Superintendent S. M. Tharp is herewith respectfully accorded the dedication of this volume, the Balcoala of 1947.

Mr. Tharp was graduated from the University of Alabama in 1909 after which time he came to Bay Minette and served as principal of the school for nine years. In 1918, Mr. Tharp was appointed Superintendent of Education in Baldwin County and his twenty-nine years of service in this capacity has been filled with untiring efforts to make our schools fulfill their ultimate aim.

At the beginning of his administration there were no accredited schools in Baldwin County; today Baldwin County has four white and one colored accredited high schools which graduate approximately 200 students each year from a total school enrollment of over 9600. This large enrollment has been brought about by a school transportation system of approximately sixty buses which enables every white child in Baldwin County to have the opportunity to complete his studies in an accredited high school if he so desires.

To date there are 26 white and 26 colored schools in Baldwin County which employs approximately 300 teachers as compared to a teaching force of 100 in 1918. All of these white schools and nearly all the colored schools have either been built, added to or financed during his administration. The over-all expense of operating these schools during this scholastic term will amount to \$750,000 as compared to less than \$100,000 spent on the school program at the beginning of Mr. Tharp's twenty-nine years service to the schools of Baldwin County.

# VOLUME

To



Mr. S. M. Tharp, Superintendent of Education, Baldwin County, Alabama.

FOR FAITHFUL Service

RENDERED TO THE SCHOOLS of BALDWIN COUNTY



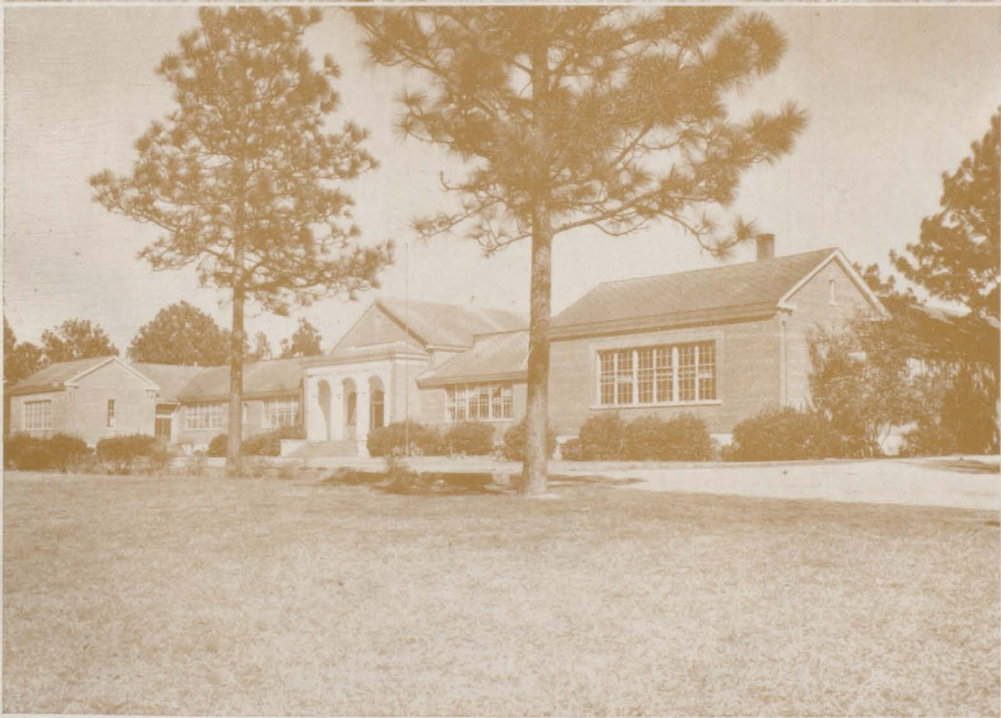
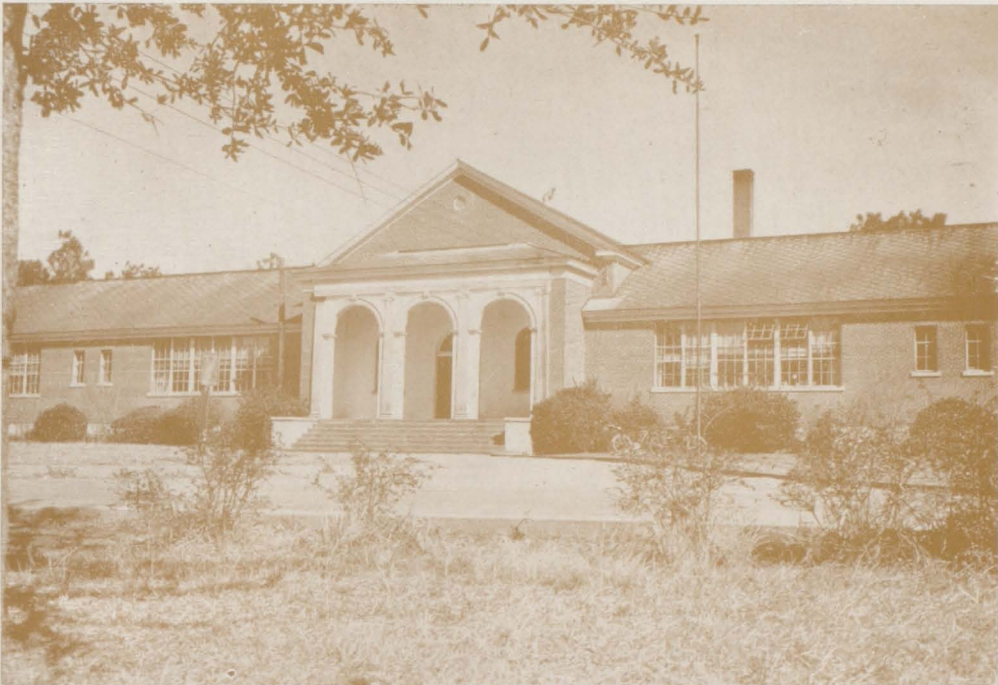


High School and Vocational Building

of our STUDENTS



# our BUILDINGS



Bay Minette Grammar School

# our CAMPUS

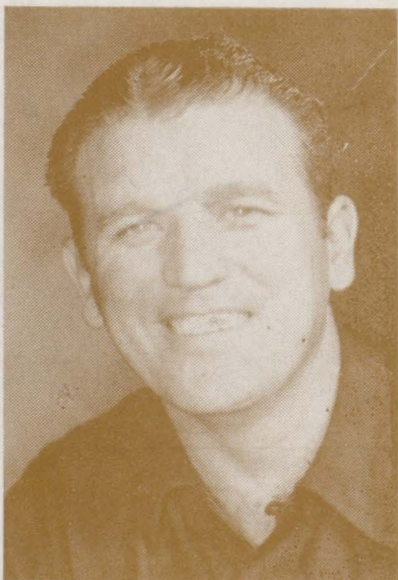


# and Our

# F A C U L T Y



C. V. Daniels, Principal

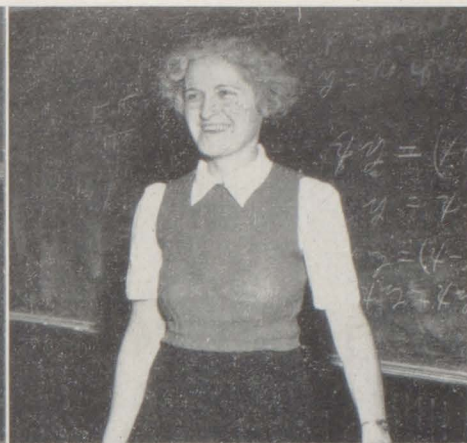


C. W. Pugh, Asst. Principal of  
High School



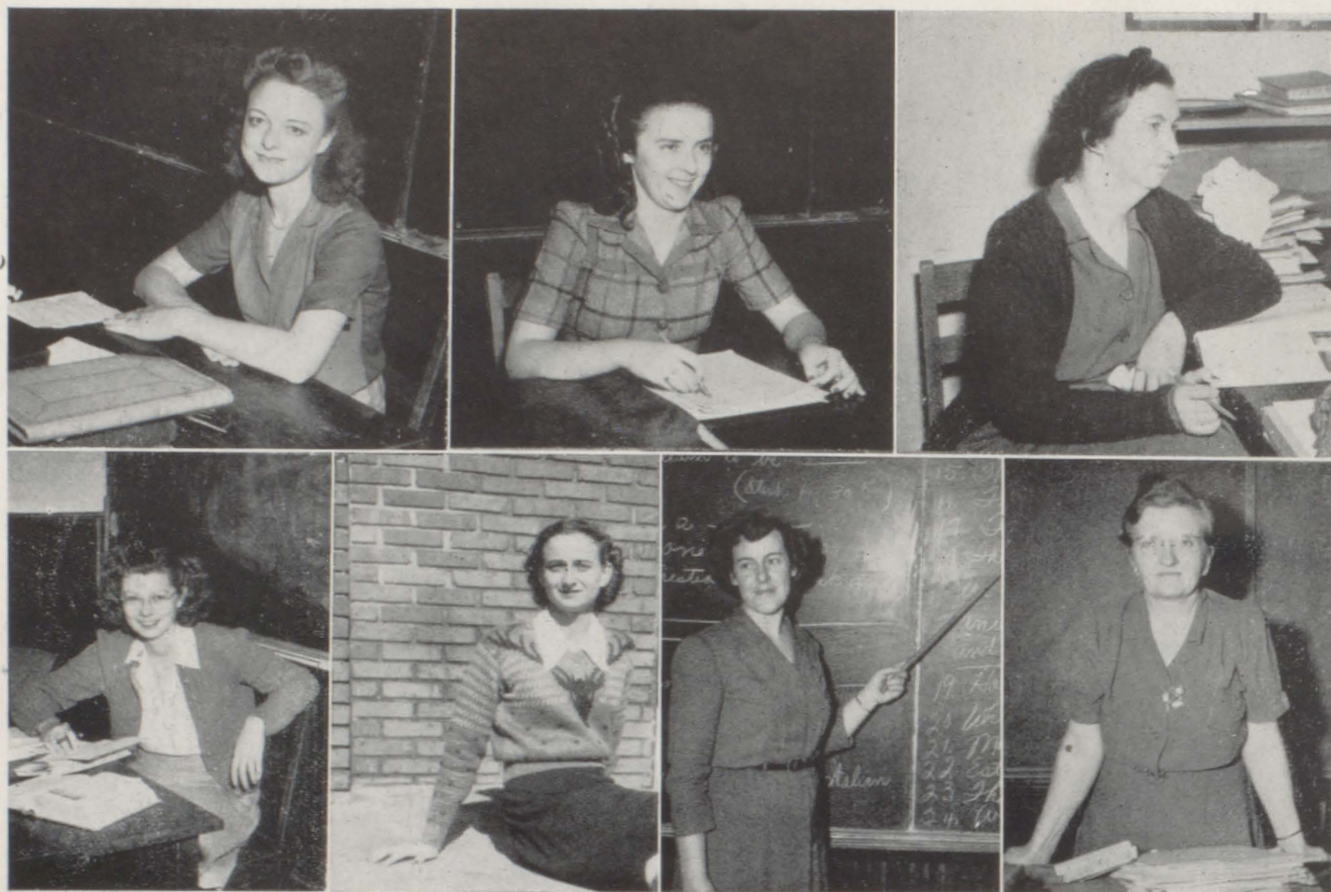
B. M. Simmons, Asst. Principal of  
Grammar School





First Row: Mrs. West, Mrs. Smith, Miss Hinton. Second Row: Miss Northcutt, Mrs. Bryant, Mrs. Stough. Third Row: Miss Leonard, Mr. Pugh, Mrs. Kern. Fourth Row: Mrs. Young, M. Estes, Mrs. Busbee.





First Row: Mrs. Durant, Miss Chum, Miss Matthews. Second Row: Miss West, Miss Davis, Mrs. Terrill, Mrs. Milam



Eloise Howell, Secretary



Mr. Charlie Maricle, Janitor





Top: High School Faculty.

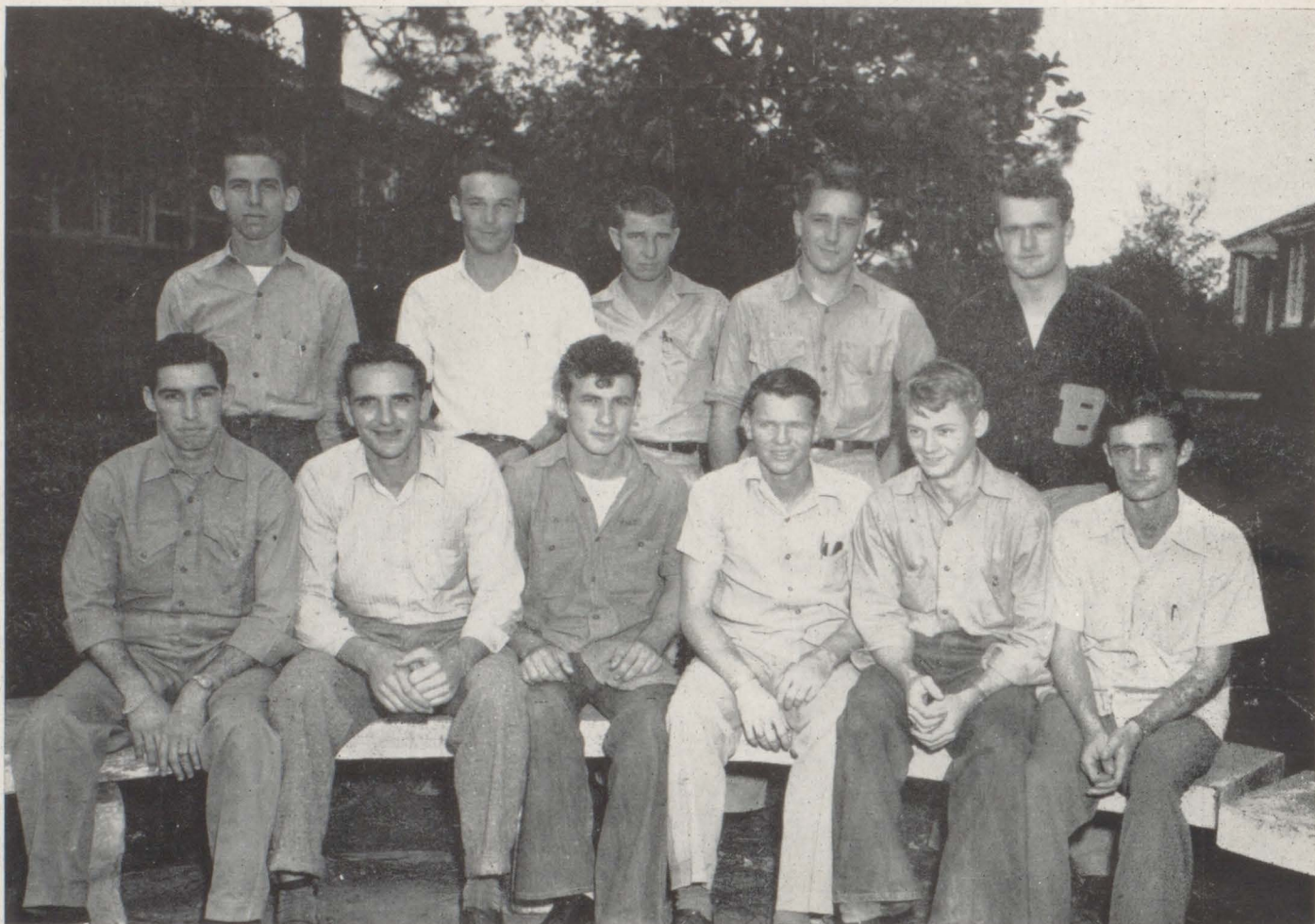
Bottom: Grammar School Faculty

*GRAMMAR SCHOOL FACULTY*

Back Row: Mrs. Long, Miss Perry, Mrs. Tucker, Mrs. Jordan, Miss Chunn, Second row: Mrs. Grisham, Mrs. Quinley, Miss Hutchinson, Mrs. Zehner, Mrs. Hall. Front row: Miss McMillan, Mrs. Feldt, Mrs. Beebee, Mrs. Pruitt, Mrs. Hall, Miss McLeod.

united with the Return





## of our Veterans made

Back Row: Forrest Weekley—Navy; Darrington Helton—Navy; Robert Emanuel—Army; Lanston Hedge—Marine Corps; Jerry Davidson—Navy; Front Row: Randolph McGowan—Marine Corps; Charles Taylor—Navy; Hunter Hall—Navy; Mason Bush—Army; Kco Green—Army; Ben Vines—Army; Not in picture: Pete Duffee; Quincy Waters; Gordon Mothershed.

The members of the student body are happy that our veterans are once again with us. They missed you while you served so gallantly in the armed service of our country and they are proud that you feel the great responsibility of finishing your high school education. B.C.H.S. veterans have had many varied experiences in their services in the navy, the army, and the marine corps. Some left our school as early as when they were in the tenth grade and their time of services ranged from six months to three years. They have walked on the soils of all the continents of the earth in their travels to and from the Americas, Africa, Japan, Italy, France, Germany, and the many Islands of the Pacific. The Balcoala staff is privileged to accord you, our veterans, with this space in our school annual.

## our school days complete





Langston Hedge fearfully watches the health nurse give Herman Harville a shot.

# ACTIVITIES





Buford Aaron, President

# The S T U D E N T

Realizing the need for a more effective form of democratic self-government, the student body and faculty members "got their heads together" and organized the student government association at B.C.H.S. After a "heated" but fair election a corps of officers and representatives were elected; they have worked hard to establish a system of government that would help the entire student body. A constitution is in the making, a demerit system has been adopted, and a student court appointed and other activities have been carried out that have helped the morale of our school. The sponsors for the council are

Mrs. Bryant and Miss Davis

# C O U N C I L

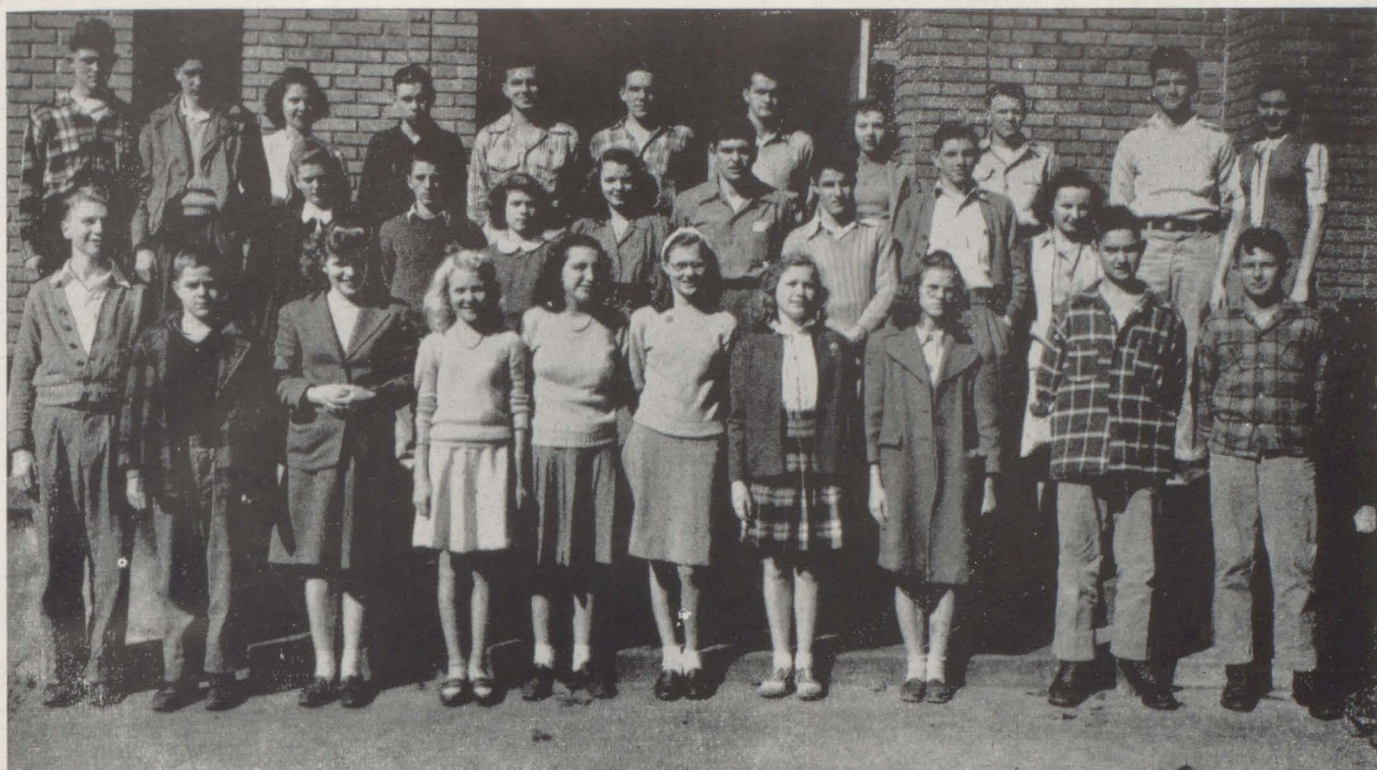
LaMerle Wood,  
Vice President

Althea King  
Secretary

Bill Fail  
Treasurer







*Top: Student Council Representatives. Bottom: Student Court.*

Back Row: Gene Bryant, Frank Burt, Melba Hubbard, Marion Buxton, Cecil McMillan, Tommy Page, Jerry Davidson, Mary Alice White, Mason Bush, L. T. Weekley, and Joline Russell. Center Row: Sue Harris, Brooks McDill, Anne Willis, Betty Reid, Edward Barlow, Thomas Boone, Shelby Langston, and Maey Nell Powell. Front Row: Calvin Coots, Pete Gilliard, Yevonne Quinley, Barbara Jean Grimes, Jean Gilbert, Anna Lyle West, Anne Humphries, Larie Marie Postom, Pat Baggette, and Sammy Pipkins.

Left to right: Allen Hayes, Secretary; Miss Hunton and Miss Matthews, Sponsors; Tom Kelly; Edward Barlow, Judge; William Neal Crosby, Gordon Flowers, Sterling Griffin, and Sara Jo Fagan.





Whit Stuckey, Editor

The

1  
9  
4  
7

# B A L - C



George Stuart,  
Business Manager



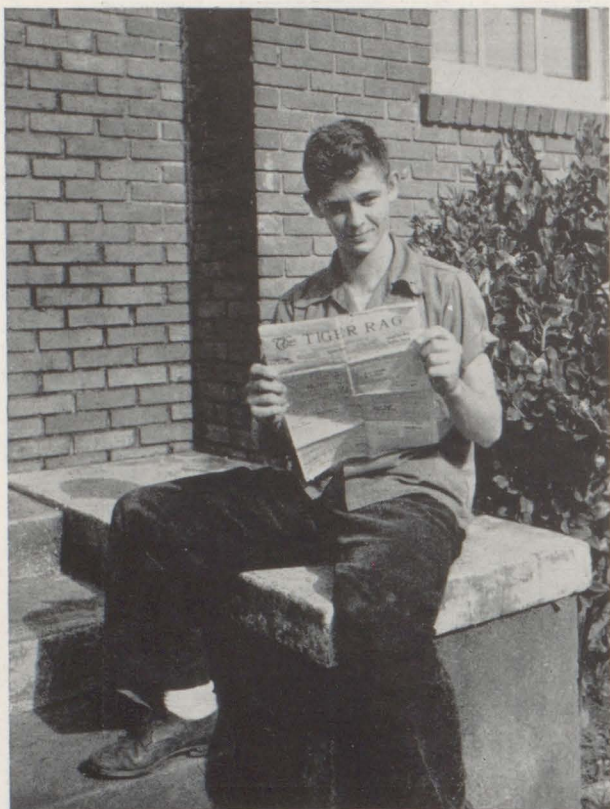


# O - A L A

## *S T A F F*

Editor .....	Whit Stuckey
Business Manager .....	George Stuart
Finance Chairman .....	Mary Alice White
Advertising Manager .....	Carolyn McMillan
Sales Manager .....	Francis Mancini
Senior Class Editor .....	Buford Aaron
Junior Class Editor .....	Bill Fail
Underclassmen Editor .....	Thom Hooper
Grammar School Editor .....	Glennys Thomley
Organization Editor .....	Carrie Jean Byars
Spots Editor .....	Glenn Hooper
Features Editor .....	Jocelyn Tunstall
Photographer .....	Gordon Flowers





## Staff

Editor in Chief .....	Thomas Hooper
Assistant Editor .....	Robert Wilson
Receiving Editor .....	Tommy Page
Business Manager .....	Grey Cane
Advertising Manager .....	Tom Kelly
Social Editor .....	Carrie Jean Bryars
Class Reporter .....	Carolyn Taylor
Club Reporter .....	LeMerle Wood
Sports Reporter .....	Willard Cabiness
Alumni Reporter .....	Charles Taylor
Snooper .....	

Grey Cane

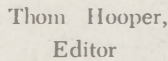
Business Manager

# THE

# TIG







**E R A G**

THE TIGER BAY MINETTE, ALABAMA, OCTOBER, 1941

The F. F. A. and F. H. A. had a hayride to Hawkins Friday, October 4, on a trip. They roasted weiners and coffee and played games. Everyone had such time that they didn't notice the hay.

At the first meeting Camera Club the new were elected as follows: Whit Stuckey, vice; George Stuart, secretary; Jean Bryars, treasurer. Sixteen new members voted in unanimously. Fourteen old members.

### Help Needed To Get Out Balcoala

Students interested in helping on the Balcoala staff, please turn your names in to Whit Stucke, editor. The staff will appreciate the effort of any BCHS student.

One of the highlights of the game was Scotty Byrnes' pass which he threw 40 to 50 yards.

Outstanding running was displayed by Cebanias and Stinson. Good clean tackling was displayed by Davidson and Page.

The chapter initiated 40 green hands on Wednesday night, Sept. 25, which brought the membership up to 75. All members are enrolled in vocational agriculture except two — Alfred Jones and Jimmy Jags.

10





Nolan, can you take a letter on the "knee"?



Falling in line for chow.



Sweet Melodies



Coping in the Library. eh?

# Students at Work

Opposite page: If you  
by numbers, you won't  
miss a picture.

## and

## At Play







*forbidden territory*

*Santa Claus comes but once a year*

*Our Photographer*

*Teachers reading the "Tiger Rag"*

*Big Deal*

*Just Jitter-Bugging*

*B.C.H.S. Monkey*

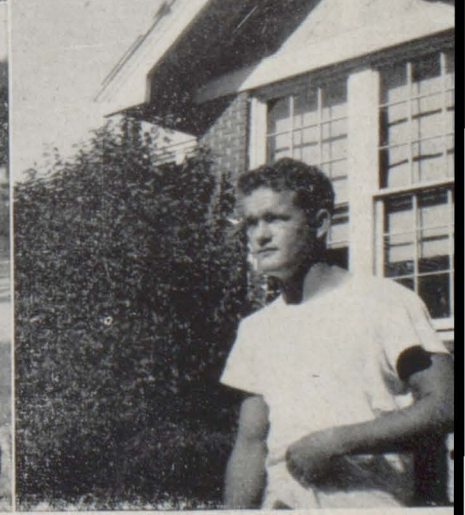
*Racing for dinner*

*They call it Dancing*

*Hugging and Chalking*

*Milk makes the difference*













Prexies (or stoogies): Dickman, F.F.A.; Hooper, Beta Club; Stuckey, Camera Club;  
Carr, G.A.A.; Duck, F.H.A.; Hedge, "B" Club.

# ORGANIZATIONS





Officers: Mancini, Stuckey,  
White and Hooper



Sponsor; Davis, State Officers;  
Hollis, Hooper and Green.

# BETA CLUB

The Beta Club has had a successful year under the leadership of its president Glenn Hooper who "knocked down" state honor as Ala. President. Whit Stuckey (president of vice) served as chairman of the executive committee while Frances Mancini kept the records and "Sally" White dished out the money. Besides "raking" in a mass of new members they "fish-fried" with their fellow Betas at Fairhope, published this volume which cost over \$1000, presented a cup to the most sportsmanlike player of the county basketball tournament, made a contribution to the national scholarship fund and sponsored the B.C.H.S. May Queen Election. Fourteen went to Birmingham to the state convention and had a wonderful time. . . . .



# MEMBERS

## *Sr. III*

Buford Aaron  
Glenn Hooper  
Althea King  
Gordon Flowers  
Fred Mason Bush  
Francis Mancini  
Carolyn McMillan  
Grace Patrick  
Minnie Lou Rotch  
George Stuart  
Whit Stuckey  
Glenys Thomley  
Jocelyn Tunstall  
Mary Alice White  
Edith Smith  
J. D. Long  
Forrest Weekley

## *Sr. II*

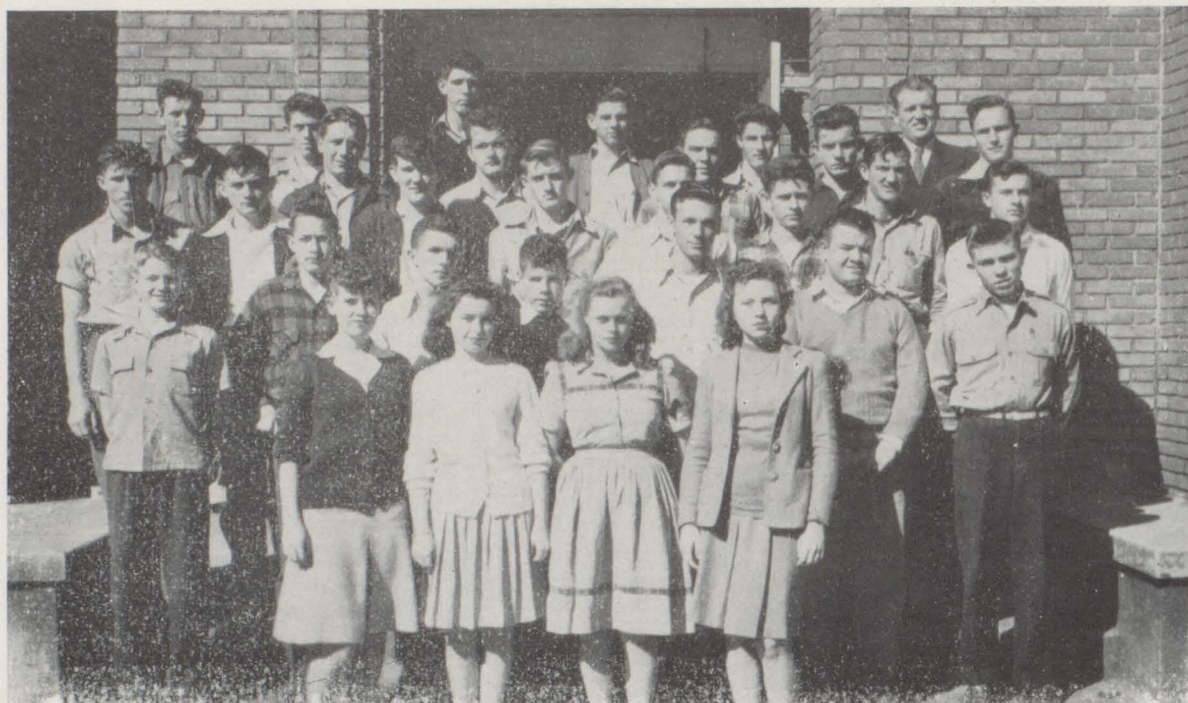
Carrie Jean Bryars  
Marion Buxton  
Bill Fail  
Thom Hooper  
Opal Johnson  
Cecil McMillan  
Sandy McGill  
Mona Murphy  
Oliver Ward  
Ann Steedley  
Carolyn Taylor  
La Merle Wood  
Annie Lee Ammons  
Evelyn Richardson  
Dovie Godwin  
Melba Hubbard  
Lou Gene Kilcrease  
Jeannine Presley  
Clara Roley  
Jamie Harris  
Olive Henley

## *Sr. I*

Edward Barlow  
John Conway  
Betty Jean Duck  
Jack Morris  
Robert Phillips  
Mary Nell Powell  
Joline Russell  
Betty Trawick  
Doll Waters  
Leola Yarbrough  
Carolyn Thomley  
Erma Clyde Gentry  
Nellree Smith  
Helen Smith  
Mildred Roley  
Barbara Richardson  
Josephine Garner  
Myrtis Carr  
Betty Nell Byrd  
Alene Boulter







Mr. Pugh's little darlings

# “B” CLUB

President	Burl Hedge
Vice President	Willard Cabaniss
Secretary	Jerry Davidson
Treasurer	Jerry Davidson
Reporter	George Stuart
Sponscr	Mr. Pugh

## MEMBERS

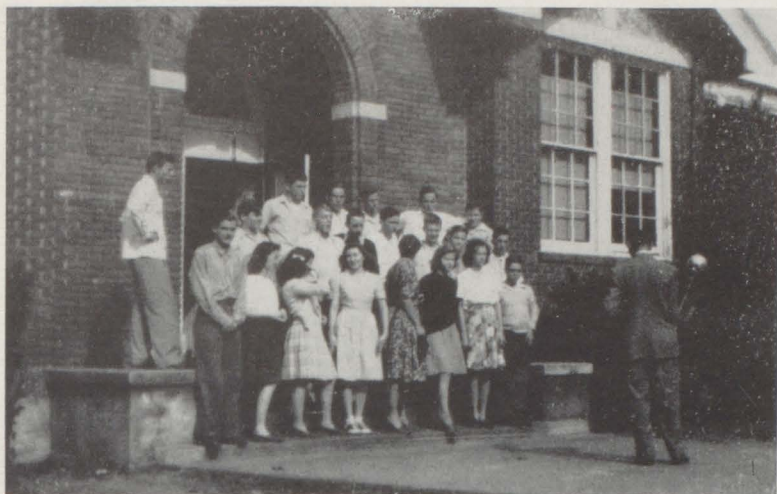
Hiram Cabiness  
Clayton Dean  
Jack Davidson  
Shelby Langston  
Hulner Stuart  
Clyde Johnson  
Billy Weekly  
Carroll Powell  
Tom Kelly

Tommy Page  
Robert Wilson  
Pat Page  
Thomas Boone  
Darrington Helton  
Pete Mothershed  
Quincey Waters  
Randolph McGowan  
Keo Green  
Bill Arnold

Allen Hayes  
Bily Miller  
Carrie Jean Bryars  
Mary Alice White  
Erwin Davidson  
Wanda White  
Whit Stuckey  
Roy Weaver  
Tiny Hall

Activities; Sponsored Montevallo glee club concert, sponsored annual banquet.





President .....	Whit Stuckey
Vice President .....	George Stuart
Secretary .....	Carrie Jean Bryars
Treasurer .....	Bill Fail
Sponsor .....	Miss Leonard

*Activities; bought photographic material, and displayed amateur photography.*

*Caught fixing to pose.*

# C A M E R A C L U B

## MEMBERS

Douglas Baggette  
Nolan Ball  
Edward Barlow  
Carrie Jean Bryars  
George Byrnes  
Grey Cane  
John Conway  
Janice Cox

Jerry Davidson  
Bill Fail  
Gordon Flowers  
Glenn Hooper  
Tom Kelly  
Frances Canci  
Joyce McCartha  
Ward Oliver  
Bobby Owens

Tommy Page  
Donald Powell  
Barbara Richardson  
George Stuart  
Whit Stuckey  
Charles Taylor  
Agnew Thompson  
Robert Wilson







# G I R L ' S A T H L E T I C A S S O C I A T I O N

## OFFICERS

President	.....	Doll Waters
Secretary	.....	Myrtice Carr
Treasurer	.....	Beryl Dunn
Sr. III Representative	.....	Glennys Thomley
Sr. II Representative	.....	Inez Irwin
Sr. I Representative	.....	Eunice Morris
Jr. III Representative	.....	Sue Harris
Jr. II Representative	.....	Anna Lyle West
Jr. I Representative	.....	Ann Durham
Sponsor	.....	Miss Davis

Activities: Published football programs; sponsored Home coming dance, Girl-break Valentine dance and intramural tournaments.



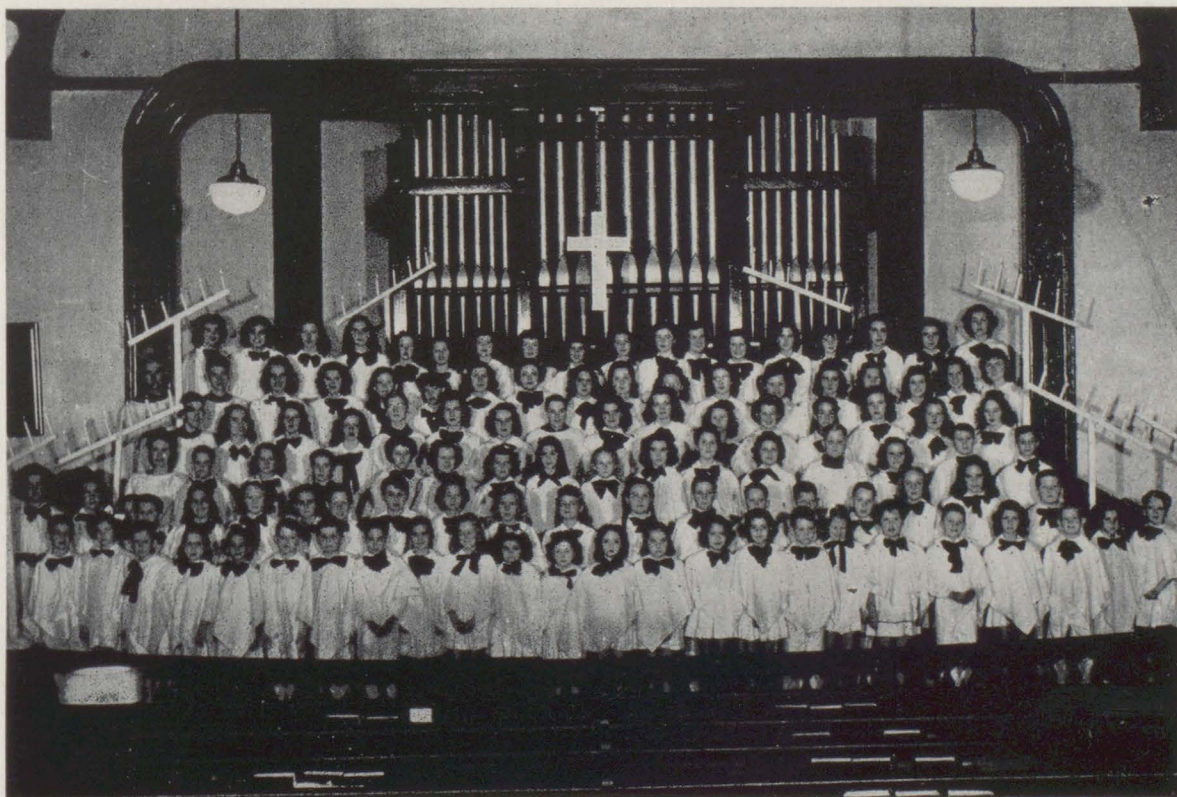
# GLEE CLUB

## MEMBERS

La Dell Barr  
Bobbie Lee Bush  
Carol Bushnell  
Carrie Jean Bryars  
Jean Burnett  
Betty Busbee  
Janice Bryars  
Calvin Coots  
Alice Jo Conway  
Betty Coghlan  
Erwin Davidson  
Ella Perry Foster  
Sara Jo Fagan  
Bobbie Fleming  
Mitzie Forte  
Jean Gilbert  
Jackie Gilbert  
Billie Hathcock  
Ann Hathcock  
Ann Humphries

Jane Jordan  
Deanie Langham  
Tommy Langham  
Gay Nell McElhaney  
Jo Anne McKenzie  
Frankie McGill  
Frances Manci  
Mildred Murphy  
Fay Munn  
Ellen McLain  
Corolyn McMillan, Sec.  
Betty Joyce Newton  
Janice Peacock  
Grace Patrick  
Elizabeth Quinley  
Noma Quinley  
Helen Smith  
Yuvonne Quinley  
Betty Reid  
Beth Thames

Betty Trawick  
LaMar Trawick  
Susan Stephenon  
Sabre Stough  
Jocelyn Tunstall  
Charlotte Van Dyke  
Mary Alice White  
Nell White  
Wanda White  
Ann Willis  
Kathleen Willis  
John Wallace Wilson  
Ann Cain  
Ann Durham  
Jeanette McDill  
Bobbie Grimes  
Edna Earle Wallace  
Imogene Jerkins  
Mrs. Peggy Kern,  
Director







*You can tell they are just posing by the smiles.*



*Where are those Ag. boys!*



*They can cook it, but you can't eat it.*



# FUTURE HOMEMAKERS OF AMERICA

President ..... Doll Waters  
Vice President ..... Jeanette Seedley  
Secretary and Treasurer ..... Betty Jean Duck  
Sponsor ..... Mrs. Young

## MEMBERS

Myrtice Carr  
Eloise Chunn  
Alice Jo Conway  
Betty Jean Duck  
Emma Jean Duck  
Ruby Mae Hammond  
Lou Jean Kilcrease  
Deanne Langham  
Imogene Lee  
Betty Sue Lindsay  
Betty Littles  
Marjorie Reibbon

Jeanette Steedley  
Joyce Steedley  
Annie Laurie Taylor  
Myrtle Jean Tuberville  
Doll Waters  
Grace Weeekley  
Kathleen Willis  
Dorolise Wood  
Leola Yarbrough  
Joline Russell  
Woodie Cabaniss

Activities: Gave hay ride, sponsored Sadie Hawkins Day, gave play, gathered proceeds to buy new books.







# Future Farmers of America

President	Hiriam Cabaniss
Vice President	Mack Dickmon
Secretary	Clayton Dean
Treasurer	Willard Cabaniss
Sponsor	Barney R. Estes

## MEMBERS

J. W. Agerton  
 Nicklus Aaron  
 Orlan Allen  
 Bill Arnold  
 Joe Buck  
 Winston Bolling  
 Hamilton Bryant  
 Douglas Baggette  
 Ray Boone  
 Dale Brown  
 Carlton Boutwell  
 Willard Cabaniss  
 Hiram Cabaniss  
 William Cravey  
 Leroy Coleman  
 D. C. Coleman  
 Jerry Davidson  
 Mack Dickman  
 Clayton Dean  
 Bertran Duck  
 Mack Dean  
 Phil Dickman  
 Tommy Duck  
 Robert Emanuel  
 James Emmons

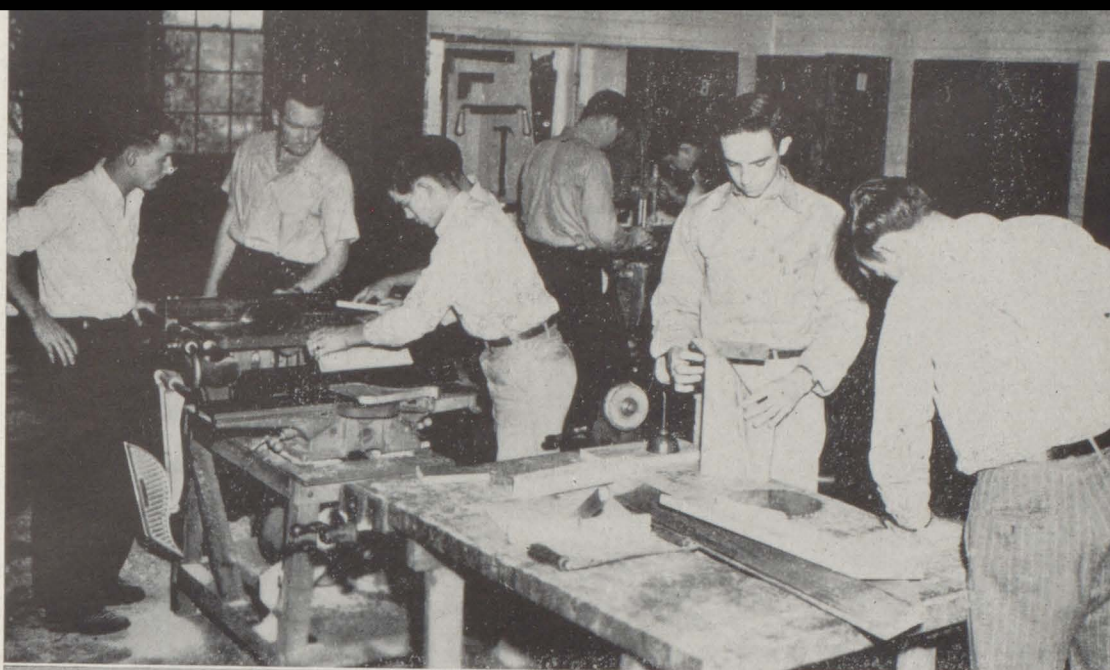
Onive Fowler  
 Norman Gerald  
 Allen Helton  
 Calvin Hayes  
 James Hall  
 Herman Harville  
 Arthur Harville  
 Norman Harris  
 Tiny Hall  
 Hunter Hall  
 Clyde Johnson  
 Alfred Jones  
 Marshall Jones  
 Cecil Jones  
 John Jones  
 Rayford King  
 Dan Lee  
 Aubrey Little  
 Leon Morrow  
 Joe McCreary  
 Jack Morris  
 W. B. Overstreet  
 Lamar Pittman  
 Billy Payne  
 James Phillips

Elmer Phillips  
 Robert Phillips  
 Pat Page  
 Harman Powell  
 Ray Parker  
 Emanuel Quinley  
 Olben Quinley  
 Ray Rebien  
 Joe Shafer  
 Irvin Stewart  
 Jasper Stewart  
 Billy Shipp  
 Sylvester Turner  
 Bryan Thompson  
 Douglas Taylor  
 Lloyd Taylor  
 Lamar Trawick  
 Ben Vines  
 Billy Weekley  
 Marcue Wright  
 Grover Wilson  
 L. T. Weekley  
 Donald White  
 W. V. Williams  
 Leon Yarbrough

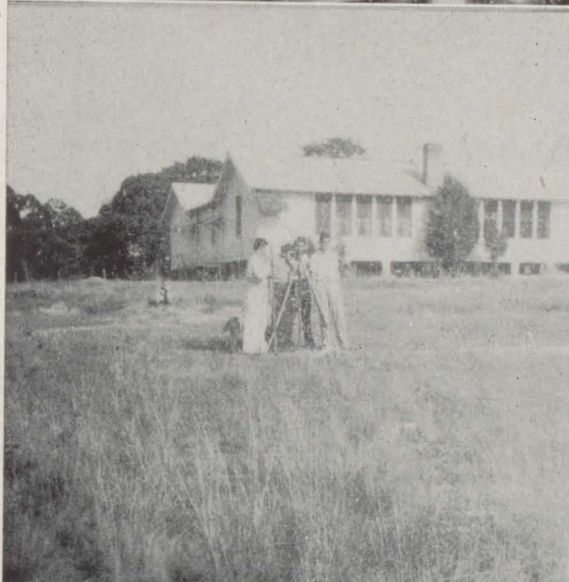
Activities: Gave play, sponsored Halloween barn dance, and hayride.



*Ag. Boys In Action*



*Surveying*



*Must Be Interesting,  
Coleman?*











George Stuar, Treasurer; Jerry Davidson, President; Hiram Cabaniss, Vice President

# SENIORS





#### BUFORD AARON

Member of Beta Club—45, 46, 47. President of Sr. I, Class—45. Sr. Class Editor, Balcoala, 47. President of Student Council, 47.

"Your face, my thane, is as a book where men may read strange matters."

#### LOUISE AGERTON

"This diamond she greets her husband withal."



#### NOLAN BALL

Enrolled in school—47. Camera Club, 47. "Nolan's on the ball."

#### BABS BODDIEN

Cheer Leader 46. "B" Club 46. "What she hath lost, noble Bushnell has gained."



#### BERTRAM BRYANT

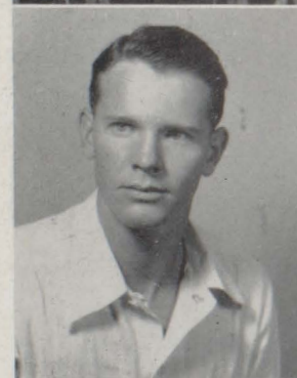
Camera Club, 47.

"Why may they not be my oracles as well and set him up in hope."

#### BOBBIE LEE BUSH

Glee Club, 42, 43, 44, 45, 46, 47.

"So well thy words become thee."



#### FRED MASON BUSH

Beta Club, 47. "B" Club 40, 41, 42. F. F. A. Treas. 40, 41. Served in Army for three years.

"So well thy words become thee—They smack of honor."

#### CAROL LOUISE BUSHNELL

Club reporter Tiger Rag 46. Glee Club 42-47.

"Let's briefly put on manly readiness and meet 'n the hall together."



#### HIRIAM CABANISS

"B" Club 44, 45, 46, 47. Vice Pres. Sr. Class 47. President of F. F. A. 47. Sec. and Treas. of Sr. I Class 45. F. F. A. 44-47. Co-Captain Football team 45, Captain 46, Basketball 45, 46, 47.

"Dismayed, not this our captain, Hiram!"

#### BETTY COGLÁN

Glee Club 45, 46, 47. Music Club 46.

"She can be wise, amazed, temperate and furious, loyal and neutral in a moment."



### JERRY DAVIDSON

Reporter for F. F. A. 47. President of Sr. Class 47. "B" Club 42, 43, 47. Camera Club 47. Treasury of "B" Club 47. Served in Navy for two years. Captain of football team 45. Basketball 44, 47. Co-Captain team in 47.

"The labor we delight is physics pain. This is the door.—English class."

### FULTON (LARDO) DUCK

"B" Club 43-46. Football 43, 45, 46, 47.

"Now, good digestion wait on appetite."

### BERYL DUNN

Basketball 44. GAA Treasurer 47. GAA 46, 47.

"Why do I hold my tongue? That most may claim an argument ours?"

### PHYLLIS FLEMMING

GAA 46. Sr. II Representative. FHA 44, 45, 46.

"We love her highly, and shall continue our graces towards her."

### GORDON FLOWERS

Beta Club 47. Camera Club 46, 47 Campus Photographer for Balcoala, 47.

"If you can look into the seeds of time and say which grain will grow—"

### ALICE YARBROUGH

GAA, 46. Secretary GAA 46. FHA 44, 45, 46. Reporter for FHA 44, 45.

"The expedition of my violent love outruns season."

### KEO GREEN

Served in Army. Football 44, 46. "B" Club 44, 46.

"Ring the alarm bell—before lunch at fourth period."

### BILLY HATHCOCK

Cheer Leader 46. "B" Club 46. Glee Club 46, 47. GAA 46.

"To make society, the sweeter welcome we will keep ourselves till supertime alone."

### ILLA MAE HAYLES

GAA 47. Basketball 46.

"Everything in her life becomes her."

### DARRINGTON HELTON

"B" Club 47, F. F. A. 45. Football 47.

"My spirits shine through me."





### LOIS HINOTE

FHA 45, 46, 47.

"A ring can change matters."

### GLENN HOOPER

Beta Club 45, 46, 47. President of Beta Club 47. State President 47. Camera Club, 47. Sports Editor for Balcoala 47. Assistant Editor of Tiger Rag 46.

"Only I have left to say, more is they due than more than all can pay."

### J. W. JOINER

F. F. A. 43. Enrolled in 41. "He doesn't like to write to girls."

### ALTHEA KING

Beta Club, 46, 47. Glee Club 44, 45, 46, 47. GAA, 46. Secretary of the Student Council 47. "The time approaches that will due decision make us know."

### ALENE LONG

F. F. A. 44, 45, 46. Glee Club 44, 45, 46. "She gives obedience where 'tis truly owed."

### J. D. LONG

Beta Club 47. F. F. A. 44, 45. Vice President F. F. A. 45. "He was a gentleman on whom I built an absolute trust."

### FRANCES MANCI

Beta Club 45, 46, 47. Sec. Beta Club., 47. Advertising manager Balcoala, 46. Sales manager Balcoala, 47. Camera Club, 46, 47. Glee Club, 42, 43, 44, 45, 46, 47. President Jr. Class 46. Basketball 45. "Thy letters have transported me beyond the ignorant past."

### JOYCE McCARTHA

Camera Club 47. Enrolled 47. "Look like the innocent flower, but be the serpent under it."

### RANDOLPH McGOWAN

"B" Club, 47. F. F. A., 42. Veteran for two years.

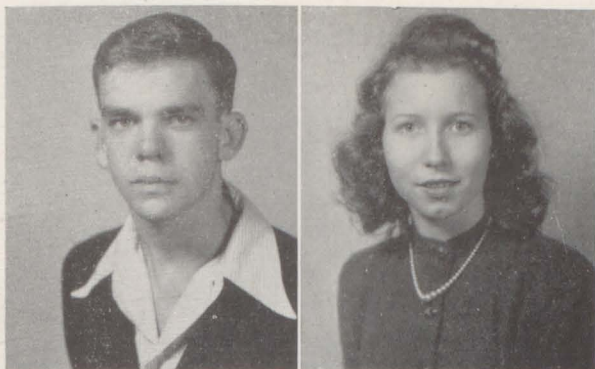
"And I shall put this night's great business into my dispatch—Football banquet!"

### CAROLYN McMILLAN

Beta Club 45, 46, 47. Advertising manager Balcoala 47. Glee Club 44, 45, 46, 47. Alumni Editor Tiger Rag 46. "But signs of nobleness, like stars, shall shine on all deservers."







PAT PAGE

Sport editor of Tiger Rag 46. Football, 45, 46, 47. "B" Club 47. "I will proceed no further is this business—Geometry."

GRACE PATRICK

Glee Club 43-47. Beta Club 46, 47. "When our actions do not, our husbands do make us afraid."



CAROL POWELL

"B" Club 47. "Weak mind and strong arm." Enrolled in 42. F. F. A. 43. Football 46, 47.

PAULINE ROBINSON

Enrolled 46. from Mobile. "Keep your eyes upon her."



MINNIE LOU ROTCH

Beta Club 45, 46, 47. F. F. A. 44. Vice President of Sr. I Class 45. "Pluck from the memory a rooted sorrow, which weights upon the heart."

RICHARD RUSSELL

"A bright and jovial student among us."



DOROTHY SIMS

"Those lisen cheeks of hers are counselors to fear."

ANNIE MAE SMITH

Enrolled in 41. "We love her highly and shall continue our graces towards her."



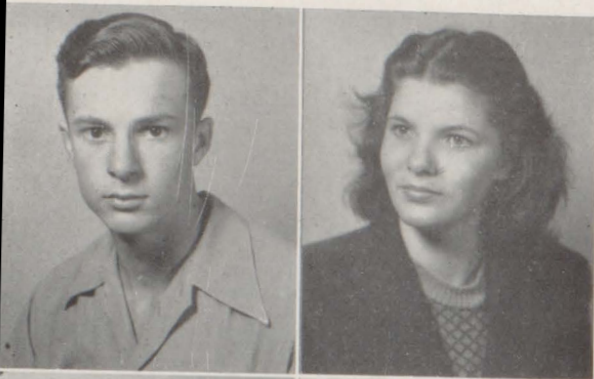
EDITH SMITH

Beta Club 47. Glee Club 46, 47. "The grace of Edith is ever present."

GEORGE STUART

Treasurer Junior Class 46, Senior Class 47. Member of Beta Club 45, 46, 47. "B" Club 46, 47. Vice President Camera Club 47. Business manager Balcoala 47. Football 46, 47. "My mind she has mated, and mazed my sight."





#### WHIT STUCKEY

Beta Club 46, 47. Vice President Beta Club 47. Editor Baloala 47. Tiger Rag editor 46. President Camera Club 47. Vice President Camera Club 46. Cheer Leader 47. "B" Club 47. Underclassman Editor Balcoala 46. Lunch Room Manager 47. "The service and the loyalty I owe, in doing it, pays itself."

#### GLENYS THOMLEY

Beta Club 44, 45, 46. GAA 46, 47. Basketball 44. "I have bought golden opinions from all sorts of people."



#### JACK TUCKER

Glee Club 42. F. H. A. 45, 46. Class Reporter Tiger Rag 46. GAA 47. "As cannons overcharged with double cracks."



#### JILL TUCKER

Glee Club 42. F. H. A. 45, 46. Snooper Tiger Rag 46. "He's worth no more. They say he parted well, and paid his score."



#### JOCELYN TUNSTALL

Beta 46, 47. Glee Club 43, 44, 46, 47. Social editor Tiger Rag 46. "New honors will come upon her—"



#### ROY WEAVER

Advertising manager Tiger Rag 46. Cheer Leader 46, 47. "B" Club 46, 47. "A heavy summons lies lead upon me and yet I could not sleep."



#### FORREST WEEKLEY

Enrolled in '45. Veteran for 10 months. "The wine of life is drawn, and the mere bees is left a vault to brag of."



#### MARY ALICE WHITE

GAA 46. Glee Club 41-47. Beta Club 45, 46, 47. Cheer Leader 46, 47. Vice President of Jr. Class. "Thou linen cheeks of thine are counsels that shine."



#### NITA ANN HALL

"Signs, like stars, shall shine on this deserve."

Not in panel—Hamilton Bryant, Russell Cumbe, Mack Dickman, Hunter Hall, Gerald Hammonds, Babs Hall, Clydis Hadley, Urselle Hall, Olive Howell, Ruth Howell, Robert Emmanuel, Clyde Johnson, Billy Shipp, Ralph Still, Lillie Mae Overstreet, Minnie Lou White.





The dignified seniors of Baldwin County High School have proved themselves a worthy group by their co-operation with and their participation in the school government and activities. They have had a prosperous year and all the underclassmen anticipate with interest what the class of '47 will leave as a memoriam to their alma mater.

As a class, the seniors have given us mid-morning snacks, made us buy magazines in their heated devil-dragon contest, and have entertained us with their dramatic ability displayed in the Jr.-Sr. Play. As members, they have served as "Prexys" of most of our school organizations, have helped to run up attractive scores in athletics, and have (some of them anyway) demonstrated co-operation and helpfulness among their classmates and teachers. Although they got rather "bossy" at times, we are sorrowed when we think what school will be next year without them.



*In Memory*

*of*







*Miss Leonard Instructing Biology Students In the Lab.*

# UNDERCLASSMEN



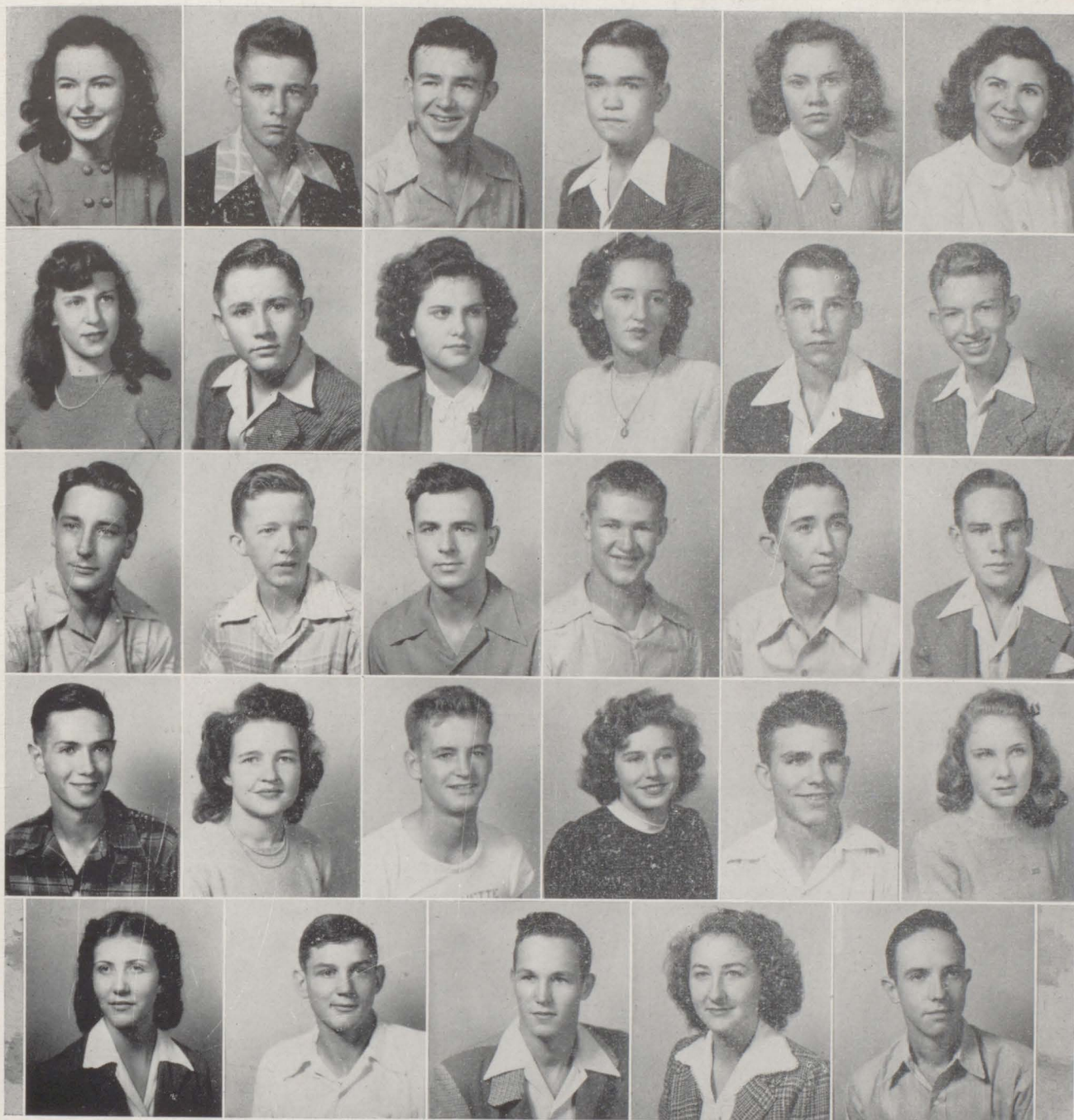


### JUNIOR OFFICERS

President	Carrie Jean Bryars
Vice President	Langston Hedge
Secretary	Carolyn Taylor
Treasurer	Bill Fail

The activities of the Junior Class were sponsoring Halloween Carnival, giving Jr.-Sr. Banquet, participating in Jr.-Sr. Play, selling pencils and paper, and printing Tiger Rag.





Row 1: Carrie Jean Bryars, Grey Cane, Franklin Catrett, Bill Fail, Alice France, Jamie Harris, Bobby Hinterliter, Tom Hooper, Opal Johnson, Imogene Jean Jordan, Tom Kelly, Tommy Langham, Beryl Hedge, Sandy McGill, Cecil McMillan, Ward Oliver, Bobby Owen, Tommy Page, Robert Phillips, Evelyn Richerson, Dick Smith, Woodie Cabiness, Angelo Stuart, Carolyn Taylor, Edith Ward, Billy Weekley, Robert Wilson, Lamerle Wood, Leon Yarbrough.

Not in Panel: J. W. Agerton, Bill Arnold, Winston Bolling, Walter Bryant, Joe Buck, Maroin Buxton, Willard Cabiness, George Cain, Clayton Dean, Norman Gerald, Allen Helton, Marshall Jones, Dan Lee, Annie Lee Ammons, Ann Arnette, Ethel Boone, Ramona Catrett, Olbie Chambers, Louise Clive, Hazel Dempsey, Eurice Garner, Dovie Godwin, Katie Hadley, Oline Henley, Melba Hubbard, Inez Irwin, Mattie Johnson, Lou Jean Kilcrease, Hazel Crawford, Louise Mann, Joe McCreary, Eloise Moring, Louise Morris, Mona Murphy, Irene Noron, Donald Powell, Jeannine Presley, Dorothy Qinley, Olben Quinely, Ray Ricken, Clara Rolery, Anne Steedley, Jeanette Steedley, Charles Taylor, Lloyd Taylor, Sylvster Turner, Edna Earle WaWallace, Mary White.





### SENIOR I CLASS OFFICERS

President ..... Doll Waters  
 Vice President ..... Edward Barlow  
 Vice President ..... Billy Miller  
 Vice President ..... Charles Weatherford  
 Secretary-Treasurer .....

Student Government, Sec I—Thomas Boone, Edward Barlow; Sec. II—Shelby Langston, Mary Nell Powell; Sec. III—Joline Russel, L. T. Weekly.

### SENIOR I, SECTION I

*Sponsor, Mrs. Bessie S. Bryant*

Douglas Baggett  
 Edward Barlow  
 Ray Boone  
 Thomas Boone  
 Carlton Boutwel  
 Dale Brown  
 George Byrne, Jr.  
 Arthur Clement  
 Leroy C. Coleman  
 John Conway  
 William Cravey  
 William Crosby, Jr.  
 Jack Davidson  
 Norville Davis  
 James Emmons  
 Bertrand Duck  
 Ownive Fowler  
 Morris Gilbert  
 Denver Griffin

Jack Hall  
 Calvin Hayles  
 Alene Boulter  
 Nell Brewton  
 Janice Bryars  
 Betty Bryars  
 Gladys Bush  
 Betty Nell Byrd  
 Myrtice Carr  
 Eloise Chunn  
 Vernie Cooper  
 Janice Cox  
 Emma Jean Duck  
 Annie Sue Duffee  
 Bobbie Fleming  
 Josephine Garner  
 Erma Clyde Gentry  
 Betty Hadley



SENIOR I, SECTION II

*Sponsor, Lillian Leonard*

James Hale  
James Jaye  
Loree Johnson  
Alfred Jones  
John Jones  
Marshall Kilcrease  
Rayford King  
Jack Lamberth  
Shelby Langston  
Betty Sue Lindsey  
Billy Little  
Earl Ree Long  
Jeanna Dean Mann  
Ethel McDonnel  
Eleanor McDill  
Laurie McMillan  
Billy Miller

Julia Minchew  
Julian Mixon  
Eunice Morris  
Jack Morris  
Edwina Overstreet  
W. B. Overstreet  
Mazie Parker  
Billy Payne  
Willis Peterson  
Ama Jean Phillips  
Elemer Phillips  
James Phillips  
Henry Pittman  
Mary Nell Powell  
Peggy Pullen  
Joyce Purvis  
Elizabeth Quinley







### SENIOR I, SECTION III

*Sponsor, Mrs. Bessie Milam*

Ruby Mae Hammond  
 Nellie Ann Harris  
 Jaye Harvill  
 Loraine Horne  
 Dudley Howell  
 Juanita Neal  
 Ray Parker  
 John Earl Rasberry  
 Amylee Richardson  
 Barbara Richardson  
 Dottie Sue Robinson  
 Mildred Roley  
 Joline Russell  
 Helen Smith  
 Nellree Smith  
 Augustine Stewart  
 Ethel Stewart  
 Ivan Stewart  
 Jasper Stewart

Feulner Stuart  
 Robert Stuart  
 Carolyn Thomley  
 Agnew Thompson  
 Bryan Thompson  
 Coris Turner  
 Eunice Turner  
 Betty Trawick  
 Doll Waters  
 Donald Watts  
 Charles Weatherford  
 Grace Weekley  
 L. T. Weekley  
 Wanda White  
 Kathleen Willis  
 Betty Ruth Wilson  
 Grover Wilson  
 Marcus Wright  
 Leola Yarbrough



# GRADE IX, SECTION I

Teacher, Mrs. George Stough

Nicholas Aaron  
Charles Adams  
Henry Adams  
Orlan Allen  
Albert Blount  
Horston Boyington  
Elve Blackmon  
Julius Brown  
Gene Bryant, Vice Pres.  
Frank Burt  
David Carter  
D. C. Coleman

Jesse Corley  
Benford Cruitt  
Lamar Day  
Murry Davis  
Tommie Duck  
Phillip Dickmon  
Mack Dean  
Melvin Fleming  
Jonnie Rith Ball  
Nancy Brown  
Carol Broughton  
Jean Burnette

Helen Chandler  
Mary Louise Clemmons  
Alice Jo Conway  
Evie Mae Crabtree  
Erwin Davidson  
Eunice Dove, Sec.  
Audrey Durant  
Sara Jo Fagan, Pres.  
Octavia Gidions  
Dennie Langham  
Mildred Murphy



# GRADE IX, SECTION II

Teacher, Mrs. T. Busbee

Catherine Gancy  
Edward Godwin  
Elvie Hall  
Sue Harris, Pres.  
Norman Harris  
Arthur Harville  
Herman Harville  
Patricia Heaton  
Edna Mae Hicks  
Gladys Irwin  
J. B. Johnson  
Marjorie Johnson

Lorraine Lee  
Imogene Lee  
Betty Littles  
Ruth Little  
Aubrey Little  
J. C. Long  
Brooks McDill, Vice Pres.  
J. B. McDowell  
Johnnie Mae Morris  
Leon Morrow  
Bernis Middleton  
Evelyn Mosely

Jimmie Dell Powell, Sec.  
Jean Pullen  
Rachel Purvis  
Dorothy Louise Neal  
Christine O'Connor  
Rena Mae Overstreet  
Robert Palmer  
Louise Plato  
Lamar Pittman, Treas.  
Emanuel Quinley  
Daisy Rotch  
Dorolene Wood



# NINTH GRADE, SECTION III

*Teacher, Mrs. Helen Young*

Herman Powell  
Odell Robinson  
Joe Shafer  
Douglas Taylor  
Kenneth Trawick  
Lamar Trawick  
Benjamin Vines

John Wallace Wilson  
Donald White  
Kenneth White  
Horace Williams  
W. V. Williams  
Cecil Jones  
Jo Ann McKenzie

Betty Reid  
Marjorie Rieben  
Minerva Richerson  
Joyce Steedley  
Susan Stevenson  
Sabra Stough  
Annie Laurie Taylor

Ruth Taylor  
Irene Thompson  
Lucille Tuck  
Myrtle Jean Tuberville  
Aleane Wallace  
Ann Willis



# GRADE VIII, SECTION I

*Teacher, Miss Matthews*

Donald Agerton  
Pat Baggett  
W. C. Blair  
Irma Broughton  
Alva Bush  
Chalmers Bush  
Mazie Dean

Bert Chestang  
Charles Clum  
Joel Clark  
Ora Cowart  
Willie C. Davison  
Fred Dempsey  
Oleta Durant

Mitzie Forte  
Evie France  
James Garner  
Jacqueline Gilbert  
Ollie Graham  
Alton Grimes  
De Vern Hadley

Joe Hall  
Kathryn Hammond  
Allen Hayes  
Billy Howell  
Ann Humphries



## EIGHTH GRADE, SECTION II

*Teacher, Ruth West*

Robert Jaye  
Elrena Jerkins  
Kathleen Jones  
Marilyn Jones  
Margaret Jones  
Jane Jordan  
Fletcher Johnson

Maureen Kervin  
Thelma Lane  
George Lee  
Aubrey Long  
Audrey Long  
Bobby Joe Mann  
Walter McConnell

Bobby Sam McDill  
W. D. McDowell  
Gay Nell McElhanev  
Bobbie McGill  
Frankie McGill  
Lyrleen Mixon  
Flossie Morrow

Joyce Mosclev  
Alice Ruth Overstreet  
Lucille Overstreet  
Margie Overstreet  
Eileen Peterson  
Lorie Marie Poston



## GRADE VIII, SECTION III

*Teacher, Margaret Chunn*

Douglas Peavy  
Sammy Pipkin  
Jimmy Reid  
Sibley Rider  
Charley Sims  
Leslie Stiers  
Johnny Taylor

Bill Thompson  
J. W. Tolbert  
Walter Trawick  
J. C. Wallace  
Curtis Walz  
Walter Ward  
Lavon Watts

Lavon Watts  
Randolph Watts  
Onree Wilson  
Janice Peacock  
Noma Quinley  
Dorothy Lee Sherrer  
Faith Shiver

Sara Nell Skipper  
Lottie Mae Stewart  
Beth Thames  
Betty Trawick  
Charlotte Van Dike  
Annie Lou Wallace  
Anna Lyle West



## GRADE VII, SECTION I

*L.L. Teacher, Mildred Davis*

Bettye Boan  
Marie Broughton  
Aline Bryars  
Frankie Buck  
Bettye Bushie  
Ann Cain  
Martha Clemmons  
Audrey Cooper  
Eloise Cooper  
Ruth Corley

Eunice Crutchfield  
June Danis  
Myrtis Day  
Ruby Dorman  
Ann Durham  
Helen Fields  
Willie Mae Flemming  
Ella Foster  
Myrtle Foster  
Patsy France

Jean Gilbert  
Celdon Aaron  
Virgise Blackman  
Newburn Boutwell  
Clinton Burt. Sec.  
David Conway  
Jack Cooper  
Billy Joe Coone  
Calvin Coots  
Charles Crabtree

Billy George Cruitt  
Gordon Day  
Billy Eubanks  
Paul Floyd  
Gaston Fuqua  
Johnie Gafford  
Thomas Bailey  
Hazel Alexander  
Ladell Barr  
Barbara Boan



## GRADE VII, SECTION II

*Teacher, Mrs. Roy Terrell*

Pete Gilliland  
Virginia Griffin, Treas.  
Sterlin Griffin  
Barbara Jean Grimes  
Inez Hadley  
Charles Hamilton  
Bill Hart  
Myrtle Joyce Heaton  
Jimmy Hinote  
Forrest Jerkins  
Imogene Jerkins  
Albert Jones

Alonzo Johnson  
Marion Johnson  
Marjorie Johnson  
Jimmy Jordan  
Hubert Kinnon  
Bobby Knight  
Helen Lamberth  
Vivian Lane  
Bobby Langham, Sec.  
Georgia Langham  
Stafford Langston  
Helen Libby

Julian Little  
Alton Long  
Betty Mann, Vice Pres.  
Jeanette McDill  
Clara McDonald  
Junior McDonald  
Bobby McGill  
Cecil McLain  
Ellen McLain  
Bobby McMillan  
James Mew  
Janette Mooror

Mack Mooror  
Ruby Mooror  
Levon Moseley  
Faye Munn  
Betty Neal  
Doris Neal  
George Newton, Pres.  
Dick Owens  
Roy Parker



### GRADE VII, SECTION III

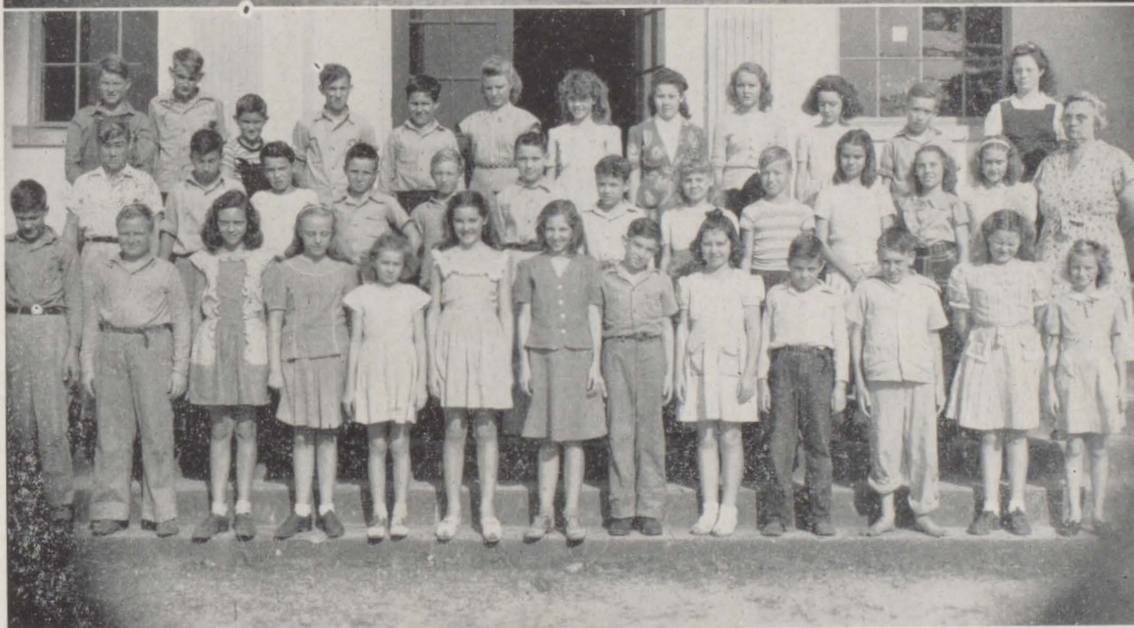
*Teacher, Mrs. Durant*

Lloyd Palmer,  
Ray Peavy  
Thomas Pettis  
Norman Poston  
Louise Poston  
Roger Presnal  
Walton Presnal  
Yvonne Quinley  
Wallace Quinley  
Allen Quinley  
George Rayhon

Y C. Richardson  
Gladys Roberts  
Donald Smith  
Retha Smith  
Rose Smith  
Dorothy Stewart  
Evelyn Stewart  
Norman Stewart  
Susie Stewart  
Annie Mae Tanner

Ronnie Tennyson  
Sybil Tew  
Lavada Thompson  
Leo Travis  
Eugene Trawick  
Neal Trawick  
Lavon Tuck  
Eugene Vines  
George Wasdin  
Gwendolyn Watts

Everette West  
James Wiggins  
Henry Wiggins  
Gene White  
Isaac White  
Nell White  
Cecil Williams  
Mary Willis  
Lelia Mae Wilson  
Viola Yarbrough



### GRADE VI, SECTION I

*Teacher, Mrs. Y. C. Hall*

Maxene Baggett  
Jeanne Ballard  
Jewellene Boyington  
J. D Brown  
Joyce Brunson  
Zulene Bryers  
Claude Byrd  
John R. Conway  
Nora Mae Cooper  
Alvin Cooper  
Jacob Cooper

Joyce Davis  
Glenn Davis  
Eugene Eady  
Vernell Eiland  
Shirley Frank  
Dorothy Flemming  
Dale Ganey  
Nolan Gilliland  
Mary E. Godwin  
Willie F. Godwin  
Jimmie Gore

Orrie Green  
Alvernon Grimes  
Rayford Hadley  
Louise Harville  
Virgie Hinote  
Jack Hidge  
Winfred Hosford  
Vivian Hunt  
Bobby J. James  
Thomas Jaye  
Armond Johnson

Billy Jones  
Claude Jones  
Hazel Jinmon  
Faye Bell Lee  
Jack Lindsey  
Katie Lou Maddox  
Julia Mashburn  
Annete Miller  
James Miller  
R. L. Morris



# GRADE VI, SECTION II

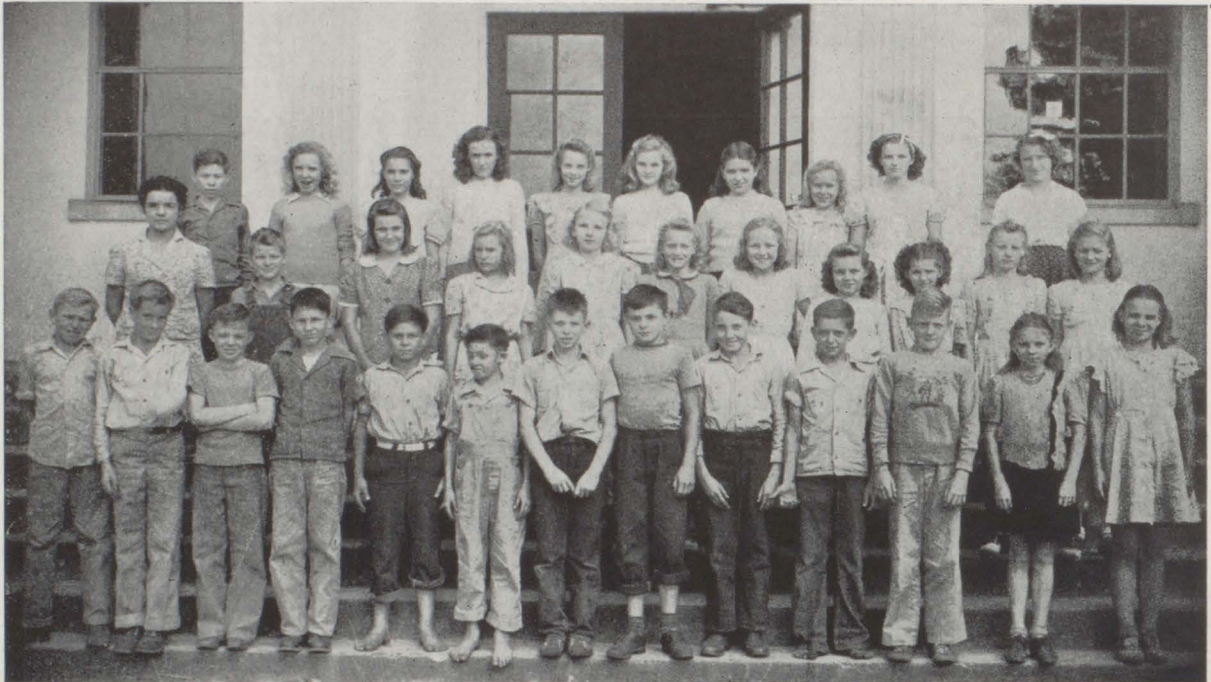
Carol Nall  
 Frances Owens  
 Virdie Palmer  
 Dorothy Parker  
 Peggy Payne  
 Virginia Mae Presnoll  
 Doris Pugh  
 Jean Reid  
 Donald Ann Ribinson

Faye Skipper  
 Joyce Stevens  
 Joyce Stewart  
 Juanita Stewart  
 Olga Mae Sutton  
 Gussie Mae Sanspree  
 Mary Lois Taylor  
 Ethel Van Dyke  
 Carolyn White

Patricia White  
 Earnestine Wilson  
 Lucille Williams  
 Frances Rabon  
 Kathleen Stiers  
 Jerry Perkins  
 Archey Presley  
 Neal Jr. Presley  
 Frank Propst

*Teacher, Isabel McLeod*

Norman Richardson  
 Laverne Steedley  
 Elmer Stewart  
 George Stough  
 John Thomas  
 Robert Wilson  
 Carl Williams  
 Luther Young  
 Eugene Sims



# GRADE V, SECTION I

Glenn Aaron  
 Phil Bailey  
 Douglas Barlow  
 Brown Bass  
 Buford Biggs  
 Tommy Bradley  
 Frank Burnett  
 Pat Byrne

Jimmy Chancellor  
 Clyde Chandler  
 Hoyt Cooper  
 John Cowser  
 James Crabtree  
 Mack Duck  
 Hubert Eday  
 Herman Field

Larry Ford  
 Alice Marie Allen  
 Bertha Ann Benoist  
 Bertha Mae Blair  
 Jeanette Burt  
 Peggy Jo Byrd  
 Urlla Dean Cartton  
 Florence Chunn

*Teacher, Mrs. Jordan*

Gladys Coleman  
 Lauree Coleman  
 Annie Pearl Crutchfield  
 Barbara Cruzan  
 Betty Dove  
 Luverne Faulk  
 Louise Fell  
 Anne LaurieFFolmar



## GRADE V, SECTION II

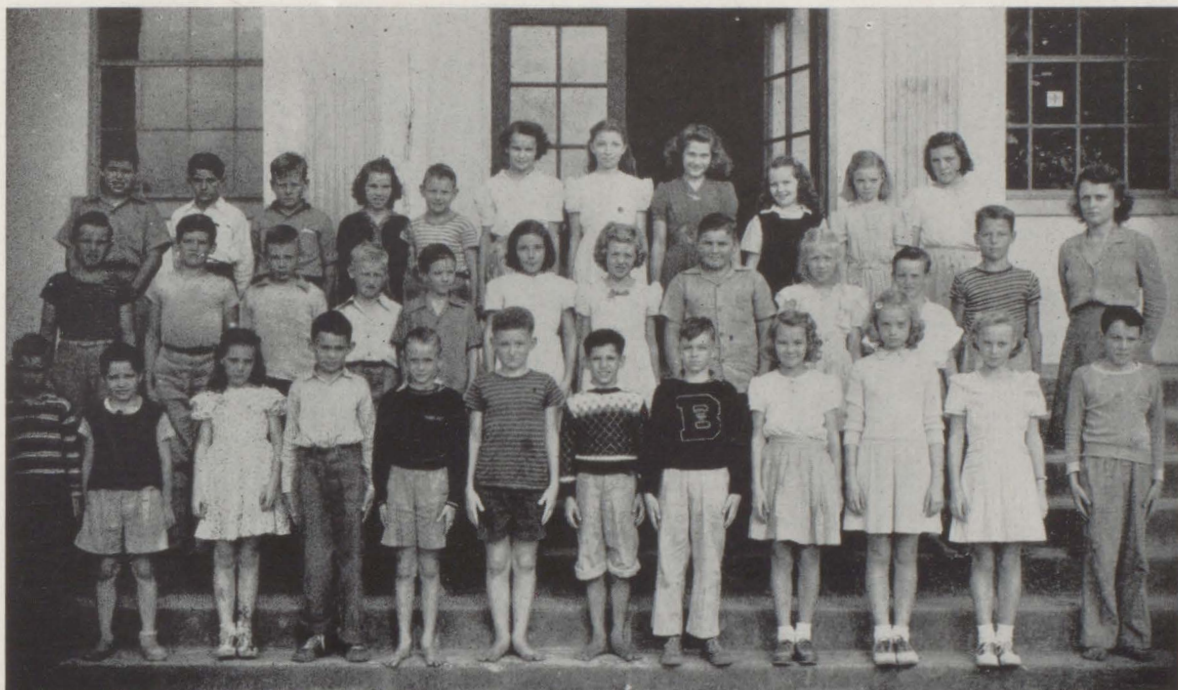
*Teacher, Evelyn Chunn*

Frank Cottongin  
Howard Garner, Jr.  
Harry Gilbert  
Thomas Hall  
Jerry Hart  
Lewis Hobbs  
Morgan Little  
Billy Long  
William Jackson

Leroy McKinley  
Billy McDill  
Jyles Macheni  
Kenneth Mann  
Raymond Melton  
Luther Moorcr  
John Franklin Peacock  
Howard Phillips, Jr.  
John Powell

Kent Phillips  
Ervin Powell  
Carolyn Gamble  
Carrie Lon Green  
Joyce Grimes  
Wilma Hall  
Mary Ellen Pettis  
Ardith June Heaton  
Betty Gayle Henderson

Elnora Hosford  
Merle Jones  
Betty Ann Lee  
Fay Middleton  
Peggy Joyce Minor  
Shirley Moorcr  
Carolyn Owens



## GRADE V, SECTION III

*Teacher, Mrs. Clarice Beebe*

Dewey Joiner  
Jordan Phillips  
Winnall Plato  
Weldon Redmond  
Thad Sellers  
Alex Sherrer  
Leo St. Amant  
Elwood Stewart  
Virgle Stewart

Bobby Taylor  
Tommie Trawick  
Tommie Trawick  
Malcolm White  
Glen Whilliams  
Preston Williamuon  
Marilyn Gunter  
Jean Melton  
Ernestine Rabon

Margaret Rawls  
Janette Robinson  
Sue Russell  
Dorothy Smith  
Laura Smith  
Vernie Stewart  
Louise Tew  
Frankie Thompson  
Marie Turberville

Marion Vice  
Shirley White  
Carol Williams  
Edna Overstreet  
Margaret Overstreet  
Faye Yarbrough



# GRADE IV, SECTION I

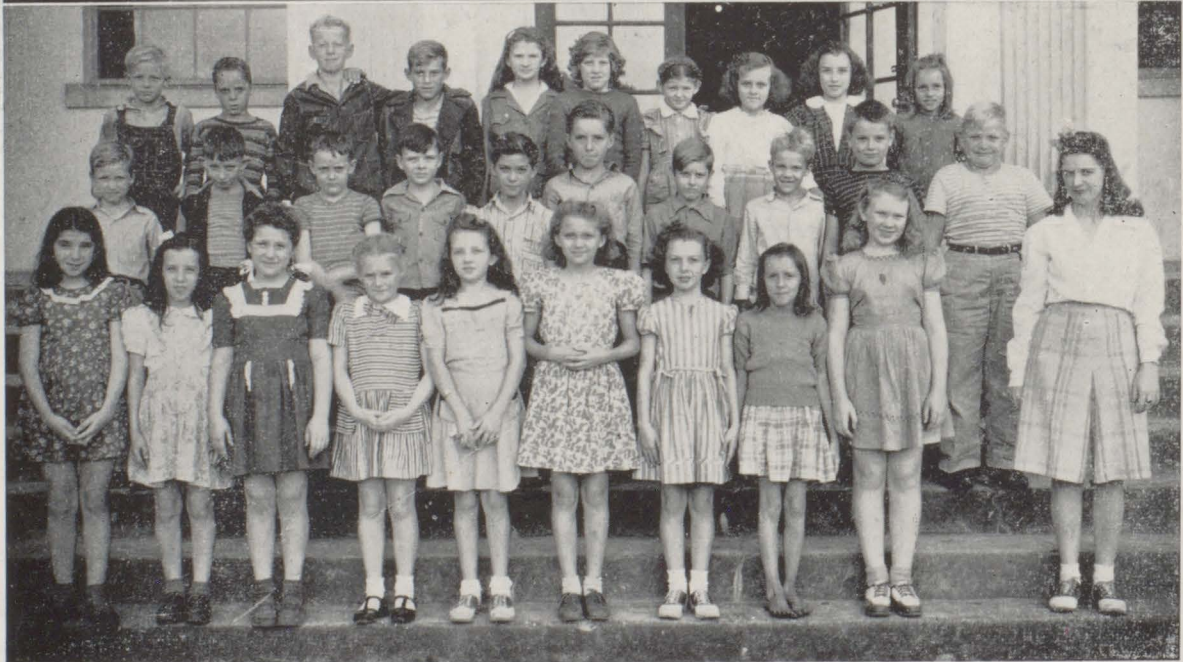
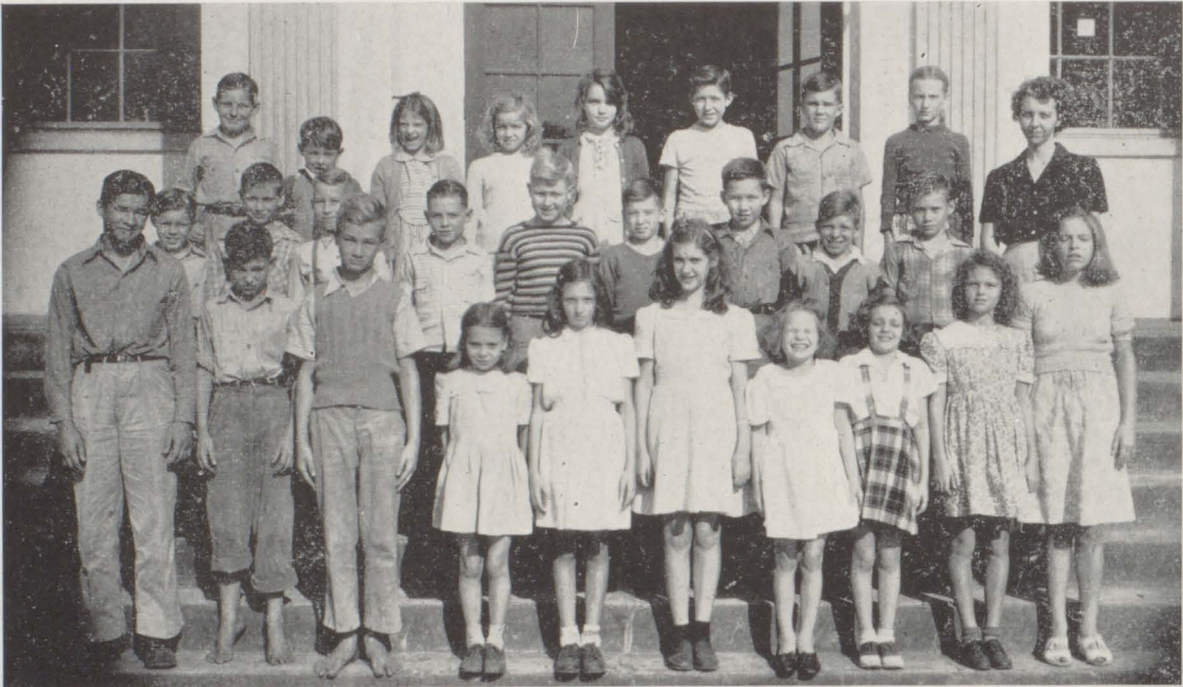
Teacher, Mrs. L. Zehner

Douglas Adams  
Charles Bankester  
George Bacac  
John Barac  
W. T. Barnes  
Cleveland Bell  
Elward Boyington  
BBilly Bryars

Clyde Byrne  
Joseph Byrd  
Hill Burt  
Roy Cannon  
Billy Clemmons  
J. C. Downey  
Dolphin Emmons  
Tommy Miller

Ned Durant  
Joy Arrant  
Shelby Arrant  
Janiece Andre  
Joyce Ballard  
Mary Lou Bartley  
Ann Bolen  
Louise Byrd

Betty Carlton  
Nona Dempsey  
Teresa Eubanks  
Eleanor Greathouse  
Lavon Hamilton



# GRADE IV, SECTION II

Teacher, Miss Jean Blalock

Iulana Fail  
Alice Fraser  
Peggy Jo Fox  
Kathryn Godwin  
Norma Howell  
Geraldine Hunt  
DDiane Kern  
Vivian Godwin

Betty Langham  
Minnie Elizabeth Lee  
Lillie Moorer  
Ann McMillan  
Elaine Nall  
Edna E. Phillips  
Betty R. Quinley  
Emogene Quinley

Kenneth Fork  
Clifford Green  
Stanley Harvill  
J. T. Hodges  
Bobby Howell  
Bruce Johnson  
Rodney Johnson  
Doyle Joiner

Randall Melton  
John McDuffee  
Blanche Peavy  
Harry Phillips  
Bob Reid  
Walter Riggs



# GRADE IV, SECTION III

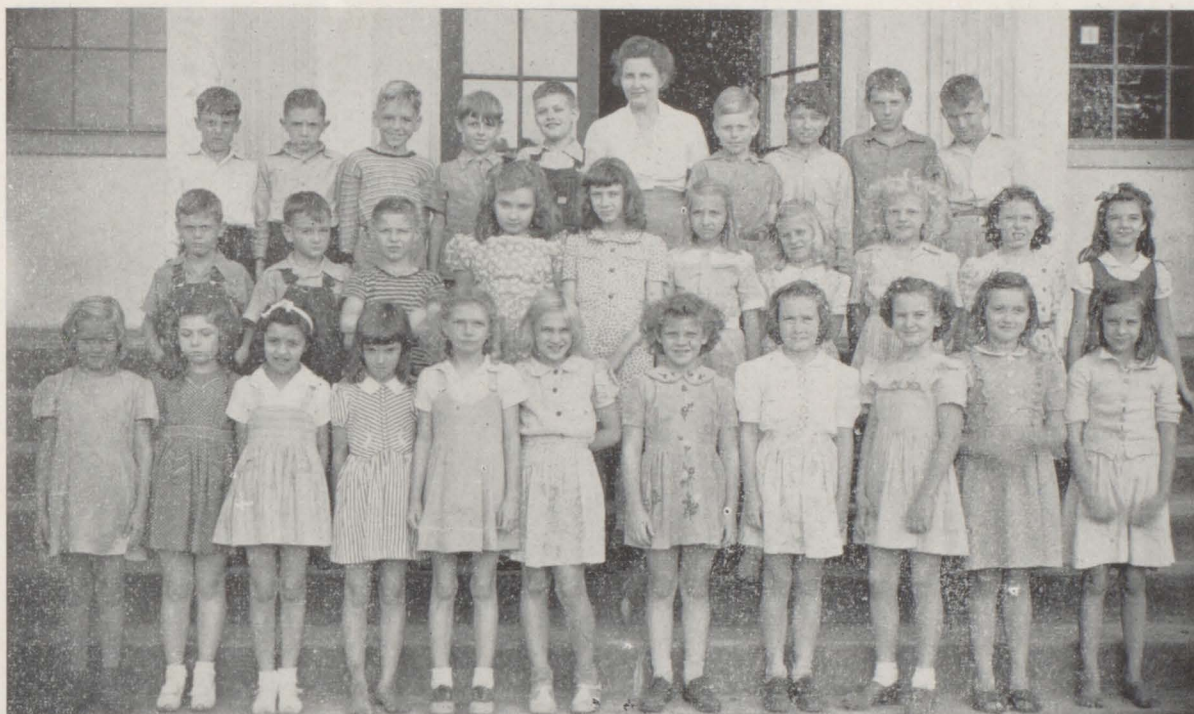
*Teacher, Mrs. Ellen Hall*

Richard Sandspreo  
Willie Skipper  
James Shivers  
Earl Stephens  
Edwin Smith  
Bobby Trawick  
Wallace Weekley  
Hough White

Kenneth White  
Billy Wilson  
Richard Williams  
Sarah Propst  
Molly Punessen  
Mary K. Quinley  
Dolores St. Amant  
Lillian Sandera

Dorice Sims  
Louise Stakey  
Ruth Tanner  
Peggy Jo Trawick  
Ouida Thames  
Betty Taylor  
Willie Mae Thames  
Sylvia White

Merle Jean Webb  
Margaret Weaver  
June Williams  
Jeanett Yarbrough  
Ann Zehner



# GRADE III, SECTION I

*Teacher, Sarah Hutchison*

Ilena Allen  
Charles Aylin  
Ann Baggett  
John William Baggett  
K. P. Bankester  
Herma Barr  
Joe Franklin Berry  
Jerry Boyington

Anna Katherine Brannon  
Billy Chandler  
Johnny Chason  
Romeo Coleman  
Autry Conway  
Charles Cook  
Joseph Cook  
Bruce Eady

Pauline Eubanks  
Jimmy Faulkner  
Billy Joe Feminear  
Raford Fleming  
Bennie Fox  
Nancy Claire Friel  
Pearl Godwin  
Dorothy Mae Goodman

Lottie Graham  
Sadie Mae Greene  
Joyce Odom  
Mitchell Perkins  
John Pipkin  
Felon Powell



### GRADE III, SECTION II

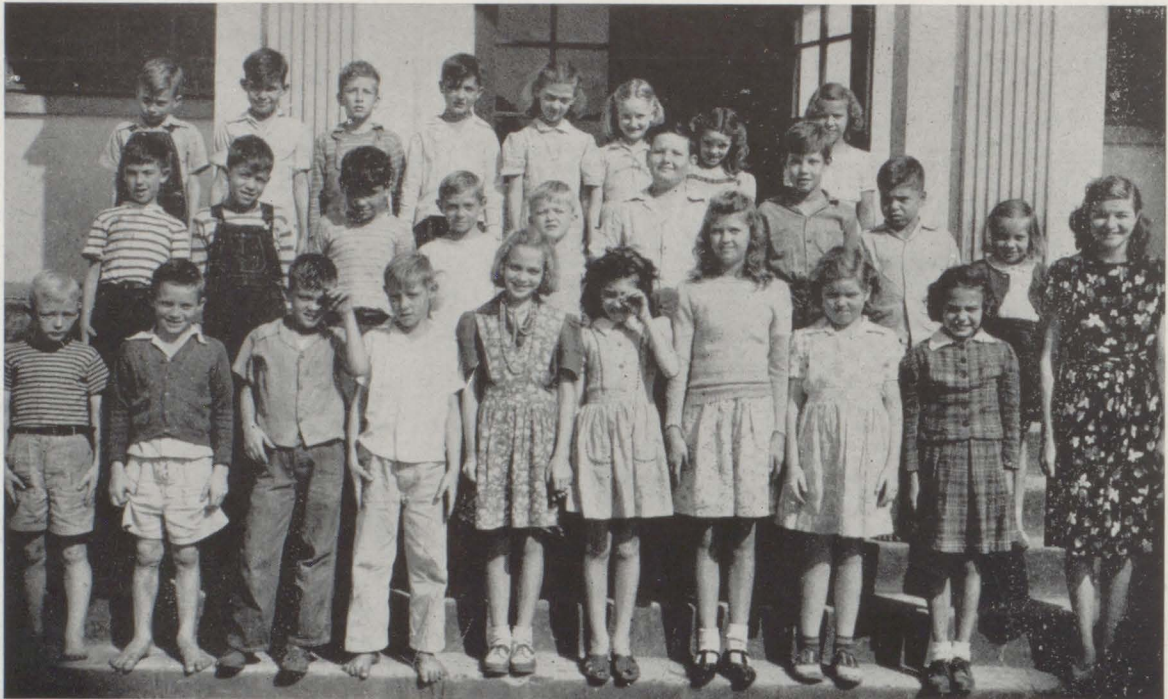
*Teacher, Mrs. Girsham*

Emmett Hall  
Bill Hall  
Thomas O. Hall  
Arthur Hinson  
Harvey Horn  
Floyd Jackson  
Preston Joiner

Fred Kilcrease  
Jimmy Langham  
Tim McConnell  
Jimmy Dale McDill  
Johnie McGill  
D. C. McDinley, Jr.  
Merton Middleton

James Moorer  
Billy Owens  
Betty Jean Hinote  
Lauvra Hosford  
Jeanine Jackson  
Georgia Mae Jeffers  
Nora Lee Johnson

Ileen Lee  
Alison Mason  
Vermelle McDill  
Viola Ann McKinley  
Joyce Mew



### GRADE III, SECTION III

*Teacher, Mrs. Tucker*

Carolyn Preswood  
Dottie Plato  
Wilodene Robinson  
Sarah Richburg  
Matty Jean Strickland  
Vivian Schram  
Rebecca Sims  
Irma Steedly

Alice Thompson  
Betty Wiggins  
Bobby Jean Williams  
Daisy Weaver  
Loice Williamson  
Charles Price  
Fred Powell  
Thomas Robinson

Bill Rhodes  
Thomas Salter  
Wesley Redmon  
William Stough  
Frank Stamps  
Emory Steedly  
Robert Taylor  
Pat Trawick

Cecil Trawick  
Ben Willis  
Neil White  
Hannis Williams  
Franklin Yarbrough



# GRADE II, SECTION I

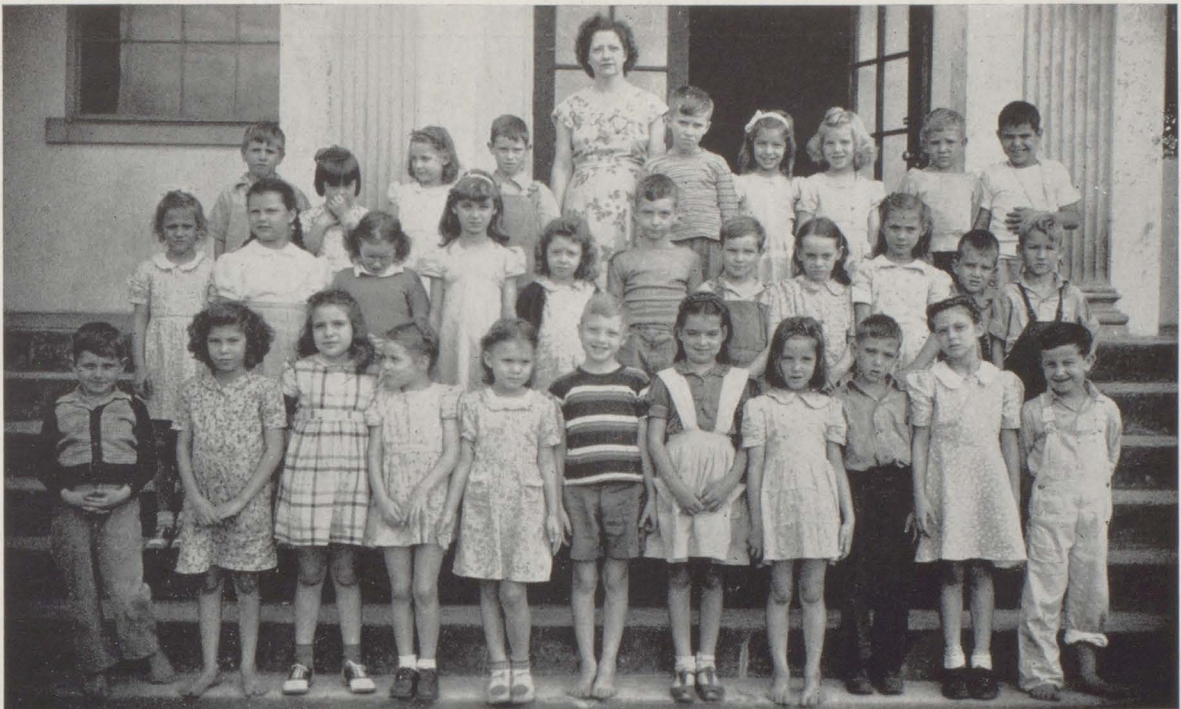
Teacher, Mrs. Louise Pruette

Sybl Baggette  
Jane Ballard  
Patricia Bell  
Margaret Biggs  
Toni Mae Bodden  
Jane Bolon  
Doris Ann Brown  
Shirley Caprara

Barbara Carlton  
Mary Clark  
Patsy Davidson  
Joyce Downey  
Nyla Duck  
Wilma Durant  
Carolyn Eubanks  
Joyce Eubanks

Gracie Fleming  
Betty Loice Ford  
Earl Ray Bell  
Mason Bryars  
Dean Bushnell  
Robert Byrd  
Earle Chancellor  
David Coleman

David Coleman  
Roy Corley  
Richard Eady  
John Calvin Emmons  
Tony Gibson  
Edward Gilbert  
Jessie Godwin  
James Graham



# GRADE II, SECTION II

Teacher, Mrs. Dorothy Long

George Bailey  
Tony Brooks  
Billy Day  
Winfred Garner  
Howell Hall  
Reginald Henderson  
Sonny Holliday

Tillman Hosford  
Chester House  
Edgar Jackson  
Sherman James  
Ralph Jeffers  
Joe Knight  
Leslie Lee

Frank Moorer  
Betty Jean Brown  
Dorothy Green  
Mazie Harville  
Betty Jo Heaton  
Ann Hodges  
Louise Howell

Patsy Johnson  
Sybil Knight  
Sylvia Knight  
Ruth Lambert  
Gloria Langham  
Mary Joyce Miller  
Louise Overstreet



## GRADE II, SECTION III

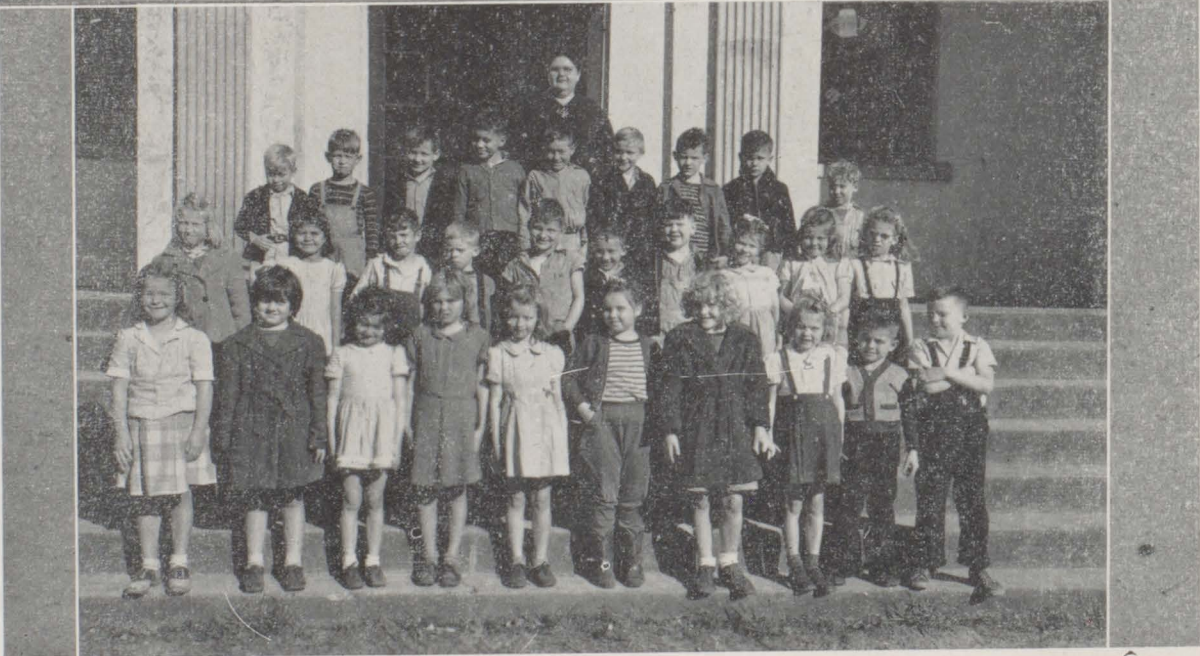
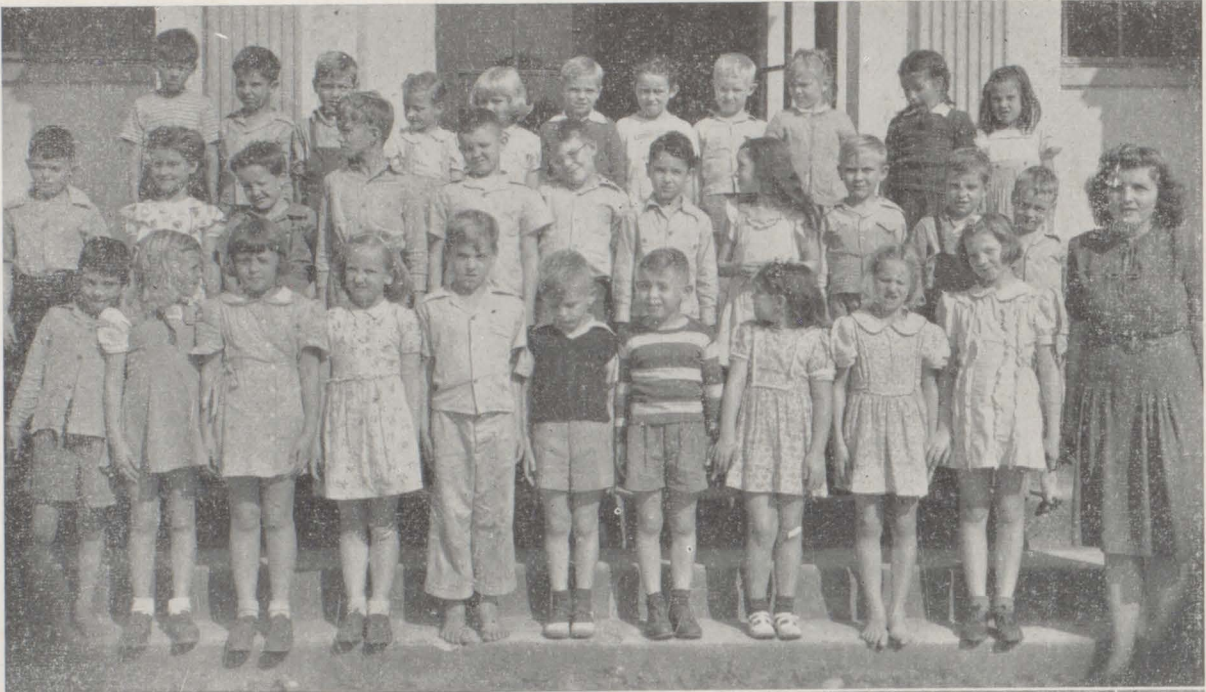
*Teacher, Kathryn McMillan*

Huie Bell  
Charles McKinley  
Richard McPhaul  
Ernest Miller  
Elgia Patty  
John Walter Powell  
Peter Propst  
Joseph Robinson

Jack Sellers  
James Smith  
Donald B. Stewart  
Blenn Stiers  
John William Taylor  
James Howard Thomas  
Don Tuberville  
Glenn Wasden

Jerry White  
Jimmy White  
Dixon Wilson  
Patsy McDuffee  
Shirley Ann McKenzie  
Margaret Morrer  
Peggy Jeane Phillips  
Jean Quinley

Marjorie Faye Rhodes  
Shirley Richbergh  
Ora Dee Sanders  
Peggy Joyce Tolber  
Carol Joy Trawick  
Joan Vaughan  
Mary Williams  
Dorothy Anne Wilson



## GRADE I, SECTION I

*Teacher, Mattie Lee Perry*

James Abbott  
Newton Beasley, Jr  
Lloyd Brown  
Richard Byrd  
Lonnie Conway  
Robert Cook  
Brown Crosby  
Eugene Curry

George Curry  
Julian Davis  
Edward Fox  
William Gafford  
H. L. (Buddy) Godwin  
Harold Hall  
Joe Hamilton  
Gene Hicks

Donald Ray Joiner  
Janice Abbott  
Louise Brown  
Beatrice Bryars  
Carry Belle Byrd  
Audrey Mae Chandler  
Dorothy Corley  
Geraldine Cruzan

Emogene Davidson  
Jean Bailey Freil  
Dolores Ganier  
Eleanor Gideons  
Dean Bush



## GRADE I, SECTION II

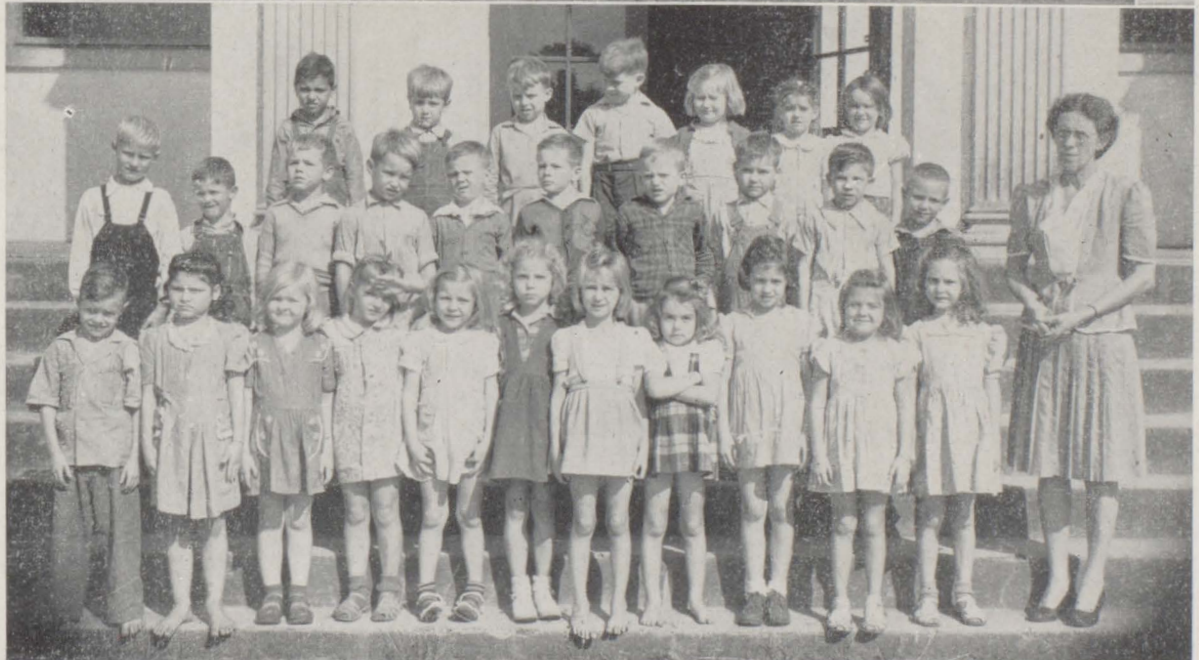
*Teacher, Mrs. Helen Feldt*

Jacque Grant  
Dasy Nell Heaton  
Linda Hinote  
Doris Ann Hubbart  
Dorothy Jane Hall  
Glee Howell  
Dorothy Ann Hinote  
Clarice Johnson

Catherine Goiner  
Louise Jackson  
Judith King  
Judith Lambert  
Dorothy Langham  
Mary Mann  
Ralphine McConnell  
Dorothy Nell McDill

Betty Palmer  
Tommy Hawkins  
William Joiner  
Verlon Joiner  
Lloyd Jeffers  
Tommy Jordan  
Cary Kennedy  
David Lindsey

Francis Luther  
Jack Long  
Billy Melon  
Jimmy Nelson  
Allen Nix



## GRADE I, SECTION III

*Teacher, Mrs. Viola Quinley*

Howard Brooks  
Eudon Crutchfield  
Ray Phillips  
Major Plato  
Martin Redmond  
Kenneth Robinson  
Leon Robinson  
William Ruple

Robert Skipper  
Robert Stewart  
Lee Thompson  
Joseph Trawick  
Wayne White  
Daniel Williams  
Taylor Wilkins  
Janette Perkins

Patricia Presley  
Faye Prestwood  
Mildred Price  
Sharon Richerson  
Miriam Russel  
Annie Marie Stewart  
Jenny Thames  
Jean White

Veda Williams  
Lavelle Williams  
Juanita Williamson  
Georgia Mae Wilson  
Barbara Ann Woods  
Ruby Yarbrough





(1) The contents of the Pep Rally Bonfire. (2) "The Three Stooges." (3) Just before the big event. (4) These dignified teachers. (5) W-A-N-D-A-. (6) Sea Ridge Bus. (7) She gets us in the classroom, but we got her now. (8) "Prunes and Peaches." (9) "Anything but that." (10) Don't let her get away. (11) Library workers.

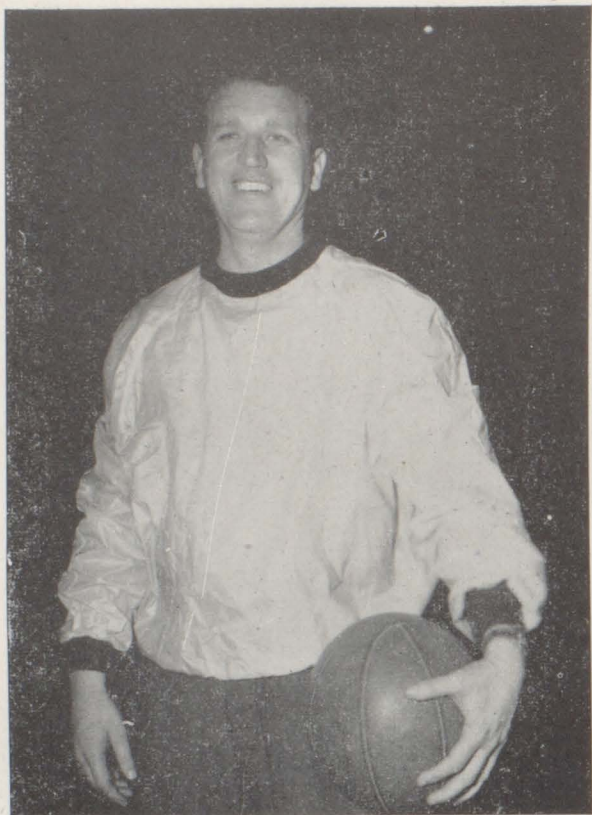




Cheerleaders: Hall, Davidson, White, Weaver, White, Bryars, and Stuckey

# ATHLETICS





Coach (Curley) Pugh

*Slave Driver*



*Managers*  
Hayes and Hall





Back row: C. V. Daniels, Darrington Helton, Tex Arnold, Edward Barlow, Carroll Powell, George Stuart, Billy Miller, Jack Davidson, Shelby Langston, Grey Cane, Keo Green, Tom Kelly, Randolph McGowan, Thomas Boone, Neal Crosby and Coach Pugh. Front Row: Pat Page, Clayton Dean, Fulton Duck, Clyde Johnson, Robert Wilson, Hiram Cabaniss, Angelo Stewart, Jerry Davidson, Langston Hedge, Tommy Page and Fuelner Stuart. Sitting: Allen Hayes and Joe Hall.





Top: Just Posing. Bottom: Hall turns "flip" over Weaver





### SECOND TEAM

Backs: Jack Davidson, Fuelner Stuart, Grey Cane, Thomas Boone, Randolph McGowan.  
Line: Carroll Powell, Bill Arnold, Edward Barlow, Neal Crosby, Fulton Duck, Billy Miller, Angelo Stewart, Tom Kelly, Darrington Helton.

In the first game of the 1946 season the Baldwin Countians downed a fighting team from Chatom by a score of 19-6.

### *Senior Players*

Back row: Jerry Davidson, Clyde Johnson, Hiriam Cabaniss.

Front row: Pat Page, Keo Green, George Stuart, Randolph McGowan.  
Not in panel Darrington, Helton and Fulton Duck.



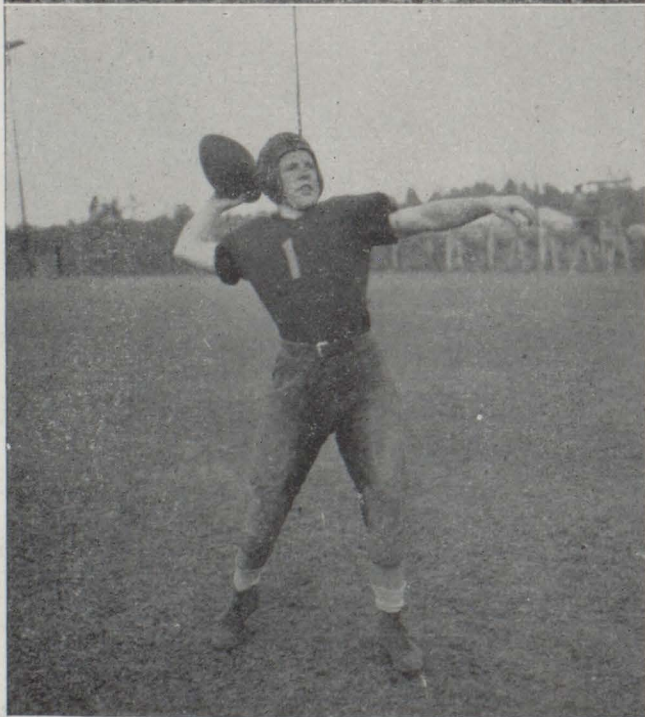




Davidson Dives for Ball

#### MILLER

On a wet and soggy Rotary Field in Brew-ton, B. C. H. S. begged down in a game with the highly favored team from Miller High. Although on the short end of a 19 to 0 score the Tigers kept fighting every inch of its way.



Cabaniss passes





*First String Line Up*

R. E., Clyde Johnson; R. T., Williard Cabaniss; R. G., Burl Hedge; Center, Jerry Davidson; L. G., Clayton Dean; L. T., Pat Page; L. E., Keo Green; Q. B., Hiram Cabaniss; L. H. B., George Stuart; R. H. B., Tommy Page; F. B., Robert Wilson.

### FLOMATON

Against Flomaton the Tigers really showed their power. Many reserves played to gain much valuable experience to ring up a 26 to 0 win for Baldwin.

### *Football Scores*

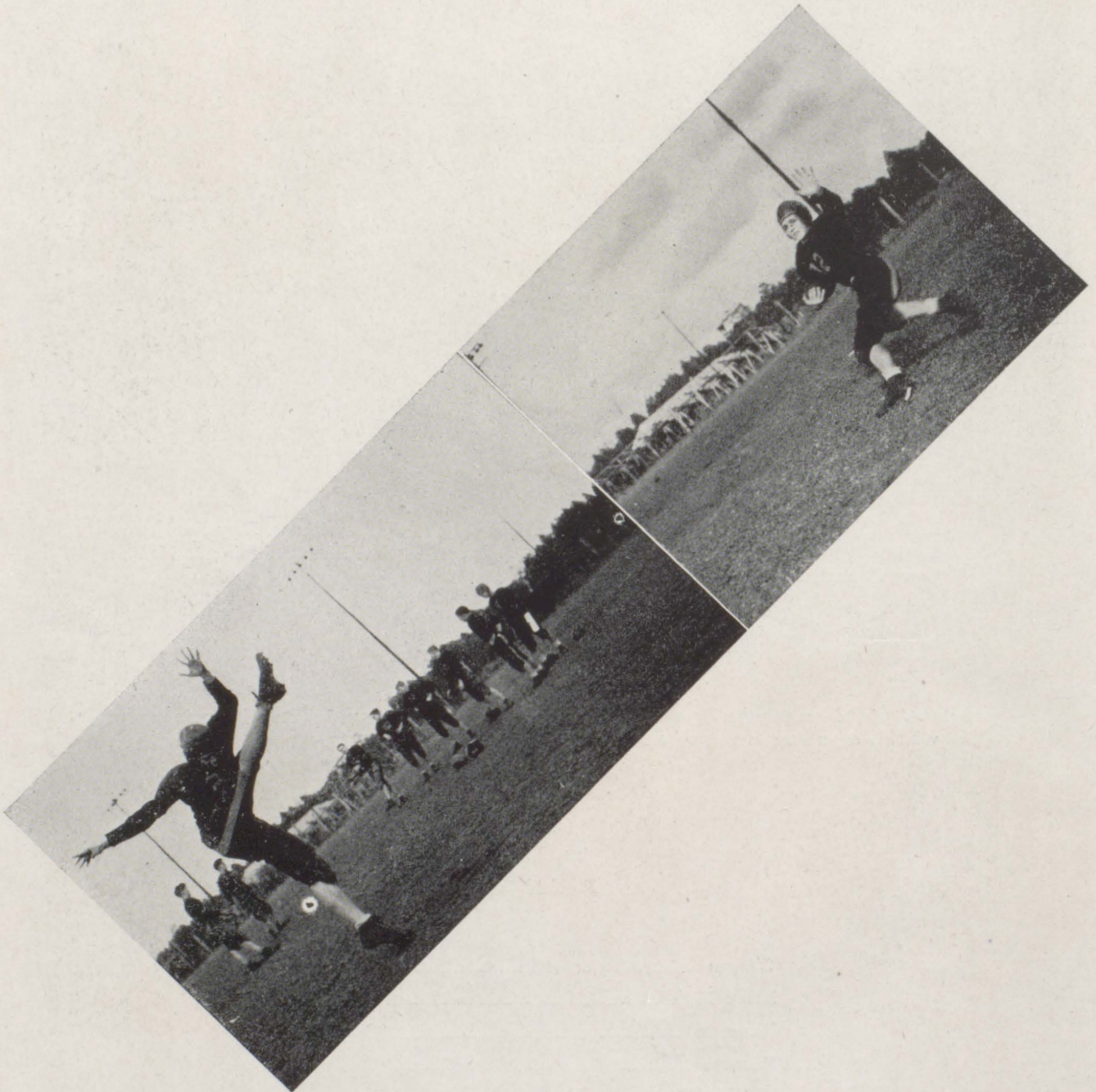
	We	They
Chatom .....	19	6
Miller High .....	0	19
Flomaton .....	26	0
Fairhope .....	7	13
McCullough .....	24	6
Robertsdale .....	0	13
Neal .....	33	19
Foley .....	13	18
Atmore .....	6	20



## FAIRHOPE

B. C. H. S. met Fairhope High in its annual homecoming tilt. Both teams played a good hard game. However, B. C. H. S. was not so successful in the score of the game as it had been in their big bonfire pep rally the night before. Score 13-7.

Wilson Takes Off on a Long Punt

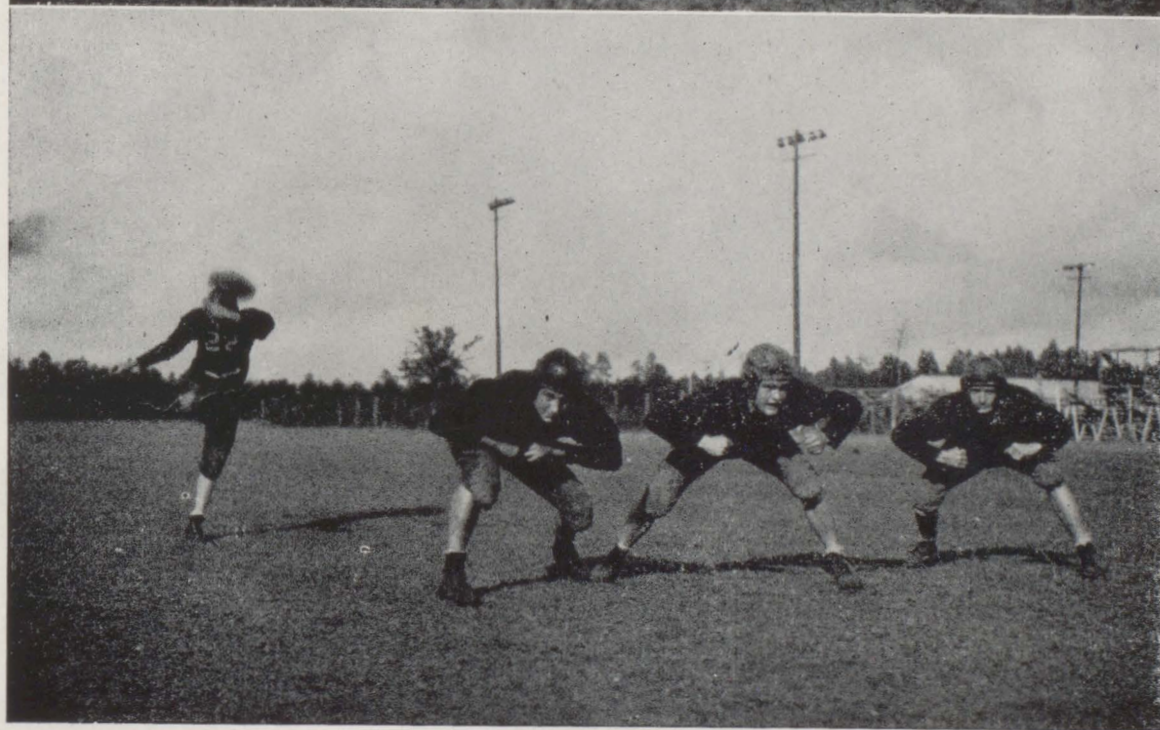


What's Up Stuart? Ballet Dancing?

## McCULLOUGH

In a game that was a little close at first the Tigers overpowered a surprisingly strong team from McCullough. Although tied up at the half, Baldwin "got on the ball" and ran the score up to 24 to 6.





*Practice Drills*

#### ROBERTSDALE

Due to many injuries in the line-up, the Tigers were able to meet Robertsdale with only about half strength and fell to the score of 13 to 0.



## NEAL

During the game against Neal High the scoring on both sides came fast but the Tigers came out on the heavy end of a 33 to 19 count.



Bean and Green Receive Passes

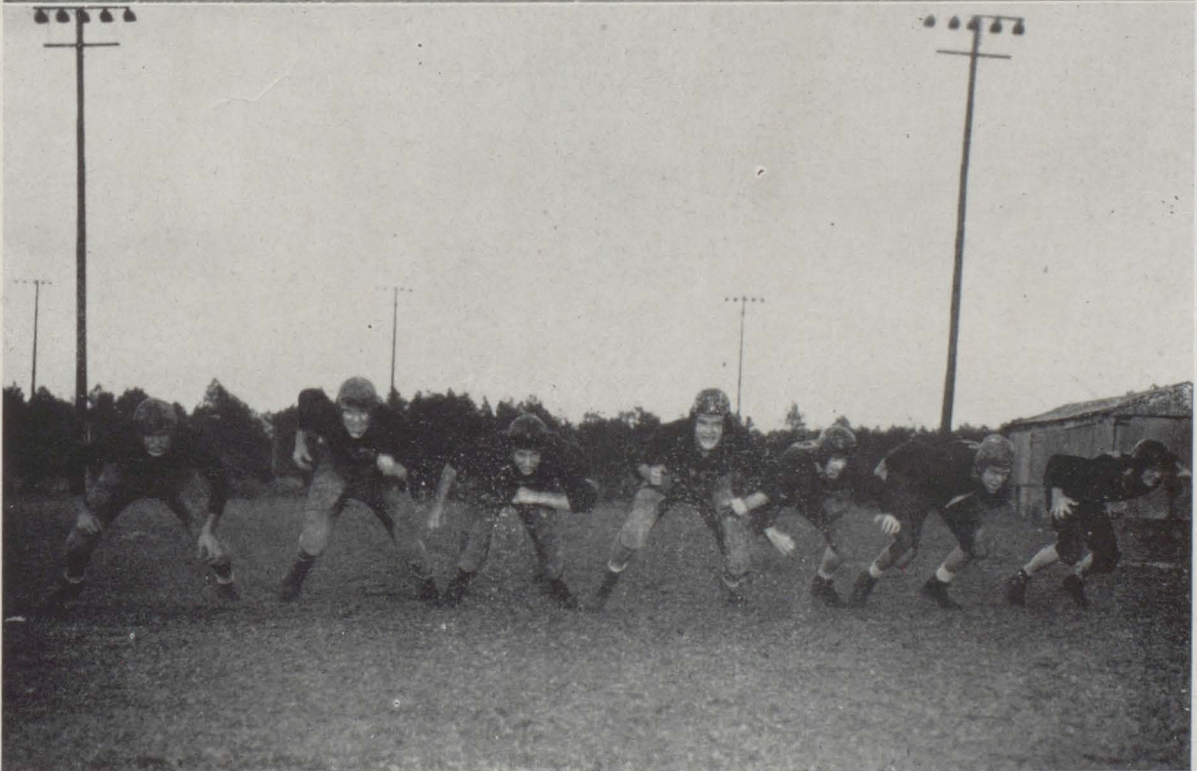
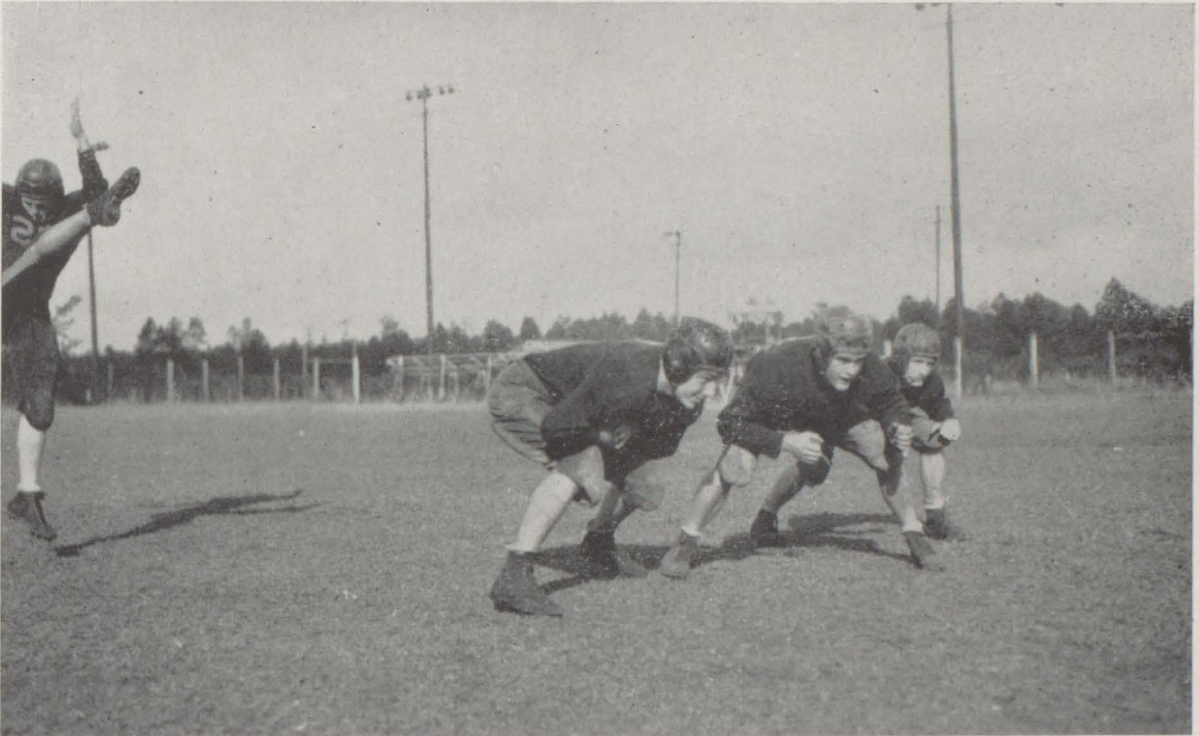
## FOLEY

In the annual Armistice Day the Tigers were handicapped at the start by injuries, but by a fancy show off of passing managed to give Foley a good fight for their 18 to 13 win.



Top: Wilson kicks as teammates block.

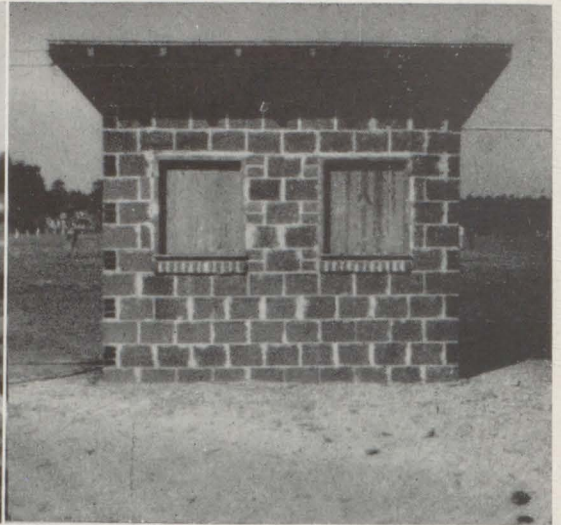
Bottom: Line charges



#### ATMORE

In the final game of the 1946 season the Baldwin Tigers met a strong team on the Blue Devil's home field. Although hampered by wet weather and a muddy field, the many seniors who played their last for Baldwin played their best and kept the losing score down to 20 to 6.





Scenes of the Cheering Section at the Foley Game

Just snap-shots





Top A campus scene the day before the Fairhope game. Bottom: Now all together. Middle: a—That lucky woman. b—Our spectators at Foley. c—What lovely legs. Bottom: a—These wonderful dances. b—Some of the games even had sponsors. c—Delapidated now, but improvements are seen in the future.





### BASKETBALL SQUAD

Back row: Cabaniss, Trawick, Mothershed, Davidson, Johnson, Wilson, Page, Bryant, Coach Pugh. Front row: Palmer, Davis, White, Kelly, Waters, Wilson, Hall, Duck.

### 1946-47 BASKETBALL SCORE BOARD

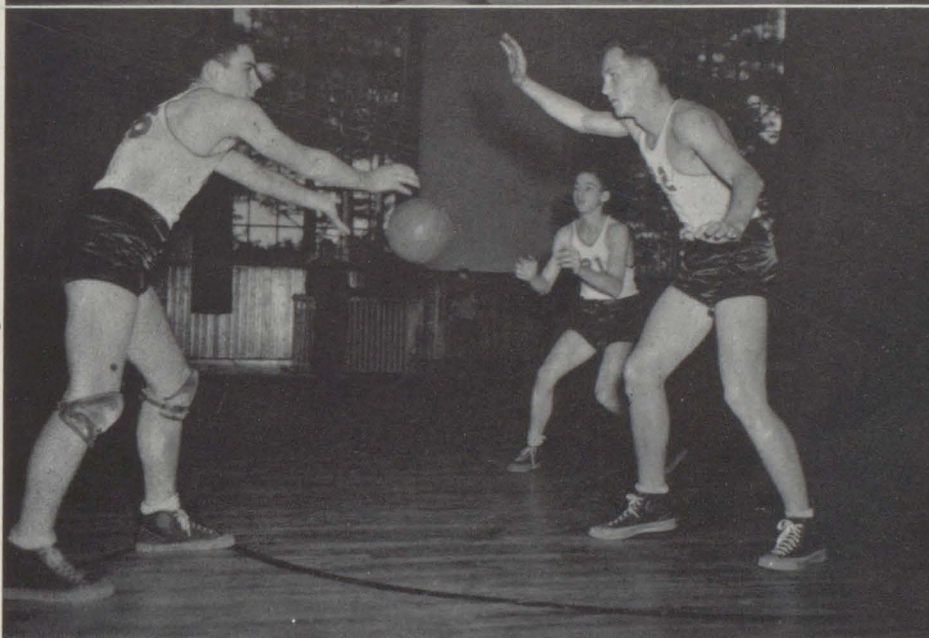
	We	They
Fairhope Organic .....	26	11
Uriah .....	15	14
Monroeville .....	15	33
Fairhope Organic .....	16	25
Miller High .....	38	32
Foley .....	36	26
Robertsdale .....	28	29
Fairhope High .....	40	33
Neal High .....	42	21
Uriah .....	16	14
McCullough .....	29	30
Foley .....	32	39
Fairhope High .....	46	31
Robertsdlae .....	32	30
Neal High .....	33	28
McCullough .....	16	15
Miller .....	37	45
<i>County Tournament</i>		
Foley .....	29	28
Fairhope High .....	42	33
Robertsdale .....	36	35
<i>District Tournament</i>		
Coffeeville .....	63	14
McGill .....	25	51



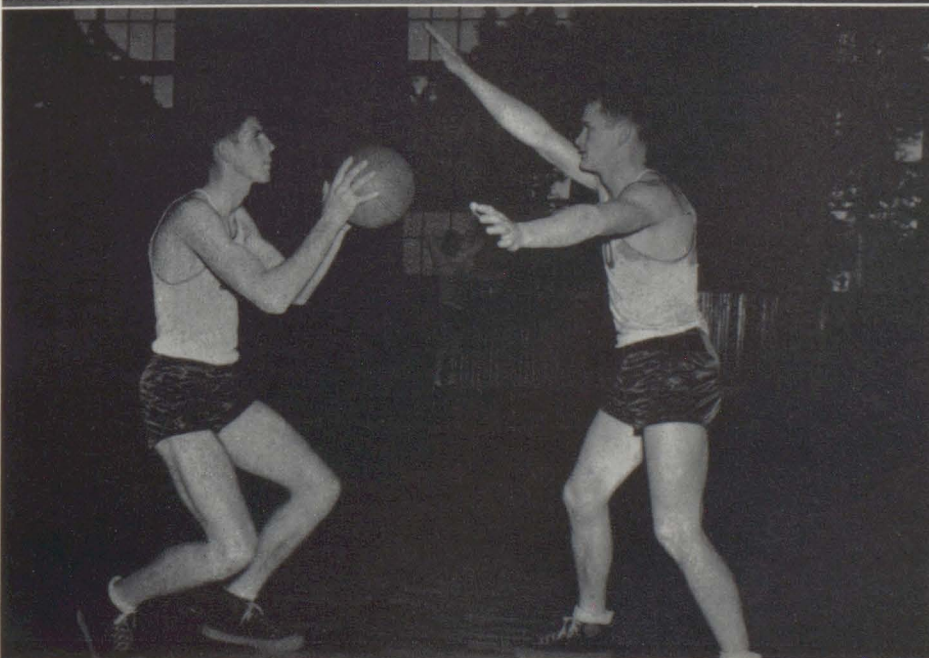
Waters guards as Mother-  
shed dribbles



Page passes to Kelly with  
Wilson trying to recover



Davidson guards, John-  
son shooting







Shucks! I missed



This is the way to practice



A scramble after the ball





Beanpole Johnson Shows How it is Done

On next page: Pictures of  
Girls' Physical Education Classes







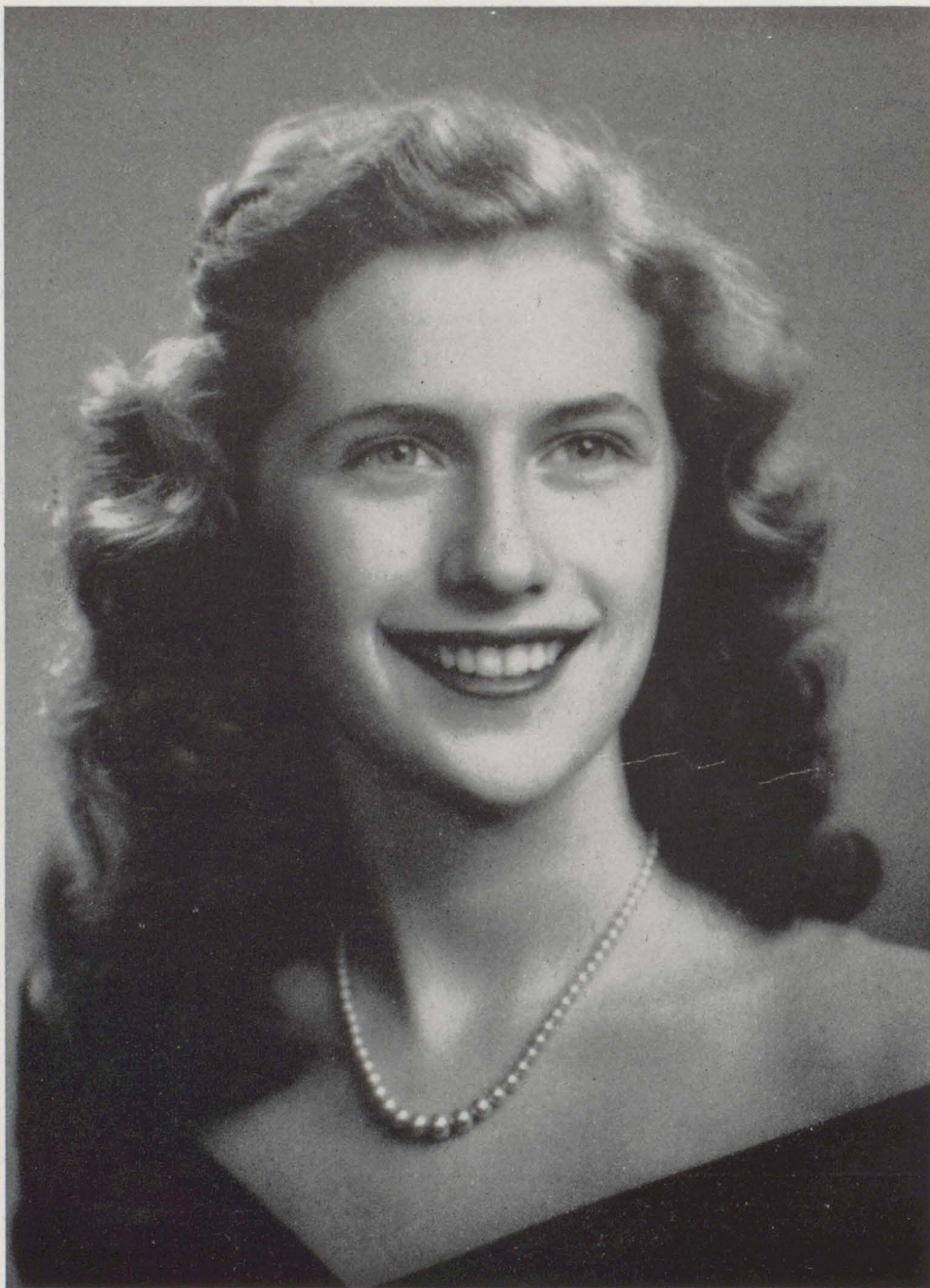


"Big Jim" Inaugural Float—Carolyn McMillan, Queen

# FEATURES



# MAY QUEEN



Frances Mancini



# MAY COURT

Erwin Davidson

Carrie Jean Bryars



Carolyn McMillan

Mary Alice White



# Miss B. C. H. S.



Jocelyn Tunstall



# Most Beautiful Girl

Mary Alice White



# Most Handsome Boy

Robert Wilson



# Cutest Boy

George Stuart



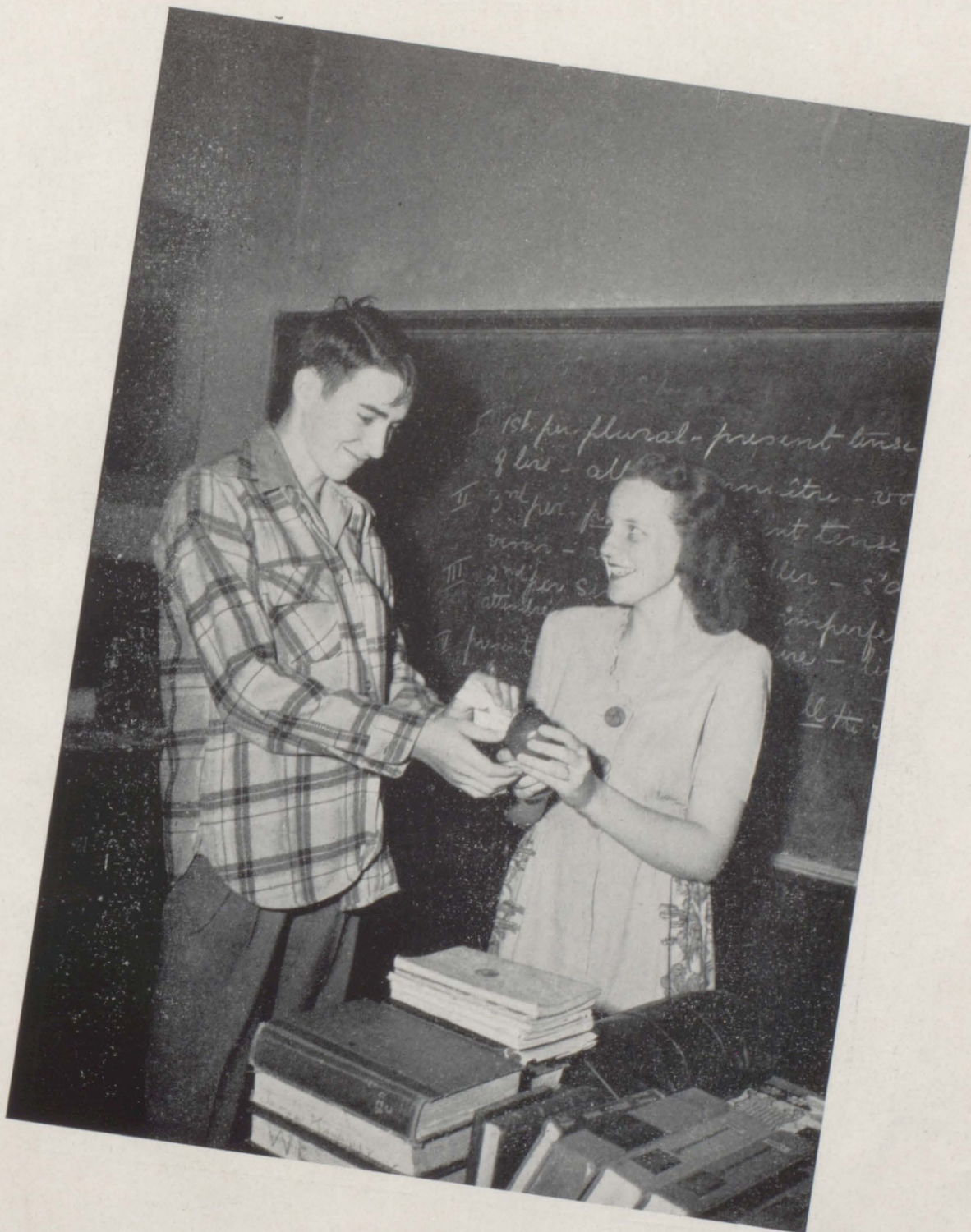
# Cutest Girl

"Babs" Bryars



# Teacher's Pet Boy

Glenn Hooper



# Teacher's Pet Girl

Carolyn McMillan



# Most Honest Girl

Frances Manzi



# Most Honest Boy

Fred Mason Bush



# Most Studious Boy

Glen Hooper



# Most Studious Girl

Jocelyn Tunstall



# Most Popular Girl

Carrie Jean Bryars



# Most Popular Boy

Robert Wilson



# Most Athletic Boy

Hiriam Cabaniss



# Most Athletic Girl

Doll Waters



# Best All-Round Boy

Jerry Davidson



# Best All-Round Girl

Frances Mancini



# Most Mischievous Girl

Bobby Hinterliter



# Most Mischievous Boy

Joe Buck



# Wittiest! Girl

Grace Weekley



# Wittiest Boy

Pat Page



**ADVERTISEMENTS**



Compliments of

**W. R. Stuart**

Good Luck Sentors

*Geo. (Bull Moose) Humphries*

Compliments of

*MOORE PRINTING CO.*

Compliments of

*SERVICE DRY CLEANERS*

Compliments of

**Briston's Prescription Drug Store**

*"Service for the Sick"*

Congratulations Seniors

**Noonan Advertising Service**



Compliments of

## Page's Service Station

Compliments of  
*C R I M ' S*  
*SERVICE STATION*  
and  
FISH SUPPLIES

*T H O S S*  
*SPORTING GOODS CO.*

Mobile's Largest and Oldest  
Sporting Goods Company  
In Business Over 60 Years

76 Dauphin St. — Dial 2-7816

HERE TODAY

and

HERE TOMORROW

## Beasley's



Compliments of

**Joyner's**

*Ice Cream Parlor*

---

Compliments of

**W. N. Stuckey**

Manufacturer of Lumber

---

Compliments of

**Bay Minette Bargin House**



MOBILE'S  
FINEST STORE FOR  
MEN

*METZGER BROS.*

108 DAUPHIN

*FRANK CHAMBERS  
ENGRAVING CO.*

2106 FIFTH AVE., NORTH

BIRMINGHAM, ALA.

Compliments of

*SCHEUERMANN SEED CO.*

Mobile, Alabama

*AL JOSEPH'S*

for

FINE MEN'S and WOMEN'S

SHOES

10 DAUPHIN ST.

Mobile, Alabama

Congratulations to the Graduates and

Best Wishes to All Posterity at Baldwin County High School

from

"ALABAMA'S BEST COUNTY'S BEST NEWSPAPER"

## **The Baldwin Times**

*Printers and Publishers Since 1890*

- - - PRINTING AT ITS BEST

- - - OFFICE SUPPLIES

BAY MINETTE, ALABAMA



# J. E. Still Motor Co.

*Baldwin Tractor and Implement Company*

Congratulations

TO THE CLASS OF 1946-47



*Compliments of*

**Wilson Chevrolet  
Company**



*Compliments*

*of*

**Newport Industries  
Inc.**



W. G. HOBBS

C. L. BRAWNER

## Hobbs Service Station

Gas and Oils, Groceries, Fruits, Vegetables

DIAL 3821

BAY MINETTE, ALABAMA

Compliments of

*MANCI'S NURSERY*

*HOOPER BROS.*

Standard Oil Products

Goodyear Tires

Compliments of

## Stuart's Cleaners

WE CALL FOR AND DELIVER

Compliments of

**Builder's Hardware & Supply Co.**



Compliments of

## Bay Minette Equipement Co.

FARMALL TRACTORS - McCORMICK - DEERING MACHINES

INTERNATIONAL TRUCKS

Sales - Service

Telephone 2321

Compliments of

*J. W. MOORE*

Realtors and Insurance

158 St. Francis St.—Mobile, Ala.

Compliments of

*CROW-WHITE*

Congratulations "GRADS"

PROTECT YOUR GAINS

WITH ADEQUATE INSURANCE

## J. A. Ertzinger & Sons

AGENTS



*If the label is...*



*It's RIGHT*

*For Over 73 Years Mobile's Best Store*

---

Compliments of

**Lambert's Drug Store**

Bay Minette, Alabama



LINE CUTS – HALFSTONES – COLOR PLATES

FOR SCHOOL and COLLEGE ANNUALS

## **Gulf States Engraving Co.**

MOBILE, ALABAMA

---

Compliments of

**Corley's Grocery**

---

Compliments of

**McDavid Furniture Store**

---

Compliments of

**Teate's Dry Goods Store**



Compliments of

## Travelers Service Station

*Standard Oil Products*

Compliments of

*TAYLOR WILKINS*

Compliments of

*GEORGE S. STOUGH*

Compliments of

*J. S. LOWERY*

Congratulations

## People's Market

T. J. DAVIDSON Prop.

## Barron Drug Store

WE ARE CAREFUL DRUGGISTS

DIAL 2821

BAY MINETTE, ALABAMA

*We Fill Prescriptions Written By Any Doctor*



COMPLIMENTS

-- of --

# Hadley's

*"The House That Service Built"*

***Dodge***



***Plymouth***

Bay Minette, Alabama

Spanish Fort, Alabama



# Prine-Howard

*MOTOR COMPANY, INC.*

Chrysler - Plymouth

Telephone 4041

Bay Minette, Ala.

---

## Baldwin County Bank

*BALDWIN COUNTY BANK*

Bay Minette, Ala.

Member F.D.I.C.

### OFFICERS

S. F. HOLMES ..... *President*

J. B. BLACKBURN ..... *Vice President*

C. L. WHITE ..... *Cashier*

S. W. LANGSTON ..... *Assistant Cashier*

### DIRECTORS

Y. A. Cox

C. A. Thompson

J. B. Blackburn

S. F. Holmes



Compliments From

## Rex Grill

NEAL H. McDUFFIE, Proprietor

BAY MINETTE, ALABAMA

---

Best Wishes

## Bruce's Dept. Store

---

### *BRADLEY'S HARDWARE*

Hardware,  
Building Supplies, Paints,  
Guns and Fishing Tackle

Bay Minette, Ala.—Dial 2871

J. H. Green      L. J. Ballard

### *HOME TIRE & RADIO SERVICE*

Tires—Radios—  
Electric Appliances  
Vulcanizing and Recapping

PHONE 4921  
Bay Minette, Alabama

---

Good Luck Seniors!

## Echo Cafe



