

STATE OF ALABAMA  
COUNTY OF BALDWIN

## ORDINANCE 1019 As Amended

### Sale of Unneeded Municipal Real Property

**BE IT ORDAINED** by the City Council of the City of Bay Minette Alabama, as follows:

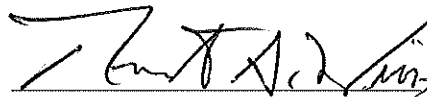
SECTION 1. It is hereby established and declared that the following described real property of the City of Bay Minette, Alabama is no longer needed for public or municipal purposes, to wit:

Site	Parcel	PPIN	Location*
1	23-05-16-1-001-044.000	063220	424 Hoyle Avenue
2	23-05-16-1-001-052.000	063224	421 Jacoby Court

\*Locations are further identified on the attached maps.

SECTION 2. That the mayor and the city clerk be, and they hereby are, authorized and directed to execute and attest, respectively, for and on behalf of the City of Bay Minette, Alabama, a deed in form as approved by the Mayor, a copy of which will be on file in the office of the city clerk, whereby the City of Bay Minette, Alabama, does convey the premises described in Section 1, hereof to the respective highest bidder via the online government surplus auction GovDeals.

Done this the 17<sup>th</sup> Day of January 2023



Robert A. Wills, Mayor  
City of Bay Minette, Alabama

ATTEST:



Rita Diedrich, City Clerk

STATE OF ALABAMA  
COUNTY OF BALDWIN  
CITY OF BAY MINETTE

Prepared by:  
Rita Diedrich, City Clerk

I, the undersigned qualified and acting Clerk of the City of Bay Minette, Alabama, do hereby certify that the above and foregoing is a true copy of an Ordinance lawfully passed and adopted by the Bay Minette City Council, at a regular meeting of such council, held on the 17<sup>th</sup> day of January 2023 and that said Ordinance is on file in the office of the Bay Minette City Clerk.

IN WITNESS WHEREOF, I have hereunto set my hand and affixed the official seal of the City of Bay Minette, on this the 17<sup>th</sup> day of January 2023.

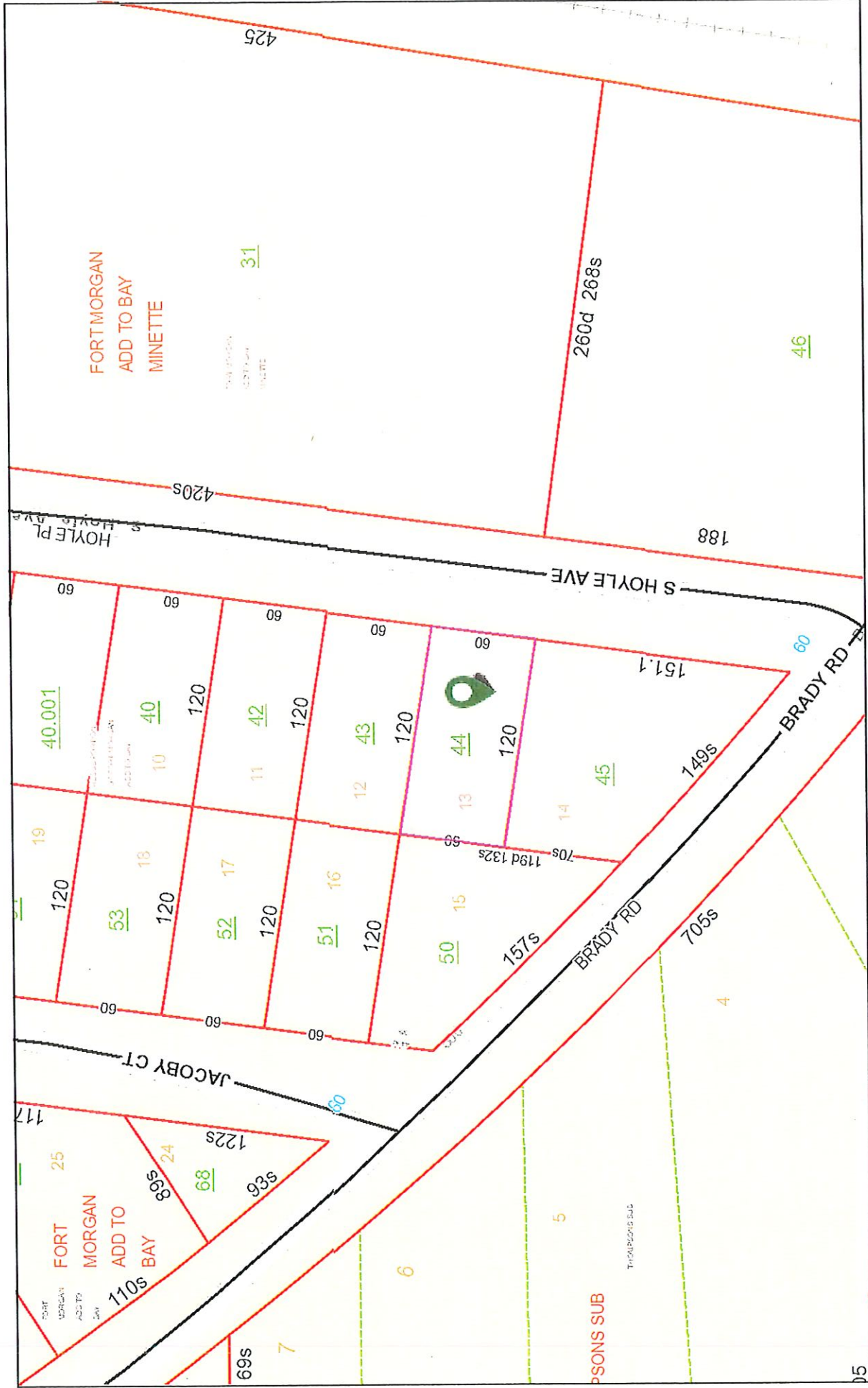
---

Rita Diedtrich, City Clerk

Prepared by:  
Rita Diedtrich, City Clerk

PPIN 063220

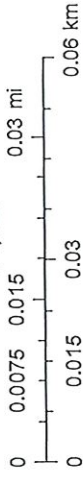
Address 424 Hoyle Avenue, Bay Minette, Alabama



December 29, 2022

- Parcels
- Override 1
- Misc
- Lot Lines
- Conflicts
- Coastal Control Line
- County Boundary

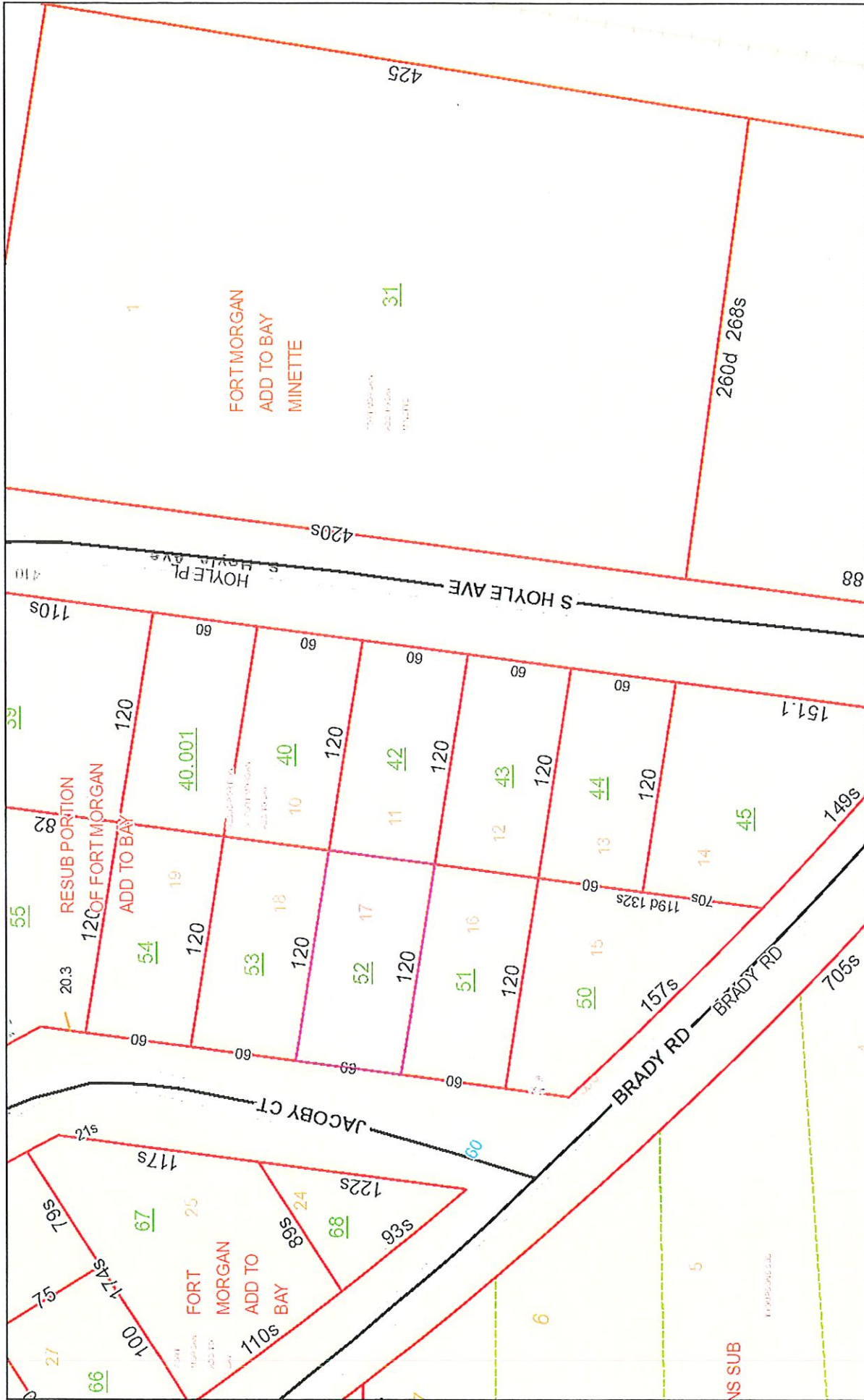
1:1,128



Sources: Esri, HERE, Garmin, USGS, Intermap, INCREMENT P, NRCan, Esri Japan, METI, Esri China (Hong Kong), Esri Korea, Esri (Thailand),

Copyright 2019

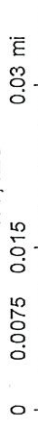
PPIN 063224 Address 421 Jacoby Court, Bay Minette, Alabama



December 29, 2022

- Parcels
- Centerlines
- Lot Lines
- Conflicts
- Coastal Control Line
- County Boundary

1:1,128



Sources: Esri, HERE, Garmin, USGS, Intermap, INCREMENT P, NRCan, Esri Japan, METI, Esri China (Hong Kong), Esri Korea, Esri (Thailand).