

ORDINANCE NUMBER 1054  
City of Bay Minette, Alabama

**Section 1: Recitals.**

WHEREAS, the City of Bay Minette, Alabama ("City") is a municipal corporation existing under the laws of the State of Alabama;

WHEREAS, the City is a Class 7 municipality as provided for in *Alabama Code* §§ 11-40-12 and 11-40-13;

WHEREAS, pursuant to *Alabama Code* § 11-43-63, the legislative functions of the City are exercised by a council composed of a mayor and five (5) members;

WHEREAS, the council members are elected from five (5) single member voting districts;

WHEREAS, under the provisions of *Alabama Code* § 11-44A-6, municipal corporations are required to reapportion the council districts based upon the federal census population;

WHEREAS, based upon the 2020 Federal Decennial Census the City must now apportion such districts according to the 2020 Federal Decennial Census;

WHEREAS, the present system of a five member council has proven effective and has operated to serve the best interests of the City of Bay Minette, Alabama;

WHEREAS, the City desires to preserve the existing five member districting system in such a way that promotes the best interests of the City of Bay Minette while complying with the requirements of law;

WHEREAS, the City has considered said apportionment plan and the boundaries outlined therein taking into account the compactness and contiguity of each district, natural geographic boundaries, uniting communities of interest in single districts, and maintaining the integrity of as many of the presently existing districts as possible and preserving incumbents, and has determined that the districts comply with the principle of equal presentation under the Act, comply with the equal protection requirements of the U.S. Constitution, and comply with the provisions of the Voting Rights Act of 1965;

WHEREAS, the City has widely publicized the redistricting process and has sought public input and participation;

WHEREAS, the City has conducted several open meetings; has held two community meetings; has conducted a public hearing to receive input and public comments; and has given notice by publication and posting that it would consider the adoption of said districts at this meeting; and

WHEREAS, the City finds that the five (5) single member election districts shown by the map attached hereto are apportioned according to the last Federal Decennial Census for Bay Minette, Alabama utilizing the principle of equal representation.

**Section 2: Enactment.** This shall be an Ordinance of the City of Bay Minette, Alabama amending Ordinance Number 827, adopted by the Bay Minette City Council on January 21, 1992, as modified by Resolution 1111-01 on December 5, 2011.

**Section 3: Purpose.** The purpose of this Ordinance is to make the minimum adjustments to the adopted and approved single-member Council district boundaries that are necessary to maintain roughly equal populations within each district based on the 2020 US Census of Population.

**Section 4: Authority.** The Ordinance set forth herein is adopted pursuant to authority granted by Alabama Code § 11-44A-6.

**Section 5: Establishment of Districts.** The City of Bay Minette, Alabama is hereby divided into Single-Member Council Districts as listed and described in the district descriptions attached hereto and as illustrated on the Official Single-Member Council District Map, both of which are hereby adopted and made a part of this Ordinance.

**Section 6: Eligible Candidates and Electors.** Candidates for election to a place on the City Council shall reside within the boundaries of the district for which they seek election, and shall continue to reside within the district they represent so long as they remain a member of the Council. Furthermore, such candidates for election to a place on the City Council shall have resided within the district from which they seek election for a period ninety (90) days immediately preceding the date of election. Only electors residing within a district shall be entitled to vote for candidates seeking election for said district.

**Section 7: Amendment.** The City of Bay Minette shall assess the population in the single-member Council districts following each decennial U.S. Census and shall make the minimum adjustments to the district boundaries that are necessary to maintain roughly equal populations within each district that are within the limits of deviation allowed by law as such may presently exist or be hereafter amended.

**Section 8: Adoption.** This Ordinance was approved and adopted by the City Council of Bay Minette, Alabama on the 6<sup>th</sup> day of January, 2025.

ADOPTED this 6<sup>th</sup> day of January, 2025.



Robert A. Wills, Mayor  
City of Bay Minette, Alabama

Attest:

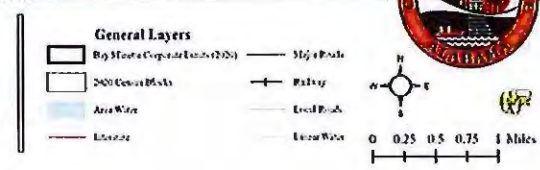
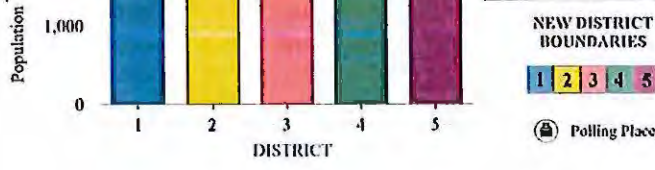
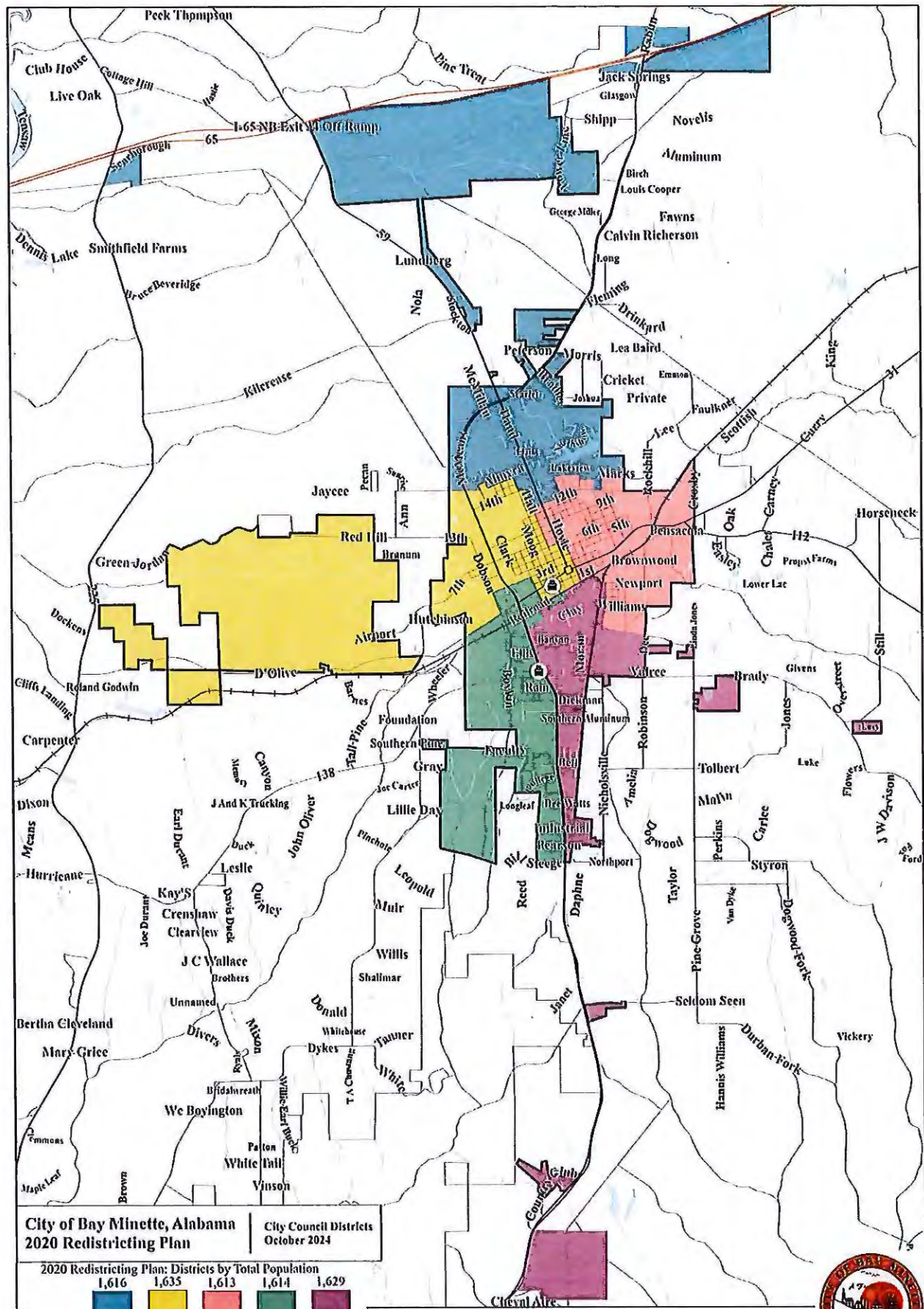


Rita Diedrich, City Clerk

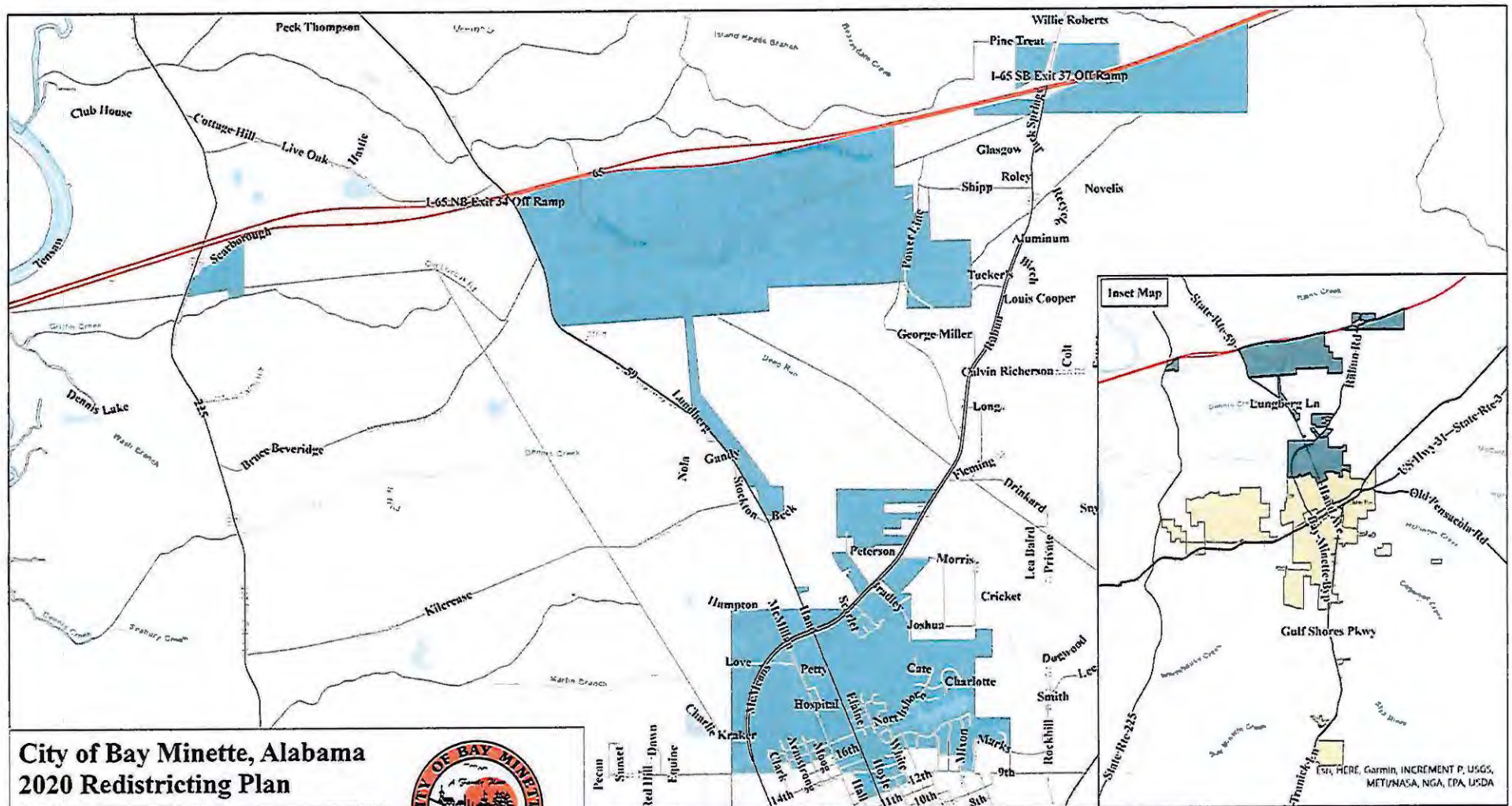


Council District	2020 Census Tract	2020 Census Blocks
1	102	1053   1064   1069   1070   1074   1075   1080   1082   1083   1084   1088   1094
1	103	3061   3063   3064   3066
1	105	2000   2001   2002   2003   2004   2005   2006   2007   2008   2009   2010   2011   2012   2014   2015   2016   2017   2019   2024   2027   3005   3013   3014   3015   3016   3017   3018   3019   3020   3021   3023   3024   3025   3026   3027   3028   3029   3030   3031   3032   3033   3037
2	103	3057   3065   3068   3069   3072   3078   3079   3080   3081   3083   3084   3089
2	105	1002   1003   1004   1005   1006   1007   1008   1009   1010   1011   1012   1013   1014   1015   1019   1020   1021   1022   1023   1024   1025   1026   1027   1028   1029   1030   1031   1032   1033   1034   1035   1036   1037   1038   1039   1040   1041   1042   1043   1044   1045   1046   1047   1048   1049   1050   1051   1052   1053   1054   1058   1059   1060   1072   2013   2018   2020   2021   2022   2023   2025   2026   2028   2029   2030   2031   2034   2035   2036   2037   2038   2042   2043   2044   2045   2046   2047
3	102	1103   1104   2025
3	104	3003   3004   3005   3009   3010
3	105	1000   1001   2032   2033   2039   2040   2041   3009   3022   3034   3035   3036   3038   3039   3040   3041   3042   3043   3044   3045   3046   4001   4002   4003   4004   4005   4006   4007   4008   4009   4010   4011   4012   4013   4014   4015   4016   4017   4018   4019   4020   4021   4022   4023   4024   4026   4027   4028   4029   4030   4031   4032   4033   4035   4036   4037   4038   4039   4040   4041   4042   4043   4044   4045   4046   4047   4048   4049   4050   4051   4052   4053   4054   4055   4056   4057
3	106	2000
4	103	5000   5001   5002   5003   5004   5005   5006   5007   5008   5009   5011   5012   5014   5015   5021   5022   5023   5024   5025   5027
4	105	1016   1017   1018   1055   1061   1062   1063   1064   1065   1066   1067   1068   1069
4	106	1000   1001   1002   1003   1004   1005   1006   1007   1008   1009   1010   1017   1018   2016   2024   2025   3014   3015   3016   3035   3036
5	103	5042   5043
5	104	3008   3012   3023   3055
5	105	1056   1057   4025   4034

5	106	1011   1012   2001   2002   2003   2004   2005   2006   2007   2008   2009   2010   2011   2012   2013   2014   2015   2017   2018   2019   2020   2021   2022   2023   2026   2027   2028   2029   3000   3002   3004   3005   3006   3007   3008   3009   3012   3013   3017   3018   3019   3020   3021   3022   3024   3025   3026   3027   3028   3037   3038   3039   3040
---	-----	--







# City of Bay Minette, Alabama 2020 Redistricting Plan

District 1  
October 2024



0 0.5 1 1.5 2 2.5 3 Miles

NEW DISTRICT  
BOUNDARY

1

## General Layers

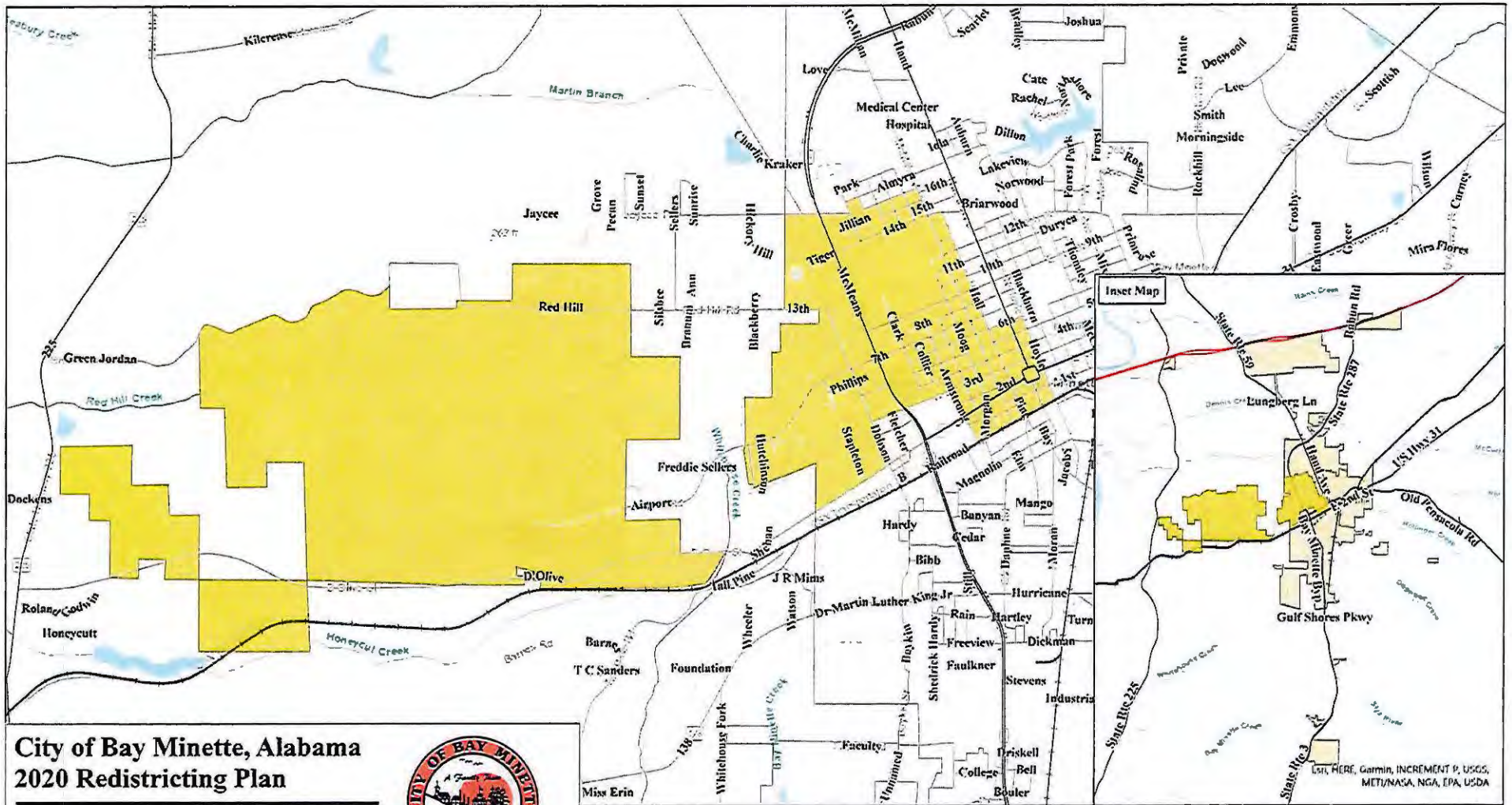
- 2020 Census Blocks
- Area Water
- Interstate
- Major Roads

- Railway
- Local Roads
- Linear Water



Esri, HERE, Garmin, INCREMENT P, USGS,  
METUNASA, NGA, EPA, USDA





# City of Bay Minette, Alabama 2020 Redistricting Plan



District 2  
October 2024



NEW DISTRICT  
BOUNDARY

2

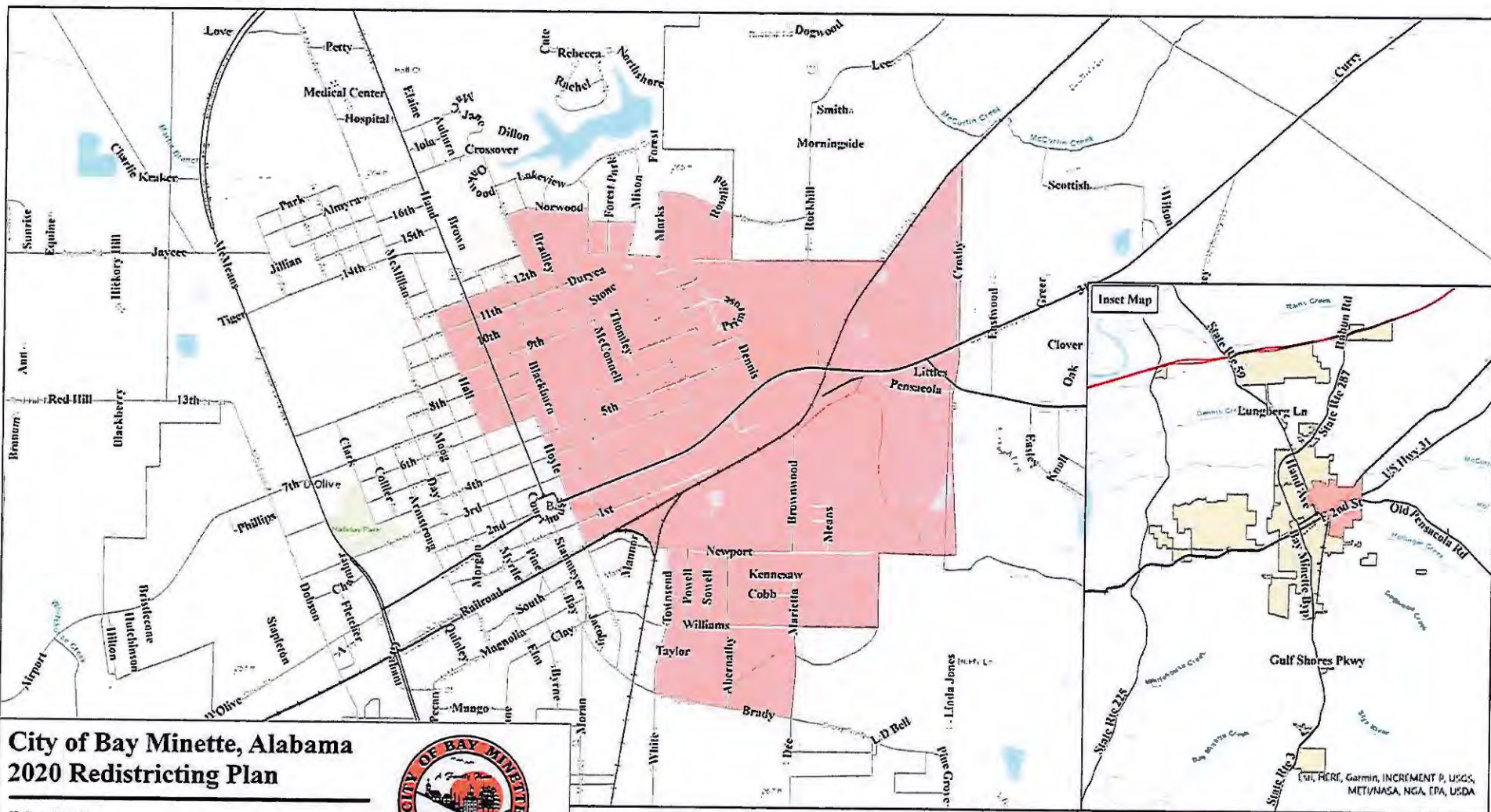
## General Layers

- 2020 Census Blocks
- Area Water
- Interstate
- Major Roads

- Railway
- Local Roads
- Linear Water

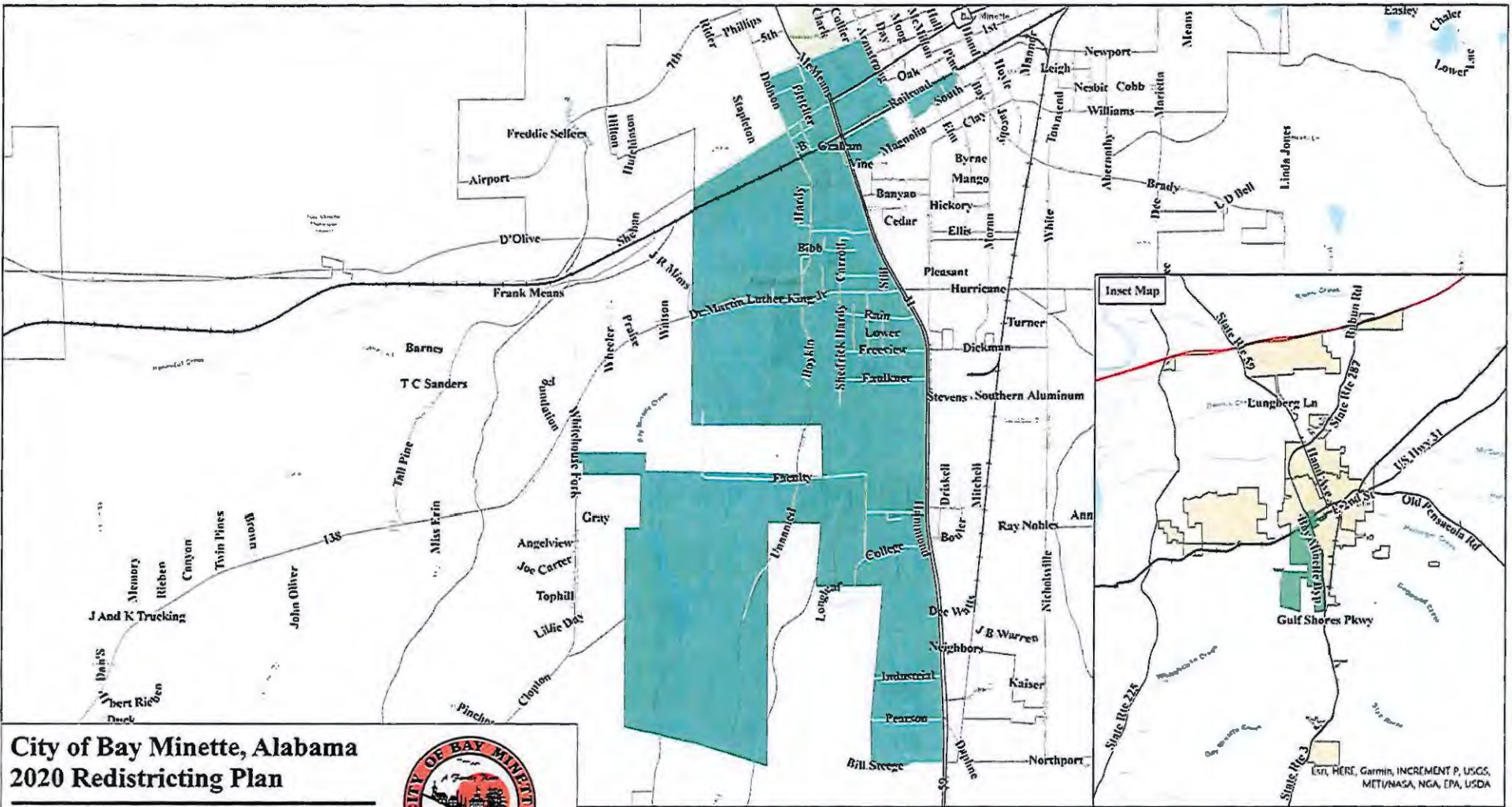






0 0.5 1 1.5 Miles





# City of Bay Minette, Alabama 2020 Redistricting Plan

District 4  
October 2024



0 0.5 1 1.5 2 Miles

NEW DISTRICT  
BOUNDARY

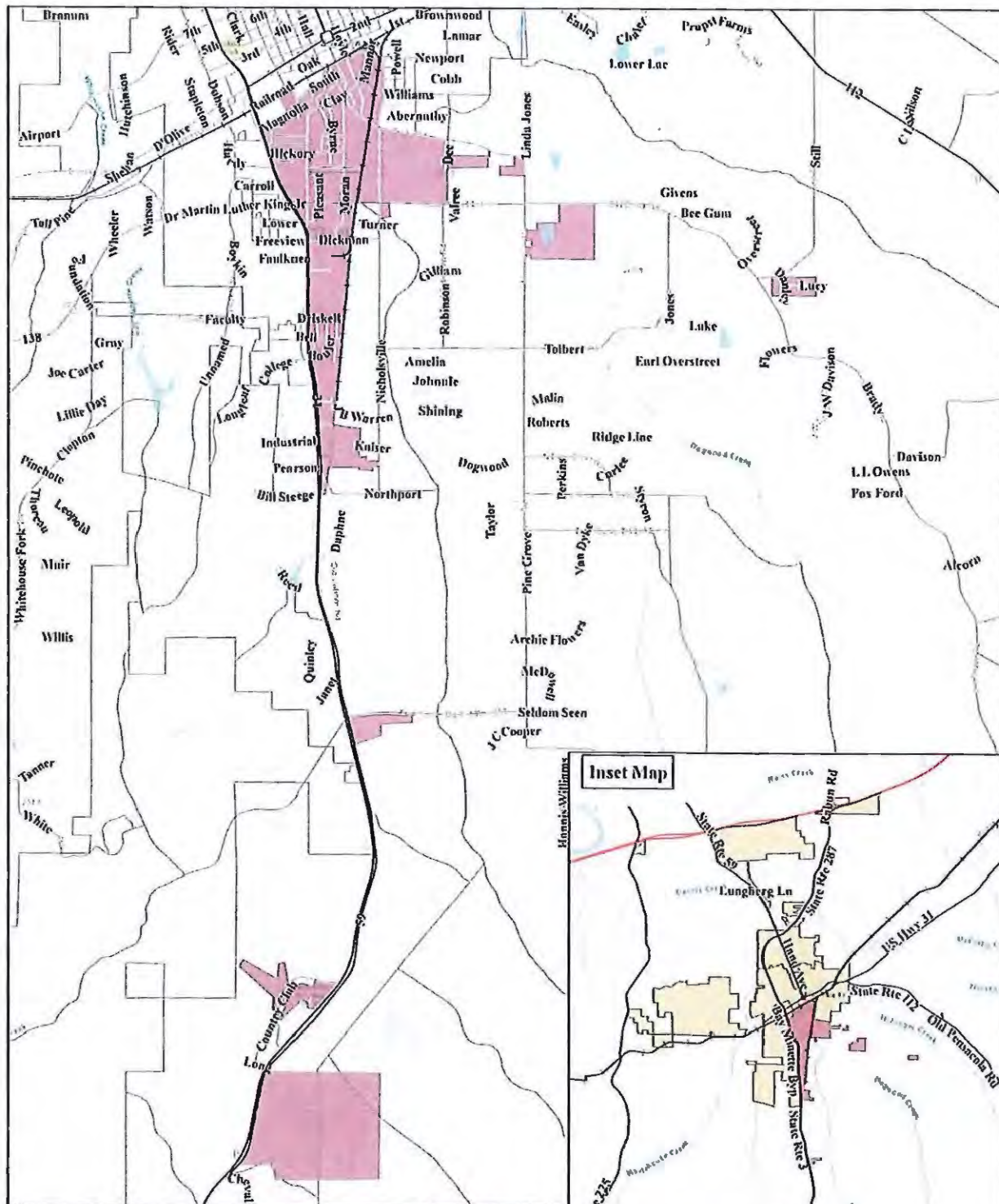
4

General Layers

- 2020 Census Blocks
- Area Water
- Interstate
- Major Roads

- Railway
- Local Roads
- Linear Water





**City of Bay Minette, Alabama**  
**2020 Redistricting Plan**

**District 5**  
**October 2024**



**NEW DISTRICT**  
**BOUNDARY**

5

**General Layers**

- 2020 Census Blocks
- Area Water
- Interstate
- Major Roads
- Railway
- Local Roads
- Linear Water

