

Exhibit B

**Z-24002, Honeycut Creek Cottages
PUD & Master Plan
Sample House Elevations**

Honeycut Creek Cottages

Bay Minette, Alabama

PLANNED UNIT DEVELOPMENT
SAMPLE HOUSE ELEVATIONS

APRIL 25, 2024

GOODWYN MILLS CAWOOD
2039 Main Street | Daphne, AL 36526



RC Chelsey

4 BED • 2.5 BATH
2 CAR GARAGE



LONG LIVE HAPPY HOMES™

Drawing is an artistic rendering only. Actual home, options and floorplans may vary from rendering and by community. Optional elevation drawings on reverse side.



RCH.com

844.4RCHomes



Version 11

ELEVATIONS



RC Chelsey Elevation A



RC Chelsey Elevation B



RC Chelsey Elevation C



RC Chelsey Elevation D



RC Chelsey Elevation E



RC Chelsey Elevation G



RC Holland

3 BED • 2.5 BATH
2 CAR GARAGE



LONG LIVE HAPPY HOMES™

Drawing is an artistic rendering only. Actual home, options and floorplans may vary from rendering and by community. Optional elevation drawings on reverse side.



RCH.com

844.4RCHomes



Version 14

ELEVATIONS



RC Holland Elevation A



RC Holland Elevation B



RC Holland Elevation C



RC Holland Elevation D



RC Holland Elevation G



RC Holland Elevation H



RC Holland Elevation I

ELEVATIONS



RC Holland Elevation A



RC Holland Elevation B



RC Holland Elevation C



RC Holland Elevation D



RC Holland Elevation G



RC Holland Elevation H



RC Holland Elevation I

Version: 14.01
CORE 3-CAR



RC Kingston

4 BED • 2.5 BATH
2 CAR GARAGE



LONG LIVE HAPPY HOMES*

Drawing is an artistic rendering only. Actual home, options and floorplans may vary from rendering and by community. Optional elevation drawings on reverse side.



RCH.com

844.4RCHomes



Version 08

ELEVATIONS



RC Kingston Elevation A



RC Kingston Elevation B



RC Kingston Elevation C



RC Kingston Elevation D



RC Kingston Elevation G



RC Mitchell

3 BED • 2 BATH
2 CAR GARAGE



LONG LIVE HAPPY HOMES™

Drawing is an artistic rendering only. Actual home, options and floorplans may vary from rendering and by community. Optional elevation drawings on reverse side.



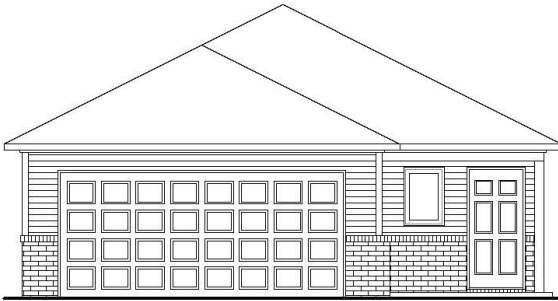
RCH.com

844.4RCHomes



Version 11

ELEVATIONS



RC Mitchell Elevation A



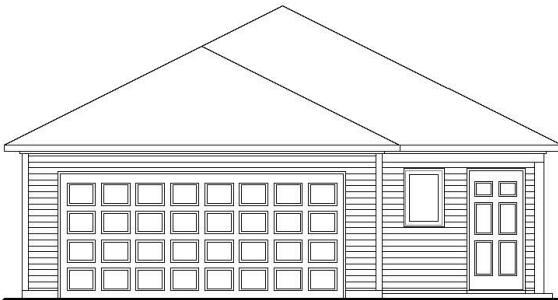
RC Mitchell Elevation B



RC Mitchell Elevation C



RC Mitchell Elevation D



RC Mitchell Elevation G

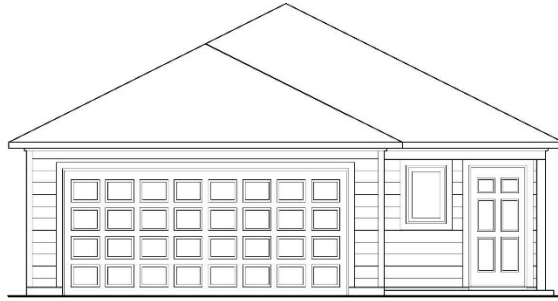


RC Mitchell Elevation H

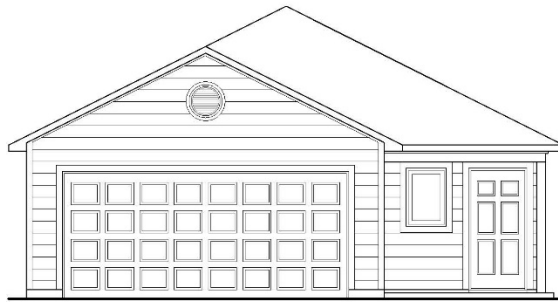


RC Mitchell Elevation I

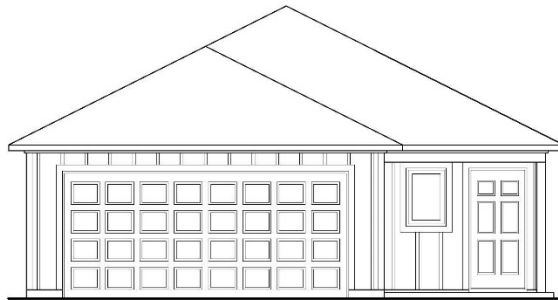
ELEVATIONS



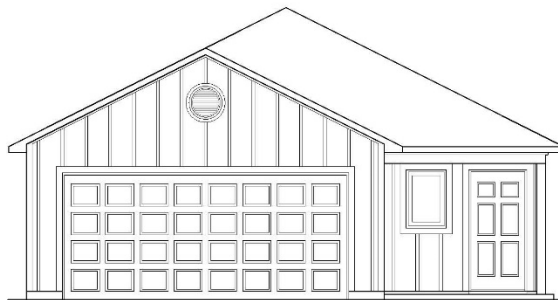
RC Mitchell Elevation G



RC Mitchell Elevation J



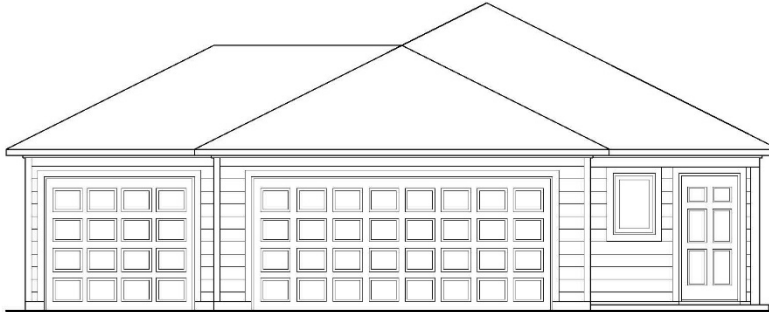
RC Mitchell Elevation K



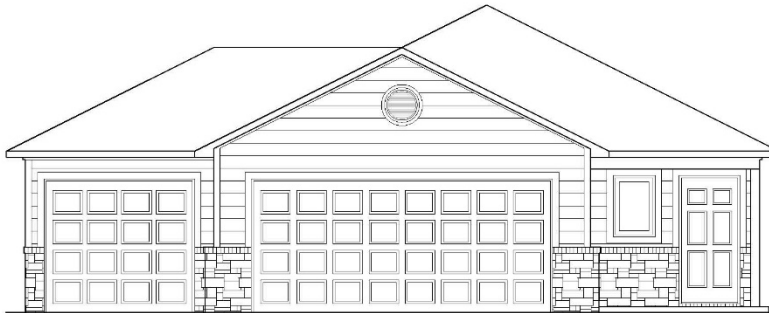
RC Mitchell Elevation L

Version: 11.01
GJKL

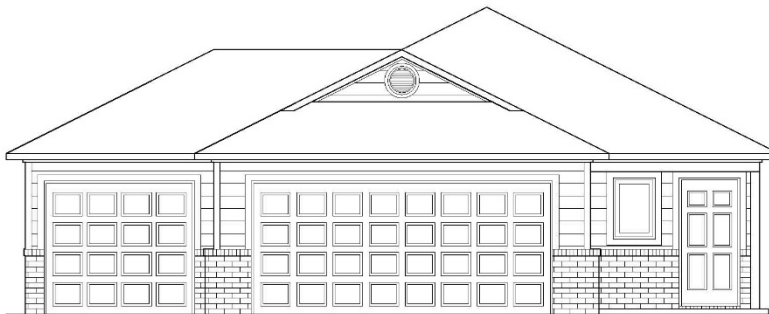
ELEVATIONS



RC Mitchell Elevation G



RC Mitchell Elevation H

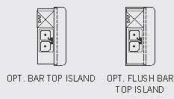


RC Mitchell Elevation I

Version: 11.01
KS 3-CAR



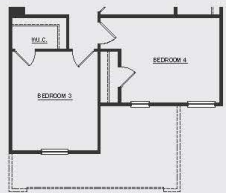
First Floor



OPT. BAR TOP ISLAND OPT. FLUSH BAR TOP ISLAND



Second Floor



OPT. BED ROOM 4



OPT. DOUBLE BOWL SINK

OPT. SOAK TUB & SHOWER

OPT. 60" SHOWER

OPT. SOAK TUB W/ SHOWER HEAD

ELEV. CDI BED ROOM 3

RC Newberry

3 BED • 2.5 BATH
2 CAR GARAGE



LONG LIVE HAPPY HOMES™

Drawing is an artistic rendering only. Actual home, options and floorplans may vary from rendering and by community. Optional elevation drawings on reverse side.



RCH.com

844.4RCHomes



Version 06

ELEVATIONS



RC Newberry Elevation A



RC Newberry Elevation B



RC Newberry Elevation C



RC Newberry Elevation D



RC Newberry Elevation G



RC Newberry Elevation H



RC Newberry Elevation I

ELEVATIONS



RC Newberry Elevation A



RC Newberry Elevation B



RC Newberry Elevation C



RC Newberry Elevation D



RC Newberry Elevation G



RC Newberry Elevation H



RC Newberry Elevation I

Version: 06.01
KS 3-CAR

Submitted to:

The City of Bay Minette
Planning & Development Services
Ms. Clair Dorough, City Planner
301 D'Olive Street
Bay Minette, AL 36507
251- 580-1650

Date: April 25, 2024

Prepared For:

Rausch Coleman Homes, LLC
4058 North College Avenue, Ste 100
Fayetteville, AR 72703
850-380-1539
Fred McLaughlin
Director of Land Acquisitions

Prepared By:

Goodwyn Mills Cawood
2039 Main Street
Daphne, AL 36526
251-626-2626
Melissa A. Hadley, PhD, RLA, AICP
Project Manager, Engineering